

THE PROGRESSIVE FARMER



EASTERN EDITION

A Farm and Home Weekly for

The Carolinas, Virginia, Georgia, and Florida.

FOUNDED 1886, AT RALEIGH, N. C.

Reg'd U. S. Pat. Office

AGRICULTURAL
PUBLICATIONS
DIVISION
U. S. DEPT. OF AGRICULTURE
WASHINGTON, D. C.

Vol. XXXV. No. 36.

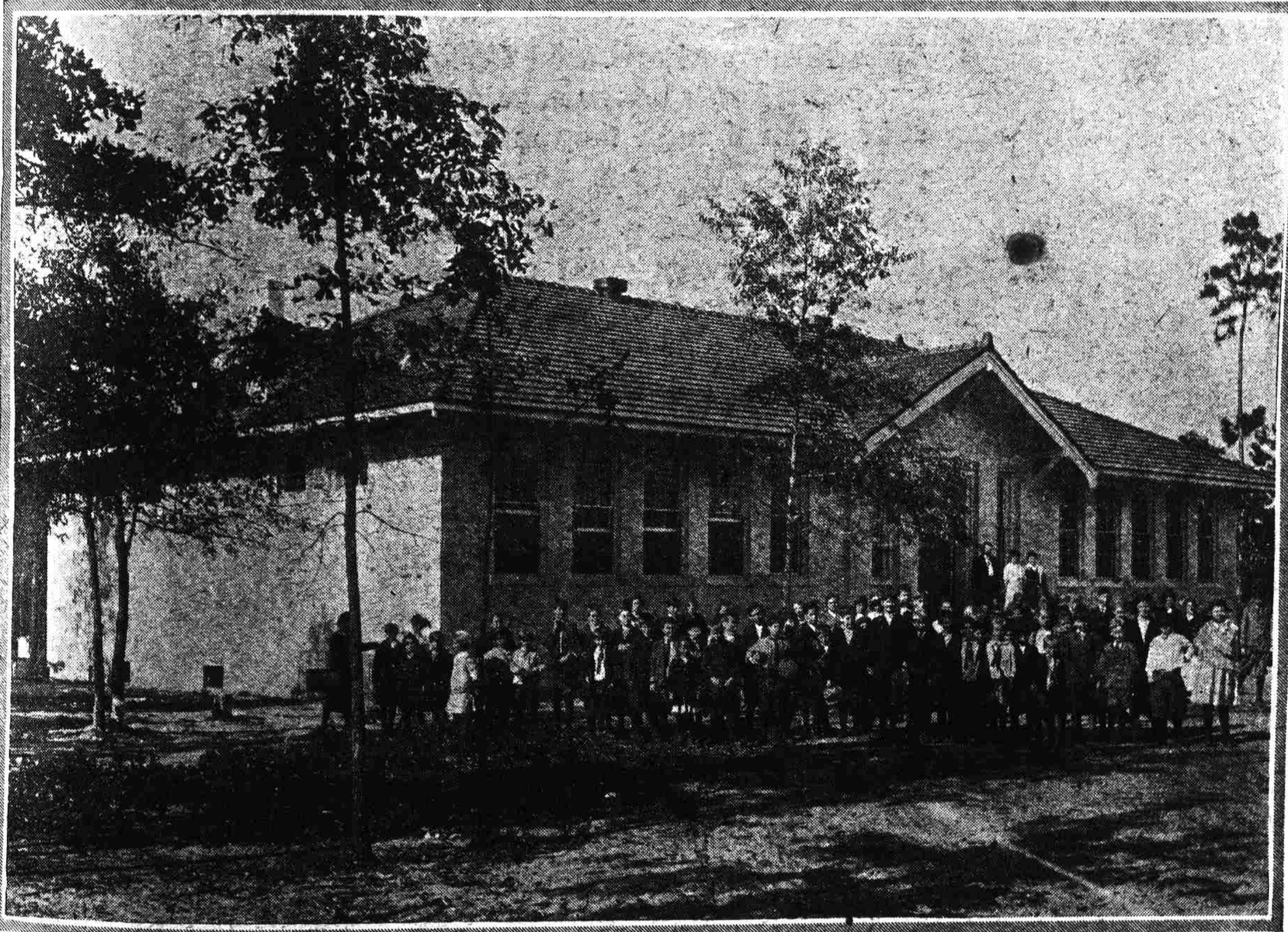
SATURDAY, SEPTEMBER 4, 1920

\$1 a Year Copy

SEND YOUR CHILDREN TO A GOOD SCHOOL

IT IS cultivation season again for the most important crop the South can grow—right thinking boys and girls. Is the machinery all ready? Have good workmen been employed? Is every parent ready to devote whatever time is necessary to the cultivation of the minds of the coming generation to

already been put in shape, get the community together right away and prepare for the comfort and welfare of your child and your neighbor's. Provide an abundant supply of pure water. Ventilate the building so that every child will get plenty of pure air to breathe. Arrange a heating system that will



SCHOOL DAYS AGAIN

The odor and the feel of the air of school starting days are here. With a country school like this one to attend, boys and girls will be glad to hunt up their pencils and tablets and with their new books, a grade higher than last year, to get back to work.

whom their work must be handed over to carry on? Send your children to a good school only. If it isn't good now, make it so.

Every child in reach of a consolidated school of at least four teachers is fortunate. If, however, such a school has not already been provided, it is almost too late to do more than get a movement under way to have such a school for another year. We must now utilize what we have in the way of schools and schoolhouses. The first fundamental is a good teacher, and if such has not been provided, don't quit. Pay what it takes to get a good one and keep trying until one is secured. This is one farm employee that we cannot do without.

Of about equal importance is that of the building, and if this has not

keep the building at a good, even temperature. Put in a supply of wood or coal sufficient to last all winter. Provide toilet accommodations that are sanitary and will insure the health of the children. See that plenty of light comes into the building, but that no glare and direct sunlight strikes into the eyes of the students. Windows and window shades are cheaper than doctor bills and eyeglasses. Screen the building against flies and mosquitoes; they carry sickness into the school. Get behind the teacher with full support and co-operation. Help the children with their studies and discuss with them the importance of getting an education; of obedience to the teacher's authority; and of absolute loyalty to their school and to their community. Grow not merely men and women but citizens.