

**This Week in the Poultry Yard**

**POULTRY raising is a business,**—and like any other business, there are right and wrong ways of managing it. The "happy-go-lucky" way—letting the poultry hang around the barns or stables, run in the garden to scratch up the seed and eat the young plants just coming up; running wild in the woodlot or in the fields at the wrong time, roosting in trees, hiding away their nests, means verminous, half fed scrubs and a minimum yield of eggs.

It is folly to imagine poultry can be left to rustle for their living. "Costing next to nothing to keep 'em", and ever be a source of either pleasure or profit, any more than it can be done with cattle, hogs or any other worth-while livestock. The farmer who figures that his poultry will thrive and pay when forced to "rustle" for their living on the wastes of the farm either has a scrub flock, too small to be of any use, or is totally ignorant of the first lessons of poultry breeding.

Poultry breeding on a business basis means purebred stock, comfortable, sanitary quarters, well balanced feeds—grains, mash, and green feeds—and pure fresh water at all times; each breeding pen or flock of layers isolated from others, and protected from invasion of strange fowls, dogs, cats, and vermin. Regular hours for feeding, for gathering eggs, for cleaning of houses or runs must be observed. In short, system and regularity are necessary all the way through.

This system has one important result. It allows close, constant study of every bird, its condition and habits. The producers are soon shown, and the loafers detected and eliminated, thus saving the expense of feeding drones. If trap nests are used, then the productivity of each individual is exactly known, helping to fix their value as breeders. The aim of every poultry breeder should be to develop a strain, not so much of high scoring, as of high producing fowls.

If this point is attained and the flock is really purebred, the exercise of good judgment in the mating up of the breeding pens, "balancing" strong and weak points, will generally result in reasonably high scoring as well as highly productive birds. In the long run, for the average breeder, it is production that tells. R. J. R.

**Treat Your Seed Wheat for Smut**

IN ORDER that we may increase production and lower the cost of wheat it is very necessary to sow good healthy seed wheat. It will pay well to clean the seed several times in a fanning mill, for all grain not plump and bright should be fanned out. Large seed give larger yields than seed of smaller size.

If bunt or stinking smut is prevalent in the community, it will be necessary to spray or dip seed in a formaldehyde solution.

**Spray Treatment.**—Use a quart sprayer filled with one pint of 40 per cent formaldehyde, and one pint of water. The quart will treat 50 bushels of wheat. Leave treated wheat in a pile covered up for five hours.

**Dip Treatment.**—To 40 gallons of water add one pint of 40 per cent formaldehyde. Dip seed for 10 minutes, then spread out and let dry. If you put wheat back in bags be sure to treat bags.

CHAS. F. PHILLIPS,  
County Agent, Amelia County, Va.

**NO, HE WAS TIRED!**

"Some people believe that thirteen at table is unlucky."  
"Wonder if that's why the maker of the multiplication tables stopped at twelve."  
—Boston Transcript.



**DODGE BROTHERS  
BUSINESS CAR**

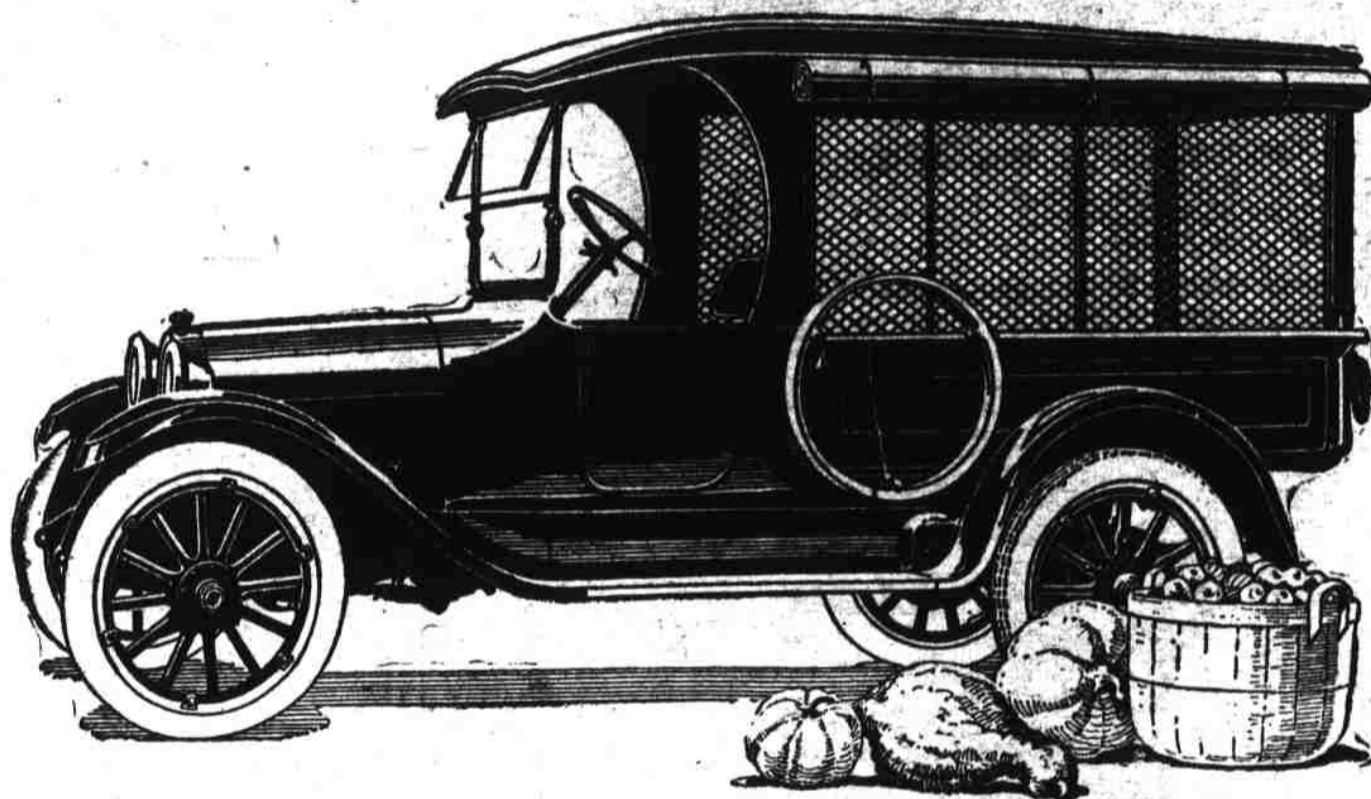
During the war the shell-torn roads of France advertised to the world for all time the wonderful strength and powers of resistance in Dodge Brothers construction.

The Business Car embodies this same splendid sturdiness and ability to stand up under continued hard use, on and about the farm, and to and from town.

It has a universal good name for infrequency of repair and unusually low cost of operation.

Every inquiry you make will convince you that it is ideal for farm use in point of size, weight, capacity, low cost of haulage and long life.

DODGE BROTHERS, DETROIT



**USE PHOSPHATE ROCK AND LIMESTONE  
On Your Land and YOU Will Rake in Dollars Too.**



The "FARMERS' BEST" Raw Phosphate Rock is shipped direct to you from our mines in Tennessee.

Talk this over with your County Agent and write us for prices and "Farm Facts" regarding bigger crops by using Phosphate Rock and Limestone.

**FARMERS' PHOSPHATE & LIMESTONE CO.,**  
Room 825 Empire Bldg., Birmingham, Ala.

**S-C SAW RIG**

Wood and lumber are in big demand at top prices. You can easily make big profits with an S-C Portable Saw Rig. No better outfit made. Simple, powerful, easy to operate. Runs on either gasoline, or kerosene; 2 to 12 h. p. Costs little to operate. Shipped direct at low prices; cash or easy payment terms. Write today for Free Saw Rig Circular and Catalog of S-C Gasoline and Kerosene Engines.



**FREE Feather Bed Bargain Book**

This book shows you how to buy the best direct from the feather bed market of the world and will save you money. You positively make no mistake if you order from us at our rock bottom factory prices. Also tells about our \$5.00 day trial offer. Write for it today. Agents wanted everywhere. Lewis Feather Bed Co., Dept. 157 Nashville, Tenn.

**SEND NO MONEY**

Don't spend your good money for shoddy, lumpy beds. Get beds of Genuine, New Patented and Triple Tested Featherproof Ticking. Shipped direct from Purdy Bedding Factories (Positively only leather factory in country selling direct. Owners of millions.) Highest quality guaranteed or your own money back. No quibbling. Get your copy of our book today. Why pay high prices for inferior chicken beds? Sleep on sanitary, healthful, cozy, new feather beds. Save Money—buy direct at factory prices—From Purdy Bedding Factories. Hurry—write now for our \$10.00—mailed free.

**OUR BOOK FREE**

Purdy Bedding Factories of the Purdy Dept. 313, Nashville, Tenn.