

**How to Transfer Bees**

BEES cannot be properly cared for or profitably kept in any housing except a movable frame hive. This hive is the "patent gum" of certain localities. It is very simple in its construction and



DR. PARKS

allows you to care for your bees. Neglected bees in a movable frame hive are no better off than in a gum. You must care for your bees. You can buy a better movable frame hive than you can make

at a reasonable price.

**I.—What Transferring Is**

BY TRANSFERRING, we mean the moving of the bees from a box, gum or other container into a movable frame hive. In many sections this is the only way to get a start in the bee business; and, where there are many box hives, the careful bee-man has often to transfer them for his own protection. Where disease is known to be present never transfer. In that case destroy the gum.

**II.—When to Transfer**

THE best time to transfer from gums is during the first heavy honey flow in the spring, preferably just before swarming time. Bees can, however, be transferred with success here in the South during any honey flow up to September 15. There are two methods which are very well known among beekeepers. Both have their good points and both their objections. The first or quick method gets the results at once, but it is a sticky, stinging job. The second or slow method requires weeks or months but the mess and stinging are eliminated.

**III.—The Quick Method**

HAVE ready a movable frame hive. Have all but three frames wired and with full sheets of foundation. Smoke the gum well, remove it from its stand and place the hive on the same. Place the open bottom end of the gum against the front end of the bottom board. Cover the opening between the two boxes with pieces of board or a sack. Remove the top end of the gum and smoke the bees until most of them go into the new hive. Split the gum open. Smoke and brush the rest of the bees to the front of the new hive. Remove the best slabs of brood comb. Cut them to fit the empty brood frames and tie in with twine. Fill the frames if several pieces have to be used. See that some honey is included. When the three frames have been filled and placed in the hive remove the clean honey remaining for table use and save all remaining comb for wax.

**IV.—The Slow Method**

HAVE a hive with full sheets of foundation or drawn wax or aluminum combs at hand. The bottom board should have a two-inch auger hole through it about in the center. Smoke the gum well and lay it on its side. Bore a two-inch hole near the center of the upper side. Set the new hive so the hole in its bottom board matches the hole in the side. Close every opening in the gum so the bees must come and go through the new hive. As bees do not like to work below the entrance the queen will soon be found in the new hive. One month after you find the queen in the hive, remove the hive from the gum and close the auger hole. Smoke the bees out of the gum and make wax of the old combs.

Send for free Farmers' Bulletin 961, United States Department of Agriculture, Washington, D. C.

H. B. PARKS.



**DODGE BROTHERS BUSINESS CAR**

The business car pays its way on the farm

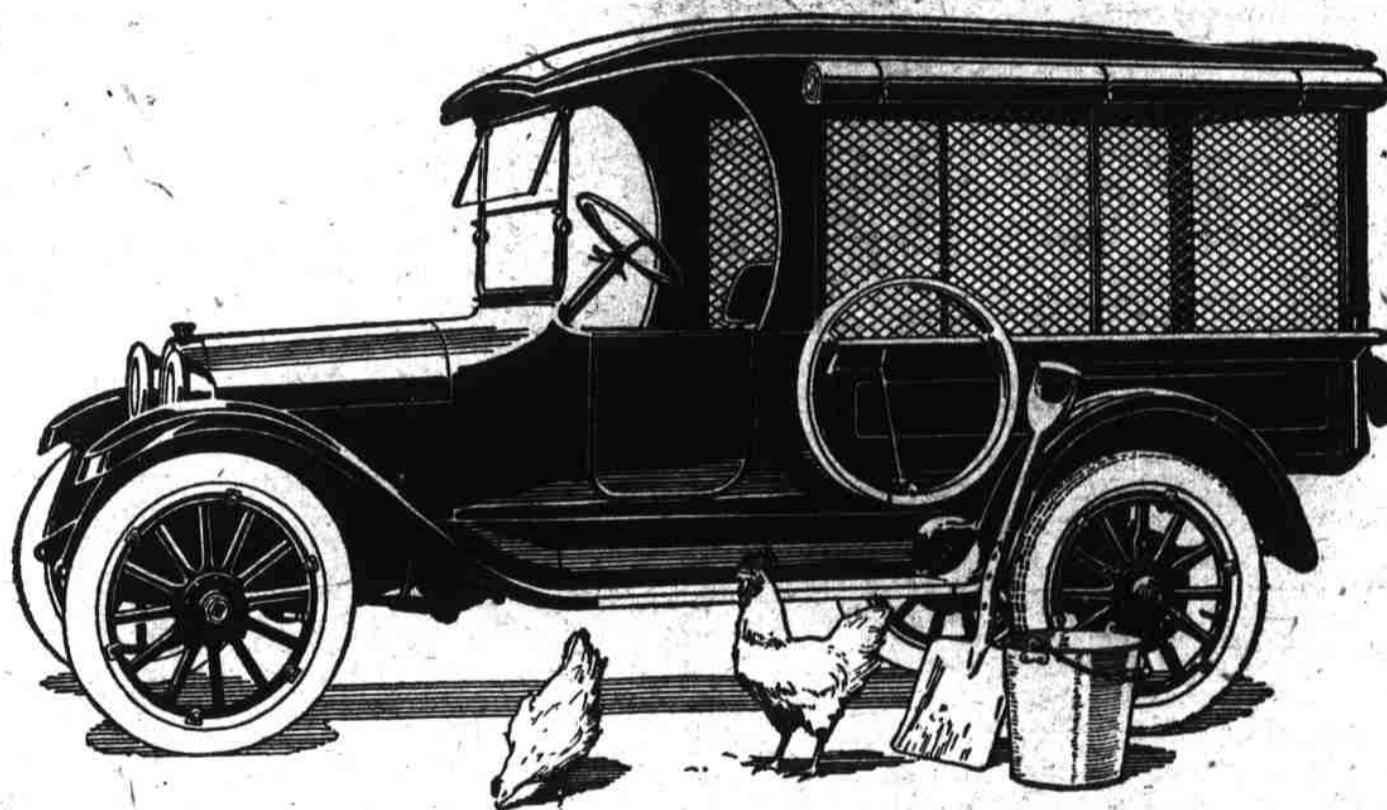
It pays its way because the haulage costs are consistently low

It pays its way because it can be kept constantly going on small chores and big chores without running up a heavy bill of expense

It pays its way because repairs are rarely required

It is strong, sturdy, powerful, and equal to a large proportion of all the hauling jobs that are ever done on the farm

DODGE BROTHERS, DETROIT



**Would You Lend Your HORSE to a Stranger to Test the Effect of Some New Drug?**

Think of this if offered substitutes and imitations instead of

**Blackman's Medicated Salt Brick**

**DON'T EXPERIMENT**

Dr. Blackman computed the exact quantities of sulphur, copperas, saltpeter, and nux vomica required, and these medicines are mixed with salt in making our brick. For 15 years other veterinarians have used it. Take home a dozen bricks today. To be genuine, they must be BLACKMAN'S.

**BLACKMAN STOCK REMEDY CO., Chattanooga, Tennessee**

**2 for \$3.69**

**Send No Money!**

Two wonderful \$5.00 shirts for only \$3.69. Save at least \$2.75. Everybody wearing these semi-dress Gray Flannel Shirts for business, work and sport.

**Franklin Broadcloth Flannel Shirts**  
Two \$3.00 Shirts for Only \$3.69

Made of the quality Franklin Broadcloth Gray Flannel. Special Windsor weaves. One large pocket, faced sleeves and matching pearl buttons. Cut Extra Full. Plain Front Style. Double stitched thru-out. Soft turn-down collar with custom faced mandarin. Thoroughly strength. Try to match these shirts in any store at \$5.00. Yet we offer you two for only \$3.69.

**Send No Money** Write today. Shirts will be sent at only \$2.00 on arrival—no more. Money back of course if not more than pleased with the wonderful value. Be sure to give neck-and-size.

**BURNHAM-BENNETT & CO., Dept. D8212, Chicago**