

Reg'd U.S.
Pat. Office

THE PROGRESSIVE FARMER

Carolinas-Virginia Edition
A Farm and Home Weekly for
NORTH CAROLINA, SOUTH CAROLINA & VIRGINIA
Established 1888, at Raleigh, N. C.

Vol. XXXVII No. 52.

SATURDAY, DECEMBER 30, 1922

\$1 a Year; 3 Years, \$2

Five Live Subjects in This Issue

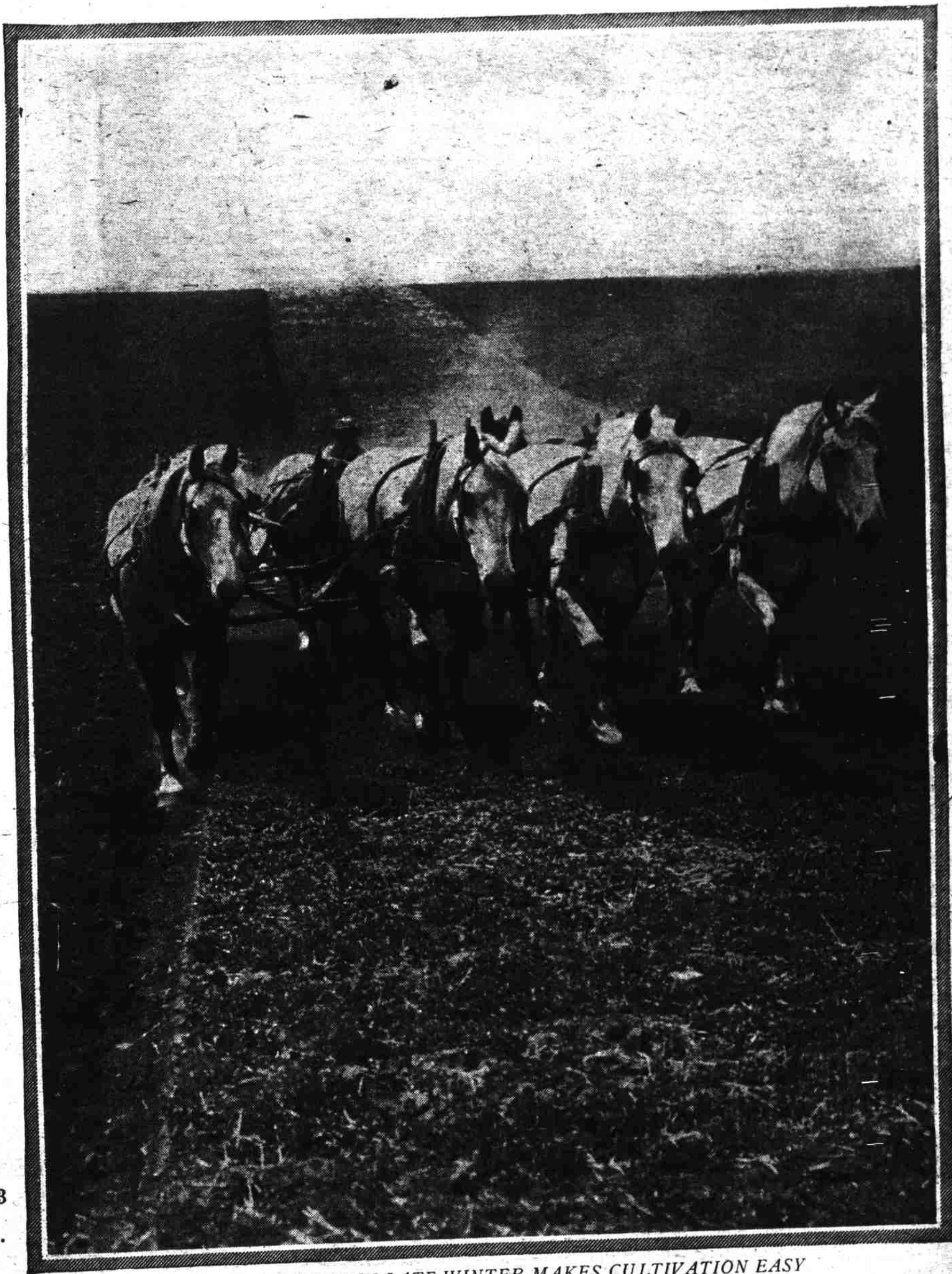
GOOD Things Coming in The Progressive Farmer.—“For 1923 we propose to get back to the old familiar fighting slogan of The Progressive Farmer—‘\$500 More a Year for the Average Southern Farmer: How to Get It.’ This will be the dominant, immediate aim and program—(1) to inspire every reader with an ambition to increase his earning power on the basis of \$500 more a year for our average farmer; and (2) having inspired, to help him actually get that extra \$500.” Read the full announcement. Page 10

From Seven to Seventeen.—“I have recently learned that out of every 100 farm boys in the South between the ages of 14 and 20, only 44 are in school, while 56 are out of school,” says Uncle P. F. “This means that over half the farm boys of the South in this group are not in school. The boys and girls in one Southern state have as their motto: ‘Help the Boy Not in School by Helping Him to Return to School.’ I think this would be a good motto for all our boys and girls.”... Page 16

Southern Women We Should Know.—“Mrs. Rebecca Latimer Felton, who by her appointment to the United States Senate has been honored as no other woman in the United States has been honored before, sends a message direct to readers of The Progressive Farmer.”... Page 14

Livestock and Dairy Problems.—Subjects of interest to the livestock feeder and dairyman are discussed from a practical standpoint. A comparison of cowpea and timothy hay is given, as well as a comparison of roughages in general. Questions about sweet potatoes for hogs and steers are answered. And did you know how necessary it is that the newborn calf receive its mother's milk for the first day or two?..... Page 3

The Florida Method for Controlling Boll Weevil.—This method is the subject of much discussion at present. The principal features of the method are outlined in a concise manner. Page 5



DEEP PLOWING IN LATE WINTER MAKES CULTIVATION EASY
Southern farmers may prefer to use a tractor on level ground. At least a two-horse plow can be used to advantage in breaking land.