

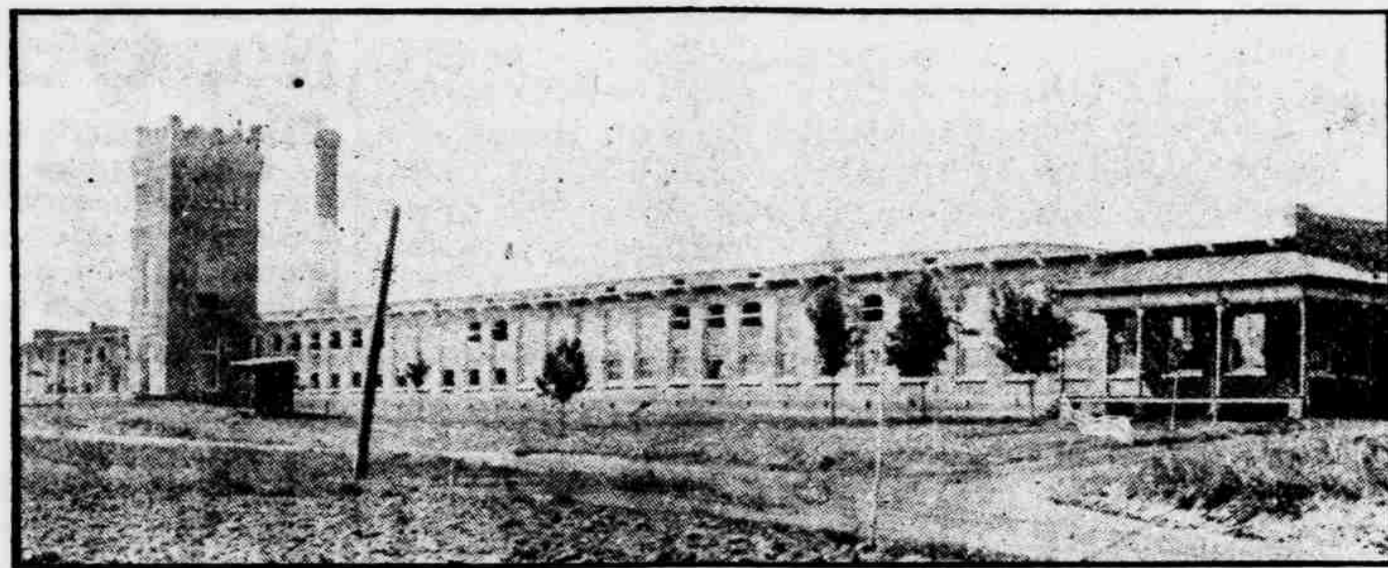
MAIN STREET LOOKING SOUTH



RESIDENCE, MRS. VIC WILSON.

W. A. ERWIN, President,  
West Durham, N. C.

Dr. E. T. WHITE, Vice-President,  
Oxford, N. C.



R. H. LEWIS, Jr., Secy. and Treas.  
Oxford, N. C.

D. F. LANIER, Superintendent,  
Oxford, N. C.

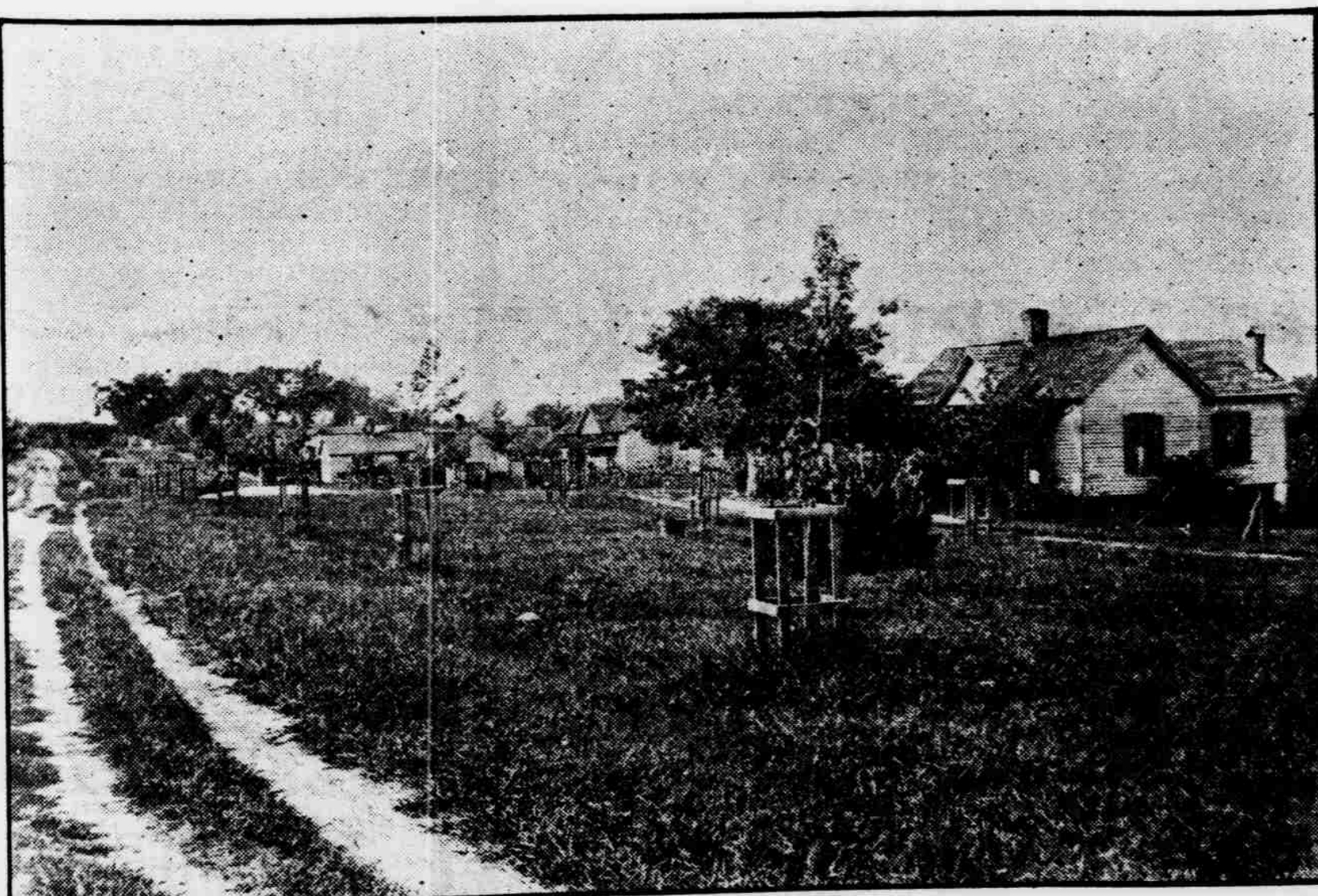
# A Model Textile Plant and Community Is That Of The OXFORD COTTON MILLS

BEAUTIFULLY LOCATED IN WEST OXFORD, N. C., HAS BEEN ONE OF OXFORD'S LEADING INDUSTRIES FOR MANY YEARS. NEARLY TWO MILLION POUNDS OF FINE CARDED COTTON YARN IS SPUN ANNUALLY, AND SHIPPED THROUGHOUT THE UNITED STATES, AND TO ENGLAND, FRANCE, AND SOUTH AMERICA. THE SPLENDID REPUTATION OF ITS PRODUCT ENABLES IT TO OPERATE FULL TIME WHILE OTHER MILLS ARE CLOSED.

THE MILL IS LOCATED ON ITS TRACT OF 100 ACRES, AND THE HOMES OF ITS OPERATIVES ARE ATTRACTIVE IN APPEARANCE, PAINTED AND IN GOOD REPAIR, AND RENT IS ONLY 15 CENTS PER ROOM PER WEEK. THERE ARE ATTRACTIVE GRASS PLOTS AND FLOWERS AROUND THE MILL, AND EVERY HOME HAS A BEAUTIFUL FLOWER GARDEN IN FRONT, AND A VEGETABLE GARDEN IN THE REAR. AS LAND IS PLENTIFUL, EACH HOUSEHOLDER IS FURNISHED WITH ALL THE LAND HE WILL WORK.

THE BAPTISTS, METHODISTS, AND EPISCOPALIANS HAVE CHURCH SERVICES NEAR AND IN THE MILL VILLAGE, WITH BARACA AND PHILATHEA CLASSES, AND LARGE AND SUCCESSFUL SUNDAY SCHOOLS. AN EXCELLENT EIGHT MONTH PUBLIC SCHOOL IS MAINTAINED ON THE MILL VILLAGE, WITH A NIGHT SCHOOL LAST YEAR FOR THOSE INTERESTED. MANY OF ITS OPERATIVES COMING TO THE MILL A FEW YEARS AGO NOW OWN THEIR OWN HOMES NEARBY.

ONLY PEOPLE OF GOOD MORALS ARE WELCOME AT OXFORD COTTON MILLS, AND LIVING CONDITIONS HERE ARE EXCEPTIONAL, THE ENTIRE VILLAGE BEING ONE OF THE SHOW PLACES OF OXFORD. MORAL AND LIVING CONDITIONS AND SURROUNDINGS, HOMES, CHURCHES, AND SCHOOLS, EXCELLENT NEIGHBORHOOD, AND HEALTHFULNESS OF THE PLACE, WITH GOOD RUNNING WORK FULL TIME AT GOOD WAGES, ALL COMBINE TO MAKE THE OXFORD COTTON MILLS A MOST DESIRABLE PLACE TO LIVE AND WORK.



MAIN STREET LOOKING NORTH.



RESIDENCES, W. B. HOBGOOD AND W. T. BYRD.