

Raleigh Lady Gains 25 Lbs. By Taking Tanlac

"Tanlac increased my weight twenty-five pounds in less than six weeks' time, entirely overcoming two years of serious stomach trouble," recently declared O. G. Amosson, 212 South Dawson St., Raleigh N. C. "About four years ago stomach trouble, with severe indigestion and constipation, had me in a terribly run-down condition, and my nerves were so unstrung I couldn't keep still. Everything I would eat soured on my stomach, causing gas, bloating, severe headaches and such dizzy spells that I could hardly stand up. Pain around my heart and between

my shoulders made me roll and toss nights so I got but little sleep. "Tanlac quickly corrected all this, put me to eating and sleeping fine, quieted my nerves, did away with headaches, pains and constipation, and built me up so I hardly knew myself. When feeling run-down I still take Tanlac, and soon get relief. Tanlac has no equal." Tanlac is for sale by all good druggists. Accept no substitute. Over 37 million bottles sold.

Take Tanlac Vegetable Pills.

—Any sensible young man will draw the line at cigarette-flavored kisses.—Mobile News-Item.

—The purpose of the Governor's Conference with President Colidge is presumably to lengthen the time between drinks.—Mobile Register.

—When a "dark horse" is groomed for the presidency the operation is practically noiseless.—Mobile Register.

SUBSCRIBE TO OXFORD PUBLIC LEDGER \$1.50 Per Year in Advance

THIS DAY AND YOU

(Ralph Waldo Trine)

"IN TUNE" WITH THE INFINITE"

The Generator Of Gladness.
Were to formulate a section for a "life cred," I would put it in this form: To take and to live always in the attitude of mind that compels gladness, looking for and thus drawing to us continually the best in all things—being thereby the creator of our own fortunes.

There is no quality that exerts more good, that is of greater service to all people during the course of the ordinary life, than the mind and heart that goes out in an all-embracing love for all; that is the generator and the circulator of a genuine, hearty, wholesome sympathy, courage and good cheer; that is not disturbed or upset by the passing occurrence, little or great, but that is serene, tranquil and conquering to the end—that is looking for the best, that is finding the best and that is inspiring the best in all.

There is, moreover, no quality which brings such abundant returns

to its possessor, by virtue of the thoughts and feelings that it inspires and calls forth from others—and that come back laden with their peaceful stimulating, healthful influences for him.

On the other hand, the small, the peevish, the glomy, grumbling, panicky, critical cast a sort of deadening, unwholesome influence wherever they go.

They get, however, what they give; for they inspire and call back to

themselves thoughts and feelings of the kind they are sufficiently stupid to allow a dominating influence in their own lives.

People ruled by the mood of gloom attract to themselves gloomy people and glomy conditions.

The cheerful, confident, tranquil in all circumstances are continually growing in these same qualities, for the mind grows by and in the direction of that which it feeds upon.

This process of mental chemistry

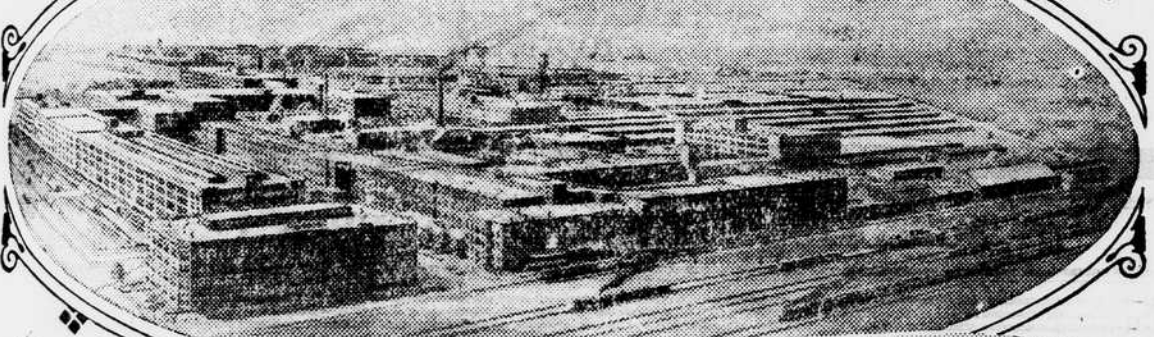
is continually working in our lives, bringing us desirable or undesirable conditions according to our own prevailing mental states.

Squeeze Out a Tear.

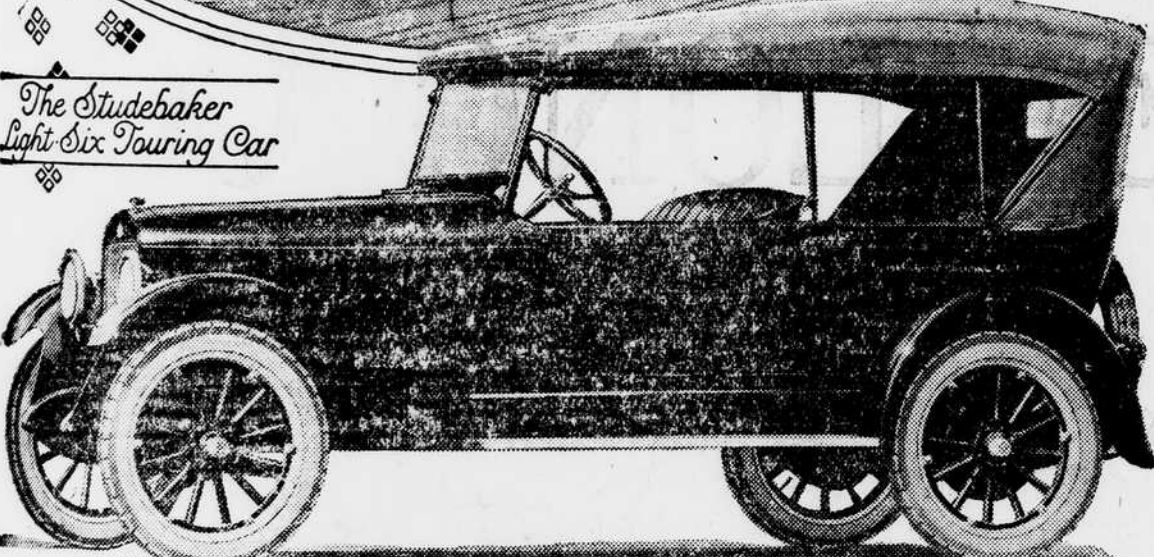
(Toledo Blade)

This is the way many Americans feel about it: Poor old Germany. She's getting no more than she deserves.

Production of Motor Cars in Big Volume Requires Vast Resources and Facilities



The Studebaker Light Six Touring Car



Top picture shows Plant 2 of The Studebaker Corporation, South Bend, where the Light-Six models are manufactured complete. The middle view shows Plant 1, also at South Bend, where the open and closed bodies, springs, windshields, etc., for all models are made. Studebaker's Detroit plants are not shown in the above illustrations.

STUDEBAKER'S production record of 110,540 cars for the first eight months of this year—surpassing the record for the entire year of 1922—has caused wide comment in motor and business circles.

In an effort to keep pace with demand, Studebaker produced, during the month of August, a total of 15,700 cars, which broke all records for a single month's production, and indications point to a continued, heavy demand.

Such an achievement requires enormous physical and financial resources, an idea of which may be gained by the knowledge that Studebaker's actual net assets total \$90,000,000 including \$45,000,000 in

to give the purchaser the benefit of savings effected.

One of the striking innovations and efficiency ideas in the new factory is to be found in the building where final assembly is carried on. Here an improvement on the familiar conveyor system used in automobile factories is employed.

Endless Chain to Completion

Moving along on an "endless chain" behind each frame upon which a car is assembled is a carrier upon which the various units that go into the car are hung. These units, such as transmission, steering assembly, axles, etc., are stocked alongside the endless chain, and placed on the carriers as they go by.

When the last of these units is hung upon the carriers, the actual assembly of the complete car begins, under careful and expert supervision, an improvement upon the former method of long drawn-out, piecemeal assembly. The arrangement of this progressive assembly also provides for the mechanical handling of all material, and it reduces to a minimum the cost and confusion of moving stock.

The sub-assembly building, where the various units themselves are assembled, is four stories high, of reinforced concrete construction, and has an interior bay open to the roof. The bay is covered with a glass skylight, and is equipped with crane service and landing balconies on all floors for the quick and economical handling of materials.

The bay also has a depressed unloading track with accommodations for ten freight cars. In this sub-assembly building are located the store-rooms, tool departments, machinery maintenance and repair departments, together with factory administration offices and employees' restaurant.

The great building that houses the stamping department which represents an investment of \$4,000,000, is of steel-frame construction, with tile roof and glass sides. Heavy metal-forming presses manufacture the frames, fenders, hoods and other stamped parts of the car, while huge ovens are utilized for the baking of the enameled pieces.

Visitors who make the trip through the Light-Six factory always like to linger in this department, watch the interesting processes performed—veritable miracles they seem—and study the remarkable economies in operation, as well as the perfect accuracy and efficiency with which each task is completed.

Modernity of Facilities

Among many notable features of manufacture which illustrate the modernity of facilities of the Light-Six plants are the machine shops which alone represent an investment of \$7,000,000. Here the Light-Six crankshafts and connecting rods are machined to very accurate limits on all surfaces, a practice that is largely responsible for the practical elimination of vibration in the Light-Six—a practice that is followed exclusively by Studebaker on cars at the Light-Six price. Sixty-one precision operations are required on the crankshaft alone.

The South Bend plants contain 4,875,000 square feet of floor space. They employ 12,000 persons. They cost \$33,250,000. The South Bend forge plant cost \$4,000,000, the power plants \$2,500,000 and the assembly and stock plants cost \$5,000,000. The new foundries now under construction will cost over \$2,000,000.

Attention! To All Car Owners

Due to increase cost of distilling water for Batteries, and reduction in prices on Batteries we are forced to make minor charges for servicing batteries here to fore furnished by us free.

Beginning November the first we, the undersigned, will make charges for servicing batteries as follows:

- Filling with distilled water 15c
- Refilling and cleaning 25c
- Other charges based on time and material used.

Signed

A. D. CAPEHART (Exide)
OXFORD BATTERY Co. (Willard)
GRANVILLE MOTOR CO. (Prest-O-Lite)

FARMERS Take Notice The Johnson Warehouse

Will sell your tobacco for the highest market prices always. We are taking this means of informing you that that the better grades of Tobacco have advanced in price this week. We have first sale Monday. Load up and come on.

YOU SHALL BE PLEASED!

Sam Watkins