

A Great Dearth!

The enormous demand for WELTS has caused a great dearth of these goods. We have succeeded in finding a few pieces that are excellent values. We have them in White Pink and Blue. Come quick, they won't last long.

THE NEWEST OF THE NEW for Shirt waists and Dresses is the Linen Swiss with colored dots worked in--not printed

A GREAT SUPPLY.

That's what we have in WHITE GOODS for WAISTS and DRESSES--and PRINTED FABRICS, too. We have made sweeping reductions in all these.

We make a SPECIAL DISPLAY of HAMBURG EMBROIDERIES and LACES on first centre table this week. It is for your benefit--for ours, too.

The McCall Bazar Fashion Sheets and Magazine for July

have just been received by us, and are ready for distribution. The sheets are given FREE to those who call. Beautiful designs are shown in their July issue, not found elsewhere. We would like to keep in touch with our customers living at a distance. If you will inclose your address to us we will mail you fashion sheets each month free of charge. The subscription price of the Magazine is only 50 cts per year, and you get any Pattern you may select FREE.

J. R. C. BROWN, Jr's

Under Meroney's Opera House, Main St, Salisbury, N. C.
STORE CLOSSES AT 7:30 P. M.



A SUMMER SECRET

that everyone doesn't understand is how to dress comfortably and handsomely at the same time. If you examine our up-to-date stock of CLOTHING you will find that we have selected the coolest and most elegant fabrics for the Summer, and we have them in all the leading styles, at prices that will surprise you.

SMOOT BROS. & ROGERS.

LOOK!

Just Received at WALKER & SCARBORO'S Bargain Store Another Shipment of Hot Stuff.

Mousselin, worth 15c, going at 10c. Belgian Stripes, worth 12½c at 8c. Remnants in figured Dimity, worth 12½c at 7. Crepons in Black, White, Cream and Tans. Ladies' Silk Fringe Ties, Jewel Belts, Variagated Crochet Cotton. Ladies' Silk Mitts. Calicos and Gingham 3 to 5 cts; Lawns 2½ cts. UMBRELLAS and PARASOLS. 24 yards Worsted Soudock. Braid 10 cts.

A CLEAN SWEEP

Brooms enough to sweep the town. 15c Brooms for 10c, and others in proportion. 2 cakes Laundry Soap 5c. A few dozen of those 20c Hose still going at 10c.

ONE CENT ARTICLES.

25 Needles, 1c; 1 Paper Pins, 1c; 2 Balls Thread, 1c; 24 sheets Paper, 1c; 25 Envelopes, 1c; and many other things.

Terms Strictly CASH.

WALKER & SCARBORO,

2nd Door from Stand Pipe. Fisher Street.

REV. WALTER LINGLE WRITES.

(Continued from Saturday.)

The second night found us at the natural bridge. It far surpassed all my expectations. It is grand and sublime. Well does it deserve to be among the world's seven wonders. From the top of the bridge to the stream below it is 225 feet. The bridge is about 90 feet wide and 40 feet thick. A wagon road passes over it and one might well cross the bridge without ever knowing it, were his attention not called to the fact. In vain I looked for George Washington's name which he is said to have carved high upon the walls.

For a mile up the stream the scenery is very beautiful. Indeed it is one of the prettiest places I ever saw--an ideal place for a bridal tour, as I remarked to my friend. We both made note of that, in case we ever have occasion to take such a tour, if we ever do. Reluctantly we left the bridge. One could tarry there a month.

Don't talk about the road from the bridge to Lexington, please. It is what the school girl would call "awful." The truth is we walked and pushed our wheels. It is only 16 miles and the thermometer was only 88 in the shade. At Lexington the rains caught us and we pitched tents there for some days--from Saturday afternoon until Thursday morning. But it was not with a particle of regret, as Lexington is chock full of interesting things and cordial people. It would take a book to contain all I might say about Lexington. Here is the Washington and Lee University and the Virginia Military Institute. One can scarcely imagine a more beautiful place than the campuses of these institutions. The Memorial Chapel is a place of great interest. Here are some very old and very fine paintings of distinguished artists. Here also is the room General Lee used for his study while President of Washington and Lee University. It remains just as he left it. His books, papers, letters and all lie untouched. In another room is the famous recumbent statue of Lee by Valentine. It is a very fine piece of sculpture. It is life size and represents the great chieftain in his uniform as he lay in his tent catching some sleep after a hard fought battle. Below is the vault where he now lies, asleep until the Resurrection morn.

Afterwards I went to the cemetery to see the grave of Stonewall Jackson. There is a handsome monument built over the grave, and on this a bronze statue of General Jackson. This cemetery contains the graves of a great many distinguished dead.

On Thursday morning we turned our faces towards Staunton, 36 miles away. The road is usually good but the rains had made them very rough. We arrived in Staunton in time for supper, but looking somewhat the worse for wear. I can illustrate our looks by an incident. As I stood in the door of a hotel watching our wheels while my friend inquired about rates, a man with a cigar turned to me and said very abruptly, "Get me a match." I replied that I had none. He quickly apologized by saying, "O, beg your pardon, sir. I thought you were the porter." Nor did he seem to realize that the apology was worse than the insult.

(Continued.)

The largest egg is that of the ostrich. It weighs three pounds, and is considered equal in amount to twenty-four hens eggs.

Furnished rooms to let. Apply to Miss A. S. Rutledge, East Main St

BUILDING LOTS FOR SALE.--Desirable building lots, or for manufacturing plants, on either side of Long street, on Railroad, half way between Salisbury and Spencer. For cash or on terms. Apply to Jno. Beard or McCubbins & Jordan.

Dress Goods at a Sacrifice!

For the next 20 days--Good till June 25th--we will have on sale the following extraordinary

Bargains in Summer Wear:

2,000 yards	12½c.	Sea Island Percale (best Percale made) at	7½c. yard.
2,000 "	8c.	yard-wide Percale, all new styles,	5½c. "
3,000 "	8c.	Dimities and Leno, nice patterns,	4½c. "
2,500 "	8c.	Organdies, choice designs,	4½c. "
1,500 "	10c.	" " " "	6c. "
2,000 "	15c.	Fine Lawns, elegant styles,	8½c. "
2,000 "	5c.	Lawns,	2½c. "
1,000 "		Cheese Cloth, all colors,	2½c. "

75c. Ladies' Shirt Waists, at 55c.	Ladies Collars, 5c.
50c. Ladies' Shirt Waists, at 39c.	Ladies' Collars, 10c. pair.
40c. Ladies' Shirt Waists, at 29c.	Ladies' Crash Skirts, 38c.

An immense lot of

Laces of all description, also Hamburg Embroideries at a bargain.

Don't Fail to Take Advantage of this Offer.

Very Truly,
VICTOR WALLACE.

SPECIAL SALE

FRIDAY, JUNE 3d, '98.

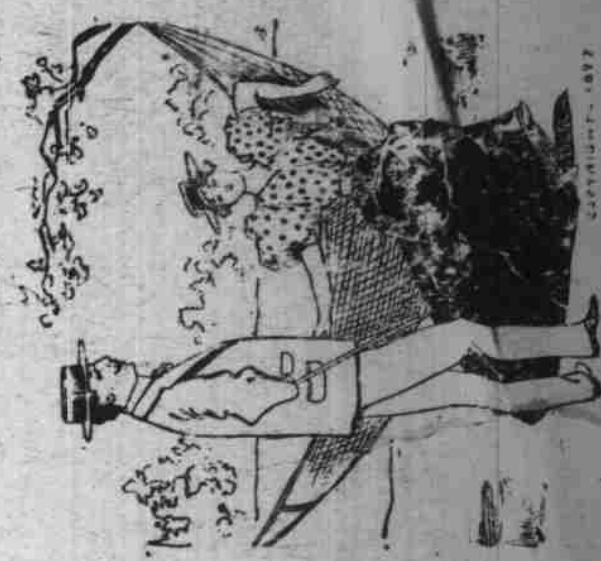
We will sell at a big discount our entire line of SHIRT WAISTS and SHIRT WAIST GOODS in

Lawn, Organdie AND Percale.

THIS SALE FOR ONE DAY ONLY.

J. H. REID,

Carolina Racket.



THE HAT

is the most noticeable feature of a man's wearing apparel. We can suit your hat taste perfectly. If you want rough straw or a fine straw we can meet your desire at a reasonable figure. Style in every hat.

Brown Clothing Co.

Mortgage Sale.

Pursuant to the provisions contained in a mortgage trust deed, registered in book 9, page 264, et seq. made by the Dixie Land Company for protection of the Perpetual Building and Loan Association of Salisbury, N. C., on the 12th day of September, 1882, the said mortgage having been assumed by other parties to whom the mortgaged property was transferred, and default having been made in the payment of the debt which the said mortgage was given to secure, the undersigned will sell at the court house door in Salisbury, on

Wednesday, June 8th,

for cash, the following property: A house and lot--beginning on the east side of Clay street, 50 feet from the south intersection of Clay and Bank streets, Dr. R. M. Eames' corner thence with the edge of Clay street 50 feet to the corner of lot No. 40, of Smithfield plot of Brooklyn; thence 200 feet parallel with Bank street to a stake; thence 50 feet parallel with Clay street to Dr. Eames' corner, and thence 200 feet with Dr. Eames' line to the beginning, being lot 39 of Smithfield's plot of Brooklyn. For full particulars see mortgage registered in book 9, page 264, etc., to satisfy debt provided for in said mortgage. This the 6th day of May, 1898.

THEO. F. KLUTTZ, Trustee.

Notice

On and after February 1st the

Rockwell Park Dairy

will sell Milk at 20c. per gallon, 5c. per quart.

Pure Jersey, one-fourth Cream, best in the market. Try it and be convinced.

Butter Milk 10c. per gallon. Cream 25c. per quart. Smere case Cheese 10c per pound; fresh every day.

Leave orders at T. F. Young's store.

Respectfully,
JOS. H. MCNEELY,
Prop. Rockwell Park Dairy

Lumber! Lumber!

A Complete Line of Building Material MOBILIZED.

When you want a house you will find everything necessary to its completion within our

Fortifications.

Two very necessary adjuncts to our FLEET is the Famous Limeton (Va.) lime wood-burnt and the best on the market, now on sale. Also the exclusive sale of the

CELEBRATED ASBESTOS PAINT manufactured by H. W. John's Mfg. Co., New York, which is now in stock.

GIVE US A CALL.

Cordially,
C. A. RICE.