

# \$33 TO California

From Chicago, every day, March 1 to May 15, 1905, to San Francisco, Los Angeles, Santa Barbara, Sacramento and many other points in California. Tickets good in tourist sleeping cars. Rate for double berth, Chicago to San Francisco, Los Angeles, Santa Barbara, Sacramento and many other points in California, \$7. Through train service from Union Passenger Station, Chicago, via the

## Chicago, Milwaukee & St. Paul AND Union Pacific—Southern Pacific Line

If you are thinking of such a trip, this is your opportunity to make it at least expense.

Handsome book descriptive of California sent for six cents' postage.

F. A. MILLER,  
General Passenger Agent,  
1245 Railway Exchange,  
CHICAGO.

W. S. HOWELL,  
General Eastern Agent,  
321 Broadway,  
NEW YORK CITY.

Complete information will be sent free on receipt of this coupon with blank lines filled. Coupon should be mailed to-day.

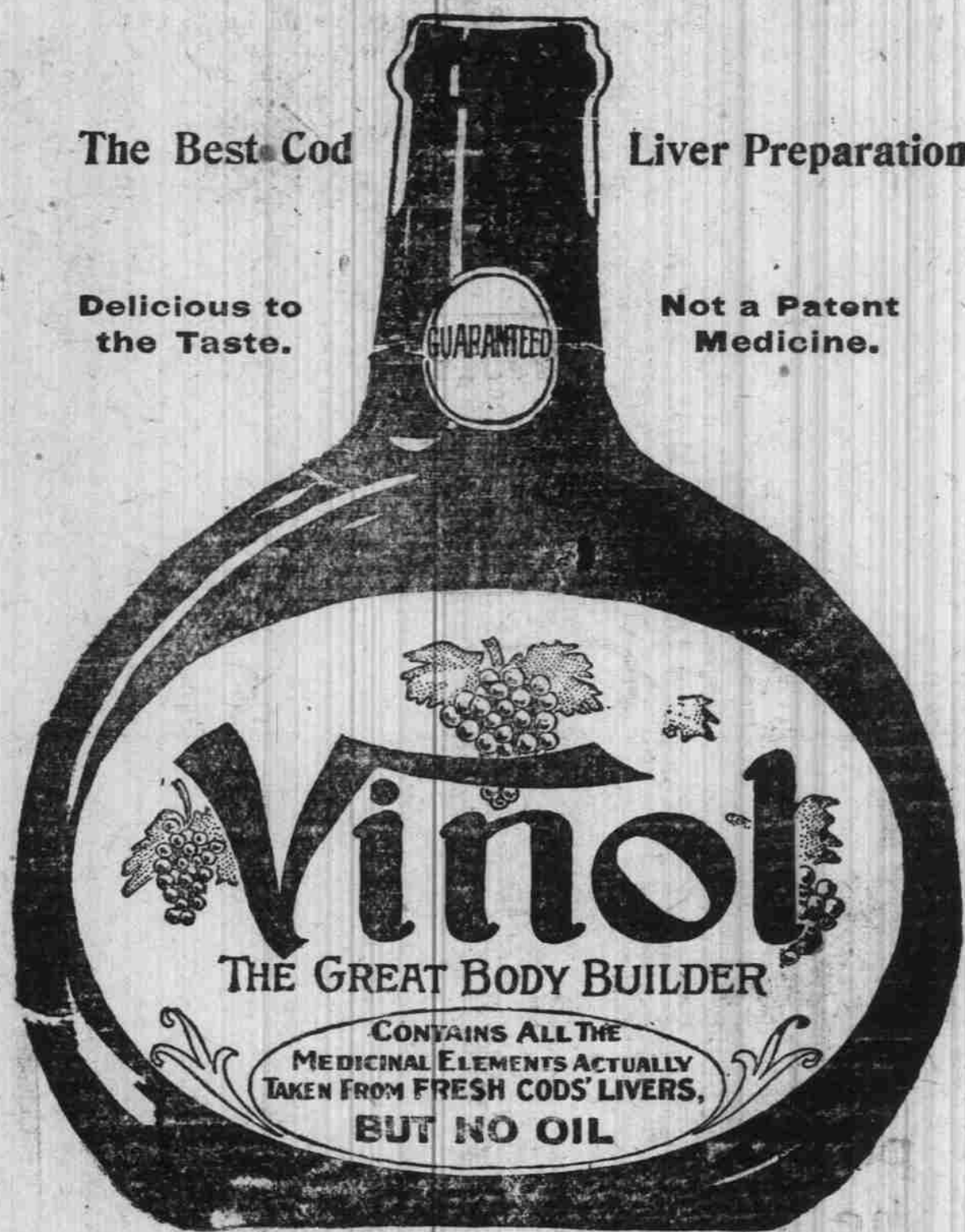
Name \_\_\_\_\_  
Street Address \_\_\_\_\_  
City \_\_\_\_\_ State \_\_\_\_\_  
Probable Destination \_\_\_\_\_

IT BUILDS YOU UP,  
and KEEPS YOU UP.

The Best Cod Liver Preparation

Delicious to the Taste.

Not a Patent Medicine.



Vinol contains ALL the medicinal elements of genuine, fresh cod's livers and their oil; with organic iron, and other body building ingredients, in a deliciously palatable and easily digested form. It is everywhere recognized as the greatest

### BODY BUILDER AND STRENGTH CREATOR

known to medicine—Vinol is the only cod liver preparation which contains no oil, grease, or any disagreeable feature, and sold on a positive guarantee of "money back if it fails to give satisfaction."

For Old People—Puny Children—Weak Women—Debilitated, All Tired Out People—Nursing and Weak Mothers—To Gain Flesh—To Get Strong—All Weak People—Chronic Colds—Hacking Coughs—Bronchitis—Lung Troubles—Nothing equals Vinol.

Try it—if you don't like it, we return your money.

### GROWTH OF THE Wachovia Loan & Trust Company.

SINCE ITS ORGANIZATION, JUNE 15, 1892:

	Deposits	Assets
Dec. 15, 1893,	\$ 29 708.93	\$ 211 985.14
Dec. 15, 1894,	147 908.53	267 712.90
Dec. 15, 1896,	236 379.20	469 408.24
Dec. 15, 1898,	552 194.84	801 167.36
Dec. 15, 1900,	909 002.42	1 172 341.96
Dec. 15, 1902,	1 188 739.13	1 536 657.51
Dec. 15, 1904,	1 047 634.68	2 309 370.71
Mar. 14, 1905	3 372 036.89	4 124 404.10

WE WANT MORE BUSINESS  
Salisbury Saving Bank Building

The Salisbury Bakery  
The best and cheapest place to buy your

Bread, Cakes and Pies.  
A full line of Fancy Candies, Tobaccos and Cigars.

LUNCH ROOM IN CONNECTION.  
Phone 76.

NOTICE ONE  
J. H. HESS,  
PAINTING AND PAPER-HANGING.

Satisfaction Guaranteed. Call on or address,  
J. H. HESS, Spencer, N. C.  
Agent for Post's Imported Waller

All The Money in California is not from its gold fields. Fortunes are made from the wheat fields and the fruit farms. Why not investigate the chances there? Tickets, \$33 Chicago to California, via Chicago, Milwaukee & St. Paul Railway, Union Pacific and Southern Pacific line, daily, March 1 to May 15, 1905. Rate for double berth, \$7 Chicago to San Francisco, Los Angeles, Santa Barbara or Sacramento. Tourist folder, with complete information, sent free on request. F. A. Miller, General Passenger Agent, Chicago, or W. S. Howell, 321 Broadway, New York.

### Confederate Veterans' Reunion

Louisville, Ky., June 14, 16.  
For the above occasion the Southern Railway will sell tickets to Louisville, Ky., and return at rates named below: Goldsboro, \$14.55; Raleigh \$15.60; Durham \$13.05; Greensboro \$11.95; Winston-Salem \$11.35; Salisbury \$11.00; Statesville \$10.50; Charlotte \$11.10; Concord \$11.45. Approximately low rates from other points. Tickets sold June 10th, 11th, 12th and 13th with final limit leaving Louisville, June 12, 1905, provided tickets are officially stamped by Joseph Richardson, Special Agent. Original purchaser may secure an extension of final limit to leave Louisville not later than July 10th, 1905 by depositing ticket in person with Joseph Richardson, Special Agent at Louisville, Ky., between the hours of 8.00 a. m. and 8.00 p. m., June 10th to 19th inclusive, and upon payment of a fee of 50 cents.

General J. S. Carr has selected the Southern Railway, via Asheville, Knoxville and Harriman Jet as the official route for his veterans' special, which will consist of first class day coaches, and standard Pullman cars to be handled through to Louisville without change. These special cars will leave Raleigh at 3.30 p. m., Monday, June 12th, 1905. Berth rate from Raleigh and Durham \$4.50, Greensboro \$4.00, Statesville and Hickory \$3.50. Two persons can occupy a berth without additional cost. Excellent service on regular train in both directions. Ask your agent for rates from your station.

For further information, and Pullman reservations write  
R. L. VERNON,  
Trav. Pass. Agent,  
Charlotte, N. C.

### EXTREMELY LOW RATES

Announced Via the Southern Railway.

Extremely low rates are announced via the Southern Railway from points on its lines for the following special occasions:

Athens, Ga.—Summer School, June 27 July 28, 1905.  
Atlanta, Ga.—National Association of Manufacturers, May 16-18, 1905.  
Bristol, Tenn.—Annual Meeting German Baptist Brethren, June 6, 1905.  
Charlottesville, Va.—Virginia Summer School of Methods, June 26-Aug. 4, 1905.

Fort Worth, Tex.—General Assembly Southern Presbyterian Church, May 18-26, 1905.

Hot Springs, Va.—Southern Hardware Jobbers Association and American Hardware Manufacturer's Association, June 6-9, 1905.

Kansas City, Mo.—Southern Baptist Convention, May 10-17, 1905.

Knoxville, Tenn.—Summer School June 20, July 28, 1905.

Monteagle, Tenn.—Monteagle Bible Training School July 3-August 15, 1905

Monteagle, Tenn.—Monteagle Sunday School Institute, July 17-August 5, 1905.

Monteagle, Tenn.—Woman's Congress, August 1-15, 1905.

Nashville, Tenn.—Peabody College, Summer School, Vanderbilt Biblical Institute, June 14-August 9, 1905.

Oxford, Miss.—Summer School University of Mississippi, June 14-July 26, 1905.

Richmond, Va.—Farmers' National Congress, September 12-22, 1905.

Savannah, Ga.—National Travelers' Protective Association of America, May 16-23, 1905.

Savannah, Ga.—Southern Golf Association, May 9-13, 1905.

St. Louis, Mo.—National Baptist Anniversary, May 16-24, 1905.

Tuscaloosa, Ala.—Summer School for Teachers, June 16-July 28, 1905.

Rates for the above occasion open to the public.

Tickets will be sold to these points from all stations on the Southern Railway.

Detailed information can be had up of the Southern Railway, or Agents of connecting lines, or by addressing the undersigned:

R. L. Vernon, T. P. A., Charlotte, N. C., J. H. Wood, D. P. A. Asheville, N. C., Manager, Washington, D. C., W. H. Taylor, General Pass. Agent, Washington, D. C.

Handy to all Theatres and shops

Out of the noisy section

Telephones, Electric clocks and

Electric Lighting Devices in every room

Location IDEAL

OVER \$250,000

HAS JUST BEEN

Expended Remodeling, Redecorating & refurbishing

Moderate rates prevail

Particular attention given to detail

Insuring perfect service

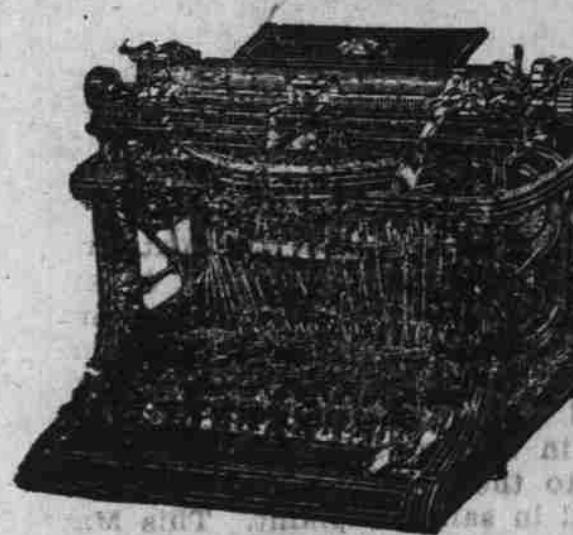
Restaurant noted for its fine cooking, moderate prices

Empire Square, Broadway Sixty-third Street

NEW YORK CITY

W. Johnson Quinn, Prop  
Send for guide to New York Free

Advertisement in The Sun, it pays



### Every Business Man

Is looking for

The Best Typewriter

and every Agent

Thinks He has it.

The Fox Typewriter

SPEAKS FOR ITSELF

I HAVE SOME BARGAINS

In second hand Machines

taken in exchange for the

— FOX —

S. H. WILEY

At Davis & Wiley Bank.

Salisbury, N. C.

BEST FOR ALL MACHINES

Advertisement in The Sun, it pays

COMPOSITE-OBSERVATION CARS

"Something entirely new has been placed on the Overland Limited trains. It is a composite-observation' car. It affords women passengers an opportunity of enjoying the scenery with the greatest comfort and free from the fumes of tobacco smoke. Through-out the car there has been placed a series of steel arches, which bind sills and sides together and strengthen the roof in a manner which renders the car almost indestructible."—Chicago Chronicle.

The Overland Limited leaves Union passenger station, Chicago, 6:05 p. m., daily. Arrives San Francisco the third day in time for dinner. Route—Chicago, Milwaukee & St. Paul railway, Union Pacific and Southern Pacific line.

Personally Conducted excursions in Pullman Tourist sleeping cars from Chicago to San Francisco, Los Angeles and Portland without change via the Chicago, Union Pacific and North-Western Line. Colonist oneway tickets on sale March 1st to May 15th only \$33.00 from Chicago, with correspondingly low rates from all other points. Double Berth in Tourist Sleeping car only \$7.00. Booklets with maps and full in stamps, W. B. Kniskern, P. T. M., C. & N. W. Ry., Chicago.

LIFE IN CALIFORNIA

Not only does California's beauty and climate add to the pleasure of life there but living is cheap also. Fruit and vegetables in abundance. Low rates via Rock Island System March 1 to May 15. A quicker trip in tourist sleeper than by any other line. Cost as low as the lowest—service the best. Tourist folder, with complete information, from John Sabastian, Passenger Traffic Manager, Rock Island System, Chicago.

Itch cured in 30 minutes by Woolford's Sanitary Lotion. Never falls sold by Jas. Plummer, Druggist, Salisbury, N. C.

Advertisement in The Sun, it pays

### SCENIC ROUTE TO THE WEST

SHORTEST, QUICKEST and BEST

from

NORTH CAROLINA to the WEST

Connection with Southern Railway's No. 36 at Lynchburg, Va., daily; with S. A. L. and A. C. L. at Richmond, Va.

Leave Charlotte . . . . . 9:25 a.m.

Leave Salisbury . . . . . 10:43 a.m.

Leave Lexington . . . . . 11:13 a.m.

Leave Greensboro . . . . . 12:10 p.m.

Arrive Lynchburg . . . . . 3:54 p.m.

Leave Lynchburg . . . . . 4:10 p.m.

Leave Richmond . . . . . 2:00 p.m.

Arrive Virginia Hot Springs 10:00 p.m.

Arrive Cincinnati . . . . . 8:00 a.m.

Arrive Louisville . . . . . 11:00 a.m.

Arrive Chicago . . . . . 5:30 p.m.

Arrive St. Louis . . . . . 6:28 p.m.

Morning trains from Statesville and Norwood via Southern Railway, connect at Greensboro.

ONLY ONE NIGHT ON THE ROAD

Parlor car from Lynchburg to Clifton Forge. Through Pullman Service from Richmond and Clifton Forge to Cincinnati, Louisville, St. Louis and Chicago, with direct connections for the West, Northwest and Pacific Coast.

Vestibuled, electric lighted trains with Dining Cars.

Purchase tickets via C. & O. Route. For other information and Pullman reservation, address

W. O. WARTHEN,  
District Passenger Agent, C. & O. Ry., Richmond, Va.

H. W. FULLER,  
General Passenger Agent.

SOUTHERN'S TIME TABLE

Schedule took effect January 9th, 1905.

North Bound

32 Palm Lim., Pullman . . . . . 1:17 a.m.

8 Local, Coaches . . . . . 5:17 a.m.

36 Fast Mail, Coaches, Pullman and Dining cars . . . . . 10:43 a.m.

40 Florida Lim., Coaches, Pullman and Dining cars . . . . . 11:30 a.m.

12 Local; Coaches, Norfolk Pullman . . . . . 8:55 p.m.

38 South West Lim., Pullman 9:30 p.m.

34 Florida Ex. Coaches, Pullman . . . . . 11:28 p.m.

40 Atlanta Ex., Coaches Pullman . . . . . 11:40 p.m.

South Bound

31 Palm Lim., Pullman . . . . . 3:35 a.m.

39 Atlanta Ex. Coaches and Pullman . . . . . 5:40 a.m.

33 Florida Ex. Coaches, Pullman and Dining cars . . . . . 7:05 a.m.

37 South West Lim., Pullman 8:18 a.m.

11 Local; Coaches, Pullman . . . . . 8:30 a.m.

7 Local; Coaches . . . . . 3:07 p.m.

29 Florida Lim., Coaches, Pullman, Dining car . . . . . 8:30 p.m.

5 Fast Mail; Coaches, Pullman, Dining car . . . . . 8:50 p.m.

West Bound

11 Local and Through leaves 8:25 a.m.

35 Through; leaves . . . . . 8:50 p.m.

12 Local and Through leaves 8:35 p.m.

30 Through; arrives . . . . . 11:25 a.m.

Northwood Branch

47 Mixed; leaves . . . . . 6:00 a.m.

21 Passenger; leaves . . . . . 11:30 a.m.

48 Mixed; arrives . . . . . 5:00 p.m.

22 Passenger; arrives . . . . . 7:15 p.m.

SPECIAL RATES

Round trip colonist rates, to Texas, Oklahoma, Louisiana and Indian Territory, each first and third Tuesday. One-way and round trip colonist rates to the West and Northwest. One-way colonist rates to California and the Northwest from March 1st until May 15th 1905. Special first-class round trip rates to Colorado every day until May 1st. Return limit June 1st 1905. The choice of the two most direct routes and three gate-ways.

Union and Southern Pacific

Through Pullman tourist cars operated each Monday from Birmingham and three cars a week from Washington, D. C. to San Francisco, via Atlanta, Montgomery and New Orleans, without change. Effective March 1st we operate every Wednesday and Monday Pullman Tourist cars from St. Louis to San Francisco without change via the Chicago & Alton R. R. and the Union Pacific R. R., via Kansas and Denver.

Ask for particulars.  
J. F. Van Rensselaer,  
General Agent.

Administration Notice to Creditors  
Having qualified as administrator of Eudora L. Graham, deceased. Notice is hereby given to all persons holding claims against deceased to present same duly verified to me on or before the 18th day of March 1905, or this notice will be pleaded in bar of their recovery.  
All persons indebted to deceased must make immediate settlement. March 16th 1905.  
W. M. GRAHAM Adm.  
EUDORA L. GRAHAM.  
B. B. MILLER atty. Mch 18t

\$100—Dr. E. Detchen's Anti-Diuretic may be worth to you more than \$100 if you have a child who soils bedding from incontinence of water during sleep. Cures old and young alike. It arrests the trouble at once. \$1. Sold by Jas. P. Plummer, Druggist, Salisbury, N. C.