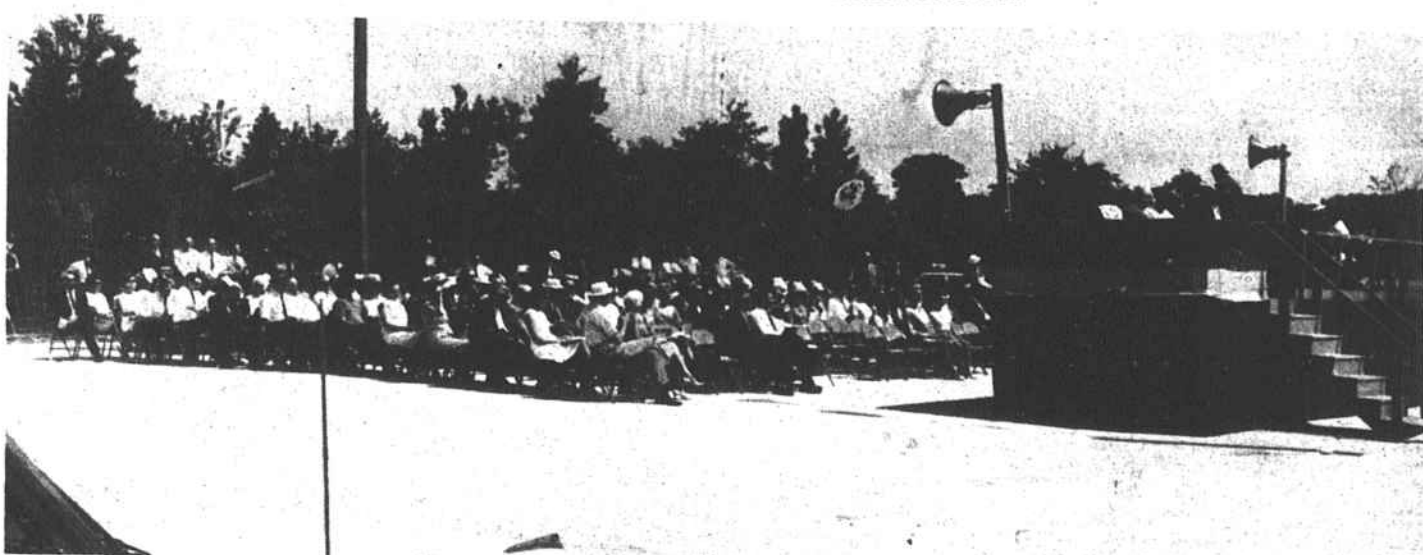




WELCOME CENTER ON I-85 IN WARREN COUNTY



PART OF CROWD PRESENT FOR DEDICATION OF WELCOME CENTER

Water And Sewer Survey For Entire County Approved By Warren County Planning Board

The Warren County Planning Board on Monday gave approval for a water and sewer survey for the entire county after officials of the FHA and engineers with Russell and Axian appeared before the county commissioners and members of the Planning Board.

Representing the Farmers Home Administration were James Elam, county director, and Paul V. Park, district FHA supervisor. Engineers present were Hugh B. Stokes and Myron Hagworth, with Stokes serving as speakers.

Elam and Park told members of the two boards that it would be necessary for a planning survey to be approved before federal loans or grants could be obtained. The survey is to be made at no cost to the county.

Stokes explained principally to the commissioners the purpose of the survey and the value to the county of a water and sewer comprehensive plan. He said that it would enable small communities to obtain a water and sewer system, some-

times by extension of lines from larger communities and sometimes by cooperative efforts of communities. It would also enable municipalities to extend their lines outside the city limits with government assistance and to run water and sewer lines to industrial sites.

The plan would be of great value in the proper development of many sub-divisions on Gaston Lake, the engineer said. Stokes said that the comprehensive plan might call for the extension of 12-inch water mains alongside the principal highways of the county, with 6-inch lines running from these to various communities.

Approval of the survey by the Planning Board will enable the engineers to begin work through a federal grant in the near future.

Sheriff Clarence A. Davis and A. D. Pridgen, following a report that the old stable at the Nathaniel Macon home place, was in a bad state of repairs, were asked to visit the site and get an estimate of the cost of repairing the building.

On motion of Commissioner Richard Davis, seconded by Commissioner Robert Thorne, Jim D. Hemm was hired as assistant cow agent. The County Attorney was instructed to prepare a notice

for bids for an addition to the Welfare building excluding heating, plumbing and lighting, and then bids for heating, plumbing and lighting.

Brent Shinault, Land Appraiser, appeared before the board to present a schedule for land valuations, which was approved. The schedule provides valuations for open and cultivated lands ranging from \$50 to \$250 per acre depending on quality and location; timberland from \$90 to \$250; woodlands from \$50 to \$100; cut-over from \$30 to \$50; farm ponds from \$250 to \$500; pasture land from \$80 to \$250; orchards from \$150 to \$300; and tobacco at 50¢ per pound.

It was ordered that Charlie Moses Smith, Leonard J. Paynter and Charles D. Williams, Jr., each be issued a beer license upon receipt of their state permits.

J. H. Hundley, Register of Deeds, reported 109 marriage licenses issued for the quarter ending June 30, for which \$545 was turned into the general fund.

On motion of Commissioner R. R. Davis, seconded by Commissioner A. J. Ellington, Allen T. Norwood was recommended for county forest ranger.

Governor Is Speaker

Warren Hosts Dignitaries At Welcome Center Dedication

Warren County was host to Governor Dan K. Moore and other high dignitaries of the state last Thursday when North Carolina dedicated its first two Welcome Centers in ceremonies at the Center on I-85 near the Virginia line. The other Center is located on I-95, also near the Virginia line.

Governor Moore was the principal speaker. The event was attended by more than 1,000

persons including high state officials, legislators, representatives of the travel industries, and city and county officials from Warren, Northampton, Vance and Halifax counties and many other sections of the state. Raleigh sent a large delegation, distinguished by flat straw hats with printed name bands.

County Commissioner Alford J. Ellington read an ad-

dress of welcome from Commissioner Chairman Amos L. Capps, who was not able to be present. J. Guy Revelle, chairman Northampton County Commissioners, welcomed the guests on behalf of his county. The dedicatory ceremonies covered both stations with Welcome Center hostesses from Northampton County assisting in the ceremonies.

J. W. York chairman of the

Board of Conservation and Development, was master of ceremonies for the exercises which began at 11 a. m. The invocation was given by the Rev. Bernard M. White-Hurst, pastor of the Rosemary Baptist Church of Roanoke Rapids. Guests were recognized by York and Governor Moore was introduced by Joseph M. Hunt, Jr., chairman of the State Highway Commission.

The Governor said that in future years travel could well become the largest and most profitable industry in all of North Carolina. He added that the two welcome centers, on two main arteries into North Carolina, "will give us an excellent opportunity to develop tourism," and declared "it is essential that we get these visitors off the Interstate highways and into the heart of our state."

The Welcome Center on I-85 is situated on a knoll overlooking the highway, with abundant parking space and with picnic conveniences available. The building property is in two sections, one with pamphlets on counties attractions in the state, maps and information, and staffed by four young lady hostesses. The other consists of rest rooms for the tourists. All services offered are free to visitors.

Governor Moore said establishment of two Welcome Centers is "one of the most progressive steps taken by this administration to encourage and promote tourism." Travel he described as "an industry without smokestack," and is big business in North Carolina. He cited statistics showing that last year out-of-state travelers spent over \$400 million. North Carolina, and Tar Heels traveling inside the state spent over \$235 million. "Some 100,000 North Carolinians actively make their living in the travel industry," which is growing at the rate of nine percent each year, a record far ahead of growth figures for other retail businesses.

The Governor said the Welcome Centers are "both unique and of tremendous importance for the state." He praised the "foresight of members of the 1967 General Assembly which appropriated funds," and said requests would be made for five additional centers in 1969, and envisioned a "large network all across the state." Chairman Joseph M. Hunt, Jr., of the State Highway Commission said that more miles of highway had been built, more industry acquired and travel increased during the Moore administration than ever before.

A flag raising ceremony followed the Governor's address with raising of the Stars and Stripes and the flag of the State of North Carolina. In this part of the program York and Bill F. Hansley, director of the travel and promotion division of C&D, officiated. The Color Guard were MSG Joe G. Creech, Commander; MSG George H. Holland, Jr., SFC John P. Taylor, Sp5 Samuel R. Edwards, Jr., and Sp4 Wilbur L. Howell, Jr., Woody Hayes accompanied at the organ the singing of the National Anthem, led by Alexis Parker.

York told the audience that the exercises were held at the I-85 center because work had not been completed on I-95. This, he said, relieved the C&D of an embarrassing choice.

A number of state concerns provided light refreshments for the crowd which sweltered in 90-degree temperature for the outdoor ceremony. The North Carolina Peanut Growers Association of Rocky Mount provided small packs of peanuts and the Pepsi-Cola Company furnished drinks. Materials for the uniforms of the hostesses was given by Burlington Industries, and General Electric appliances and connections by Walker-Martin, Inc., of Raleigh.

Welcome Center hostesses for both units were present to assist in serving the visitors. Those for the I-85 facility are Rachel W. Petty, Alexis Parker, Linda W. Fleming and Sandra Perkinson. For I-95 the hostesses are Patricia Hartley and Rachel Petty, manager of both Welcome Centers.

Hail, Wind Damage Is Heavy

Approximately 60 acres of tobacco were struck by a hail and wind storm near Paschall on Saturday afternoon.

L. B. Hardage, county extension chairman, who investigated the fields following the storm, said yesterday that the total estimated damage to tobacco and the soybean crop is \$40,000. He said very little damage was done to other crops in this section.

Most of the damage was found on the farms of C. C. King, Ralph Tolbert, Wright Bolton, Sr., Wright Bolton, Jr., Mrs. I. A. Bolton and Sons, Luther Perkinson, Arthur Holt King, Marvin King, C. L. Myrick, Garland Myrick and Solomon Potat.

Hardage said that most of the farmers carried some hail insurance; however, according to information received from the farmers with damage, there was roughly 14 acres belonging to three farmers with no insurance.

The actual damage varied from 90 to 100 percent on some farms down to 30 to 35 percent on others.

"This, I think," Hardage said, "illustrates very well the risks involved in farming but dare say all of the above will be planting tobacco again in 1969."

All-Stars Play

The Senior Little League All-Stars were scheduled to play a team composed of parents and coaches at the John Graham High School athletic field last night (Wednesday) beginning at 8 o'clock.

The purpose of the game, Ted Wilson said yesterday, is to raise badly needed funds for the Little League.

IN HOSPITAL

Patients in Warren General Hospital on Tuesday afternoon were listed as follows:

Mary Pitchford, Malvin H. Felts, Claude White, Peytonia Rogers, Graham Horne, Brantley Overby, John Willie Thrower, Celean Portlock, Moses Kearny, James West, Silas Curtis.

Total Social Security In Warren \$143,870

A record \$143,870 was paid out in social security cash benefits to 2,494 residents of Warren County for February, Robert A. Flynn, Raleigh Social Security District Manager, announced this week. This was an increase of \$25,951 over the amount paid out for Dec. 1966.

"February 1968 was the first month in which increased benefit rates provided by the 1967 Amendments to the Social Security Act were payable," Flynn noted.

Nationally, the amount of monthly benefits exceeds \$2 billion, an increase of more than \$360 million above the December 1966 figure. More than 24 million men, women, and children, or nearly 1 out of every 8 Americans, are now receiving some type of monthly benefits exceeds \$2 billion, an increase of more than \$380 million above the December 1966 figure. More than 24 million men, women, and children, or nearly 1 out of every 8 Americans, are now receiving some type of monthly benefits.

About 18.4 million of those receiving benefits at the end of February were 62 or older. An additional 2.2 million were disabled workers under 62 and their young dependents.

About 3.4 million social security beneficiaries were young widowed mothers and their children, the district manager said, noting that a total of about \$19 billion has been paid to orphaned children and their mothers since January 1940 when monthly survivors benefits first became payable.

In the past 6 years alone, benefit payments to this "younger group" have amounted to 1 1/4 times as much as

the amount paid out in this category during the preceding 21 years.

Many younger people also receive benefits due to disability. More than \$176 million is being paid each month to more than 2.2 million workers and their dependents — a number that is 10 percent higher than that of December 1966.

"Most of the changes in the 1967 social security amendments provided more protection for younger people," Flynn noted. For instance, some 175,000 children are now eligible for benefits based upon the earnings of a mother who has died or is entitled to disability or retirement benefits. Previously, women needed to have worked for at least one and a half of the last three years. However, that requirement has been removed. Payments can now be made to the children of a woman worker who has died, become disabled, or retired if she has enough work credits — earned at any time — to be "fully insured."

Another change made 100,000 younger persons — disabled workers and their dependents — eligible for benefits. The amount of social security work credits required for the payment of benefits to workers who become totally disabled before they reach 31 years of age has been reduced substantially — for those below 24 years of age, to as little as a year and a half of coverage. Some 65,000 widows, unable to work because of severe disability, were able to get monthly benefits as early as age 50. Dependent disabled widows also became eligible for payments, and in some cases, so did divorced wives of deceased workers.

Fertilizer Dem. To Be Held At Fleming Farm

Farmers who are interested in saving money on their fertilizer bills are urged by L. B. Hardage, county extension

chairman, to join a tour of the R. E. Fleming and Sidney Fleming Farm near Vicksboro on Friday, Aug. 9 at 7 p. m., when an "Economy of Fertilizer" demonstration will be held.

Bobby Fleming will discuss the fertilization program and the cost per acre of different treatments. Hardage said farmers will be surprised at the amount of cash money saved by using certain analysis of tobacco fertilizers.

This demonstration is sponsored by the Warren County Extension Service and the N. C. Extension Service in cooperation with the Fleming Brothers.

Persons traveling Highway 401, are asked to turn right at Hecks Grove school and follow the Henderson road about one-half mile. Those traveling from Vicksboro will find the Fleming farm about two miles going towards Louisburg.

chairman, to join a tour of the R. E. Fleming and Sidney Fleming Farm near Vicksboro on Friday, Aug. 9 at 7 p. m., when an "Economy of Fertilizer" demonstration will be held.

Bobby Fleming will discuss the fertilization program and the cost per acre of different treatments. Hardage said farmers will be surprised at the amount of cash money saved by using certain analysis of tobacco fertilizers.

This demonstration is sponsored by the Warren County Extension Service and the N. C. Extension Service in cooperation with the Fleming Brothers.

Persons traveling Highway 401, are asked to turn right at Hecks Grove school and follow the Henderson road about one-half mile. Those traveling from Vicksboro will find the Fleming farm about two miles going towards Louisburg.



Hostesses at the North Carolina Welcome Center on I-85, which was opened last Thursday, are, left to right: Alexis Parker, Sandra Perkinson, Sara Harrison, supervisor, Linda Fleming and Rachel Petty, manager of both Welcome Centers.