

# The Warren Record

VOLUME 73 Subscription: \$3.00 A Year; \$4.00 Out Of State, 10¢ Per Copy

WARRENTON, COUNTY OF WARREN, N. C.

THURSDAY, JANUARY 1, 1970

NUMBER 1



Ice-covered trees tower over Warrenton Baptist Church here last Friday morning following ice storm of Christmas night. The storm caused considerable damage to trees here and over the county and caused long power interruption in many rural sections of the county. Some 45 extra crewmen were brought into the county early Friday morning. All lines were cleared and repaired by Saturday afternoon.

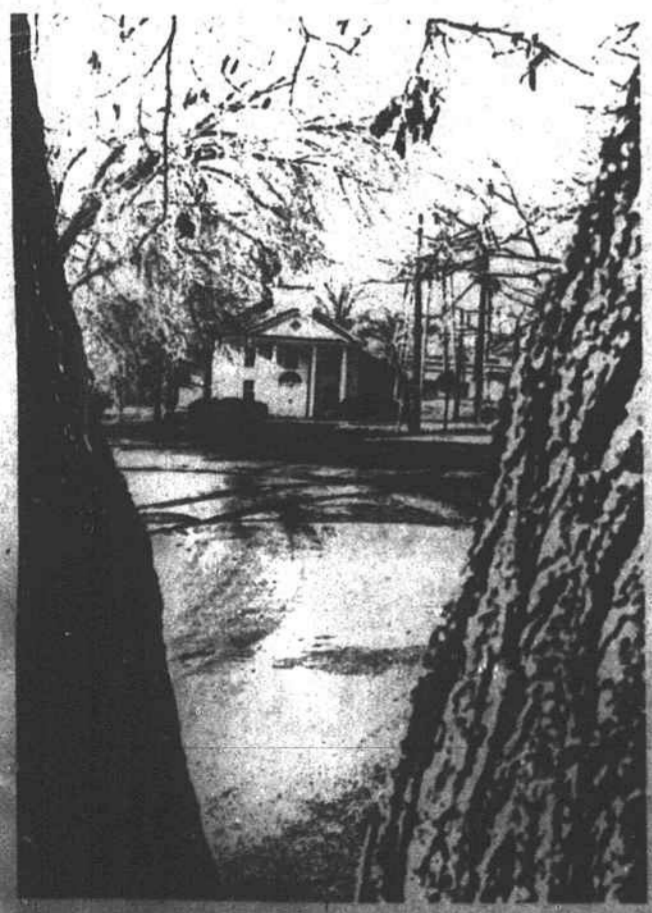
## Ice Storm Causes Heavy Damage To Trees, Lines

Warren County, missing a white Christmas, suffered a rather destructive ice storm Christmas night that afforded a tinselled Friday morning.

Principal damage was to trees and to power lines in all sections of the county. The weight of ice broke limbs on many shady trees and in some cases whole trees, as well as doing considerable damage to forests.

While electric power was only off for a few hours at Warrenton early Friday morning, it was Saturday afternoon before the last line in the county was repaired by linesmen working around the clock.

Crews from other towns began to pour into Warrenton before 3 a. m. Friday morning and some 45 workmen joined local linesmen in making repairs. Principal damage was caused by ice-coated limbs



Ice-covered trees frame North Warrenton Baptist Church on Friday morning following ice storm.

## Poverty Status To Be Studied

Franklin-Vance-Warren Opportunity, Inc., the local anti-poverty agency, will hold its second meeting with representatives of the low-income residents of Warren County on Thursday, Jan. 8, at 7:30 p. m. at the Warren County Courthouse, Frederick P. Hege, executive director, announced yesterday. The meeting is open to the public.

Hege said that members of the board of directors will continue to deal with issues raised by poor residents at the December meeting when residents voiced their concerns.

Chief among the concerns, he said, was the high cost of food and the high price of food stamps. Another food item causing concern was the cost of school lunches which were said to be burdensome upon the low-income residents.

A second major concern was the low wages received for employment in Warren County. This problem is magnified by the seasonal nature of much of the employment available.

Other concerns to be considered, Hege said, are problems facing the physically handicapped, the high cost of medical care and transportation to medical centers, poor housing facilities, a lack of jobs for low-income residents, employment discrimination, and other minor problems relating to government agencies.

## Rep. Fountain To Be At Warrenton Jan. 6

Rep. L. H. Fountain will visit Warren County next week to greet his friends and to discuss any congressional problems in which they may be interested.

Congressman Fountain will be at the Warrenton Post Office on next Tuesday, Jan. 6, from 2 p. m. to 5 p. m. In making the announcement, Congressman Fountain expressed the hope that many of his friends in the area would greet him.

## Birthday Calendars Are Now On Sale

The Warren County Community Birthday Calendars are now on sale and may be purchased at the J. & R. Red and White Store, Dick Miles, chairman of the calendar committee, announced yesterday.

The calendars, sponsored by the Warrenton Lions Club, lists individual birthdays, civic and fraternal club meeting dates and also town and county board meeting dates. Proceeds will be used for work with local blind persons.

Miles said the supply is limited and will sell for \$1.00.

## Flue-Cured Production Could Be Larger In '70

Some slight increase in flue-cured tobacco production could occur in 1970 despite a reduction in quotas of 5 percent.

The announced quota is 1,071 million pounds. If the quota and the allowance for undermarketings of 137 million pounds are fully produced in 1970, the total supply could be up slightly, according to North Carolina State University economists.

The strong 1969 prices may be hard to match next marketing season. Economist Jim Allgood said that, even though the support price will be increased 3.5 percent, prices received by farmers may not rise much due largely to the fact that the average for 1969 was a strong 72 cents per pound, well above support level.

The flue-cured situation in this U. S. flue-cured production was estimated at 1,058 million pounds.

(See TOBACCO, page 4)

## COURT TO CONVENE MONDAY



ESSEX-HOLLISTER FACTORY BUILDING

## Factory At Hollister To Open Soon

The Hollister-Essex Garment Company building at Hollister is nearing completion and is expected to be in operation during February.

A pilot plant located in the Halliwa School in Warren County began operation on Dec. 8 and is now training 15 women. This number is expected to reach 30 by February when the operation is transferred to the factory at Hollister. The plant will employ about 150 when in full operation.

The Hollister-Essex Garment Company is owned and managed by Robert Wallace of Nashville and manufactures children's clothing. Two styles of dresses for young girls are the present production order.

The clothing is designed and sold by Sharlyn's Fashions of New York. The Hollister plant receives cut patterns and completes the production of the wear.

Wallace is managing the plant while his wife assists in the supervising. The pilot plant supervisor is Mrs. Dean Clay of Enfield.

## Criminal Cases To Be Tried

The January Criminal Term of Warren County Superior Court will convene on Monday morning with Judge Edward B. Clark of Elizabethtown presiding.

Two murder cases, three manslaughter cases and 12 cases of drunk driving are among the large number of cases scheduled to be tried during the first four days of the week. Few cases hold county-wide interest. The docket follows:

Monday - Leandrew Williams, breaking and entering; Jessie Lou Richardson, possession of non-taxpaid whiskey, possession of whiskey for purpose of sale, and resisting arrest; Fred Harvey, assault and robbery; James Howell, hit and run; Robert Otis Baker, second offense of drunk driving and driving without a valid operator's license; Cleveland Hawkins, two counts of assault on female; Sandy Fields, assault with a deadly weapon; Allen W. Brown, drunk driving; Durwood C. Johnson, drunk driving; Arthur Gunter Sumner, worthless check; Lawrence Paul Wyatt, drunk driving; Nathaniel Ellis, operating a motor vehicle while license suspended.

Tuesday - James Daniel Lynch, driving while license revoked; James Edward Overby, assault on female, and larceny; Harry Lee Hopkins, driving without valid operator's license, and hit and run; Roosevelt Alston, Jr., assault with a deadly weapon; Jimmy Murry, assault and assault on female; Eddie Glenn Pearce, drunk driving; Frank Hargrove, drunk driving, resisting arrest, and assaulting an officer; William Meadows, public drunkenness, second offense in one year; Mitchell Lance King, breaking and entering and improper advances; William Thomas Dickerson, larceny.

## Local Government Cost In Warren \$199 Per Capita

NEW YORK—Is the cost of local government higher or lower, for residents of Warren County, than it is for people in other areas?

How much is spent locally, per capita, for all municipal and county operations and for all special services? How does the local governmental debt compare with the average elsewhere?

A news report, just released by the Census Bureau, sheds light on these matters. It is based upon a detailed study of financial data gathered from every county in the United States.

The study, entitled Census of Governments, is the first made since fiscal 1962. They are conducted every five years.

For people living in Warren County, the figures show, the total cost of local government operations came to \$199 per capita in the year.

In the rest of the nation, the average was \$299 per capita and, in the State of North Carolina, \$207.

It took a total of \$59.5 billion to operate the various county, township, municipal and district governments in the country and provide the public with services in the fields of education, health, welfare, roads, sanitation, parks, housing, libraries, police and fire protection and the like.

That represented an increase of \$19.7 billion in the period of five years.

In some communities, the amount spent for local government operations was adequately covered by revenues. In many others, however, more was spent than was taken in.

The figures for Warren County show that the direct expenditures, \$199 per capita, were offset by general revenue receipts equivalent to \$209 per local resident.

Some \$61 of this revenue came from local taxes and the remainder from Federal and state payments.

In order to finance their expenditures for capital improvements and other needs, many communities have been forced to go deeper into debt.

Warren County's outstanding debt is listed in the report as \$33 per capita. Nationally, the debt of local governments averaged \$410 per capita. Those in North Carolina averaged \$167.

## License Office To Open Here

A local office for 1969 motor vehicle licenses will be opened in the Taylor Building on Main Street on Jan. 2 under the direction of Mrs. Roy Pat Robertson.

Office hours will be from 9 a. m. to 5 p. m. Monday through Friday, and from 9 a. m. to 1 on Saturday.

The new reflectorized red and white plates will go on sale throughout the state on Jan. 2. The plates expire Dec. 31 and their use beyond that date is permissible only if they are duly registered by the Department to the vehicle on which display is made. Owners who have their vehicles properly registered by the Department have until Feb. 16 to obtain new plates.

The new application cards necessary for obtaining 1970 license plates were placed in the mail on Dec. 18. Department of Motor Vehicle officials expect this huge mailing, estimated at more than 3,000,000 cards, to be delivered by Jan. 1.

Motorists will be paying more for their 1970 plates than they have been paying in the past. The registration fees were increased 25 per cent by the 1969 Legislature. This does not apply to North Carolina's amputee war veterans and those war veterans having a 100 per cent disability rating by the Veterans Administration. They will get their tags free.

The local license agent, Mrs. Robertson, points out that "to renew a plate you must have a renewal card" and cautions against the misplacing of it when it is received. She also asks motorists to open the envelope, read the instructions and complete the application according to instruction before presenting it for a new plate. This will expedite insurance and keep lines from forming.

Motor vehicle owners who have not received their license application cards by early January should notify the Department of Motor Vehicles in Raleigh. "It will take you from ten days to two weeks to get one and you should, therefore, act promptly," Mrs. Robertson said.

## 'Information Exchange' To Be Held At Butner

BUTNER—A program known as the "Information Exchange" offers the community an "open house" once each week to discuss their interests and concerns and will provide counseling and information regarding normal everyday problems of living. The Exchange, sponsored by the Mental Health program of Vance, Warren, and Granville Counties is an outgrowth of research that has been conducted in Vance County.

Groups meeting with citizens to detect problems and unmet needs in the community have revealed that many people have mild or moderate level emotional problems that are not of severe enough nature to require individual psychiatric help. Yet, they would like to be able to discuss their problems with some understanding person who could give them information and help. It is hoped that the "Information Exchange" will provide this need.

The Exchange will be held each Tuesday afternoon at 1:00 at the Family Counseling and Education Center located on the corner of Chestnut and Pettigrew Streets in the former Episcopal Church Rectory. Each session will be of 1 1/2 hours duration and there will be an opportunity for individual and group participation, as well as discussion. Confidentiality, of course, will always be honored and records will be maintained. No fees will be collected and no appointments are needed. Anyone is welcome to walk in and join the group.

Mental Health professionals and local mental health aids will be on hand to listen, to exchange ideas, to provide information, and to discuss prob-

lems. Dr. W. C. Hollister, Director of the program said, "The Exchange offers a unique procedure for learning and for giving a service to a large number of people with minimum staff. We do not purport to have all the answers nor to be able to satisfy all the concerns that are expressed. We do know however, that we can all learn from each other's experiences."

## Gold Supply

WASHINGTON—The nation's monetary gold supply dropped to \$11.17 billion during November, \$10 million below the stock at the end of October, the Treasury Department said Monday. The dip came after 16 months of almost uninterrupted increases in the stock which is set aside to redeem dollars held by foreigners.

## Mr. and Mrs. R. D. Baskerville of New Bern, Mr. and Mrs. John VanPelt of Sharps, Va., and Mr. and Mrs. William R. Baskerville and children of Eureka, Va., spent the holidays with Mrs. W. R. Baskerville and attended the Burwell-Beery wedding.

Mrs. Crichton Thorne Davis spent the holidays in Nassau.

## In Hospital

Patients in Warren General Hospital at 5 p. m. Tuesday were listed as follows:

Dorothy Clifton, Mary Traylor, Anna Clark, Gid Tharrington, William Newell, Charles Capps, Bertha Hecht, Sally Mitchell, Albert Bugg, Emma Gibson, Alton Grissom, Ann Collins, Alice Wyckoff, Margaret Holtzman, Michael Callahan, Alfred Ellington, Henry Stevenson, Gus Otis Carroll, Herbert Rooker, Keith Douglas, Henry Pitchford, John Russell, Jr., Curtis Silver, Howard Robinson, William Henderson, Eddie Crews, Lena Davis, Charlie Cole, Dinka Hays, Bernard Hunt, Patsie Barwick, Dorell Boyd.

## Bids To Be Asked

Among highway bids to be opened by the North Carolina State Highway Commission in Raleigh on Jan. 20 is a project in Granville and Vance Counties on I-85.

The project calls for paving and signing I-85 from northeast of US 158 near the Vance County line east to US 158 near Henderson and improvements from SR 1128 near Santa Parham Hospital, 2.25 miles.