



Mrs. Curtis' pitcher and wash basin: an historical enigma.

Pitchers Keep Pouring In For Resident Of Drewry

By KEN FERRUCCIO
Staff Writer

There is more to history than the glory that was Greece and the grandeur that was Rome. There is also the story of how one proud pitcher entered the home of Mrs. Catherine B. Curtis of Drewry.

lection was at first very small, and a few shelves built by her husband were then sufficient. But as her interest grew, more shelves were needed. A. E. Liles, formerly an agricultural teacher at Middleburg High School, kindly rendered his services.

caretaker of some 50 parakeets. Even now we suspect there are many newcomers to this feathered flock since six pairs have recently laid. They live melodiously according to the Biblical injunction to increase and multiply and may very soon numerically equal the pitchers.

One day Mrs. Curtis went shopping in Norlina for a pair of shoes for her husband, and chose a pair that bore the imprint of the inspector's name, whose address Mrs. Curtis was able to find with a little time and effort. She then sent the inspector a letter.

She now has two floor-to-ceiling pitcher shelves, forming a right angle where two walls meet.

Among her pitchers, antiques and parakeets, Mrs. Curtis lives harmoniously with friends and relatives for whom she loves to cook, and although she is much too modest to admit it, reliable sources indicate that her cooking is "quite excellent and highly in demand."

Why? Because Mrs. Curtis is "always doing things like that." But it makes a lot of sense when you stop to think about it. After all, if you're going to stand firmly on somebody's name, you ought to know something about them.

Everyone who knows Mrs. Curtis, knows that gift giving is synonymous with pitchers, and as she has many friends and relatives, the pitchers keep pouring in.

The upshot of this is that Mrs. Curtis received a written response from the inspector, Mrs. Alvin Stokes of Michigan, who since this epistolary introduction has visited Mrs. Curtis twice and has given her a pitcher. And it is no ordinary pitcher because it symbolizes what most assuredly will be an eternal friendship.

Of the five alumni of the University of North Carolina at Chapel Hill, who will receive Distinguished Alumnus Awards at Chapel Hill on Oct. 12, University Day, one is a native of Warren County, Nathaniel Perkins Hayes son of the late Mr. and Mrs. Malvern H. Hayes of Wise. Hayes is chairman of the board of Carolina Steel Corporation of Greensboro.



HAYES

Mrs. Curtis now has more than 450 pitchers. Some of them have sentimental value, such as the one her son gave her with a corn-on-the-cob design, moulded in pink glass.

Other alumni who will receive the Distinguished Alumnus Award are Phillip Hettleman, a New York investment banker; Susie Marshall Sharp, chief justice of the North Carolina Supreme Court; William David Snider, vice president of The Greensboro Daily News; and Shepperd Strudwick, theatre, movie and television actor.

the corner stone of Old East Building. It will be celebrated with an 11 a. m. convocation in Memorial Hall with chancellor Ferebee Taylor presiding, Tom Lambert, chairman of the UNC-CH board of trustees, will be the featured speaker.

Others are valuable antiques. The pitcher her aunt's mother, who is 88 years old, received on her wedding day is now over 100 years old.

University Day observes the Oct. 12, 1793, laying of

Not the least valuable to Mrs. Curtis is that species of pitcher whose history is unknown. One such historical enigma is a pitcher, wash basin and cup set.

Mrs. Curtis' pitcher col-



Mrs. Catherine B. Curtis among her pitchers.

Hayes born in Warren County in 1901, earned two degrees from Carolina, his A. B. degree in 1921 and his B. S. in civil engineering in 1922. After working in Pittsburgh as an engineer, he returned to North Carolina in 1926 to join Carolina Steel Corporation in Greensboro. He was named president of the corporation in 1950 and chairman of the board in 1967.

Hayes is a trustee and member of the executive committee, Moses H. Cone Memorial Hospital in Greensboro in the Oak Ridge Foundation in Oak Ridge; and a trustee of Bennett College, Greensboro. He was the first southern president of American Institute of Steel Construction, Inc., in 1956-58. He also has been president, director or chairman of several organizations including the N. C. Chapter, American Society of Civil Engineers, Business Foundation of North Carolina, Inc., Piedmont Associated Industries, General Greene Council of the Boy Scouts of America and United Fund of Greensboro.

Ocean Crossers
Eighteen airlines now operate across the Atlantic.

Carolina Sportswear Plans Open House Here On Sunday

Carolina Sportswear will hold its third annual open house Sunday afternoon, October 9, from 1:30 to 5 p. m. John Andrews, plant manager, extended an invitation to every citizen of the county.

The local plant which manufactures knit shirts for men and boys has been operating in Warrenton since 1956.

The first operation was in the Boyd-Boyce Farm Machinery Building with seven employees. Audrey S. Paschall, one of the original employees, is still working at the plant.

The company, proving through the efforts of employees and management that it could be a prosperous business, began expanding. In May, 1958, ground was broken for a new facility containing 39,204 square feet.

On January 1, 1959, 83 employees moved into the newly constructed building. The first cutting department was included at this time.

With room to expand, new product lines were added and the company began making collar shirts.

By September, 1961 an addition of 9,680 square feet and over 300 employees were required.

The company continued to grow and by June, 1966, a second addition of 14,520 square feet was added. New offices were also constructed to house the engineering and personnel specialists.

Testing laboratories have been added and a new parking area for employees.

Carolina Sportswear now has 63,400 square feet and employs over 250 people, mostly women.

In addition to John Andrews, the plant manager, Joe Walker is the Sewing Department foreman; Thomas Salmon is the Finishing Department foreman; Melvin Reekes is Cutting Department foreman; and Audrey S. Paschall is Office Manager.

Line supervisors are Lynda Talbert, Peggy King, Grace F. Rudd, Lina L. Walker, Evelyn G. Paynter, Virginia G. Bolton and Shirley Hicks.

Bernard Williams is head mechanic, Barbara Walker is Personnel Supervisor and Pamela Moseley and Jean

Egerton are Training Supervisors.

Carolina Sportswear has come a long way since 1956. Many of the employees have remained loyal employees for up to 20 years.

Open House Sunday will include tours of the plant with explanations of the plant's operations.

Refreshments will be served. A photo display of pictures taken at the 1969 open house will be exhibited.

Attends Seminar

Miss Marina P. C. Moseley, Pharmacist at McDonald Army Hospital in Fort Eustis, Va., attended a three-day Hospital-Clinical Pharmacy Seminar at the Governors Inn, Research Triangle Park, Sept. 23-25.

Over 150 hospital and clinical pharmacists were in attendance to hear speakers throughout the United States and Canada review the broad responsibilities of pharmacists.

Miss Moseley is a Warrenton native and the sister of Mrs. James H. Bullock of Warrenton.

CROSSWORD PUZZLE

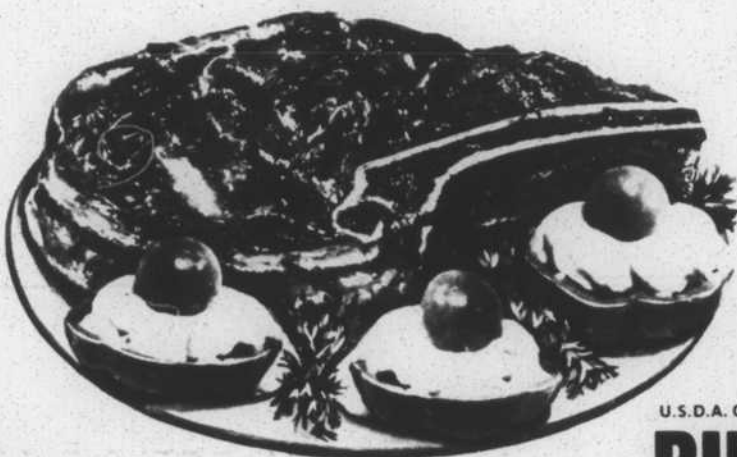
TODAY'S ANSWER

ACROSS
1 Summer fun spot
5 Vaulted
11 Hebrew lyre
12 Fly
13 Be merciful
14 Wild Asiatic horse
15 Joe College yell
16 Foundation
17 I love (Lat.)
18 Wind-flower
20 Collide with
21 Rave
22 Smooth consonant
23 Climb, with "up"
24 "— on My Hands"
25 Buddy
26 Ceylonese vessel
27 Play — with
28 Jeremiads
31 Eye
32 One (Fr.)
33 Fondness (Ir.)
33 Type style
35 "South America, Take It"
37 Reddish color

38 Florida county
39 Becharm
40 Coloring expert
DOWN
1 "Mr. Deeds" director
2 Any Chinese native
3 Flowing gown (2 wds.)
4 Snoop
5 Potentially active
6 Side-step
7 Ventilate
8 Biography by Hotchner
9 Cotton fabric
10 Signify
16 German city
19 Disable
22 Boundary
23 Clip
24 Heavy book
25 Elite
26 Terpsichorean
28 Verdi's "— Miller"
29 Do business
30 One quoted
35 Tall tale
36 Total

savings you can see

PRICES IN THIS AD GOOD THROUGH MIDNIGHT SUNDAY, OCTOBER 9



SAVE-WAY

U.S.D.A. CHOICE BEEF
RIB STEAK \$1.79
5" CUT..... LB.

SLICED - CENTER AND END CHOPS
1/4 PORK LOIN 9 To 11 Lb. Avg. \$1.09
LEAN
GROUND BEEF LB. 89¢

U.S.D.A. CHOICE
RIB ROAST LB. \$1.49
HOLLY FARMS
CHICKEN BACKS AND NECKS LB. 19¢
HOLLY FARMS
CHICKEN LEGS and BREAST QTRS. LB. 69¢

U.S.D.A. CHOICE
Del Monico Steaks LB. \$2.79
RICHFOOD SLICED
BACON LB. 99¢
JESSE JONES
SAUSAGE 12-OZ. PKG. 89¢ 24-OZ. PKG. \$1.79
CLAUSSEN
KOSHER DILL WHOLE SPEAR PICKLE QT. 99¢

RICHFOOD BEEF PATTIES LB. 89¢	FROZEN FRONT PIG FEET LB. 29¢	ARMOUR TURKEY DRUMSTICKS LB. 29¢	SMOKED PORK HOCKS LB. 49¢	ARMOUR TURKEY WING PORTION LB. 39¢	FRESH FROZEN WHOLE VEAL LIVERS 2 1/2 LB. - LB. 79¢	JESSE JONES BOLOGNA LB. 89¢	JESSE JONES FRANKS 12-OZ. 69¢
--	--	---	--	---	---	--	--

Enjoy
PEPSI-COLA or **Coca-Cola**
CTN. OF 8
YOUR CHOICE! 8 16 OZ. BOTS. 99¢

CRISCO SHORTENING
3 LB. CAN \$1.49
LIMIT (1) WITH 75¢ OR MORE FOOD ORDER

DANDEE BREAD
4 1-LB. LOAVES \$1.00

DANDEE
HOT DOG ROLLS 3 PKGS. \$1.00
HAMBURGER BUNS 3 PKGS. \$1.00
BROWN & SERVE ROLLS 3 PKGS. \$1.00

LUZIANNE RED LABEL OR R.T.
COFFEE 1 LB. BAG \$1.88
LIMIT (2)

DEL MONTE
CUT GREEN BEANS or **SLICED CARROTS** 3 16-OZ. CANS \$1.00

FRESH EVERYDAY
KRISPY KREME DONUTS DOZEN BOX 99¢

RICHFOOD GRAPEFRUIT JUICE 4-OZ. CAN 49¢

RICHFOOD
SALT 5 24-OZ. BOXES \$1.00

Dixie Classic Ice Milk
ALL FLAVORS
2 1/2-GALLON CARTONS \$1.00
LIMIT (2) PLEASE!

DAIRY Specials
RICHFOOD
BISCUITS 4 CANS 59¢
RICHFOOD
MARGARINE 4 1-LB. QTRS. \$1.00

DOMINO
SUGAR
5 77¢
LIMIT (1) WITH ADDITIONAL 75¢ OR MORE FOOD ORDER

TOMATO SOUP 5 1/2-OZ. CANS 95¢

FREEZER Specials
RICHFOOD FROZEN
ORANGE JUICE 12-OZ. 49¢
MORTON
POT PIES 8-OZ. 24¢
PET RITZ - 3 VARIETIES
GOBBLERS 24-OZ. 99¢
BANQUET - 3 VARIETIES

FRIGHTFULLY DELICIOUS TRICK OR TREATS FOR HALLOWEEN

PREMIUM CRACKERS 55¢

Buffet Suppers 33-OZ. 99¢

JELL-O GELATIN 5 3-OZ. BOXES \$1.00
PHILLIPS
PORK 'N BEANS 4 14-OZ. CANS \$1.00

HR PORTABLE 'STEAM' CARPET CLEANING SYSTEM
Clean carpets like professionals at a fraction of the cost!
SAVE-WAY

PRODUCE Specials
CRISP GREEN
CABBAGE LB. 12¢
CELERY 3 JUMBO STALKS \$1.00
TURNIP SALAD 3 LBS. \$1.00
NEW CROP CALIFORNIA WHITE SEEDLESS
GRAPES or TOKAY GRAPES LB. 59¢

EGGS 49¢
DOZEN IN CARTON

CHICKEN NOODLE
VEGETABLE or MUSHROOM SOUPS 4 10 1/2-OZ. CANS 95¢

ICE 10 LB. BAG 49¢
DELUXE DINNERS 10-OZ. BOTTLE 89¢
DUKE'S CORN OIL 20-OZ. BOTTLE 79¢
SUNSHINE VIENNA FINGERS 21-OZ. 99¢
SUNSHINE VANILLA WAFERS 12-OZ. 89¢
SABER'S MAYONNAISE 12-OZ. 89¢
RICHFOOD PEANUT BUTTER 12-OZ. 89¢

CRISPER PRESERVES 2 1/2 LB. JAR 89¢
CHOCOLATE CANDY 3 1/2 LB. BAG 79¢

WE ACCEPT FOOD STAMPS
WE ACCEPT W.I.C. COUPONS
QUANTITY RIGHTS RESERVED
OPEN 7 DAYS A WEEK 'TIL MIDNIGHT

VEGETABLE OIL 24-OZ. BOTTLE 89¢
FREEZE MIX 4-OZ. 33¢
BEST FRENCH OR THOUSAND ISLAND DRESSING 8-OZ. BOTTLE 49¢
HEinz
CATSUP 16-OZ. BOTTLE 49¢
HOT OR COLD WHOLE WHEAT 4-OZ. 33¢
PICKLE 12-OZ. 89¢
HOT OR COLD SWEET PICKLE 12-OZ. 89¢
PICKLE 12-OZ. 89¢
SHRIMP 12-OZ. 89¢
PORK AND BEANS 12-OZ. CAN 89¢

YES, AT SAVE-WAY WE STILL BAG and CARRY!
Plenty Free Parking Well Lighted Parking Lot

SAVE-WAY