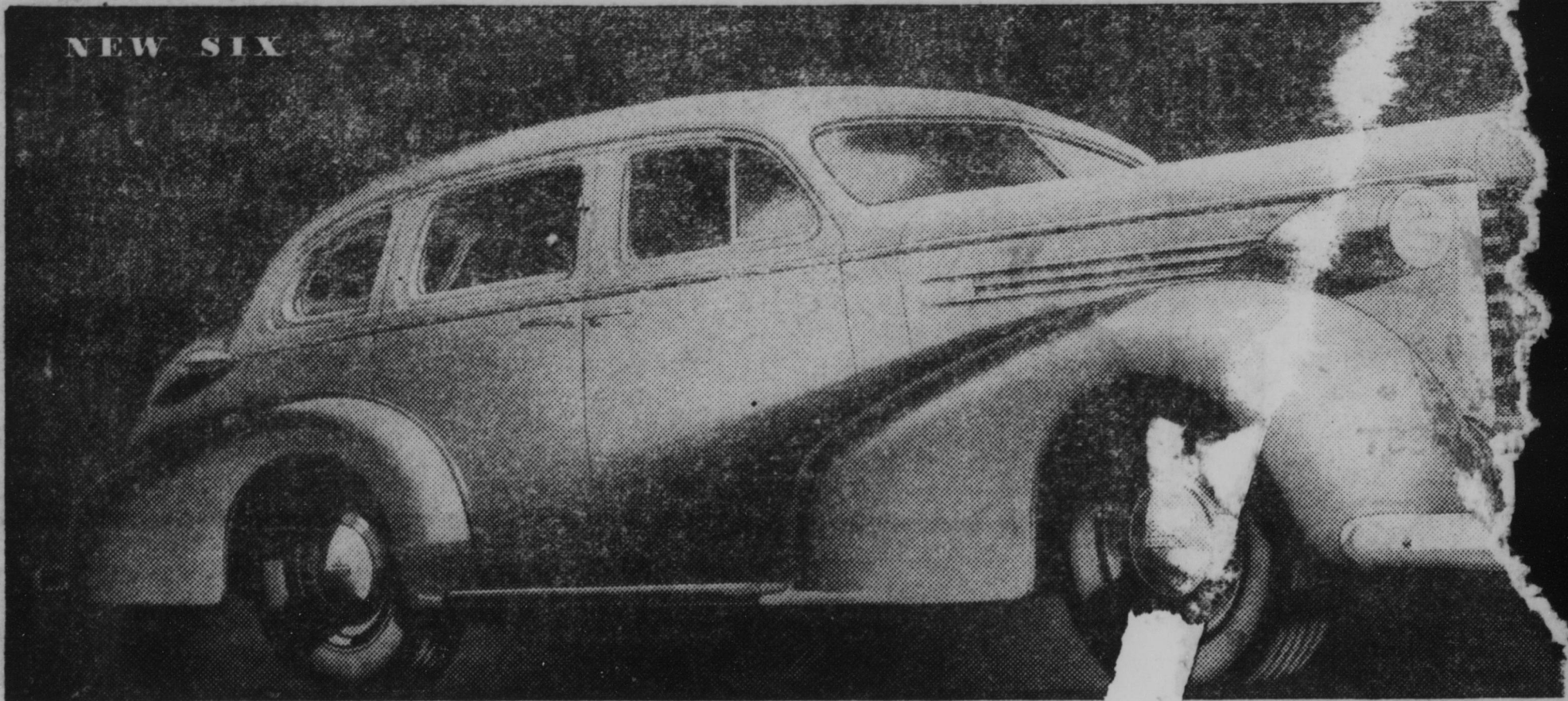
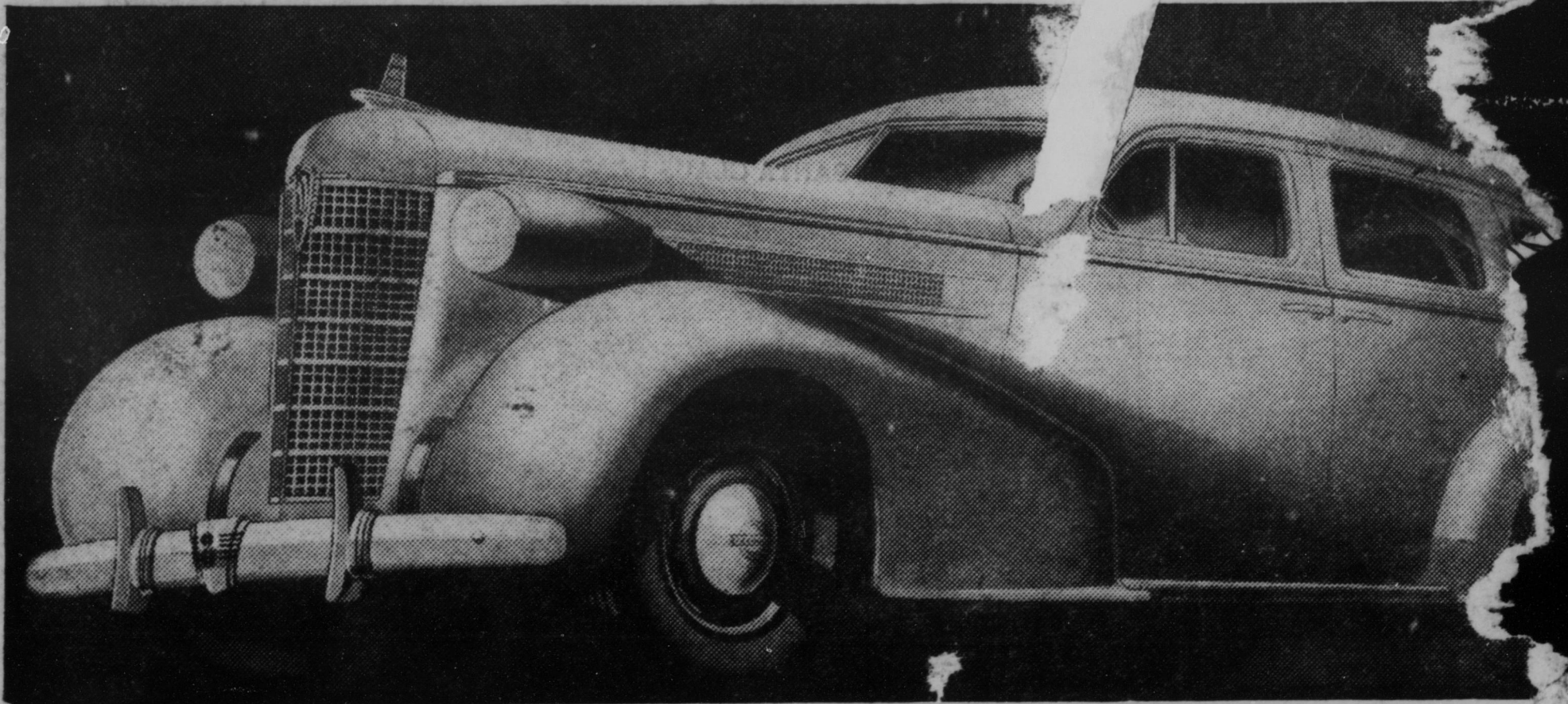


Announcing **2 GREAT NEW** **OLDSMOBILES** for 1937 *at Prices that Set the Pace in Value*

NEW SIX



BIGGER, FINER AND SAFER THAN EVER... EACH WITH A STYLE DISTINGUISHED BY



SIX
\$685*

PRICES REDUCED

on 4-Door Sedan & Touring Sedan

*Price \$685 and up, list at launch. Special
Accessory Groups Extra. Car Illustrated is the
Six-Cylinder 4-Door Touring Sedan, 1937
Est. & General Motors Value. Monthly
payments to suit your purse.
GENERAL MOTORS
INSTALLMENT PLAN

BOTH OFFERING: Fresh, New Style-Leader Styling • Longer Wheelbase
Larger Size • Roomier Bodies • Lower Floors • Wider Chassis • Heavier
Frames • Bigger Engines • Higher Power • Extra Safety • Greater Econ-
omy • And Oldsmobile's Traditionally Fine Quality.

BOTH FEATURING: New Unibody Bodies by Fisher with Turret Top • New
Triple Sealed Super-Hydraulic Brakes • Center-Control Steering
New Dual Ride Stabilizers • Proved Knee-Action Wheels • Unobstructed
Floors • and many other fine-car features.

THE CARS THAT HAVE EVERYTHING FOR 1937

J. M. CHEVROLET CO.
ZEBULON, NORTH CAROLINA