

'Tis and 'Taint on **SPRING STYLES**



By Alice L. Tildesley

Hollywood.

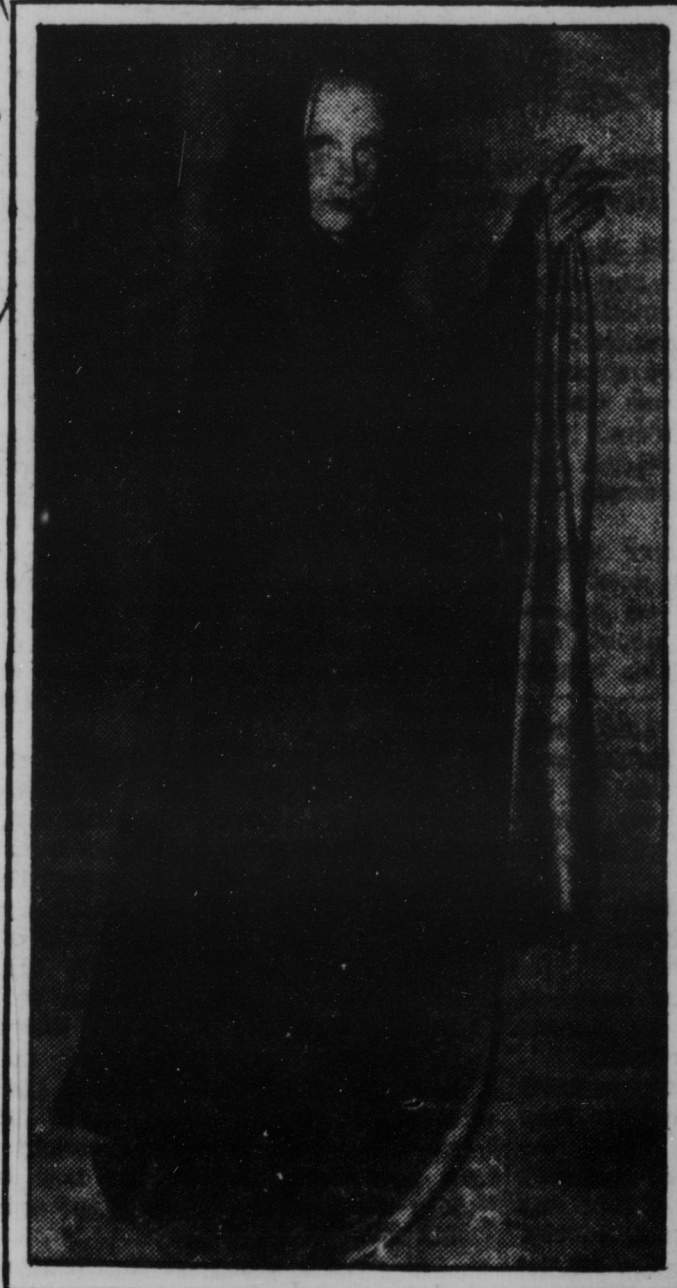
SPRING is here. And Easter is just around the corner. Clothes and Style are the uppermost subjects on every woman's mind. If you don't believe so, listen in when any two or more of them get together.

So, with Style the paramount issue for the moment, let's take a look at the movie capital of the world, where Style is influenced perhaps more than any other spot in the world, and see what the silver screen is going to flash before our eyes.

Edith Head, small and trim-figured, her dark hair in a Colleen Moore bob, insists that Paramount's young lovelies are going to be garbed very simply, like it or not.

"Our skirts are going to be fuller, except for suit skirts, and there you'll see the belt sometimes slightly below the top of the skirt, giving a high-waisted effect. The waistlines are all very slim, and the belts or girdles will be much, much wider. The tight basque tops won't be so good.

"Shoulders won't be so exaggerated as they have been, but they will still be fairly wide because that's so becoming to most women. We'll get the added width with an inverted pleat.



The long, hooded cape in light materials will be popular for Spring formal wear. A good example is shown by Marlene Dietrich

"The news for 1937, as I see it, is that we have stopped muddling up classifications. The girl who is going to play tennis will wear shorts and the girl who is merely going to watch will be garbed in actual spectator fashions.

"The clothes for sports will be simple, but spectator things will be more colorful; gayer, in line with our returned prosperity. People are in lighter spirits and they feel that color is appealing. Gall Patrick has a very attractive dress of red crepe made with bolero and pockets edged with brushed fringe. With this she wears red antelope hat, gloves and bag.

"A word about boleros: Don't be coaxed into wearing one unless your hips are very slim. A stout woman looks definitely tragic in one.



Virginia Bruce shows a picture gown of powder blue slipper satin. Note the full skirt and the fitted bodice and buttons from neck to waist

"Prints are gay this year, but we are combining plain colors with them—if we have a dress of print, it has a solid colored jacket; or if the dress is a solid color, the jacket is printed. Sometimes we take a printed figure from the printed silk, cut it out and applique it on the plain dress to tie it up with the printed coat.

"The coat of the print ensemble is often longer than those of last year, and it flares. There's lots of action in sports clothes."

Don't sacrifice what is becoming to you to what is supposed to be the style, is this expert's advice. Select the hat or gown or suit to flatter yourself, rather than to conform to fashion.