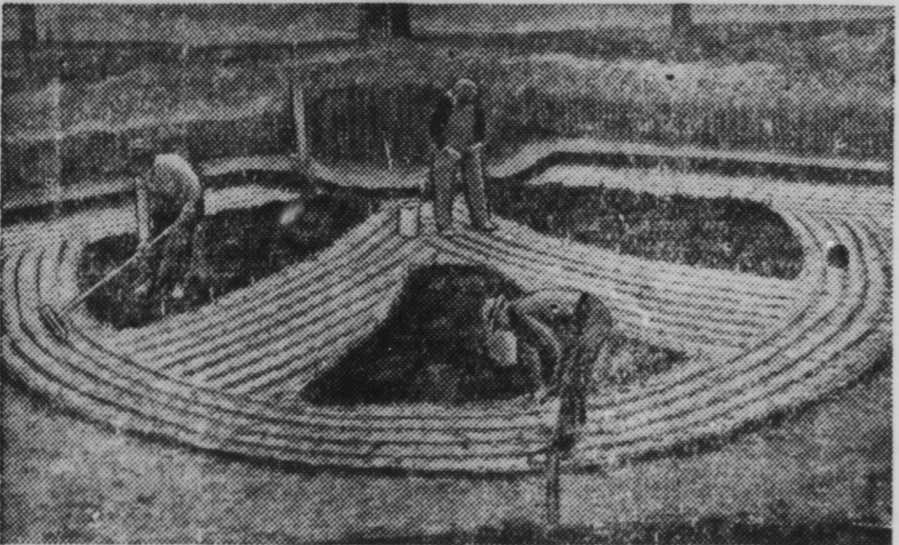
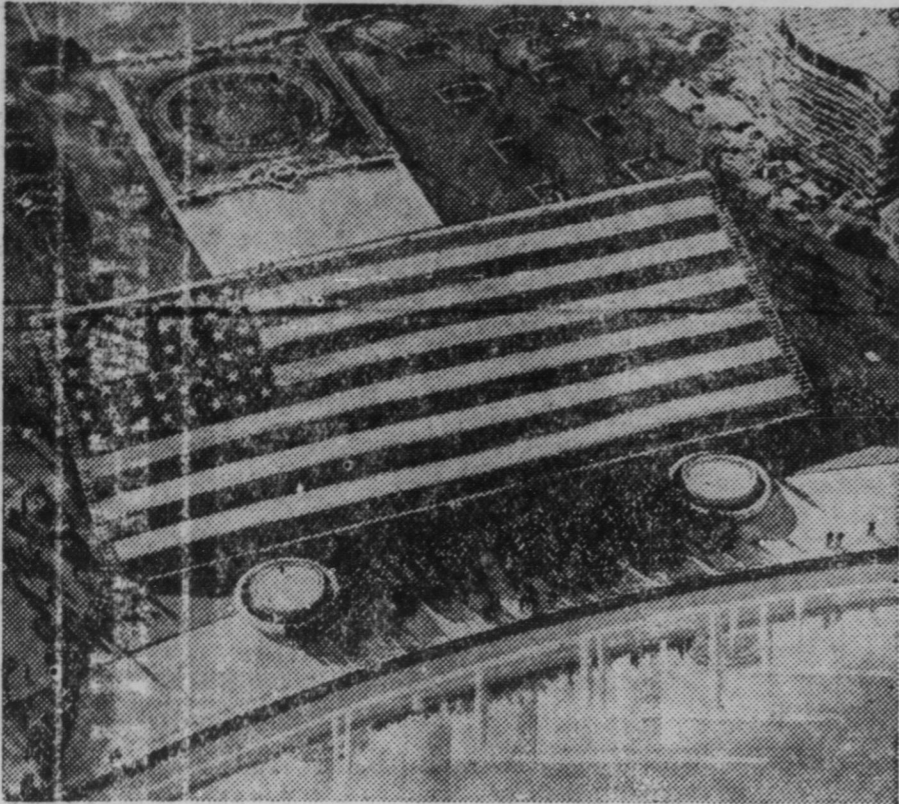


THE FAIR IN PICTURES



NEW YORK—With the opening date of the New York World's Fair 1939—April 30—coming nearer and nearer, activities on the Fair grounds are increasing daily. At the top you see a giant American Flag, 90 x 230 feet, being saluted by 1,000 school children in a ceremony marking the dedica-

tion of the Court of Peace, around which 62 nations are gathering their exhibits. In the middle appears a modern sculptural group called "Speed," featuring a woman astride a winged horse. At the bottom is one unit of tulip beds. More than 1,000,000 bulbs were imported from Holland to accentuate landscaping.

WAKELON NEWS

NEIL HARTLEY, Faculty Advisor

DRAMATIC CLUB

The Dramatic Club met last Thursday Feb. 2, in the auditorium of Wakelon School. Miss Anderson gave us some information on work she had been doing during the year. We asked her questions about her company and her work in college. Then some of the pupils acted out some songs and we guessed what they were. The club then adjourned to meet next club day.

Elsie Privette

FIRST YEAR FRENCH CLASS

The first year French class has been working on notebooks for the past two weeks. Monday was the day set for the notebooks to be handed in. Some of the books had attractive covers. A great number of covers had the picture of the Arc de Triomphe, map of France, and the emblem of France.

The contents included the map of France, an outline of France, newspaper clippings about France and lists of French words resembling English. Everybody enjoyed making the notebooks and learned

a lot, too.

Marie Pearce

HOME ECONOMICS CLUB

The last meeting of the Home Economics Club was held in Miss Palmer's room on February 2, 1939. The part that was enjoyed most by all was a play, "A Bachelor's Dilemma," given by Rosa Lee Bunn acting as the bachelor; the others were Mildred Mitchell, Alma Gray Pulley, Cleo Hicks, and Lib Eddins. The play was about a bachelor who first put up a sign wanting a housewife. Afer he had found himself a housewife, he changed the sign wanting a wife. The program was enjoyed by all.

Cora Mae W.

HOME EC BREAKFAST

The Home Economics class served breakfast Monday. The host was Mr. Moser and hostess was Mildred Mitchell. Guests were Sarah Kannon, Janie Pearce, Cleo Hicks, and Alma Pulley. Waitresses were Mary Elizabeth Eddins, Mildred Oakley, Lucille Pearce and Myra Gay. The menu was: orange

juice, cereal, eggs, toast, and bacon. The breakfast was enjoyed by all, especially the eighth grade. The main conversation was about the new building in which everyone is interested. We shall be glad to get in this new addition to our school.

Myra Gay.

SCOUT NEWS

Troop 40 of Zebulon is increasing rapidly in its upward progress. Marshall Keith, Fred and Allen Pippin, Wilbur Hales, and some more boys went to Raleigh for their Second Class badges.

Fred Pearce, Jack Liles, Oren Massey, Bill Bell and Wayne Privette went also to Raleigh for their First Class badges.

There are only two Star Scouts in the troop, Jack Gregory and Donald Massey.

There is not a single boy in the troop who is not a Tenderfoot. The boys that are Second Class Scouts are working for First Class.

James Monroe Jones.

Salmon To Ride Home

Naturalists tell us that when salmon are old enough to spawn they return to the stream in which they were hatched.

Out in Washington the building of the Grand Coulee Dam will cut off their home territory from the thousands of salmon that return to it each year, leaping up the falls to reach the desired spot. These fish are to be caught below the big dam and will be placed in tank cars and taken to streams that flow into the Columbia River below the dam. Federal and State Departments of Conservation are in charge of the work and arrangements are being made to keep the water in the tank cars at the proper temperature, to have the traps in place at the proper time and to have plenty of trained men ready for the work.

Since salmon make their trips upstream when four years old, it will take years to transplant those which will try to return to the 1,000 miles of streams cut off by the Grand Coulee Dam and which will kill themselves in their efforts unless taken in charge by "organized relief".

Man is like a tack—useful if he has a good head on him and is pointed in the right direction.

WANTED — CORN
in ear or shelled
TIPPETT'S DAIRY
One mile East of Zebulon
on highway 64

1tp

Announcement

We wish to express to the public our appreciation of the faithful service of Mr. J. R. Sawyer who for nine years was in our employ. We hope the people of Zebulon will give him the same support as proprietor of the City Market that they gave us.

STEDMAN STORES CO.

YOUR PATRONAGE IS SOLICITED BY THE

City Market

ZEBULON'S FOOD CENTER

J. R. ("Bob") Sawyer, Proprietor.

REMEMBER

We are Without Tobacco Control, but may still Control the QUALITY of Our CROPS

by Using

Royster's Premium Quality Fertilizers

Only Royster's Carries a Guarantee of SIX Essential Ingredients

3 Primary — 3 Secondary — All Necessary Use Our Bulletin Board Service — Free!

Wakelon Trading Co.

FOSTER D. FINCH