

This, That, & the Other

By MRS. THEO. B. DAVIS

From Mrs. Roosevelt's "My Day": "You have no idea how ingenious you can be when you are shopping for things you want and they are not forthcoming. . . . If you can't find a ready-made cover for the ironing board, you can buy cotton flannel and sheeting and make it."

Quite true. Or, if you happen not to have the money for shopping, you can take a badly worn bed spread or an old blanket and a clean feed sack and make the ironing-board cover.

You might be surprised, yourself, Mrs. Roosevelt.

My grandsons are owners of a horned toad sent from Texas by their other grandmother. She sent two toads but one tunneled out from under the box they were in and may be roaming around Raleigh yet. If so, anyone seeing it may think he is looking at a baby dragon. Horned toads really belong to the lizard family, I am told.

The trouble about this one is his food. He will not eat anything that is not moving when he catches it. The boys complain that it is so hard merely to stun flies so that they will still walk when offered to the toad. Last Thursday they said "Tex" had eaten only eight or ten flies in five days. "Mother will kill 'em too dead," Eric lamented.

My daughter says the toad sits for hours in his pan of water, swelling out like a sponge. If the water is taken away, he shrinks and shrivels as he dries out. She also claims he will turn his head one-sided, stare at her for a while and then give her a wicked wink. Horned toads are interesting pets but they have their limitations.

One of the most amusing things I've known of recently was the way the old Newfoundland dog at the Clifton Pippin home acted during the final rush of rehearsal, decorating, and otherwise dashing round getting everything ready for Mary Grey to marry her Elmo in the properly romantic setting.

When I went up Thursday afternoon to begin work on the yard where Clifton had already fixed the background so firmly that even the storm on Friday didn't flutter it, the old dog was out in the front yard. When I went back that night for the rehearsal of the occasional dog had gone back as far as the driveway in front of the porch. Next morning he was hidden in the shrubbery that surrounds the porch; but by ten o'clock he had gone farther back and had lain down at the side of the house, near the pool. Just before noon I saw him walk sadly to the steps at the back porch and lie down.

Late in the afternoon I saw the old dog midway the back yard. And when I took the remnants of unused flowers from the front yard to discard them, last thing before coming home for supper that worried beast had gone to the garage door from which place he lifted a grizzled head to look despairingly at me. I tried to say a few words of comfort and cheer, but he lowered his head in disgusted resignation and closed his eyes.

I'd wager that by the time the wedding and reception were over that dog was 'way down in the pasture.

The ways of humans must seem strange past understanding to what we call the lower animals.

TIME TO SEED LAWNS

Except for the mountain section, the best results are usually secured by seeding grass in the early fall. John H. Harris, extension landscape specialist of N. C. State College, says even in the mountains, at elevations of less than 2,500 feet, the best time to seed a lawn is in the early fall. By seeding in the fall, the grass will generally become well established before winter, and in the spring will have a good start on

75 Wake County Residents Have Licenses Taken

Camden County Has No License Revocation In Half Year

Seventy-five Wake county motorists had their drivers' licenses revoked during the first six months of this year, the highway safety division reported this week.

The 75 revocations in this county were a part of the record 3,866 made in the state. Total revocations since passage of the Uniform Drivers' License Act in 1935 now number 35,524. For the first six months in 1940, 112 licenses were revoked in Wake county.

Drunken driving, of course, was the chief basis for the revocations, 3,115 being for this cause. Another 233 Tar Heel drivers lost their driving privilege because of convictions for "driving under the influence" in other states.

Guilford county led the state in revocations the first half of this year. Only one small county, Camden, reported no license revocations the first six months of 1941.

So far this year there is an increase of 40 per cent above the same period last year.

Watts to Be Here

Rev. L. W. Watts, chaplain at the State Prison in Raleigh, will teach the Alford Bible class of the Zebulon Baptist church next Sunday morning. The Baraca class will be guests of the Bible class at that time.

Mr. Watts spoke week before last to the Zebulon Junior Chamber of Commerce, and his message, which concerned prison recreation and regeneration, was well received. The public is invited to hear him next Sunday.

Anglers, Anglers

One of the sea's rarest and odddest fish is the deep-sea angler. The largest males are 1 to 2 inches long; the largest females, about 3 feet. Displaying a monogamous tendency almost incredible, the male attaches himself by a little fringe of flesh to his mate's body and proceeds to grow there, becoming entirely parasitic. The female has a mouth almost a foot wide, over which dangles a long growth with a beautiful, tassellike affair at the end. This natural fish lure has a light in its tip. Furthermore, to make it doubly attractive. Quietly confident that things will come her way, the female just lies on the sea floor with her mouth open, dangling her luminescent lure. As the smaller fish swim toward the lure, she swishes it out of the way, and that's that. The female is fed directly; the male, through his now tightly grown alimentary canal, being fed indirectly.

Bond Queries

Q. What is a U. S. Defense Savings Bond?

A. This bond is proof that you have loaned money to the United States government for national defense. Your bond bears interest at the rate of 2.9 per cent a year, if held to maturity (ten years).

Q. Why should I buy Defense Bonds?

A. Because money talks: To dictators it speaks defiance. To friends of freedom, it says, "Here's my hand!"

NOTE: To purchase Defense Bonds and Stamps, go to the nearest post office or bank, or write for information to the Treasurer of the United States.

Names Mixed

It has been announced that names of registrants who were enrolled July 1 will be mixed with those of earlier date. This was decided to be preferable to making different groups. A national draft lottery will be held in Washington late this month to determine sequence numbers.



Pictured is John W. Sumner, new resident manager of The Carolina Power and Light Company. Mr. Sumner comes to Zebulon with a reputation as a trouble shooter.

Selected Men Are Given Here

List of selected men to be inducted into the U. S. army July 15, 1941 (colored):

V 102-A Alston Williams, Route 2, Wake Forest, N. C.; 120 Luma Edward Harris, Zebulon, N. C.; 182 William Henry Lunsford, Route 1, Raleigh, N. C.; 322 Mack Amos Brock, Zebulon, N. C.; 327 James Henry Wright, Route 1, Wendell, N. C.; 340 Landon Lee Dunston, Method, N. C.; 415 Purvis Pretty, Zebulon, N. C.; 450 Henry Oberby, Route 2, Wake Forest, N. C.; 476 Moses Bledsoe, Route 1, Raleigh, N. C.; 496 Carol Lonie Harris, Method, N. C.; 516 Robert Merritt, Route 5 Raleigh, N. C.; 529 Esque Jones, Route 2, Wake Forest, N. C.; 553 Robert Jeffreys, Route 3, Zebulon, N. C.; 568 John Lee Smith, Knightsdale, N. C.; 572 Alfred Lesley Rogers, Knightsdale, N. C.

N. C. Coal Mine Reopens In June

Plans are underway for the resumption of coal mining at the mouth of the mine of the former Carolina Coal Company, at Coal Glen, in Chatham County, about eight miles north of Sanford.

Coal Products, Inc., of Sanford, recently chartered by the Secretary of State with Southern Pine interests, including H. B. Chatfield and H. N. Butler as incorporators, have acquired property in the Deep River coal fields, and plan to begin work in the near future.

The company has engaged the firm of Robinson and Robinson, mining engineers of Charleston, W. Va., to take charge of the enterprise.

It is understood that electric power will be used in hoisting coal out of the mine, instead of the former methods of using a steam hoist, chain belt, and conveyors. Another improvement will be the cleaning of coal by machines in the mines and at the tipple before loading, instead of by former methods by hand.

The company will install modern machinery, with the latest safety devices to overcome the hazards of dust and gas. Local labor will be employed, and the company hopes to reach an output of several hundred tons a day.

The mine of the Carolina Coal

Carolina Power Builds New Line For Defense Aid

110 KiloV Transmission Line to Run to Harnett

The first of the five high tension lines the Carolina Power and Light Company is building in its program of expansion so as to render further aid in the national defense plans is nearing completion and is expected to be placed into service not later than July 6, L. V. Sutton, president and general manager, announced today.

This new line extends from the company's 110 KV substation between Dunn and Erwin to its Cape Fear steam electric generating plant in Chatham county, where the capacity of the plant is being increased from 44,000 to 124,000 horsepower.

Not only will the new 110 KV line relieve other high-powered lines of the company, but will also provide more capacity for Fort Bragg, Raleigh, and other sections in the Raleigh load area, it was said. It will also provide an additional safeguard against failures on other 110 KV lines in event of trouble on the lines bringing power from the company's hydroelectric plants at Blewett and Tillery.

Mr. Sutton said work is progressing satisfactorily at the Cape Fear plant and that every effort is being made to install the two new generating units as soon as possible.

Extending for a distance of 28 3/4 miles, the Dunn-Cape Fear line has a total of 229 structures. Each of the poles, which average between 50 and 55 feet, is of native timber heavily creosoted, as there is an average of about eight pounds of creosote to each cubic foot.

Work is also progressing satisfactorily, it was said, on the Selma-Goldsboro-Wilson 110 KV line, and also on the Florence to Greeleyville, the Hartsville to Chesterfield, and the Cheraw to Chesterfield lines in South Carolina.

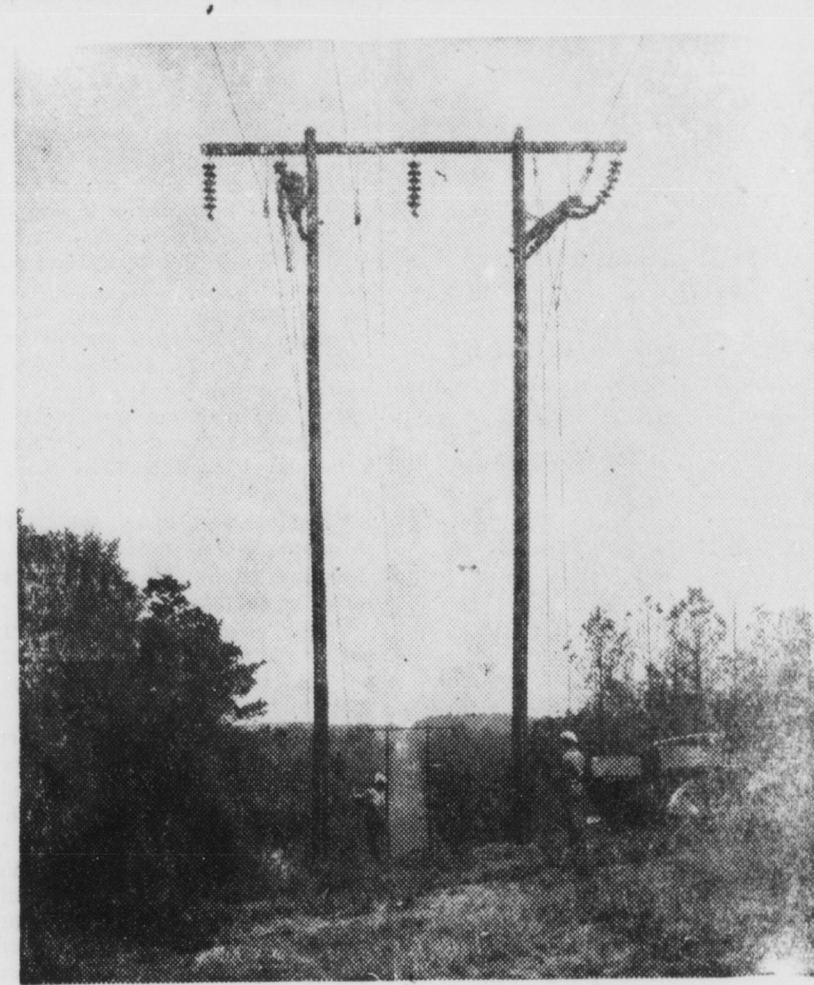
Heavy Rains Fall In East Carolina

Continued rain in this section has kept the ground wet and gives grass time to make much headway before it can be uprooted from crops. But other communities have had much worse to contend with. On last Saturday Kenly, Goldsboro, and adjacent neighborhoods had a veritable cloudburst. Rain fell to the depth of a little more than three and six-tenths inches. Driving through it, was practically impossible. Windshield wipers could do little but "stir up" the quantity of water thrown on the glass and sight was too much dimmed for safety even could the road ahead have been visible.

Raleigh reported heavy rain on Sunday also.

Company has not been operated in eight or ten years. The company was placed in receivership several years ago, and at the receiver's sale the property was purchased by the late ex-Senator N. B. Dial of South Carolina for the bondholders.

Rotary Club to Meet Junior Chamber of Commerce Next Wednesday In Softball Bout



Shown above is part of the new 110,000 volt line the Carolina Power and Light Company is building from its substation between Dunn and Erwin to the Cape Fear steam generating plant in Chatham county. The line, one of five the company is building in North and South Carolina, is part of the company's program of expansion to aid in the national defense program.

Game Will Be For the Benefit of Scout Hut

Two Ministers Expected to Star in Big Game

By FERD DAVIS

Zebulon matrons and children will have an opportunity to see just what wonderful athletes their husbands and fathers really are when the Zebulon Junior Chamber of Commerce meets the Rotary Club at 3:30 p. m. on the Wake-High School diamond on Wed., July 16.

The purpose of the softball game—at which no one person in Zebulon can be said to excel—is to raise money for the Boy Scout hut being built next to the water plant. The troop needs a little more money for the enterprise, and Scoutmaster Allen expects the softball game to raise the necessary funds.

Admission to the game will be ten cents at the gate, but Leon Thompson has devised an ingenious method of saving money for the fans: he has had coupons printed which will admit a fan with payment of only a dime. These valuable coupons will be distributed absolutely free.

Leaders on the Rotary Club team are expected to be Bob Sawyer and Robert Massey, both members of the Jaycees also. However, "You'll have to let us play with the Rotary Club team, fellows," one of them plead at the last Jaycee meeting. "Those fellows are so decrepit."

The Rev. George Griffin is expected to star for the Jaycees, along with Robert Ed Horton and Ed Hales. "We expect to spot the Rotarians at least twelve runs, if we play a nine inning game," Robert Ed said.

"We'll get twelve runs, all right," a Rotarian countered, "but nobody will have to spot us anything. We'll bat the Jaycees right out of the park in the first inning."

Considering the prowess of the two teams, there is some doubt in various quarters that anybody will bat anybody else right out of the park in any inning. It cannot be denied, however, that neither team has a pitcher worth a cuss.

Dunn and Bradstreet in listing good investments for July carried this softball game at the top of the list. "The investment of the tenth part of a dollar in this game," their official bulletin stated, "will bring the greatest dividends both to customer and promoter"—not to mention the worthiness of the cause.

Besides, it isn't every day that one can see such a remarkable conglomeration of players. I myself will play left field for the Jaycees, and I can say without blushing that I will be the best leftfielder in the game with the exception of Hoyle Bridges who plays left field for the Rotarians.

Robert Ed Horton will pitch for the Jaycees, and is expected to go the distance. He is practicing throwing rocks at highway signs every day, and is taking a special 10-day Charles Atlas course in developing the forearm.

Banker Brown is the Rotary Club's hurler, and vows he will pitch the entire game. He is left-handed, but is expected to pitch the last three innings with his right arm. He denied that he has purchased a case of Sloan's liniment for use after the game.

The Rev. Charles Allen will play short center field for the Rotarians. He would have played outfield, but doubt was expressed that he could make it from the outfield to home plate for nine innings. The game was cut to

Continued on Page Two

CHURCH NOTES

Baptist Church

Services for Sunday, July 13: 9:45 Sunday school. 11:00 Morning worship. Sermon topic: "Christ Crucified." The Lord's supper will be observed at this service. 6:45 Meeting of Young people. Vesper Services.

7:15 Instead of the eight o'clock worship service we are to have a vesper service on the lawn just north of the church. The hour is seven-fifteen. In case of rain we will meet in the church. All are invited to these vespers which will be held during the remaining Sundays in July.

Sr. Fidelis Class Meets on Monday

The Senior Fidelis Class of the Baptist S. S. met on Monday night in the home of Mrs. W. S. Cheeves with Mesdames G. K. Corbett and M. E. Carter associate hostesses. Mrs. Avon Privette led the devotional and Mrs. Willard Gill presided over the business session. Pollyannas for the past three months were revealed and new names were drawn.

During the social hour the hostesses served an iced drink with potato chips and decorated cakes.

Methodists

Services for Sunday, July 13: Church school—10:00. Church service—11:00. Topic: "Windows We See Through."

Young people—7:00. We shall be very happy to have Miss Grace Coltrane of New York City to be our soloist at the morning service.

Hopkins Chapel

The W. M. S. of Hopkins Chapel church will meet at the home of Mrs. S. A. Bunn Saturday, July 19. All members are urged to be present.

Mrs. J. G. Bunn

Hales Chapel

Revival services are in progress at Hales Chapel this week, Pastor H. G. Upchurch being assisted by Rev. Otha Hilliard of Marners.

Service hours are 2:30 and 8:00 p. m.

Pearce Church

Pastor Paul Childers announces the beginning of revival services at Pearce church near Zebulon on July 13. The meeting will continue through July 19 with Rev. J. Clyde Yates of Kannapolis assisting. The hour is 7:45 p. m.

The public is invited.

Ferrell's Wins

Dallas Brantley pitched victory for Ferrell's to defeat Bull Head 12 to 11 in a 14-inning game played on the loser ground. Woodrow Driver hit a home run for Ferrell's.

Alvin Brantley

July - August Garden Work Calendar Given

There's much work to be done on the fall garden, and in the home orchard, during July and August.

For farmers in the eastern part of the state, the horticulturists recommend that a second crop of potatoes be planted in July. Good varieties are Lookout Mountain and Candler. Also suggested is the setting out of cabbage plants from August 1 to 10. Plant sweet corn, lima beans, summer spinach, Swiss chard and tomatoes between July

15 and August 15. Sow celery seed in July for plants to be set out in August. Sow turnip seed, and turnip salad, in August.

For the western half of the state, the horticulturists recommend: Sow celery seed in July for transplanting in August. Sow seed of Chinese cabbage in July and lettuce seed in August. Thin plants of each to 12 inches apart. Plant snap beans, beets, carrots, collards, sweet corn, Swiss chard, tomatoes, kale, turnips and turnip salad in July or August. Plant a second

crop of Irish potatoes in July.

Suggested work in the home orchard during the July-August period is as follows: Remove old fruiting canes of raspberries, dewberries and blackberries. Burn them. If the leafspot disease is present, spray the new canes with Bordeaux mixture.

Spray peach trees with wet sulphur to control brown rot. Spray apple trees with Bordeaux mixture to control the rot diseases. Spray grapevines with the same material to prevent fruit from rotting.