

THE ZEBULON RECORD

Volume XXV. Number 47.

Zebulon, N. C., Tuesday, August 15, 1950

Theo. Davis Sons, Publishers

IN OUR TOWN...



In our town most of the young people like to dance. Most of them can dance in their own homes, but they never get a chance at a high school senior prom . . . or any other formal dance. They would take advantage of any opportunity given them—witness the nice crowds which attended the square dances each Friday night this summer at the high school gymnasium. Of course the big problem is the place to hold such affairs . . . that is a problem for Zebulon to solve and soon, too.



CAPITAL REPORTER

Scott Summers

One concrete result of the visit to Washington by Governor Scott and members of his staff: Two days after their return, Highway Commission Chairman Henry Jordan was approached by a man who offered delivery of a boatload of cement to a North Carolina port to be used as a stockpile in the event the cement supply becomes more critical.

Purchase will be made in a move to protect the roadbuilding program against a complete shut-off of cement supplies from other sources. It also will assure completion of State buildings already under construction.

Rural women are getting more representation by the State. Example: Mrs. E. J. Lassiter, who lives on RFD 1, Erwin, in Harnett County, recently was appointed to the State Hospital Board of Controls. When Governor Scott tried to reach her by telephone to tell her of the appointment, he found out that his phone-adding program hadn't reached Mrs. Lassiter's bailiwick yet. The governor had to call her daughter in Dunn

to relay the message and have Mrs. Lassiter travel to the nearest phone to call him and confirm the appointment. Maybe the appointment will at least enable her to get a telephone installed.

Young, handsome, energetic Governor Sid McMath of Arkansas will be the speaker when the Young Democrats meet September 15-16 in Asheville. McMath, 38, is a former national YDC president, and incidentally just got himself reelected to Arkansas' number one job last week.

Speaking of fights, watch for the 1951 House speakership race to be one of the most closely contested in the history of the house. Friends of Anti-Administration Frank Taylor of Wayne and Sometimes - Scott - Supporter Fred Royster of Vance both are claiming substantial leads for their boys. But unbiased viewers of the scene see it pretty close, with numerous legislators pledged to neither. Look for a battle to the finish. And whichever wins, it's a sure thing the loser will not get any important committee appointments.

EXTENSION SERVICE

Farming Questions

How can I get rid of ants? Strange as it may seem, one insecticide will not work against all kinds of ants. For some species of ants, a 5 per cent DDT dust is effective. For others, a 2 per cent chlordane dust has proved better. If you are bothered with ants in the house, your best bet is to use a 5 per cent DDT household fly spray and apply it to the cracks, crevices and around doors and window sills where the pest are appearing.

How can I keep my cows from bloating?

Bloat has probably been a serious problem with livestock since the beginning of time. Yet the specialists are still not sure about

what causes bloat. However, they do list certain precautions which have been proven effective in reducing bloat. The first is to feed your animals some hay or silage before turning them on lush green pasture. Second, watch them closely for the first hour or two after they are on pasture. And third, be especially careful after rainy weather when the pasture plants are full of moisture.

When is it safe to stop treating cotton for boll weevil control?

Keep up the treatment at least until your field has more bolls than squares. You should treat your fields every five days until the majority of the bolls have formed.

Specialist Proves Improved Pasture Pays Big Profits

Improved pasture is the most economical livestock feed and should be the main source of feed wherever weather conditions permit, says W. W. McPherson, agricultural economist with the North Carolina Experiment Station, who points out the profitable farming operations of Joe Tippett, Zebulon farmer.

McPherson list two main types of land where pastures may be planted to supply inexpensive feed for livestock. The first type mentioned is idle land. Many farms, he says, contain small acreages of such land. The State has over 900,000 acres in this category.

The cost of establishing pasture may be distributed over five years since the average permanent pasture produces that long. One-fifth the cost of establishing pasture on cleared land plus the annual maintenance cost amounts to about \$20 per acre per year. Hence, if pasture is developed on idle land, any income over \$20 per acre is an addition to the farmer's return for his labor and investment.

The other sources of pasture land listed is shifting acreages from alternative uses to improved pastures. Under this system, pastures must compete with other feed crops and with cash crops.

Cash Competition

As shown on the chart, pasture competes very favorably with other feed crops because of the saving on harvesting and feeding costs. With corn, the most common livestock feed, it cost \$1.77 to produce 100 pounds of total digestible nutrients, assuming a corn yield of 50 bushels per acre. With pasture the cost is only 58 cents.

The question of whether pasture will compete with cash crops for land acreage depends on individual circumstances. In many cases, especially on small farms or large farms where enough labor is available, pasture cannot "out compete" allotted acreages of cash crops.

However, this may not always be true, says McPherson.

Last Rites Are Held For Mrs. Chris Brantley

Mrs. Ardella Hood Brantley, 81, died Friday afternoon in Charlotte at the home of her daughter, Mrs. L. W. Rogers, following a short illness.

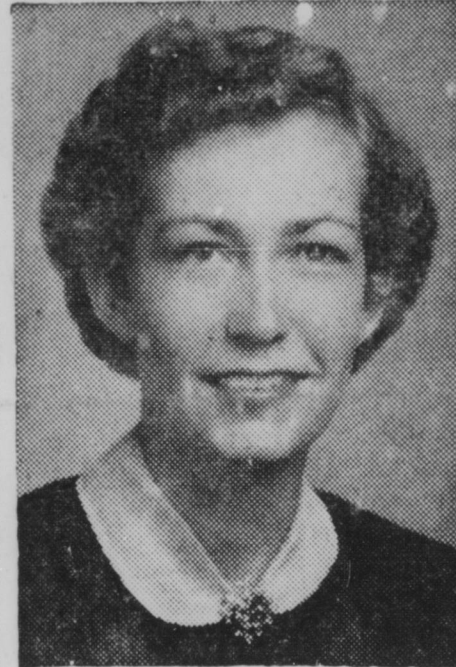
Funeral services were held Sunday afternoon at 3 o'clock, conducted by the Rev. Kermit Combs, pastor, assisted by the Rev. T. B. Davis. Burial was in the Zebulon Cemetery.

Surviving are three daughters, Mrs. L. W. Rogers of Charlotte, Jesse Brantley of Washington, D. C., Mrs. M. H. Brantley of Spring Hope; five sons, Sherwood of Raleigh, Linwood of Neuse, Odell and Lenton of the home, and G. B. Brantley of Fayetteville; one sister, Mrs. Lacy Patillo of Florence, S. C.; 17 grand children; and ten great-grandchildren.

Dr. Ellis Here

Dr. Hugh Ellis of Miami, Florida, father of Mrs. Kermit Combs of Wakefield, preached at the Sunday morning worship services at the Zebulon Baptist Church in the absence of the pastor.

CP&L WORKER



Miss Rosa Lee Armstrong, native of Salisbury, has been appointed Home Service Representative of the Carolina Power & Light Company for this district, it was announced this week by Mrs. Marguerite Surles, CP&L Home Service Director. Miss Armstrong will assist CP&L customers in the economical use of appliances. She is a former school teacher, and was superintendent of school lunchrooms with the Department of Public Instruction in Raleigh just prior to her employment by the power company.

Poisonous Plants Kill Carolina Cows

Poisonous plants may have been responsible for some of the recent cattle losses in North Carolina, pasture and livestock specialists at State College revealed this week.

On at least one eastern Carolina farm where several cattle had been lost, Sam Dobson, extension pastures specialist, found wild cherry bushes that "had been grazed as high as the animals could reach." Wild cherry is known to be poisonous, says Dobson, especially the wilted leaves. While there was no positive evidence that these animals died from poisoning, the circumstances pointed to that conclusion.

"Animals with certain deficiencies develop a depraved or abnormal appetite," says J. Clark Osborne, veterinarian with the Experiment Station. "Such animals may chew on objects and eat plants which they normally would refuse."

Of the thousands of plants found in the State, only about 50 or 60 are considered poisonous to livestock. About ten of these are responsible for most of the losses. They are: white snakeroot, lamb-
(Continued on Page 8)

RUTH CURRENT:

Farm Home Hints

EASE UP ON SUMMER IRONING: Be stingy with the water. At least, you can keep yourself from doing extra ironing by doing a good job of sprinkling. Over dampening is a common fault. Use warm water, distribute it evenly. Fold the sprinkled clothes loosely and with as few wrinkles as possible. Putting the sprinkled clothes in a plastic bag helps. You have an old plastic tablecloth that has a small hole or two in it; you might use that to wrap around the clothes.

Set up your "assembly line." Place your basket of sprinkled clothes on one side of the ironing board, a rack, clothes hangers, or

Danger from Fire From Fuel Cited By County Agent

More tractor and truck fuel is used during the summer on farms than at any other season. Bruce Butler, Assistant Wake County Farm Agent with the State College Extension Service, points out that petroleum products can be a servant or destroyer. It all depends on how they are used.

Careless use of motor fuels or other flammable liquids leads to tragedy. The victims die prematurely and horribly. They ignored repeated warnings and waited until it was too late to change their habits.

If you want to avoid disaster here are some important rules recommended by the National Safety Council.

1. An underground tank with a pump similar to the equipment used in service stations provides the safest storage for large supplies of farm tractor fuels, gasoline or kerosene on farms.

2. The next best method of storing gasoline supplies is in a well constructed steel tank located at least forty feet or more from farm buildings or from combustible material. If a separate enclosure is used it should permit vapors to escape in case of a leak or spill.

Red Gasoline Container

3. When necessary to bring gasoline inside, a red, labeled container of an approved safety type and not more than one gallon capacity should be used. Kerosene for immediate use may be kept in a small safety type container that is labeled and different in size, shape and color from gasoline containers.

Never re-fuel a tractor while the motor is running or extremely hot. Check fuel lines frequently to avoid leaky connections.

5. The use of open containers or careless spilling of flammable liquids invites trouble. A dangerous feature of gasoline storage in elevated tanks is the hazard of gravity flow, defective hose or the absence of self-closing valves and lock.

School Opening

Wakelon School will reopen on Thursday, September 7, for the 1950-51 school year, County Supt. Randolph Benton has announced.

Principal W. R. Whittenton has completed the Wakelon faculty with one exception and expects to fill that vacancy this week. Other local faculties are completed.

(Continued on Page 8)