



SUN VALLEY  
**OLEO** 2 lb. 29c



VALLEY BROOK  
**BACON** 39c lb.

Obviously, the BEST way to cut food bills is in the TOTAL cost of your ENTIRE food order. What good are a few mis-leading "leaders" that you may not want — or even like — if the end result is a total cost higher than it should be? The sure way to enjoy the better meals your family likes and get the SAVINGS you need is to shop at Parrish Super Market where ALL prices are LOW — ALL THE TIME! You don't have to cut corners to give thrift a lift — all you'll be cutting are those food bills . . . right down to budget size.

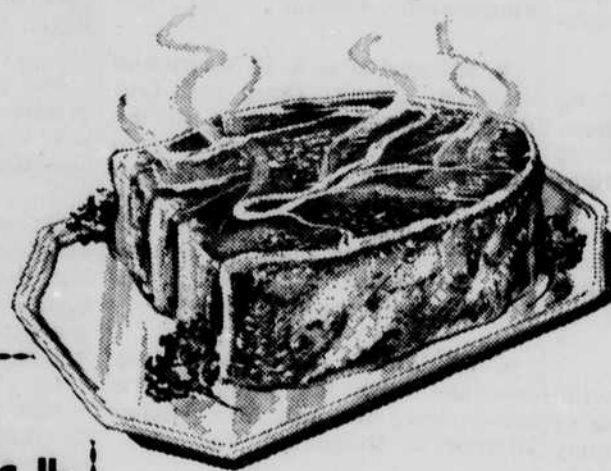
**GROUND BEEF**  
39c lb. or 3 lb. 1.00

**RIB STEAK** Armour Star or US Good 79c lb.

**RIB STEW** 29c lb.

**CUBE STEAK** 69c lb.

**BONELESS RIB** \$1.09 lb.



**CHUCK ROAST**  
39c lb.

Pork 7 Lbs. End Cuts  
**NECK BONES** \$1.00 **PORK CHOPS** 45c lb.

**FS GOLD STAMPS**

**FS GOLD STAMPS**

WE OFFER DOUBLE  
FS GOLD STAMPS  
TUESDAY, APRIL 23

**FS GOLD STAMPS**

**FS GOLD STAMPS**

**WISK** 69c quart

Dukes Qt.  
**CORN OIL** 49c

Chef-Boy-Ar-Dee 15 Oz. Can  
**Meat Balls & Spaghetti**  
2 for 39c

Texas Pete 10½ Oz. Can  
**Hot Dog Chili**  
2 for 29c

All Flavors Family Size  
**JELLO**  
2 for 35c

Gold Medal 7 oz. Pkg.  
**Macaroni & Spaghetti**  
10c

Del Monte 303 Can  
**PEACH HALVES**  
2 for 49c

King Cole All Green 303 Can  
**BUTTER BEANS**  
2 for 29c

Pillsbury 1 Lb. Box  
**PAN CAKE MIX**  
2 for 35c

Roller Champion 25 Lb. Bag  
**FLOUR** \$1.95

Blue Plate  
**Mayonnaise** 39c qt.

**BANANAS**  
10c lb.



New Red  
5 lb. 29c

Member of

**Better VAL-U**  
**INDEPENDENT**  
**GROCERY STORES**  
INC. TRADEMARK

**We Will Begin Closing On Wednesday**  
**Afternoon at 1:00 PM April 24th**

**PARRISH SUPER MARKET**  
April 18-19-20  
Quantity Rights Reserved