

SUBSCRIPTION RATES. One Year \$4.50, Six Months \$2.50, Three Months \$1.25, One Month .40

PUBLISHER'S ANNOUNCEMENT

Advertising rates can be had at the office. Copy for changes must be in by 10 o'clock a. m.

Cards of Thanks Resolutions of Respect, and similar articles are charged at the rate of 5 cents per line—Cash in all cases.

Entered as second class mail matter April 26, 1910, at the postoffice at Concord, N. C., under the act of March 3, 1879.

Out of the city and by mail the following prices on the Evening Tribune will prevail:

One Month .25, Six Months \$1.50, Twelve Months \$3.00

JOHN M. OGLESBY, City Editor.

CONCORD, N. C., JULY 25, 1910

The suggestion to erect a suitable monument or establish a fitting memorial in honor of the memory of the late James W. Wilson, whose death occurred recently at Morganton, should meet with a prompt response from North Carolina people.

Concord is to be honored Wednesday by a visit from Bishop John C. Kilgo, who will preach that evening in the Forest Hill Methodist church.

President Taft said Friday that every man should have two months vacation each year. Will he please tell us how this can be done when under the present tariff law which he and his party passed a fellow can barely make ends meet by working twelve months in the year?

Tom Watson in a speech at Thomson, Ga., Saturday said he would not enter the race for Congress against Mr. Hardwick in the tenth Georgia district. He declared that unless Hardwick is beaten for Congress he (Watson) might as well retire from the arena of public life.

Negroes Plunge Knife into Body of Rival

In plain view of hundreds of pedestrians and theatre goers who were leaving a vaudeville show in Charlotte, Mary Gaston Saturday night stabbed Hattie Brown with such fatal results that she died before medical attention could be given.

The incident created considerable excitement for a time on the street. The murderer was caught shortly after the attack and safely lodged behind the bars.

Immigrations to Northwest will Turn to Southeastern States.

Migration from the Central and Northwestern parts of the country, including western Canada, to the Southern and Southeastern States, is attracting the attention of the immigration authorities.

Industrial experts say the movement to the Southeastern States will begin next October.

Judge Manning Ill.

Judge James S. Manning, of the Supreme court, is confined to his home at Durham with a severe attack of sciatica, which renders him altogether too unwell to leave his bed.

Judge Manning has been unable to walk for ten days and shows little or no improvement. His vigorous constitution will doubtless soon pull him over it, but he has been a badly afflicted man.

"Don't wear all dreamers. Sometimes they tell other men things that sound like the other man, being smart, and the dreamer says true."

HOUSEFLIES BANE OF ALL HUMANITY

Kill Them Now and Avoid Disease in Your Family Hereafter.

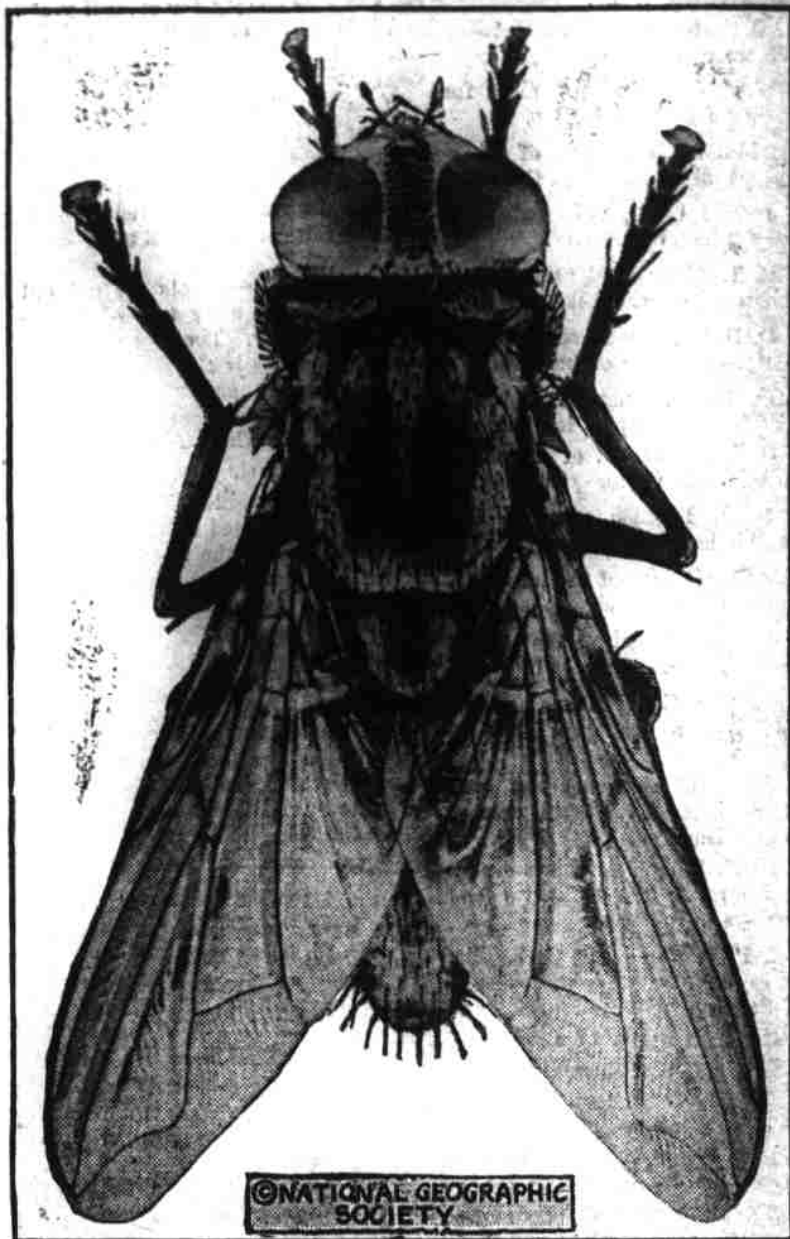
Greatest Carrier of Deadly Typhoid Germs Known to Scientists.

THE fly referred to in this article is the one most commonly found in our houses, the Musca domestica of Linnæus.

Speaking broadly, man has made the housefly. It has developed along with the human dwelling. If we had no closed in dwelling places it is doubtful if the housefly as at present con-

manage with sticky feet. Imagine our plight if the soles of our feet were sticking plaster, perennially renewing its stickiness.

To such inconvenience the fly is constantly subject, and it is this that has bred into it the habit of frequently preening itself, particularly the feet. These are constantly becoming clogged with adhering substances,



FEMALE HOUSEFLY RESTING ON GLASS AS SEEN FROM ABOVE

stituted could continue to exist. It thrives simply because we afford it food, protection and breeding places.

It is at this time of the year that the housefly takes on life for the ensuing summer and autumn. Eggs laid last fall are ready to hatch. At first it is only a little worm, wriggling its tiny grublike form in some incubating pile of filth, usually the manure pile, the outhouse or the mound of rubbish or garbage in the back yard.

Why It Is Called Typhoid Fly.

The common housefly is coming to be known as the "typhoid fly," and when the term becomes universal greater care will be exercised in protecting the house from its presence.

Flies swallow the germs of typhoid in countless millions while feeding on the excreta of typhoid patients. As a result they spread a thousand more typhoid germs in their excreta than on their feet.

Flies kill a greater number of human beings than all the beasts of prey and poisonous serpents, for they spread disease which slays thousands.

As soon as the fly comes out of its shell it is full grown and starts out in the world to make a living, and if your home is not clean it knows it, for the fly can discern an unclean odor for miles.

As much as flies like odors of filth they dislike clean smells, and where the former will attract the latter will repulse them. A pleasant smelling substance—the fragrance of flowers, geraniums, mignonette, lavender or any perfumery—will drive them away.

Most of our diseases are caused by invisible germs that lodge and grow in our bodies, destroying our tissues or poisoning us with their excreta. These germs may be brought to us from some sick person by whatever is large enough to carry them and has the opportunity. Combine this fact with what every one knows about flies and we see at once the tremendous importance of flies as carriers of human disease germs.

Feet of Flies Are Deadly.

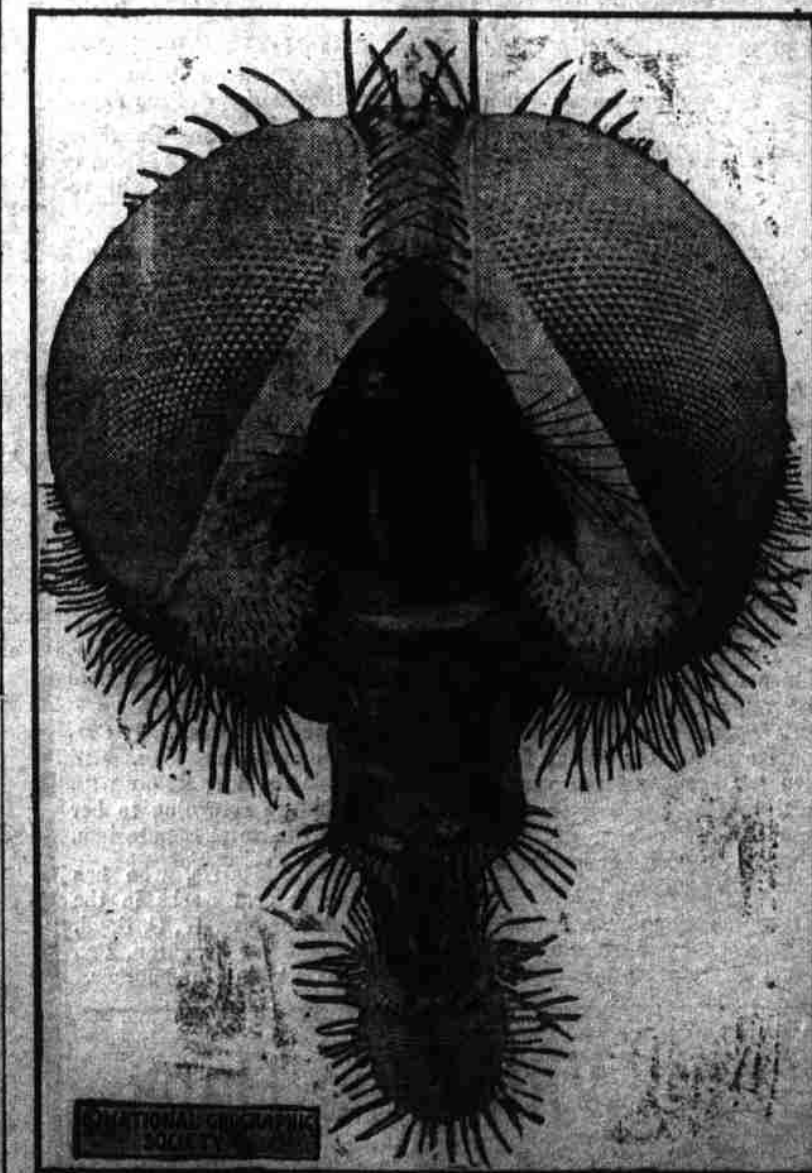
Look closely at the picture of the fly resting on the glass and viewed from below. Look at the feet and observe that each foot is equipped with two claws and two light colored pads.

The fly clings to rough surfaces by means of the claws and to smooth surfaces by a combined action of the claws and pads. The fly's pads are covered with thousands of minute short hairs sticky at the end. There is no suction—merely adhesion.

All the germs that the fly has in

and this contamination the fly must assiduously remove if its feet are to act properly in supporting it on slippery places. If this contamination is too sticky to rub off the fly laps it off, and it then passes off in its excreta.

The fly lays its eggs in the manure pile or other objectionable filth. All the germs—the imaginable abominable microbes—fasten themselves on the spongy feet. It brings them into



FRONT VIEW OF THE HEAD OF A HOUSEFLY—STUDDED AREAS ARE COMPOUND EYES.

the house and wipes them off. The fly you see walking over the food you are about to eat is covered with filth and germs.

If there is any dirt in your house or about your premises or those of your neighbors it has just come from it. Watch it as it stands on the sugar industriously wiping its feet. It is getting rid of disease germs, rubbing them on the paper that you are going

VALUABLE FLY DON'TS.

- Don't allow flies in your house. Don't buy foodstuffs where flies are tolerated. Don't allow your fruits and confections to be exposed to the swarms of flies. Don't let flies crawl over the baby's mouth and swarms upon the nipple of its nursing bottle.

to eat, leaving the poison for you to swallow.

This does more to spread typhoid fever and cholera infantum and other intestinal diseases than any other cause.

Contact Brings Disease.

Disease attacks human beings only when they are brought in contact with it. For instance, you cannot get typhoid fever unless you swallow the germs of typhoid, and you do not swallow these germs unless they get on the food you eat or in the liquids you drink or on the glasses or cups from which you drink.

Intestinal diseases are more frequent whenever and wherever flies are most abundant, and they are not the summer heat are the active agents of its spread.

There is special danger when flies drop into such fluid as milk. This forms an ideal culture material for the bacillus. A few germs washed from the body of one fly may develop into millions within a few hours, and the person who drinks such milk will receive large doses of bacilli, which may later cause serious sickness.

Strike at the root of the evil. Dispose of waste materials in such a way that the housefly cannot propagate, for flies breed in horse manure, decaying vegetables, dead animals and all kinds of filth. So look after the garbage cans, see that they are cleaned, sprinkled with lime or kerosene oil and closely covered.

Screen all windows and doors and insist that your grocer, butcher, baker and every one from whom you buy foodstuffs does the same, and remember that a large percentage of flies breed in the stable.

There is more health in a well screened house than in many a doctor's visit.

After you have cleaned up your own premises inspect the neighborhood for fly breeding places. Call the attention of the owner to them and if he does not remove them complain to the board of health.

Keep flies away from the kitchen. Keep flies out of the dining room and away from the sick, especially from those ill with contagious diseases.

Simple Means of Killing Flies.

To clear rooms of flies carbolic acid may be used as follows: Heat a shovelful or any similar article and drop thereon twenty drops of carbolic acid. The vapor kills the flies.

A cheap and perfectly reliable fly poison, one which is not dangerous to human life, is bichromate of potash in solution. Dissolve one dram, which can be bought at any drug store, in two ounces of water and add a little sugar. Put some of this solution in shallow dishes and distribute them about the house.

Sticky fly paper, traps and liquid poisons are among the things to use in

REAL ESTATE FOR SALE!

145 acres land lying on Cabarrus and Stanly county line on big road leading from Concord to Misenheimer Springs; 6 miles from Gladstone and dwelling, double barn and out houses; 75,000 feet forest pine, 25,000 feet oak, 150,000 feet old field pine, 2,000 cross ties, 1500 cords woods; lies well with clay subsoil.

18 acres land fronting on macadam road, 1 mile south of Kannapolis, with two story, 8 room dwelling, splendid barn, one other two story building, one tenement dwelling and outhouse, good orchard and splendid well of water. This is one of the finest pieces of property between Concord and Kannapolis.

Two four room cottages on St. George street, near Lock Cotton Mills, lots 60x158 feet. Your choice for \$3.50.

One new 3-room cottage in Dublin, lot 62x150 feet, good well water; \$315 on easy terms.

139 1/2 acres on public road adjoining lands of Bob Wallace and J. S. Harris; 1 outhouse dwelling, new barn, double crib, good well water, good pasture; 15 acres meadow and some fine timber.

2 vacant lots on South Union street, convenient to business part of city, 60x200 feet, for \$600 cash.

1 six room cottage on South Union street lot 134x300 feet at a bargain. 1 very desirable vacant lot 65x300 feet near business part of city.

1 vacant lot on West Corbin street, 160x246 feet, cheap at \$1,000. 1 six room cottage on West Corbin street beautifully papered with modern conveniences, lot 75x200 feet.

1 five room cottage on West Corbin street, near postoffice at a real bargain.

1 two story six room dwelling, lot 80x325 feet, near postoffice. 3 very desirable pieces of property on Spring street, convenient to business part of city.

2 very desirable residences on Georgia avenue. 1 nice cottage on corner of N. Spring and Marsh streets, with six large rooms and pantry.

1 nice vacant lot on East Depot street. 30 nice cottages and vacant lots on Franklin street, at Gibson Mill and Brown mill. We can give you some real bargains in the cottages and lots.

33 acres suitable for building lots or for farming lands. 29 acres in No. 11 township near D. V. Krimminger's land.

8 acres one mile east of court house with good dwelling, double barn and outbuildings.

The Barrier Mill property, 3 miles south of Mount Pleasant, consisting of 100 acres of land, flour mill, corn mill, saw mill, boiler and engine, cotton gin, wagon scales, all in good running condition by steam or water power. Dwelling stable and outbuildings. A good stand for business; all for \$1,600; one-half cash, balance in 12 months.

130 acres with six room dwelling, nearly new, splendid double barn, and outbuildings, situated 3 miles southwest of Kannapolis on public road. 58 1-2 acres of highly improved land, one mile west of Depot on Charlotte road.

151 acres known as the Spring Hill Farm, one mile west of depot on Charlotte macadam road. This is one of the most desirable pieces of real estate in this section of the country.

87 1-2 acres, four miles east of Concord, good buildings, good orchard, good pasture, 30 acres in cultivation, 50 acres in timber, two rich gold veins. 139 acres, 3 miles east of Concord, two story dwelling and outbuildings, 1500 cords of wood, several fine gold veins. Price \$2250. A bargain.

Good six-room residence, near North Union street, with city water in house. New metal roof just put on. Good barn; lot 67x195 feet. One of the best neighborhoods in the city. Price \$2200. On Marsh street, opposite D. J. Bostian's residence.

32 acres, all in the corporate limits of Concord, suitable for almost anything. Small stream of water running through it. About 6 acres good meadow, and 8 acres fine trucking land. Can be cut up into fine building lots. Will be sold as a whole or cut to suit purchaser.

We have several other bargains in town and country property which are not mentioned in this list.

We have inquiries every day for land and own property and we would be glad to list anything you have for sale. There is no cost to you unless a sale is made.

JNO. K. PATTERSON & COMPANY

SEABOARD AIR LINE RAILWAY.

Schedule in Effect May 15, 1910.

Quickest line to New York, Washington, Florida Points, Charlotte, Atlanta, Birmingham, Memphis, New Orleans and Points West.

Double Daily Service, with High Back Seat Coaches, Pullman Sleeping cars and Dining Cars.

Trains leave Charlotte as follows:

Table with columns: EASTBOUND, WESTBOUND, Train No., Time. Includes No. 40, 42, 44, 46, 48, 50, 52, 54, 56, 58, 60, 62, 64, 66, 68, 70, 72, 74, 76, 78, 80, 82, 84, 86, 88, 90, 92, 94, 96, 98, 100.

Local Sleeper Charlotte to Portsmouth on 132.

We operate double daily vestibule service, with through Pullman sleeping Cars, to Jacksonville, Atlanta, Birmingham, Memphis, Fort Worth, Norfolk, Washington, Baltimore, Philadelphia and New York.

For time tables, booklets, reservations, or any information, call on Jas. Ker, Jr., T. P. A., Charlotte, or address,

H. S. LEARD, D. P. A., Raleigh, N. C.

VACATION OUTING

THE GLOBOUS MOUNTAINS

Western North Carolina

"THE LAND OF THE SKY"

"THE SAPPHIRE COUNTRY"

Where There is Health in Every Breath. The Climate is Perfect the Year Round. In Spring and Summer the Region is Ideal.

REACHED BY

Southern Railway

Sold Through Trains, including Parlor Car, between Goldsboro and Asheville via Raleigh, Greensboro, Salisbury. Other Convenient Through-Car Arrangements.

Summer Tourist Tickets on Sale MAY 15TH, 1910. LET YOUR IDEAS AND WISHES BE KNOWN.

J. H. WOOD, D. P. A., Asheville, N. C. K. H. DeBUTTE, T. P. A., Charlotte, N. C. W. H. FAIRBELL, T. P. A., Raleigh, N. C.