

THE OLD HOME TOWN BY STANLEY



THE NOON TRAIN CAME IN, AND LEFT BEFORE STATION AGENT DAD KEYS MANAGED TO GET THE WAITING ROOM DOOR UNLOCKED TO RELEASE HIS WHISKERS.

In and About the City

Answer to Yesterday's Puzzle.

PIEDALS DEPOTS LOOSE O VISIT AS PROPHECY AR TIE GREEN ERA ENDS ANA SNAD S UTES RAPT S SCAR BIRD S AYES DALE R HATS EGG LATE ALE SLIME TAT ME SUFFERS P ERROR T OUTER STATES ASPIRE

Concord Marine in Maneuvers. Taking part in the greatest peace-time exercises ever held by the combined fighting forces of the United States, Lee W. Dorton, of Concord, N. C., is with the U. S. Marines who are engaged in mimic warfare on land and sea in the Hawaiian Islands and on nearby Pacific waters.

Problems concerning the defense of the Hawaiian Islands are being worked out by the Navy and Marine Corps in cooperation with the Army, the Marines serving both ashore and afloat. Several of the Marines will take part in the simulated attack on Oahu, one of the most spectacular phases of the maneuvers scheduled to take place late in April.

Run-Off Primary This Afternoon. Democrats of the city, and others who expect to support their favorite in the city election May 5th, are voting this afternoon to nominate the Democratic candidate for mayor.

Planning for County Commencement. County school officials are getting everything lined up now for county commencement which will be held here next Saturday with Dr. George R. Howard, of the State education department, as the principal speaker.

The Illinois Carpenters' Union is soliciting a \$500,000 fund from union members in the United States and Canada for the purpose of rebuilding carpenter homes destroyed in the great tornado.

CABARRUS SAVINGS BANK

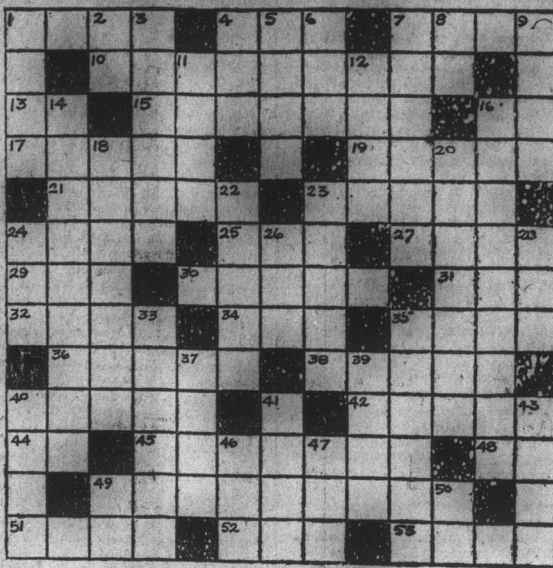
at Concord, N. C., with branches at Albemarle, Kannapolis and Mt. Pleasant, in the State of North Carolina, at the close of business April 6, 1925:

Table with columns for RESOURCES and LIABILITIES. RESOURCES includes Loans and discounts, Demand Loans, Overdrafts, etc. LIABILITIES includes Capital stock paid in, Surplus fund, etc.

Total \$3,146,993.52. State of North Carolina—County of Cabarrus: I, W. L. Burns, Vice-Pres., of the above-named Bank, do solemnly swear that the above statement is true to the best of my knowledge and belief.

W. L. BURNS, Vice-Pres. Subscribed and sworn to before me, this 17th day of April, 1925. P. B. FEITZER, Notary Public. My commission expires July 12, 1926.

CROSSWORD PUZZLE



- Do you know your Bible? Then see whether you can tell 44 horizontal without looking it up. HORIZONTAL: 1 Tube with a bowl at the end used for smoking. 2 Number of years lived. 3 Frozen precipitation. 4 To travel from place to place to lecture. 5 Bone. 6 Whiter. 7 You and I. 8 Lawful. 9 Values. 10 Confined to a particular place. 11 Balance. 12 Moisture. 13 To be sick. 14 Knots in wool fiber. 15 Provident insect. 16 Moslem territory. 17 Definite article. 18 Incrustation over a sore. 19 A kind of snow shoe. 20 Family of fish which includes pike and pickerel. 21 Eskimo home. 22 Fiction. 23 Scythe handle. 24 Vessels for flowers. 25 Giant king of Bashan conquered by Moses. 26 Steadied. 27 Point of compass or direction to Cape of Good Hope. 28 Drugs that dilate the eyes. 29 Base of the teeth (pl.).

RADIO BROADCASTING NEWS

- (By the Associated Press) Program for April 19th. WORD Batavia (275) 6:45 choral singers, Bible questions, apawes, violinist. WEMO Berrien Springs (285.5) 8:15 quartet, vocal; 8:55 sermon. WEI Boston (470) 6:20 Roxy and his gang; 8:20 organ. GWR Buffalo (319) 6:15 services. KXW Chicago (536) 7 Sunday Evening club, speaker. WGN Chicago Tribune (370.2) 9 talk, solos, composers. WLS Chicago (344.6) 6:30 organ; 7 Little Brown church, choir. WEAR Cleveland (380.4) 8:30 orchestra, either soloist. WFAA Dallas News (475.9) 7 Bible class; 7:30 services, soloists, 9:30 popular. WOC Davenport (484) 8 services; 9:30 little symphony. KOA Denver (322.4) 8:30 services. WHO Des Moines (526) 7:30 orchestra. WWJ Detroit News (852.7) 6:30 Roxy and his gang; 8:15 organ. WPAW Fort Worth Star-Telegram (475.9) 11 frolic. KNX Hollywood (837) 9 church; 10 concert; 11 classical. KFBW Hollywood (252) 11 movie night. KTHS Hot Springs Park (378.5) 8:30 orchestra; 10 frolic. WOS Jefferson City (440.9) 7:30 religious. WHB Kansas City (385.6) 7 services; 9 classical; 11:15 organ. WRBO Lansing (285.5) 7:30 services organ. KJL Los Angeles (405) 8:30 concert; 9 organ; 9:30 instrumental; 10:15 features. KFI Los Angeles (468.5) 8:45 talk; 9 stage acts, concert; 10 soprano; 11 music. WCCO Minneapolis-St. Paul (416.6) 9:15 classical. WFAF New York (491.5) 6:20 Roxy and his gang; 8:15 organ. WJZ New York (454.3) 6 orchestra; 7 soprano; 7:15 program; 8:30 violinist. WHN New York (361.2) 9 entertainers; 9:45 dance. WBBR New York (272.6) 8 instrumental trio; 8:15 choral singers, lecture, cello. WCAU Northfield (336.9) 8:30 sacred program, pianist, organ. WQAW Omaha (526) 6 Bible study; 9 musical service. KDKA Pittsburgh (306.1) 6:30 services. KGW Portland Oregonian (491.5) 9 concert, solos. WOO Philadelphia (508.2) 6:30 services. WCAU Philadelphia (278) 4:15 services; 5 orchestra; 7:30 orchestra. WGI San Antonio (594.5) 7:30 services; 8:30 band concert. KPO San Francisco (429.5) 10:30 orchestra. WGY Schenectady (379.5) 7:45 symphony; 8 orchestra society concert; 9 violin recital. KJR Seattle Post-Intelligencer (234) 9 vespers. Program for April 20th. WOI Ames (270) 10 popular. WEMC Berrien Springs (288.5) 8:15 concert. WEI Boston (470) 6:15 soprano; 6:30 Sinfonians; 7 musicals; 7:45 health talk; 8 A. & P. Gypsies; 9 organ. WGR Buffalo (319) 6 music; 8:30 musical; 10:12 dance. WEAR Cleveland (380.4) 6 musical. WLW Cincinnati (422.3) 6 concert; 10 special; 10:30 Daddy Longlegs; 11 dance. WFAA Dallas News (475.9) 6:30 Melody boys; 8:30 choral club. KOA Denver (322.4) 9 music; 9:10 classical, pianist, jazz. WHO Des Moines (526) 7:30 baritone, pianist; 8 program; 11:15 organ. WWJ Detroit News (852.7) 7 News orchestra; 8 WEAF concert. WBAF Fort Worth Star-Telegram (475.9) 7:30 classical; 9:30 Trail Blazers. KFKX Hastings (288.3) 9:30 piano, violin solos. KNX Hollywood (837) 8:15 music; 10 features; 12 orchestra. KFBW Hollywood (252) 9:45 instrumental, vocal; 11 instrumental; 12 popular songs; 1 music. KTHS Hot Springs Park (374.8) 8:30 concert; 9:15 classical, popular; 10 dance. WSUI Iowa City (483.6) 7:30 modern English; 7:45 talk; 8 college night. WOS Jefferson City (440.9) 8 address, varied musical. WDAF Kansas City Star (395.6) 6 school of the air; 6 Ivanhoe band, glee club; 11:45 Merry Old Chief, frolic. WHB Kansas City (385.6) 7 men and boys' hour. KHJ Los Angeles (405) 10 instrumental, vocal. KFI Los Angeles (468.5) 8:45 talk; 9 dance; 10 contralto; 11 instrumental, vocal; 12 orchestra. WCCO Minneapolis-St. Paul (416.6) 6 song contest; 8 talks; 9 orchestra, vocal, barjo; 10 dance. WEAD Milwaukee (275) 7:30 opera club. WMC Memphis Commercial Appeal (499.7) 7:30 farm talk; 8:30 concert. WFAF New York (491.5) 6 baritone; 6:15 Strand theater; 7:30 pianist, talk; 8 A. & P. Gypsies; 9 quartet orchestra. WJZ New York (454.3) 6 concert; 7 Wall Street Journal review; 7:10 NYU air college; 7:40 glee club; 9:45 orchestra. WHN New York (361.2) 6:30 health talk; 6:35 dance; 7 storage batteries; 7:05 orchestra; 8:30 dance; 10:30 music. WBBR New York (272.6) 7 oriental music, contralto, talk. WCAU Northfield (336.9) 8:30 program, address; 11 organ, tenor. KGO Oakland (312) 6 dance; 10 educational, book chats; 12 dance, soloists. WQAW Omaha (526) 6 organ; 6:30 announced; 6:45 orchestra; 9 program. WCAE Pittsburgh (461.3) 6:30 Uncle Kaybee; 7:30 humorous sketch; 8 string ensemble; 10 mythical drab, orchestra. KFAE Pullman (348.6) 9:30 violin, talks, soprano.

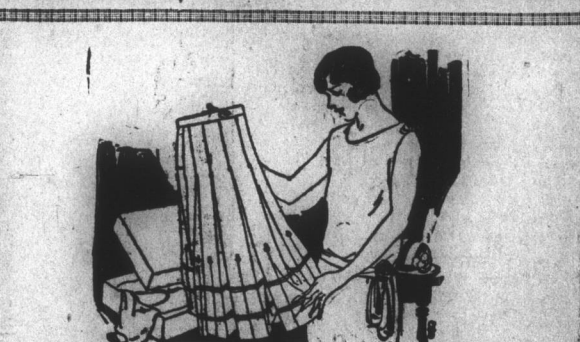


White Dress Fabrics Values Which Speak for Themselves. When the prices in the New York markets were at low tide, our buyers obtained these fine fabrics. Quantity buying made the prices even lower. The quality, too, is what you want. Long Cloths, rare values, 36 inches wide, 36-inch Cloth, finely finished, yd. 12 1/2c .15c. Long Cloth of selected fine yarn, yd. 19c. Sheer French Nainsook, for underwear, infants' dresses, etc., yd. 23c and 29c. Japanese Nainsook, lustrously mercerized, yd. 29c and 33c. Plisse Crepe, ever popular, 29 to 30 inches wide, yd. 23c. Plain Flaxon, beautifully finished, 30 in. wide, yd. 19c. 39 in. wide, yd. 29c. Mercerized Batiste, two attractive qualities, yd. 25c and 39c. Extra Quality Mercerized Batiste, yd. 49c. Pajama Checks, 36 in., ideal for underwear, too, yard 17c. Nurses' Uniform Cloth, 36 in. wide, permanent finish, yard 19c. Mercerized Voile, We want you to see this! 39 in. wide, yard 29c. Imported Voile, fine spun, mercerized, 39 in. wide, yard 49c. Mercerized White Poplin, two good values, 27 in. wide. 23c and 33c. Mercerized Poplin, 36 inch, two grades of lustrous beauty, yard 43c and 49c.

Seeks World Laurels

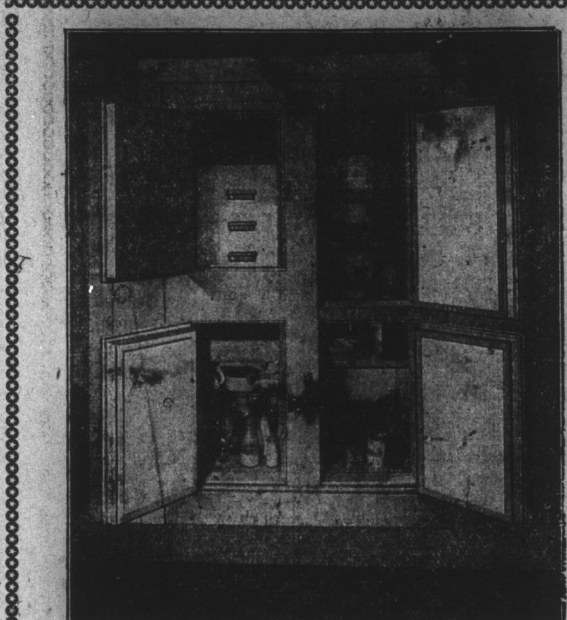


Introducing Edouard Mascart, European featherweight champion, who is now in this country in quest of the world title. Mascart is rated one of the best pugilists ever turned out across the pond. Yes, he's French.



BEAUTIFUL WORK— You just cannot help but exclaim about the beauty and thoroughness of our Dry Cleaning. Wearing Apparel looks like new when we return it to you. Let us prove it with some of your Apparel.

Bob's Dry Cleaning Co. PHONE 787



SEE THE KELVINET The Electric Refrigerator Complete At Cline's Pharmacy BEGINNING SATURDAY, APRIL 11th. The Kelvinet is ample in size for the family of four or five. It freezes dainty cubes of ice for the table. Colder than ice-cooled refrigerator and keeps foods much longer. It Operates at About One-Third the Cost of Ice. J. Y. PHARR & BRO. Phone 103, 127 or 208

Good brakes are a necessity, not a luxury. We reline them with modern factory equipment, which countersinks the rivets so that they do not cut the drum. Full line of "American Springs," Prest-o-Lite Batteries, standard accessories, Genuine Ford parts. STUDEBAKER SALES AND SERVICE AUTO SUPPLY & REPAIR CO., Inc. PHONE 228

CASH FEED STORE Will insure the life of your baby chicks when you use Startina and Baby Chick Chow for your chicks. And if you feed according to directions you can grow a two pound chick in eight weeks. All we ask is a Fair Trial. We also have Choice Timothy Hay, Oats and Sweet Feed. Phone 122 S. Church St.

SPECIAL FRIDAY AND SATURDAY Nice Fresh Fish—Croakers and Shad Miller's Southern Cake, Layer, Sponge and Angel Food Only 25c and 30c Choice Cuts Beef, Pork and Veal Sanitary Grocery Co. "A REAL GOOD PLACE TO TRADE"