

The Frankenstein

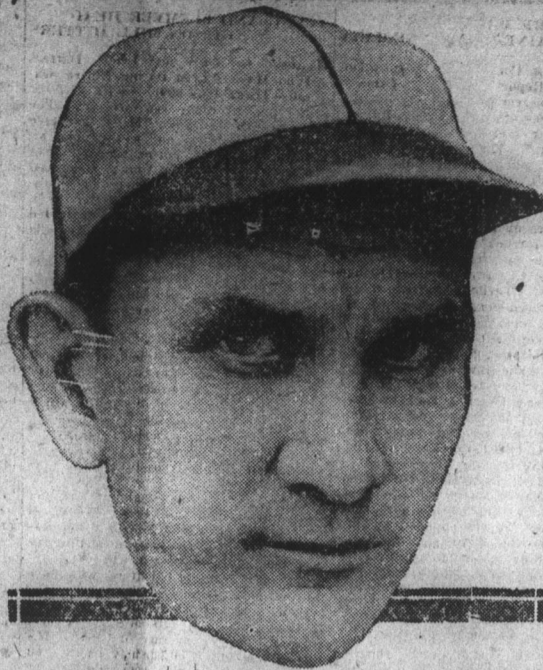


Some Modern Beautitudes
Following are some beautitudes now going the rounds of the press:
Blessed are the merchants who advertise because they believe in it and in their business; for their prosperity shall increase many fold.

Blessed are they who get their boy in early, for they shall occupy a warm place in the editor's heart.
Blessed are they who co-operate with the editor in behalf of the community, for their town shall be known far and wide as a good place in which to live.

more widespread use of southern cotton mill products, still about 80 per cent of all the men in the crowd wore English broadcloth shirts, silk socks and when they played golf they wore suits of white linen. The joke of the thing is they blame the women for following styles.
That crowd ought to all wear cotton-sock, striped madras shirts and adopt a nice pattern of ginghams to be used in their golf and sport suits.

Toins Managerial Ranks



Meet the new manager of the Chicago Cubs. In other words permit us to introduce Mr. "Habbit" Maranville, long regarded as one of the best infielders in the game. Maranville came to the Cubs in a trade with Pittsburg last winter. He's been playing professional ball over 15 seasons. He succeeds Bill Killefer, who piloted the Cubs since Aug. 4, 1921.

In and About the City

BASEBALL SUMMARY

South Atlantic League.

Table with columns: Team, Won, Lost, PC. Rows include Charlotte, Spartanburg, Macon, Augusta, Asheville, Greenville, Columbia, Knoxville.

Results Yesterday.

Charlotte 13; Macon 5. Spartanburg 6-0; Knoxville 2-5. Asheville 14; Greenville 1. Augusta 7; Columbia 5.

American League.

Table with columns: Team, Won, Lost, PC. Rows include Washington, Philadelphia, Chicago, St. Louis, Detroit, Cleveland, New York, Boston.

Results Yesterday.

Chicago 3; New York 0. St. Louis 14; Washington 3. Philadelphia 12; Detroit 4. Cleveland 6; Boston 1.

National League.

Table with columns: Team, Won, Lost, PC. Rows include Pittsburgh, New York, Brooklyn, Cincinnati, St. Louis, Philadelphia, Chicago, Boston.

Results Yesterday.

New York 6; Chicago 3. Philadelphia 6; St. Louis 4. Pittsburgh 8; Brooklyn 5. Cincinnati 9; Boston 6.

LIBRARY REPORT FOR JUNE SHOWS GAIN IN BORROWERS

Summer Heat Falls to Slacken Ardor of Reading Public.—Number of New Books Purchased.—
Summer heat failed to put a damper on the enthusiasm of the reading public in Concord, it was brought out Tuesday in the report of Mrs. Richmond Reed, librarian, for the month of June. There was a decided gain in the number of books lent from the library, the gain for June being 921 over the month of May.

Bull Weevils Getting in Their Work.

Complaint comes from almost every section of the county that bull weevils are appearing in the cotton fields and that squares are beginning to fall.
For a number of years it has been my observation that the most practical way to grow a good cotton crop is to pick up first fallen squares and burn them. By so doing there will be few weevils to grow to maturity to do their devilment in the latter weeks of July or in early August when cotton is putting on fruit at a rapid rate in this section.

Yadkin Bridge Advertised.

Lexington Dispatch.
The current issue of The Saturday Evening Post gives the Yadkin River bridge between Davidson and Rowan counties a fine bit of advertising. Among ten pictures of roads and bridges in the United States used to illustrate an article is the only one that is definitely located. The others merely are titled according to types, with the states not even mentioned in several. Unless we are mistaken several of these illustrations of types are taken from North Carolina.

England has had women stockbrokers for some years, but in Ireland the feminist advance has not been quite so rapid. Consequently, the announcement that Miss Oonah Keogh, the 22-year-old daughter of a Dublin stockbroker, has been admitted on "Change" has caused something of a sensation in the Irish capital.

KANNAPOLIS MAN ENDORSES IT

It Was a Great Surprise to Him.
"Your HERB JUICE has given me so much relief that I want you to publish the following statement in order that my friends and others may know this wonderful medicine," said Mr. R. White, well known cotton mill man, who resides in Kannapolis, N. C., during a recent conversation with the HERB JUICE man.
"This medicine was a big surprise to me," continued Mr. White, "and before I began using it I was in a general run-down condition and just felt all over. I had suffered for years with constipation and the poison that accumulated in my stomach had about ruined my health. I could hardly eat a thing, and what little I did eat would only sour and ferment, causing me to suffer so that I would wish I had gone without my meals. I was very nervous and losing in weight every day. In addition to this I was bothered a great deal with rheumatism and it looked as though nothing would give me any relief. I saw where so many Kannapolis and Concord people had given me a trial, and I went to say of HERB JUICE that I made up my mind to get relief through the use of it since I have used it, I have found it the most effective medicine that I ever used. I have been completely relieved of constipation, stomach is in fine shape, eat anything I want, never have any trouble from gas or indigestion and have gained considerably in weight and strength. The rheumatic pains have left me and I am feeling better in every way than I have in a long time. I was really astonished at the quick results I had from the use of this great medicine. I gladly give this statement that my friends and others, as stated above may know of its health giving powers, which I feel sure will help anyone."

J.C. Penney Co. A NATION-WIDE INSTITUTION DEPARTMENT STORES

Next Month's Salary—Whom Does It Belong To?

The man and wife who pay cash and shop where they can save most will tell you that next month's salary will be set aside to accomplish several things in their Thrift Plan.

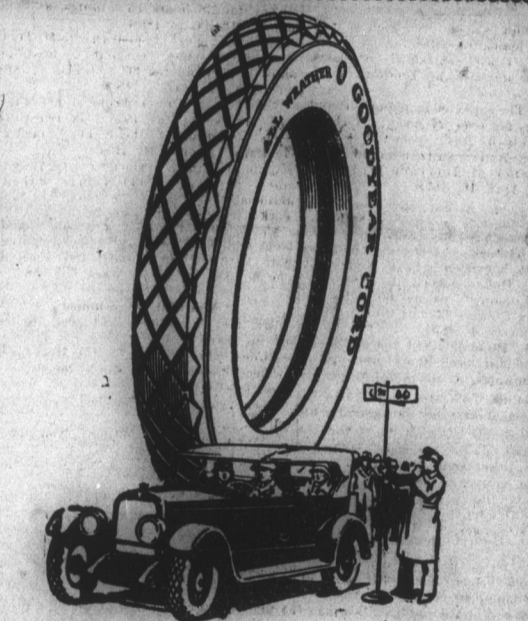
Most of them have a Budget similar to this one.

Table showing budget percentages: Food 25%, Clothing 20%, Rent 15%, Savings 5%, Insurance 7%, Amusement 3%, Education 3%, Health 3%, Charity 3%, Fuel and Water 4%, Light 1%, Miscellaneous 11%, Total 100%.

The man and wife who buy on charge accounts will tell you that next month's salary (providing there is no sickness to face), belongs to "the butcher, the baker and the candlestick maker," because the privilege of charge accounts tempts people to buy beyond their means. And charge accounts mean higher prices.

There is only one argument for "Charge Accounts" and that argument favors the SELLER, not the BUYER! It's this: People buy more when they can "Charge It" than they do when they Pay Cash As They Go!

J.C. Penney Co. We Close Every Thursday Afternoon Until September 1st



Why We Say "Buy Goodyears Now"

Goodyear quality is at the peak—never so high as it is today! Goodyear prices are low—in many cases, way down below the prices asked for ordinary tires. We think this is every tire-buyer's opportunity. So we say "Buy Goodyears now!"

Yorke & Wadsworth Co.

GET IT AT—

Phone 117

Ritchie Hardware Co YOUR HARDWARE STORE

PHONE 117

THE SOUTHERN SERVES THE SOUTH

Millions for necessities but none to spare for luxuries

Railroad profits are limited by law, and rates are fixed by the Government. In no other large business is so great an amount of capital risked for so small a return as in railroad transportation.\*

The new money put into a railroad, therefore, must be profitably employed, either in increasing capacity for service or in effecting economies of operation.

The Southern, never yet able to control all the new capital its management would be pleased to invest, necessarily has to give preference to productive improvements, such as yards, shops, engines, cars and tracks.

But it is because it has devoted its resources to necessities—rather than non-productive improvements like monumental passenger stations—that the Southern has been able to keep its service abreast of the demands of the territory it serves.



\*The net income earned by the Southern Railway Company on its property in investment has averaged only 3.72% per annum during the last ten years.

SOUTHERN RAILWAY SYSTEM