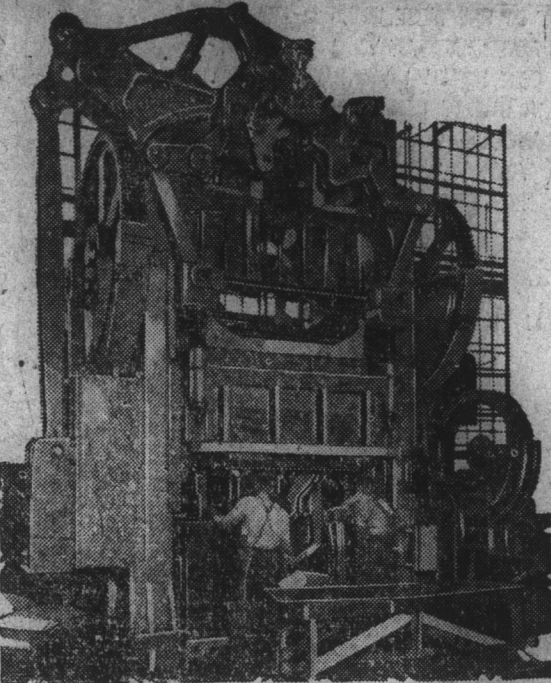


Huge Presses Shape Buick Parts



A GREAT variety of important parts are stamped from sheet metal in the huge presses such as the one shown above. In order to eliminate extra operations which would add to the cost of the finished car, many complicated dies must be developed to produce a certain part in as few operations as possible.



July Dresses

—are freshened and kept beautiful by drycleaning *** a gift from Science to meet hot-weather dress problems. When summertime demands upon wardrobes are heavy ** count upon us to give hurry-up service without slighting care in fine workmanship.

SEND IT TO "BOB'S"



PHONE 787 Office 25-27 W. Depot St.



Electrically at Your Service A Live Wire

W. J. HETHCOX

Sesqui-Centennial Exposition

PHILADELPHIA, PA., June 1-November 30, 1926 Special Excursion Fares VIA SOUTHERN RAILWAY SYSTEM

Tickets on sale daily from all Southern Railway stations up to and including September 30th, final return limit all tickets fifteen days including date of sale.

Stop-overs permitted at Washington and Baltimore in each direction within final limit of tickets.

Fine trains, excellent schedules, pullman sleeping cars, day coaches and dining car service.

For further information and pullman sleeping car reservations call on any Southern Railway agent or address: R. H. GRAHAM, D. P. A. Charlotte, N. C.



OUR PRIVATE CHAPEL AFFORDS PRIVACY, COMFORT

The modern funeral chapel provides all the privacy and comfort of a private residence plus every facility and service that the funeral director has at hand.

Our mortuary is a beautiful and restful place that provides our patrons with a type and character of service unequalled.

AMBULANCE SERVICE

BELL & HARRIS FUNERAL HOME

Open Day and Night Phone 640

Program, Invitations, Announcements printed promptly at The Times-Tribune Job Office. We have a beautiful line of wedding invitations and announcements in stock and can finish on a few hours notice. Times-Tribune Job Office.

Engraved Wedding Invitations and announcements on short notice at Times-Tribune office. We represent one of the best engravers in the United States.

Times-Tribune Penny Ads. ALWAYS GET RESULTS

"Proper Food and Exercise," by ARTHUR A. McGOVERN Former physical director, Cornell Medical College.

Too much direct sun endangers health

SUMMER heat seriously affects people whose organs are not functioning properly. You cannot afford to take chances by being in poor physical condition during the terrific heat of the summer months. Summer weather calls for much lighter food than the substantial fare that the body needs in the winter. Precaution should be taken that we do not partake too heavily of fuel foods, such as sugar, starch and fats. Sunstroke and heat prostrations generally affect a person whose sweat glands do not function, as this is one of nature's



DON'T LIE AROUND IN A WET BATHING SUIT

ways of eliminating heat and acids from the body. For those people who never perspire every care must be taken to avoid the hot sun. While on this point I strongly urge those who cannot sweat to immediately consult a physician or a reputable physical instructor as to the proper procedure to take to bring these eliminating organs back to life. This can be done by ray baths, hot tub baths, exercising in woolen underwear, rubbing the body with olive oil. Perspiration means elimination. Those who cannot enjoy a good sweat cannot know complete good health.

Calorie Diet

Those looking for a rigid reducing diet may take 2,000 calories. Those anxious to gain weight may take between 4,000 and 5,000 calories.

BREAKFAST:

- One large apple.....100 calories
A small saucer of apple sauce.....100
Half of a baked apple.....100
1 large dark banana.....100
1 ordinary canteloupe.....100
Half a grapefruit.....100
1 large orange.....100
Cereals
3 1/2 tablespoonfuls dry, hard cereal (with 1/4 glass of milk, 1 small spoonful sugar).....100
About one-third cup any cooked cereal, quarter cup of skimmed milk and one small spoonful sugar.....100
1 egg.....100
2 slices of bacon.....100
1 bran muffin.....100
1/2 corn muffin.....100
1 slice bread med.....100
1 slice dark bread toasted.....50
Coffee substitute with sugar and cream.....100
Hot skimmed milk.....100

LUNCH:

- The average soup 1 cup.....100
Baked potato.....100
A helping of spinach, sprouts, tomatoes, turnips, peas, beans.....50
Cucumbers, Cole slaw, celery, parsnips, cabbage, carrots, radishes, sauerkraut.....25
Fruit salad with no dressing.....250
Glass of milk.....150
Average dessert about.....200

DINNER:

- Average helping of lean broiled meat, chicken or fish.....200
1 average vegetable.....100
Raw vegetable salad no dressing.....100
Average dessert.....200
Hot drink.....100

© A. A. McGovern. All letters to Mr. McGovern should be addressed to No. 5 West 86th Street, New York City.

Clear Profit From Timber. Raleigh, July 9.—(AP)—There are large areas of cut-over land in the South which can be made to yield a larger clear profit from timber than in any other way, says the United States department of agriculture, in a bulletin just received here. Longleaf pine is a profitable tree for growing on these lands, it is pointed out, because it produces two crops—timber and turpentine. It grows both on the driest and deepest sandy soils and on wet lands, and it withstands the injurious effects of fire to an uncommon degree, forestry officials of the department say. With a view to encouraging reforestation, especially with longleaf pine, the department has issued a bulletin especially devoted to this subject.

Married After 50 Years Courtship. (By International News Service) Little Rock, Ark., July 10.—A courtship of a half century was culminated here, when Mrs. Mary B. Harris, 65, of Little Rock, and James W. Jordan, of Alexandria, La., were married.

It was in Tuscaloosa, Ala., a little more than fifty years ago, that the couple carried on a courtship which was brought to a close when each married someone else. In the years between Jordan's wife died, followed

shortly afterward by the death of Mrs. Harris' husband. Last year Jordan began a search for his childhood sweetheart. Failing in every effort to locate her, he inserted an advertisement in a newspaper, asking Mrs. Harris to communicate with him. The advertisement

was read by a cousin of Mrs. Harris. The advertisement was communicated to Mrs. Harris, and the old courtship was renewed.

On Honeymoon in Fishing Boat. (By International News Service) Gulfport, Miss., July 9.—Unless

plans of James Grande, one-armed Gulfport fisherman, and his newly acquired wife, whom he took from a police station cell and married in the Mayor's courtroom, have gone away, the couple are now on the bounding deep between Apalachicola, Fla., and Gulfport on a gasoline motored fish-

ing boat for a 7-day honeymoon. Bay City and Saginaw have been running neck and neck for the lead in the reorganized Michigan League. On July 22, 1926, Beaumont of the Pittsburgh team made a record of six hits and six runs in a game against Philadelphia.

NEVER BEFORE Such Bargains IN MILLINERY DURING THIS SALE COME AND SEE FOR YOURSELF



Robinson's Millinery Dept.

MISS ALLIE LEGG, Prop. Phone 830

TOWN TOPICS BY FETZER & YORKE



Mr. Lucky got a phone call: "Your home is burning to the ground" it said. And he carried no insurance. Do you? It is the only safe protection against loss.

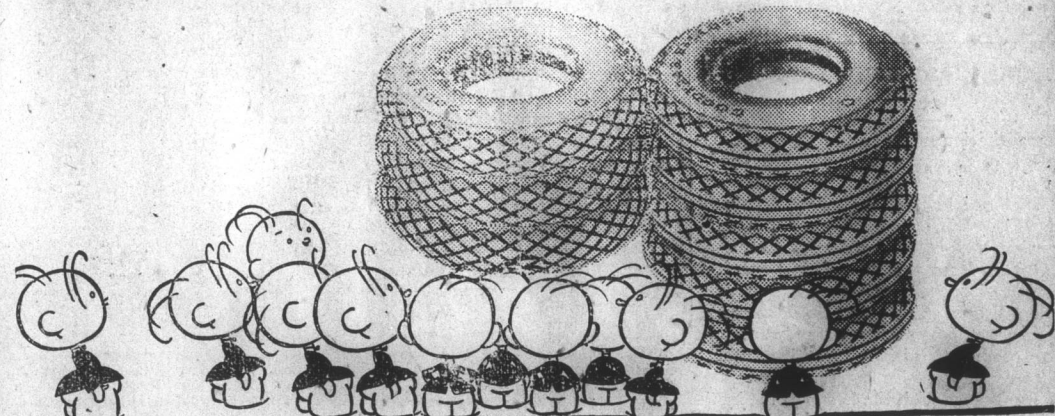


Our policy is one of candor and respectful service. Fairness is a requisite where need is to be served with dignity and consideration. And we are properly equipped to conduct a ceremony of perfect appointment.

Wilkinson's Funeral Home

PHONE 9 Open Day and Night AMBULANCE SERVICE

BIG TIRE NEWS!



Prices Reduced On Goodyears

Here's the biggest and best piece of news we've had for car owners in months. Goodyear has just announced a substantial price reduction on tires and tubes and we are passing this good news on to you in NEW LOW PRICES ON THE COMPLETE GOODYEAR LINE. Now is the time to get yours. Same supreme Goodyear quality. Same money-saving Goodyear Service from us—

YORKE & WADSWORTH CO.

The Old Reliable Hardware Store Phone 30 Concord, N. C. Phone 30

OMOLINE SWEET FEED

TO FEED YOUR HORSES AND MULES And you can feed one-third less and keep your stock up better on a Balanced Feed than you can on oats or corn.

Cash Feed Store

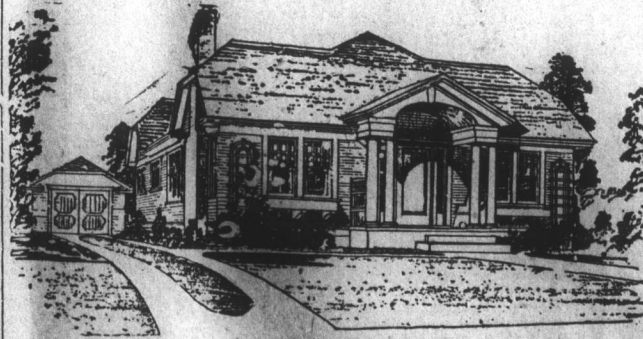
PHONE 122 SOUTH CHURCH ST.

DELCO LIGHT

Light Plants and Batteries

Deep and Shallow Well Pumps for Direct or Alternating current and Washing Machines for Direct or Alternating Current.

R. H. OWEN, Agent Phone 669 Concord, N. C.



The exterior of the Wilmington while not strictly colonial, has enough of the colonial to make it an interesting design. The rather formal entrance with turned columns, the seats at the sides and the trellis at the corners add attractiveness.

The interior is arranged for six rooms, all on one floor. An enclosed stair leads to the attic, which can be used for storage or in case of necessity for sleeping quarters. Living and dining rooms are separated by a large arch. The fireplace at the end of the living room, with built-in seats and bookcases, are features of these rooms. A china-closet is located at the end of the dining room. The kitchen is exceptionally complete, being provided with cupboards and bins, a cooler and ironing board. A generous-sized breakfast-closet is provided at the rear. Besides having two good bedrooms and a bath, all accessible from the hall, there is a den at the front, directly off the living room. Closets and linen-cases are arranged for the bedrooms. The stair to the basement and attic is placed at the rear of the hall.

The basement, being the full size of the house provides ample space for storage, laundry, fuel and furnace.

F. C. NIBLOCK

OUR PENNY ADS. ALWAYS GET RESULTS