

\$50 Couch Hammock \$37.50

All steel construction. Adjustable head rest. Material made of heavy canvass, painted in beautiful colors with sun proof paint.

25 to 30 per cent. discount on all summer goods. Porch swings, Chairs, Rockers, Couches and Rugs.

Concord Furniture Co. THE RELIABLE FURNITURE STORE



MR. COAL BUYER!

Now the Season for placing your orders for your winter's requirements of coal is at hand.

LISTEN: Every man, woman and child that lives in Concord knows that I sell Coal and Ice.

One of my competitors once said that I had made enough money out of the coal business in Concord to retire.

I also have two well-equipped coal yards, where I can store 3,000 to 5,000 tons of coal, when the market is the lowest.

My summer prices are now on and I beg to quote you: A Splendid General Purpose Coal at \$7.50 per ton

My yards have just been equipped with new double ball bearing tested scales. Full weight guaranteed.

A. B. POUNDS

ICE, COAL AND SERVICE PHONE 244

CHRYSLER

Sales and Service

SYLER MOTOR Co.

S. Church and Means St.

Phone 400



OPPOSITE NEW HOTEL

Concord Daily Tribune.

TIME OF CLOSING MAILS

The time of the closing of mails at the Concord postoffice is as follows: Northbound 19C-11:00 P. M.

RAILROAD SCHEDULE

In Effect Jan. 30, 1926.

Northbound No. 40 To New York 9:28 P. M. No. 130 To Washington 5:05 A. M.

Southbound No. 45 To Charlotte 8:45 P. M. No. 35 To New Orleans 9:50 P. M.

Southbound No. 45 To Charlotte 8:45 P. M. No. 35 To New Orleans 9:50 P. M.

Southbound No. 45 To Charlotte 8:45 P. M. No. 35 To New Orleans 9:50 P. M.

Southbound No. 45 To Charlotte 8:45 P. M. No. 35 To New Orleans 9:50 P. M.

Southbound No. 45 To Charlotte 8:45 P. M. No. 35 To New Orleans 9:50 P. M.

Southbound No. 45 To Charlotte 8:45 P. M. No. 35 To New Orleans 9:50 P. M.

Southbound No. 45 To Charlotte 8:45 P. M. No. 35 To New Orleans 9:50 P. M.

Southbound No. 45 To Charlotte 8:45 P. M. No. 35 To New Orleans 9:50 P. M.

Southbound No. 45 To Charlotte 8:45 P. M. No. 35 To New Orleans 9:50 P. M.

Southbound No. 45 To Charlotte 8:45 P. M. No. 35 To New Orleans 9:50 P. M.

Southbound No. 45 To Charlotte 8:45 P. M. No. 35 To New Orleans 9:50 P. M.

Southbound No. 45 To Charlotte 8:45 P. M. No. 35 To New Orleans 9:50 P. M.

Southbound No. 45 To Charlotte 8:45 P. M. No. 35 To New Orleans 9:50 P. M.

Southbound No. 45 To Charlotte 8:45 P. M. No. 35 To New Orleans 9:50 P. M.

Southbound No. 45 To Charlotte 8:45 P. M. No. 35 To New Orleans 9:50 P. M.

Southbound No. 45 To Charlotte 8:45 P. M. No. 35 To New Orleans 9:50 P. M.

Southbound No. 45 To Charlotte 8:45 P. M. No. 35 To New Orleans 9:50 P. M.

Southbound No. 45 To Charlotte 8:45 P. M. No. 35 To New Orleans 9:50 P. M.

Southbound No. 45 To Charlotte 8:45 P. M. No. 35 To New Orleans 9:50 P. M.

Southbound No. 45 To Charlotte 8:45 P. M. No. 35 To New Orleans 9:50 P. M.

Southbound No. 45 To Charlotte 8:45 P. M. No. 35 To New Orleans 9:50 P. M.

Southbound No. 45 To Charlotte 8:45 P. M. No. 35 To New Orleans 9:50 P. M.

Southbound No. 45 To Charlotte 8:45 P. M. No. 35 To New Orleans 9:50 P. M.

Southbound No. 45 To Charlotte 8:45 P. M. No. 35 To New Orleans 9:50 P. M.

Southbound No. 45 To Charlotte 8:45 P. M. No. 35 To New Orleans 9:50 P. M.

Southbound No. 45 To Charlotte 8:45 P. M. No. 35 To New Orleans 9:50 P. M.

Southbound No. 45 To Charlotte 8:45 P. M. No. 35 To New Orleans 9:50 P. M.

Southbound No. 45 To Charlotte 8:45 P. M. No. 35 To New Orleans 9:50 P. M.

Southbound No. 45 To Charlotte 8:45 P. M. No. 35 To New Orleans 9:50 P. M.

Southbound No. 45 To Charlotte 8:45 P. M. No. 35 To New Orleans 9:50 P. M.

Southbound No. 45 To Charlotte 8:45 P. M. No. 35 To New Orleans 9:50 P. M.

Southbound No. 45 To Charlotte 8:45 P. M. No. 35 To New Orleans 9:50 P. M.

Southbound No. 45 To Charlotte 8:45 P. M. No. 35 To New Orleans 9:50 P. M.

Southbound No. 45 To Charlotte 8:45 P. M. No. 35 To New Orleans 9:50 P. M.

Southbound No. 45 To Charlotte 8:45 P. M. No. 35 To New Orleans 9:50 P. M.

Southbound No. 45 To Charlotte 8:45 P. M. No. 35 To New Orleans 9:50 P. M.

Southbound No. 45 To Charlotte 8:45 P. M. No. 35 To New Orleans 9:50 P. M.

Southbound No. 45 To Charlotte 8:45 P. M. No. 35 To New Orleans 9:50 P. M.

Southbound No. 45 To Charlotte 8:45 P. M. No. 35 To New Orleans 9:50 P. M.

Southbound No. 45 To Charlotte 8:45 P. M. No. 35 To New Orleans 9:50 P. M.

Southbound No. 45 To Charlotte 8:45 P. M. No. 35 To New Orleans 9:50 P. M.

Southbound No. 45 To Charlotte 8:45 P. M. No. 35 To New Orleans 9:50 P. M.

Southbound No. 45 To Charlotte 8:45 P. M. No. 35 To New Orleans 9:50 P. M.

Southbound No. 45 To Charlotte 8:45 P. M. No. 35 To New Orleans 9:50 P. M.

Southbound No. 45 To Charlotte 8:45 P. M. No. 35 To New Orleans 9:50 P. M.

Southbound No. 45 To Charlotte 8:45 P. M. No. 35 To New Orleans 9:50 P. M.

Southbound No. 45 To Charlotte 8:45 P. M. No. 35 To New Orleans 9:50 P. M.

Southbound No. 45 To Charlotte 8:45 P. M. No. 35 To New Orleans 9:50 P. M.

Southbound No. 45 To Charlotte 8:45 P. M. No. 35 To New Orleans 9:50 P. M.

Southbound No. 45 To Charlotte 8:45 P. M. No. 35 To New Orleans 9:50 P. M.

Southbound No. 45 To Charlotte 8:45 P. M. No. 35 To New Orleans 9:50 P. M.

Southbound No. 45 To Charlotte 8:45 P. M. No. 35 To New Orleans 9:50 P. M.

Southbound No. 45 To Charlotte 8:45 P. M. No. 35 To New Orleans 9:50 P. M.

Southbound No. 45 To Charlotte 8:45 P. M. No. 35 To New Orleans 9:50 P. M.

Southbound No. 45 To Charlotte 8:45 P. M. No. 35 To New Orleans 9:50 P. M.

Southbound No. 45 To Charlotte 8:45 P. M. No. 35 To New Orleans 9:50 P. M.

Southbound No. 45 To Charlotte 8:45 P. M. No. 35 To New Orleans 9:50 P. M.

Southbound No. 45 To Charlotte 8:45 P. M. No. 35 To New Orleans 9:50 P. M.

Southbound No. 45 To Charlotte 8:45 P. M. No. 35 To New Orleans 9:50 P. M.

Southbound No. 45 To Charlotte 8:45 P. M. No. 35 To New Orleans 9:50 P. M.

Southbound No. 45 To Charlotte 8:45 P. M. No. 35 To New Orleans 9:50 P. M.

Southbound No. 45 To Charlotte 8:45 P. M. No. 35 To New Orleans 9:50 P. M.

Southbound No. 45 To Charlotte 8:45 P. M. No. 35 To New Orleans 9:50 P. M.

Southbound No. 45 To Charlotte 8:45 P. M. No. 35 To New Orleans 9:50 P. M.

Southbound No. 45 To Charlotte 8:45 P. M. No. 35 To New Orleans 9:50 P. M.

Southbound No. 45 To Charlotte 8:45 P. M. No. 35 To New Orleans 9:50 P. M.

Southbound No. 45 To Charlotte 8:45 P. M. No. 35 To New Orleans 9:50 P. M.

Southbound No. 45 To Charlotte 8:45 P. M. No. 35 To New Orleans 9:50 P. M.

Southbound No. 45 To Charlotte 8:45 P. M. No. 35 To New Orleans 9:50 P. M.

Southbound No. 45 To Charlotte 8:45 P. M. No. 35 To New Orleans 9:50 P. M.

Death Victim



This is a late picture of Edith Green, young Boston girl, whose dismembered body was found in a box near a Boston cemetery.

THIN MEN REJOICE

Put on pounds of solid healthy flesh in 30 days

Get That Manly Figure

Why continue to be behind the times—surely you have heard of McCoy's Cod Liver Oil Compound Tablets—the modern vitamin flesh food that has done so much for skinny scrawny men and women.

They put on weight where weight is needed—not only that but they improve your general health—bring strength—energy—more vitality.

The Pearl Drug Company and druggists everywhere sell McCoy's—60 sugar coated tablets 60 cents and if any thin person doesn't gain 5 pounds in 30 days money back. Ask for McCoy's.

Walter L. Furr

Civil Engineer Boundary Surveys, Sewerage, Subdivisions, Sewage Disposal. 19-12 Dixie Bldg. Phones 819-690

MASONIC NOTICE.

Special Communication of Stokes Lodge No. 32 A. F. & A. M. Monday evening, July 19, at 8 o'clock. Work on second degree. By order of the W. M. Visitors are welcome. J. M. CULLEASURE, Sec.

LOCAL MENTION

The Rocky River Community Club will meet Thursday evening at 8 o'clock. The program will be published in full later.

For the next two weeks there will be no ladies' classes in the afternoons at the Y. M. C. A., all of them having been shifted to mornings.

All members of Cold Spring Church and others who have relatives buried there, are asked to meet at the church Thursday morning to help clean off the cemetery.

The sidewalk in front of the Concord Theatre is being torn up today for the erection of a coal chute leading to the furnace room of the Cannon building.

The condition of James Query, of Harrisburg, who has been critically ill for some time, is reported today as unchanged. No hope is entertained for his recovery.

Thirty cripples were examined and treated at the crippled clinic held at the offices of the county health department by Dr. Myers, of Charlotte, Saturday afternoon.

Drawing will be made some time this week for the local tennis tournament to take place the last week in July. Players who haven't handed in their names are requested to do so at once.

A case of infantile paralysis within the corporate limits of Concord was reported Saturday to the office of the county health department. This is the second case reported in Concord this summer.

Warmer weather struck Concord Saturday and the mercury climbed slowly but steadily during most of yesterday, touching the 90-degree mark during the afternoon. Warm weather is predicted for tonight and tomorrow.

Brick masons are making fine progress now with the new First Presbyterian Church structure. Steel for the building has arrived and some has been placed within the past week, a large force of hands being engaged on the work.

Jesse B. Raiford, local Frigidaire salesman, is in Greensboro today attending a conference of Frigidaire men from various parts of this and other states. The company's sales campaign for the coming year will be outlined at the conference in Greensboro.

Work on the new high school at Mt. Pleasant will be increased this week when new hands go to work. Plans have been made to push the work to the best advantage during the next several weeks in hope that the structure will be finished early in the fall.

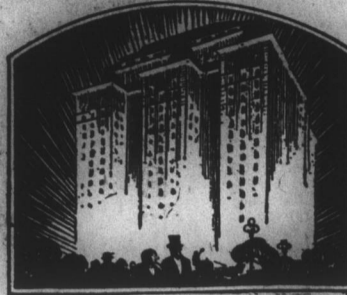
Rev. Waldo Robertson, the pastor of Bayless Memorial Presbyterian Church, and his family left this morning for Montreal, where they will spend two weeks studying Special Courses in Sunday School work, making two units in the Standard Teacher Training Course.

Only one case is to be tried in recorder's court this afternoon, police officers report. This defendant is charged with abandonment and the case first came up some time ago being continued until today. Business with the officers was unusually quiet over the week-end, they report.

Only the seniors over eighteen years of age will be received in the life-saving swimming classes at the Y. M. C. A. for the next two weeks. The hours for these classes have been moved up as follows: On Tuesdays and Thursdays the class will meet from 3 o'clock till 4 o'clock, and on Monday, Wednesdays and Fridays from 4:30 to 5:30 o'clock.

In NEW YORK stay at

The ROOSEVELT Madison Avenue at 45th Street



NEW YORK'S NEWEST SMART HOTEL

1100 ROOMS—SINGLE or EN SUITE COLONIAL THROUGHOUT

An hotel with the friendly comfort of your own home and the most thoughtful adherence to the true spirit of hospitality.

Outstanding Features

A cool haven in mid-summer—all three dining rooms are refreshed with washed air. Ben Bernie and his Roosevelt Orchestra. The Teddy Bear Cafe for children of guests; with a trained attendant in constant charge. Fireproof garage conveniently located. Travel Bureau, Guide and Auto Service. WRNY Broadcasting Station and Studio.

EDWARD CLINTON FOGG - Managing Director

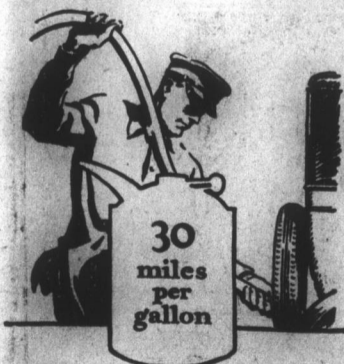


SEND FOR SPECIAL SUMMER RESERVATION CARD

OUR PENNY ADS. ALWAYS GET RESULTS

Imagine What This Saving Will Mean to You

Exhaustive tests so far indicate that the average year's operating cost of the Overland Whippet should save you from \$75 to \$150 in gas, oil, tires and mechanical upkeep. It cuts present operating costs just about in half... doubles the value of every dollar you now spend. Come in and see this wonderful new-type car.



OVERLAND Whippet

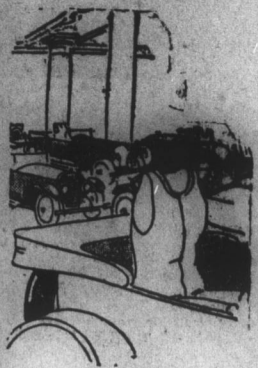
America's New-Type Light Car

CORL MOTOR CO.

W. Depot St.

Phone 630

We are up against a problem



in advertising this July storeful of cool underwear—much the same sort of a quandy an automobile dealer would be in if he had Packard, Cadillac, Lincoln Buick, Nash, Studebaker, and Chrysler all on one floor—he wouldn't know which to feature.

Since we don't know what do—we're simply telling the people of Concord it's a whale of an Underwear stock—not a Jonah to be seen!

"Mansco," "Allen A" and "Varsity" Union Suits, all as cool as an electric fan.

Cool Silk Hose, New Bat Ties, Collar Attached Shirts

HOOVER'S, Inc.

THE YOUNG MAN'S STORE

FINCK'S RED BAR OVERALLS WEAR LIKE A PIG'S NOSE

Overalls that fit, give Better Wear, and give the wearer Comfort.

We are agents for Finck's Red Bar Overalls in Concord.

RICHMOND-FLOWE CO.

High Grade Merchandise

QUALITY! PRICE! SERVICE!

These three words must be carefully studied by the grocery man. Everyone wants the best—if prices were not a factor everyone would buy the best, especially in food.

We buy Quality Goods—price them right and turn our entire stock over on an average of twelve times per year.

That is why we can beat the chain store on price and still give you the service of delivery and a charge account.

If you are not already one of our patrons, give us a trial order today.

C. H. BARRIER & CO.

Have your car greased with ALEMITE HIGH PRESSURE greasing system.

We Specialize in Car Washing, Polishing, Alemite Greasing and Crank Case Service.

Gas, Oil Tires, Tubes, Accessories, Tire and Tube repair.

CENTRAL FILLING STATION

PHONE 700

NOTICE!

We have just installed a modern Slicing Machine.

Phone us your orders for:

Bolled Ham Cured Ham Sliced Bacon Minced Ham and Dried Beef We Slice It To Suit YOU Sanitary Grocery Co.

Phones 676 and 686

CONCORD COTTON MARKET

MONDAY, JULY 19, 1926

Cotton 37 3-8 Cotton seed .....

CONCORD PRODUCE MARKET

(Corrected Weekly by Cline & Moore) Figures named represent prices paid for produce on the market:

Eggs ..... 25 Corn ..... \$1.10 Sweet potatoes ..... \$1.50 Turkeys ..... 25 Onions ..... \$1.75 Peas ..... \$2.00 Butter ..... .35 Country Ham ..... .30 Country Shoulder ..... .20 Country Sides ..... .30 Young Chickens ..... .30 Hens ..... .20 Irish Potatoes ..... 2.00

Paul B. Eaton

Patents and Trade Marks 406 Independence Building CHARLOTTE, N. C.