

PENNY COLUMN

We Have Battle Creek Health Foods.
Dove-Bost Co. 29-11-p.

Box Supper—Rimer School House.
Saturday night, October 2nd.
29-11-p.

For Rent—Furnished Bed Room.
close in. Can also furnish kitchenette if desired. Call 730R.
29-31-x.

For Rent—3 Unfurnished Rooms For light housekeeping. S. L. Braswell, 11 N. Valley St.
27-31-p.

1 Am Ginning Cotton For 25th. Also buy see. Gin any time, early or late. R. F. Kindley, Mt. Pleasant, N. C.
27-21-p.

For Sale—Fine Fresh Jersey Milk
cow. A. J. Scott, Route 3, Concord, N. C.
25-31-p.

For Sale—Poultry Farm Three Miles from Concord on Kannapolis road. Three and half acres land. Nine-room house with gas, electric lights and furnace heat. Two poultry houses each 15x70 feet. One brooder house that will take care of 500 chicks. Young peach orchard two years old. D. A. McLaughlin, real estate and building contractor. Phone 435.
25-31-x.

Birth Announcements Beautifully printed at The Times-Tribune Job Office. Call 922.
8-11-p.

Expert Painting and Paperhanging. John Rosman, 76 West Corbin St. Phone 921.
7-21-p.

IN AND ABOUT THE CITY

INSTITUTES FOR ALL TOWNSHIPS PLANNED

Sunday School Workers Adopt Plans For Annual Institutes to Start in October.

Officers of township and county Sunday School associations meeting at the First Presbyterian Church here Sunday afternoon, decided to conduct institutes in all townships in the county under plans much similar to those used in the past.

It was decided to have the institutes conducted by the departmental superintendents as has been done in the past, the new superintendents elected at the county convention in August to serve this year. This means the superintendents will begin their duties as representatives of the county association at the various institutes.

The first of the institutes will be held on the second Sunday in October at Poplar Tent Presbyterian Church for No. 2 township. Dates for the other institutes will be announced later.

H. E. Bonds, president of the county association, was present at Sunday's meeting, and other county officers also were present.

To maintain a 100 per cent. average with the State Sunday School association it is necessary that township institutes be held, and by their decision to hold such institutes new officials of the county association indicate their determination to maintain the high standard set by other officials of the association.

Superintendents of the various departments are:

Superintendent Adult Division—John Funderburg.

Superintendent Administration Division—O. A. Swearingen.

Superintendent Children's Division—Miss Mae Blackwelder.

Superintendent Young People's Division—Mrs. H. S. Williams.

Executive Committee—Sam Black, C. J. Goodman, O. A. Barringer, J. B. Robertson, R. L. Hartse.

HIGHS PLAY SECOND GAME WITH ALBEMARLE

Benefiting From Faults Developed in Opening Game, Squad Is Hard at Work Now.

Faced with faults brought out in the opening game of the season last Friday, members of the high school football squad are down at hard work this week trying to iron out these faults and perfect a more sustained attack for the game with Albemarle this week.

The game this Friday will be played in Albemarle against a team of which little is known here. The locals are taking no chances, however, and will offer their strongest lineup. Quite a number of fans plan to accompany the team to Albemarle.

As a whole the locals played well Friday even though they were defeated by King's Mountain. The line held so well that the visitors had to resort to the air to make their scores, and a little more attention to fresh plays and better handling of the ball would have prevented at least two of the touchdowns scored by the visitors.

The backfield showed plenty of drive at times although the attack could not be sustained. The hot weather probably had something to do with this as the mercury stood at about 85 while the game was played.

Coach McAuley is devoting much time to practice this week to play a steady game to the team, so as to get better co-ordination between the backs and linemen. Interference was lacking on many of the end runs last Friday and several line plays were halted because the ball carrier was slow in getting started. The squad will be drilled hard this week in perfecting these plays.

The present squad is one of the biggest in the history of the school and shows promise of developing a consistent eleven. There is plenty of material although much of it is so green it will probably take several games to get anywhere near the full strength developed. Persons who have watched the squad are confident it will furnish a successful team before the end of the season.

WARMER WEATHER IS PREDICTED FOR STATE

No Rain Fell Monday But Temperatures Remained Low.—Expected to Rise by Tomorrow.

A rise in temperatures throughout the state is expected by tomorrow, following the unusually cool weather of the past several days.

Despite overcast skies that indicated rain would fall at any moment, Monday was about as dry as other days during the past several weeks and when the sun broke through this morning there had been no rain.

Low temperatures prevailed throughout Monday, the mercury standing at about 70 degrees on an average for the day. Fires were in evidence in homes throughout the city Monday night, and they felt good, there being enough snap in the air to make fireless rooms rather uncomfortable.

Weather reports today indicate that temperatures would rise slowly during the day with a marked change by tomorrow.

Reports from various parts of the State show that the cool snap is general in Tar Heel but no frost was reported.

HOTEL DINING ROOM TO BE OPENED SOON

Management Plans to Open Dining Room on October 10th.—Reservations For Fair Week Received.

C. Ross Weirick, manager of Hotel Concord, stated this morning that he expects to open the main dining room of the hotel on October 10th. The dining room has been closed during the summer. Waitresses for duty in the dining room are being signed up now and it is hoped all plans for the opening will be ready by the 10th of next month.

Reservations for fair week are coming in rapidly now. Mr. Weirick stated, and the hotel expects to take care of scores of visitors during the week.

In this connection Mr. Weirick stated that Concord persons should be better acquainted with the rates of the hotel so they can advise any strangers who might want such information. The rates are \$2 a day without bath and \$2.50 and \$3 a day with bath. These are single rates, it was explained. "I have been told," Mr. Weirick said, "that some confusion has arisen about the rates, many reports detrimental to the hotel having been circulated about the city. The rates are \$2, \$2.50 and \$3."

Four large "Hotel Concord" road signs have been erected in various parts of the county within recent weeks, Manager Weirick said. One is located on the Concord-Salisbury road near Glass, one is on the Concord-Mt. Pleasant road, one on the Concord-Charlotte road and one on the Albemarle-Charlotte road.

The signs carry pictures of the hotel, the rates and the fact that an excellent coffee shop is maintained at the hotel. The signs are 10 feet high and 42 feet long and in the near future will be electrically equipped so they can be lighted at night.

LAST CALL

Season Tickets Going Fast.—Not Many Tickets Left.

Someone will fail to get his or her season ticket to the big Cabarrus County Fair. We have tried to impress on our readers that our supply of these tickets is limited, and we now see that there will be many who will come too late to get their free tickets.

Our generous offer of giving a free season ticket with one year's subscription to The Tribune in advance has met with such approval that our supply of tickets should have been larger to fill the demands.

There are only a few of these tickets left, and they will go to the first subscribers who pay one year in advance on their subscriptions. After that, there will be no more offered.

Phone 78 at once if you don't want to be disappointed, or stop in the Tribune office and get your ticket to take home with you today.

Death of John L. Holshouser

John L. Holshouser, of China Grove, died at his home Thursday afternoon at 4 o'clock at the age of 67 years. He had been in ill health about two years. The funeral and burial took place at 3:30 o'clock Friday afternoon at Mt. Zion Reformed Church, China Grove, conducted by the pastor, Rev. J. H. Keller. The sons and stepsons acted as pallbearers, while the consistency of the church were honorary pallbearers.

The deceased is survived by the widow, two daughters, Mrs. M. D. James, of China Grove, and Mrs. A. H. Wertz, of Charlotte, also two sons, W. C. Holshouser, of Greensboro, and Arthur H. Holshouser, of Salisbury. Four stepsons also survive, these being Rev. Shuford Peeler, of Catawba college; T. C. Peeler, of Rowan; H. J. Peeler, of Kannapolis; and L. F. Peeler, of Greensboro.

Sign on Rear Car of Train Tells World It's One of Best in Country

The Southern Railway has added another attractive feature to its crack trains, Nos. 37 and 38, known as "Crescent Limited." This feature is a large electric sign which is carried on the rear coach, with a blue glass background. When lighted the sign shows the outline of a crescent, surrounded by many small stars.

The Crescent Limited is one of the finest trains in operation in the country today. It is equipped with Pullman cars throughout and offers such service as is obtainable only on the best trains.

Train No. 37 carried the sign when it passed through Concord Monday, this being the first time it was seen in the city.

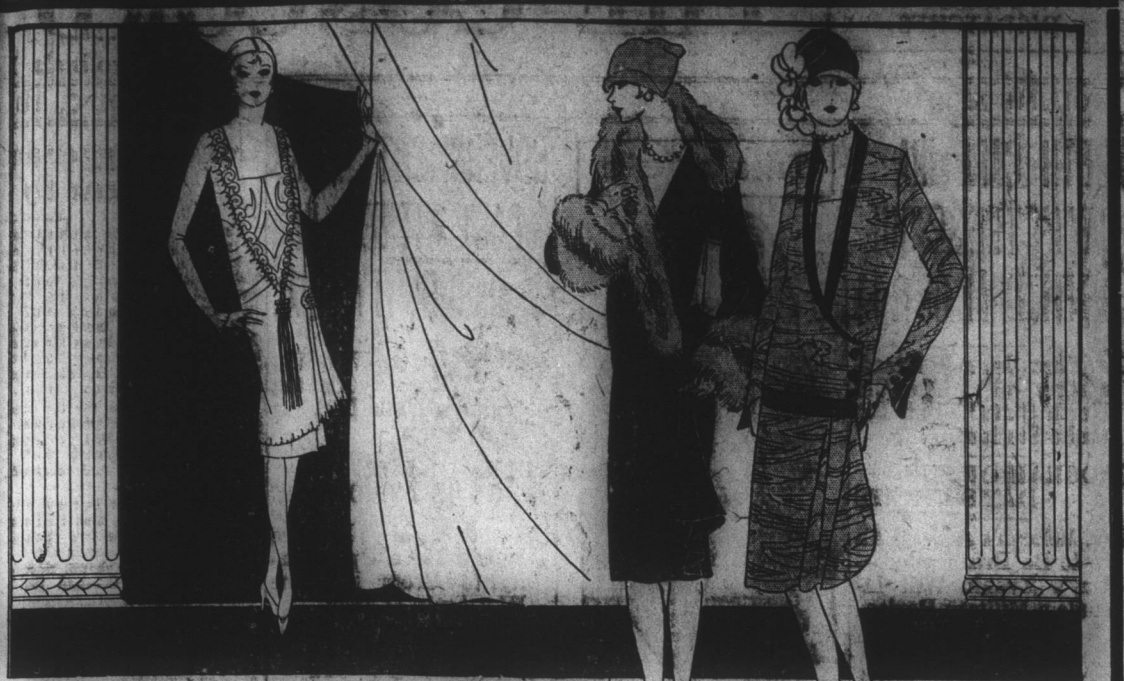
Rowan Farmers Union

The quarterly meeting of the Rowan County Farmers' Union will be held in the auditorium of the Farm Life School at China Grove Saturday, October 2, beginning at 10 a. m. All delegates are being asked to take dinner and as many as the ladies as possible are urged to be present.

J. S. McCorkle, of China Grove, is president of the Rowan Farmers' Union; A. M. Miller, of Route 2, Salisbury, is secretary-treasurer, and Orin Cruise, Rockwell, is business agent, with the executive committee being composed of J. M. Ketchie, L. I. Canbie, T. E. Webb, J. R. Cress and D. E. Upright.

Express Company Will Transport Relief Supplies Free

The Southeastern Express Company will transport free of charge to Florida, supplies which are consigned to the American Red Cross and other authorized agencies for use of the storm sufferers.



New Fall Fashions
Every Woman Will Love These Frocks

Their chic, their distinction, and above all, their exquisite quality will appeal to every woman who knows the smart frock and wears it.

New Fall Frocks Developed in Crepe Satin

These new Fall Models suitable for both street and afternoon wear have just arrived.

Youthful modes with bloused back and left side draping—others in jumper and one-piece styles. Some are trimmed with contrasting georgette. Others have collars, cuffs and belts trimmed with gilt and tan embroidery. All are decidedly smart and up-to-the-minute.

Our Prices range from **\$9.95 UP**

Fine Fall Coats At SPECIAL PRICES

All Late New Styles, Fine Workmanship and Materials bought early to avoid the big strike in New York. Our prices range from **\$4.95 TO \$75.00**

Come early and take advantage of this big buy. Children's Coats, all sizes. Priced **\$2.95** to **\$14.95**

New Millinery Coming in Every Day

PARKS - BELK CO.

In the Affairs of Royalty



Formal announcement was to be made of the engagement of Princess Astrid of Sweden and Prince Leopold of Belgium. A hurried knife narrowly missed Princess Louise of Sweden, said reports from Japan. King Alfonso of Spain was reported having trouble with soldiers and citizens opposed to the policies of his Premier.

EFIRD'S

Men's Fall and Winter Union Suits
95c to \$1.35

Boys' and Youths' Union Suits
48c to 95c

Men's Overalls 95c to \$1.95

Boys' and Youths' Overalls 39c to 95c

Men's Work Shirts 65c to 79c

Boys' Work Shirts 48c to 75c

Boys' Dress Shirts, Attached Collars
Broadcloth 85c

Men's Dress Shirts, with or without collars 95c to \$1.95

EFIRD'S

Fisher's Presents The Very Newest Parisienne Creations

They have just been unboxed—faithful copies of Reboux, Suzanne Talbot and many other notable Parisienne creator's latest expressions of the mode in felt and velour. The colors are new; the shapes inimitable; and the prices remarkably modest.

\$10 to \$15

FISHER'S
THE ALWAYS SMART

It's a darb---isn't it?

"A.I." certainly does it stuff—soes where you want it to go, when you want it—keeps you free and fresh and happy.

And, to make a long story short—get "A.I." today from your favorite grocery store. It's pleasing—happily so.

A.I. COLA
BOTTLES 5c

The Answer is "A.I."