

The Skyland Post

ADVERTISE in The Skyland Post, the only newspaper that is printed in Ashe county, and the newspaper with by far the best subscription list of any paper circulated in the county

SUBSCRIBE to The Skyland Post, the only newspaper that is printed in Ashe county, and the newspaper that is by far the most popular and widely read of any circulated in Ashe

VOLUME VI, NUMBER 8

\$1.00 A Year In Ashe County

THURSDAY, FEBRUARY 20, 1936, WEST JEFFERSON, N. C.

\$1.25 A Year Out Of County

PUBLISHED EACH THURSDAY

All High Schools Except Three Are Closed In County

Buses Unable To Make Usual Trips; Superintendent Expects All To Open Monday

All high schools in the county, with the exception of Nathans Creek, Elkland, and Healing Springs have been closed during the past week because of the extreme cold and the condition of the roads which makes it impossible for some of the buses to travel.

Superintendent Miller regrets that the school will be delayed in letting out for summer vacations as it may work a hardship on many who plan to attend summer schools, but the situation that has developed has been impossible to avoid.

All schools are expected to resume their usual work next Monday.

Highway Officials Estimate \$3,000,000 Needed For Repairs

Charles Ross Thinks That Amount Needed Will Represent One Percent Of Investment

Charles Ross, general counsel for the highway and public works commission, said that even if the weather damage to the highway system this winter is \$3,000,000 it represents only 1 per cent of North Carolina's investment in highways.

"We have had probably the most destructive weather conditions from a road point of view that we have had in 30 years," Ross said, "but it seems to me no occasion for alarm."

"Our maintenance budget is on the basis of ordinary or average weather conditions," he continued. "This is an abnormal condition and the abnormal damage is not peculiar to the highways. The damage to all classes of exposed properties is perhaps as relatively great as highway damage."

"If the highway system, representing an investment of more than \$300,000,000, completely exposed to the elements and bearing up a traffic more destructive by reason of its weakened condition, can be restored to anything like normal for 1 per cent of its cost I think we are lucky."

Zeb Gambill Elected Treasurer Of County Dem. Executive Com.

Contributions From Those Who Are In Sympathy With Party Are Welcomed

The Skyland Post is in receipt of the following letter:

Editor of the Skyland Post:—Since a number of people in recent weeks have made inquiry of me as to the proper person through whom to make contributions to the Democratic Party in the County, and since the County Democratic Executive Committee has not heretofore had any duly designated Treasurer, at a recent meeting of the said Committee, Mr. Zeb V. Gambill, the Secretary of the Committee, was duly elected as Treasurer also. Therefore, any person desiring to make a contribution to the Party for campaign purposes will please make said contribution to Mr. Gambill as Treasurer so that proper credit may be given and proper records of such contributions may be kept. The County Democratic Organization welcomes any contributions from any person in sympathy with the aims and purposes of the Democratic Party and will appreciate it if all persons having any money they desire used for that purpose will place same in the hands of the duly designated Treasurer of the Committee.

IRA T. JOHNSTON,
Chairman,
Ashe County Democratic Executive Committee.

The island of Barbadoes in the West Indies has no jungles, no forests, no mountains, no rivers, no lakes but is the most densely popu-

Would Check Foreign Importations



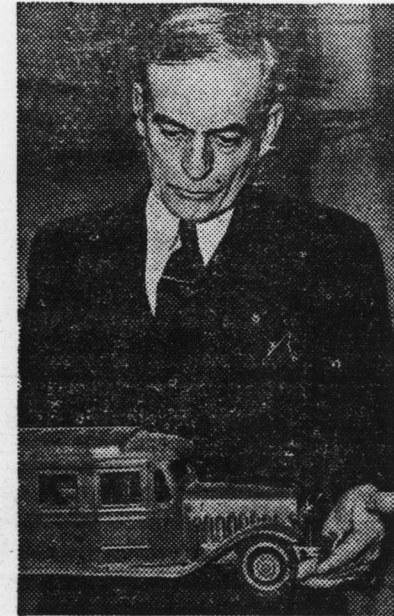
Representative Jennings Randolph of West Virginia, who will shortly open a drive against the importation of foreign-made goods in the United States. Mr. Randolph's drive is especially aimed at Japanese and Russian articles being sold in this country.

PERENNIAL FLAPPER



Fannie Ward, the little lady who seems to have learned the secret of eternal youth, pictured on her arrival at New York from Europe on the liner Bremen. She was accompanied by her daughter and son-in-law, Lady and Lord Terence Conyngham Plunket.

ONION KING WORKS



Just a few years ago Clyde H. Melton of Devine, Texas, headed a \$3,500,000.00 enterprise and was known as the "World's Bermuda Onion King." The depression came, bank failures wrecked the financial structure of business, and today he is fighting his way back to economic independence as a salesman of toys in a store in Pasadena, Calif.

Gambill To Fill Vacancy Left By Elder Edd Davis

Mr. Edd Davis who has been a member of the County Board of Education since April 1933, and Chairman of the Board, has resigned as a member of the County Board of Education. Acting under Section 5416 of the North Carolina Code, the Ashe County Democratic Executive Committee met and unanimously elected Mr. Zeb V. Gambill as a member of the County Board of Education to fill the vacancy caused by the resignation of Mr. Davis.

LATE NEWS BULLETINS

Accused Slayer Is Acquitted

Kid Cann, former bootlegger and accused slayer of Walter Liggett—Minneapolis newspaper publisher, was acquitted Tuesday of first degree murder after a trial that lasted several weeks.

Kid Cann, whose real name was Isadore Blumenfeld, was definitely identified by the murdered man's wife as the killer. One other witness to the murder identified him. Cann's defense was centered around an alibi that he was in a barber's chair at the time and in no way near the crime.

Supreme Court Upholds TVA

The Roosevelt administration won the Tennessee Valley dispute in the Supreme Court Monday.

An opinion by Chief Justice Hughes, from which Justice McReynolds alone dissented, held:

The government may build dams for constitutional purposes. It may sell electricity generated by such dams. It may take steps to carry that electricity to a market.

Constitutionality of the vast TVA project as a whole was not interpreted. The court limited its ruling to the above-mentioned issues.

New Dealers hailed the decision. Citizens of Florence, Ala., danced in the streets. Power interests declined immediate comment. Stock market traders guessed wrong, with utility prices dropping after an initial rise in a 4,722,000-share day.

Bank Deposits Now Largest In History

The comptroller of the currency reported in Washington this week that national bank deposits of \$24,947,733,000 at the close of 1935 were the largest in history.

The total shown in condition statements of 5,392 active institutions last December 31 exceeded by 2.06 per cent the previous peak by \$500,353,000. That was established December 31, 1928, when 7,635 active banks reported.

Officials attributed the upturn primarily to heavy government spending.

Prof. Martin To Be Speaker At Church In Jefferson Wed.

Professor Joseph Martin, Principal of Lansing High School, will be the visiting speaker at the midweek service of the Jefferson Methodist Church Wednesday night, Feb. 26.

Dates Are Announced For Registration For Parkway Employment

Employment Office For Ashe Open Every Day In Council Office In Jefferson

J. B. Hash, district manager of the N. C. State Employment Service, has announced that a representative of the employment service will be at the following places for the purpose of registering any persons who have not already registered and who are interested in securing employment on the Blue Ridge Parkway:

Laurel Springs, Wednesday, Feb. 26th.

Glendale Springs, Thursday, Feb. 27th.

Idlewild, Friday, Feb. 28th.

The hours for registering at each place will be from 9:30 a. m., until 12:30 p. m.

Mr. Hash states that it will not be necessary to re-register if those desiring work have registered with the employment service within the past six months.

The employment office, which has been open only on certain days of the week, is now open every day in the Major Council law office at Jefferson.

Number Of Farms In North Carolina Increase In Number

Alleghany County Shows Increase In Ownership And Ashe Slight Decrease

A recent issue of the University of North Carolina News Letter reveals some interesting information regarding farms and farm ownership in North Carolina and in the various counties.

The 1935 census of agriculture reveals many interesting facts about agricultural conditions and trends in North Carolina, especially in the field of farm tenure.

In the first place, in line with the national trend, there has been a large increase in farms in the state. North Carolina now has about three hundred and one thousand farms, or twenty-one thousand more than five years ago. The increase has been principally in the western part of the state, frequently in the poorer agricultural areas, which indicates a return to the land by urban unemployed to engage in subsistence farming.

Probably the most interesting fact revealed by the 1935 census of agriculture is the large increase in the number of farms operated by full owners. From 1910 to 1930 the entire increase in farms in North Carolina was more than accounted for by the increase of tenants alone. From 1920 to 1930 North Carolina had a loss of 16,082 farms operated by full owners, and an increase of 20,156 farms operated by tenants. During the last five years the number of farms operated by full owners has increased from 115,765 to 128,394, and farms operated by part owners have increased from 25,680 to 29,717. On the other hand, the farms operated by all tenants have increased from 17,615 to 142,158, and farms operated by cropper tenants have actually declined from 69,091 to 66,393.

The following table, based on the 1935 census, giving Ashe and neighboring counties is of interest:

First column, No. Farms; Second column, % Owners; Third column, % Part Owners; Fourth column, % Tenants.

Alleghany	1,651	68	14	7
Wilkes	5,638	66	11	23
Watauga	2,614	64	18	18
Ashe	4,061	60	18	22

The following table is based on the years 1930-1935:

First column, No. '35 Owners;				
Second column, Part Owners;				
Third column, Increase in Owners.				
Wilkes	3,707	643	7.5	
Alleghany	1,130	237	6.3	
Watauga	1,685	465	3.4	
Ashe	2,429	722	1.5	

WOMAN'S CLUB TO MEET 28TH

The Woman's Club will hold its February meeting Friday, the 28th with Mrs. C. D. Neal entertaining.

CHIEF ROAD BUILDER



Col. Willard T. Chevalier, vice president of the McGraw Publishing company, who was elected president of the American Road Builders' association for the year beginning in May at the annual convention of society at Cleveland, Ohio. Colonel Chevalier will lead a co-ordinated campaign of the American Road Builders to reduce motor vehicle deaths and accidents on our highways through an engineering analysis of this problem.

SNOW QUEEN



Miss Viola Smith of White Plains, N. Y., is the versatile snow queen of Lasell college, Auburndale, Mass. She was chosen student head of winter sports and is shown trying out her snowshoes after a recent blizzard.

January Auto Deaths Lower Than Usual

Snow And Ice In January Were Dangerous But Drivers Used More Common Sense

Sixty-one persons were killed by automobiles in North Carolina last month, the smallest motor fatality list for a like period since April 1934.

The Division of Highway Safety reported there were 61 persons killed and 592 injured in 492 accidents in January, compared with 90 killed and 506 injured in January 1935. In December 115 were killed.

Capt. Charles D. Farmer of the Highway patrol said he attributed a part of the decrease to "an act of God, all this bad weather we've been having." He added that what driving was done during most of January was more hazardous than usual and showed "people can drive carefully and safely if they will."

Governor Ehringhaus said he was gratified at the drop in fatalities. He expressed the opinion part of the decrease might have been occasioned by "making the people more safety conscious" through campaigns, but he also said he thought it evidenced "better enforcement and observation of the laws."

There were 54 fatal accidents last month, and pedestrians were involved in 26 of them. There were five children under 14 years of age killed playing in the streets.

Only three fatal accidents were caused by intoxicated drivers, compared with 13 in December. One deaf mute was driving a machine involved in a fatal accident.

In only one fatal accident was a woman driver, involved, while out-of-State cars were involved in four fatal and 49 non-fatal wrecks.

The hour between 7 and 8 at night was the most dangerous in January, nine fatal and 52 non-fatal accidents occurring in that period, while Mondays and Saturdays were the most dangerous days with nine fatal accidents on those days.

President Asks For Cuts In Expense Of U. S. Government

All Government Agencies To Be Canvassed For Possible Reductions

President Roosevelt asked Acting Budget Director Daniel Bell Tuesday to study possible governmental expense cuts. It was said Mr. Roosevelt expected to receive some reports on the board study of possible savings in governmental expenditures in about a week.

The President disclosed that the study contemplated:

1. A reduction in appropriations or authorizations which would reduce the public debt.

2. A study of appropriations which would affect the budget submitted for next year.

3. The previously announced plan to cancel authorization for government loans which will not be necessary.

No specific sums were mentioned pending a canvass of all government agencies.

May Not Need New Taxes To Pay Bonus

Senate Asked To Make Appropriation; Tax Program For Farm Relief Is Delayed

An appropriation of \$1,846,000,000 to pay the soldiers bonus was asked in the Senate Friday—with word from an administration spokesman that it would not require new taxes.

Senator Byrnes, Democrat South Carolina, introduced an amendment to the independent offices appropriation bill to provide the funds for paying the bonus out of borrowed money. He issued a statement saying it would not require additional taxes.

A short while earlier, Representative Patman, Democrat of Texas, filed a petition in the House designed to put that chamber on record as to whether the bonus should be paid in new money.

House leaders claimed this move—as well as the companion inflationary move to pay \$3,000,000,000 of farm mortgages with new money—would be beaten. Twenty names were reported on the Patman petition when the House adjourned at nightfall. Nearly 200 additional signatures would be required to force a vote on the question.

Meanwhile, perfection of the administration's tax program for financing the new farm plan was delayed at least until this week.

Deputies And Local Police Arrest Post Office Robbers

Helton Post Office And Roscoe Testerman's Store Robbed Last Friday Night

John Petty and Blane Blackburn were lodged in the county jail Sunday afternoon charged with robbing the post office at Helton and Roscoe Testerman's store which is in the same building as the post office. According to Mr. Testerman, only about four dollars was taken from the store and about that much more damage was done in wrecking the store and its contents. The store looked as if a wind storm had struck it, according to those who were first on the scene. The robbers had deliberately torn up all they could not take with them.

The boys were chased from Saturday morning until Sunday afternoon before they were finally apprehended. Blackburn is said to have gone to his home after the robbery and been frightened away without taking time to put his shoes on and because of his bare-foot condition he was more easily tracked.

Those assisting the local deputy Frank Porter in arresting the boys were David Burkett, Walter Stringer, Otto Parsons, W. C. Baldwin, W. C. Thomas, Avery Ashley, Ves Shumake, and C. P. McMillan.

Rumors are abroad that the boys taken had a hand in the Bina and Tuckerdale post office robberies.