

BELIEVE-IT-OR-NOT
The Skyland Post is the only paper in North Carolina having an audited circulation of over three times the total population of the town in which it is published.

The Skyland Post

ASHE COUNTY
is the air-conditioned section of North Carolina whose altitude ranges from 3,000 to 5,500 feet above sea level. Twenty-five miles of the PARKWAY run through the county.

VOLUME 10, NO. 35 \$1.50 a Year Out of County WEST JEFFERSON, N. C. THURSDAY, AUG. 29, 1940 \$1.00 a Year In Ashe County PUBLISHED EVERY THURSDAY

Rapid Progress Made On Bridges, Highways And Railroad

West Jefferson Will Vote On Street Bonds Tuesday

With Bonds of \$19,000, Project Will Give Town Nearly \$37,000 Aid

Tuesday citizens of West Jefferson will have an opportunity to cast their votes for or against the issuance of \$19,000 in bonds to improve the streets, for the election will be held at that time. The ballot which the voter may mark yes or no carries this statement, "Shall the qualified voters of the Town of West Jefferson approve the ordinance passed by the Board of Aldermen of said town entitled 'An Ordinance Authorizing the Issuance of \$19,000 Bonds of the town of West Jefferson for street improvements sidewalks, curbs, gutters, and the levy of a tax sufficient to pay the principal of and interest on said bonds so authorized; and also approve of the said indebtedness to be incurred pursuant to the said ordinance.'"

Due to the condition of the streets and the long felt need for their improvement, there is expected to be little opposition to the bond issue at this time.

The town has already secured a WPA project for around \$18,000 which, with the sponsor's part of \$19,000, would give the town approximately \$37,000 worth of street work at a relatively small cost, since the town would only have to pay for about one half of the total improvements.

The election Tuesday will be held at the town building and Bernard Graybeal and Charles McNeill will serve as judges and F. B. Jones as register.

The polls will be open all day as usual. F. B. Jones stated that there were only around 365 qualified voters registered at the present time. The issue will be decided upon by a majority of the votes cast.

In the event that the voters decide in favor of the bond issue, a preliminary survey of the streets will probably be made at once, and work will go forward just as soon as the bonds are sold.

J. W. Luke Ends Ministry Here

Has Served As Pastor Of The West Jefferson Church For More Than Five Years

On Sunday evening Rev. John W. Luke brought to a close ministry of more than five and one half years in the West Jefferson Presbyterian church. The coming of Rev. Carl Stark to the county lightens Mr. Luke's activities to this extent. A good congregation was present for the final sermon of Mr. Luke. In appreciation of his fine work there the congregation presented him with a radio which had been placed behind the pulpit.

The church has made a good progress during the ministry of Mr. Luke. It has grown in membership and in influence. Mr. Luke's work with the Boy Scouts has been outstanding. Pressure has been brought to bear that he continue his work the Scouts. The interior of the auditorium has been done over, with the floor sanded and finished and handsome new pews installed.

Services will continue in the church. Rev. R. H. Stone will preach there on Sunday morning at 11:00 A. M., and at that time announcement will be made as to the schedule of services in the future. Sunday School meets each Sunday morning at 10.

To Pool Lambs On Sept. 5 And 6

The third lamb pooling of the season, conducted by the Ashe county farm agent's department, will be held here next Thursday and Friday, Sept. 5 and 6, C. J. Rich announced this week.

Notices of the pooling have been mailed, together with a request from owners as to how many lambs they intend to enter in the pooling.

Mr. Rich pointed out that prices paid in the two previous poolings have been very good.

140 Families In County Register With Red Cross

Rehabilitation Assistance To be Given Flood Sufferers, By The Red Cross.

DEADLINE NEXT WED.

A total of 140 Ashe county families who suffered flood losses have registered at the Red Cross headquarters here for emergency assistance and general rehabilitation, a check up yesterday revealed.

The closing date for registration is next Wednesday, September 4, and all families in the county desiring flood relief assistance are urged to register before that time. Miss Ann Lindsey, of the National Red Cross in charge of flood disaster relief here, stated.

The Red Cross headquarters are located in the community building and Mrs. Hoyt Wood is on duty all day.

Miss Lindsey and Mrs. Elizabeth Koeppe, of Richmond, Va., Red Cross worker who arrived a few days ago, are out in the county making surveys.

Tuesday E. S. Brown, Red Cross building adjuster was here and made several inspections.

All emergency food and clothing orders are now being placed through the Surplus Commodity program of the Welfare Department. No more direct purchase orders are being given by the Red Cross.

All work is now being directed towards general rehabilitation, including replacement of destroyed homes, etc.

Ram Exchange Day To Be Held Here Sept. 12th

All Sheep Growers Invited To Bring a Ram. May Have Some For Sale.

A new activity of the Ashe farm agent's office will be held here on Thursday, September 12, when a Ram Exchange Day will be staged.

The Ram Exchange will be held at the West Jefferson stock yards, starting at 1:30 p. m.

"It may be possible to have a few rams there for sale," Mr. Rich stated. "But come and bring your ram . . . let's make our Ram Exchange Day a big success."

As a word of caution, the county agent urged, "Don't forget that a good ram is of prime importance if good lambs are to be produced. Remember that if you wish good breeding ewes, it may be advisable to keep a few good ewe lambs to replace old ewes or to increase your breeding stock."

Everybody is invited to attend the Ram Exchange.

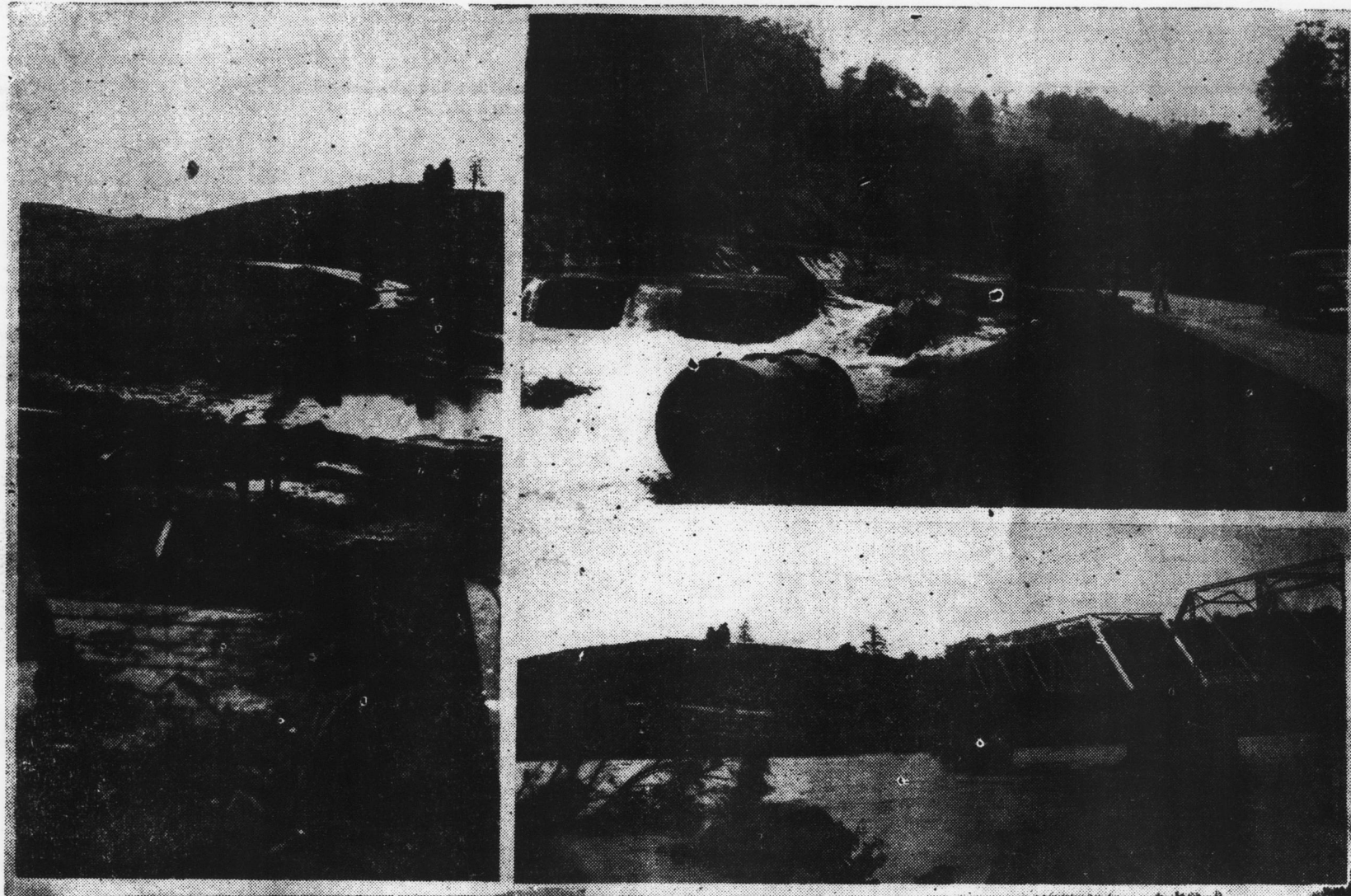
Nazis Continue Air Raids; Rumanians Clash With Reds

The battle of Britain continues with Adolf Hitler's night flying raiders persisting with "insomnia raids" on London. But the Berlin residents have also had a taste of what sleep losing means this week to the tune of British bombers overshadowing their city.

At least 20 cities and towns of England early yesterday were under attack by German planes which swept across the coast in waves and were hurled back from central London when anti-aircraft gunners walled the metropolis with a deadly circle of fire.

But the war attracted Germany's attention elsewhere. There is trouble in the Balkans. Bitter fighting on land and in the air between Russian and Rumanian forces and clashes along the frontier with Hungary were followed Wednesday by reports of massive German and Soviet

More Pictures Of Ashe County's Disastrous Flood



Sweeping flood waters of two weeks ago wrought much destruction to homes, barns, bridges, highways, crops, gardens and railroad in Ashe county. The above pictures were made on Wednesday morning, Aug. 14. The views at the left and bottom show what happened to the high Crumpler bridge. At the top, right, shows how the Hamby power mill and dam at Warrensville was destroyed. (Photos by Staff Photographer.)

NEW ASHE SHERIFF



Meet the new Ashe county sheriff, J. Everett Roland! He is a much better looking man than this photo indicates. The staff photographer had to catch him in a hurry, because the Sheriff is quite a busy man now.

MAYOR'S COURT IS LIGHT THIS WEEK

Only two cases were tried before Mayor H. C. Tucker here on Monday morning, as all others were continued.

Burford Hardin was sentenced to four months on the roads for selling liquor. O. B. Lambert was taxed with \$10 and the costs for wreckless driving and public drunkenness.

Missionary Baptist Group Meets Here Fri., Sat., Sun.

Lights Cut Off By Wreck Sun; Others Reported

Cars Badly Damaged But Occupants Escape Injuries In Most Cases.

The lights were literally put out late Sunday afternoon by an accident which occurred between the two Jeffersons, just beyond Badger's, when a car driven by Grover Franklin, member of the state highway forces cut down a telephone pole and cracked a light pole.

Riding with Franklin in the car was Russel Griffith, another member of the state highway force, Bertha Woodie and May Price, of West Jefferson. The men both received bruises and scratches and the women were carried to the hospital. It was found that Miss Price only received minor injuries while Miss Woodie sustained a broken cheek bone. She is still in the hospital. The car was badly damaged. Observers said the slick pavement and the rate at which the car was travelling caused it to leave the highway. The lights were immediately put back into service by the power company repairmen.

Mont Jones was painfully injured about the head late Sunday night when he failed to see a washout in the Roan's Creek road and ran into it, damaging his car as well as receiving cuts and bruises about the face.

Dick Phillips, of Idlewild, manager of the produce department at Smithey's, made a new record for himself Saturday night when he failed to see a highway warning in time to stop, when returning home. His car was turned over and was slightly damaged, however, he escaped with a few scratches. He said that he had been driving for 17 years and that this was his first accident.

Late Tuesday afternoon a car driven by Evan Miller, near Todd, left the road and travelled some distance down the steep incline at Laurel Knob Gap. The car was badly damaged while the occupants of the car were reported frightened, but practically unhurt.

Mrs. Cline, nurse, of Statesville, sustained slight damages to her car but no personal injuries when she lost control of it Sunday afternoon, on the Nathan's Creek road, due to the wetness of the pavement.

Good Attendance Is Expected. Association Has 4,002 Members, 46 Churches.

Plans are now being perfected for the fifty-fourth annual session of the Ashe Missionary Baptist Association which convenes at the West Jefferson Baptist church on Friday, Saturday and Sunday, Aug. 30, 31, and Sept. 1, when a large group is expected to attend.

The meeting will open at 9:45 on Friday morning and following the devotionals by Rev. R. C. Ashley, of Bina, Rev. W. T. Whittington will preach the opening sermon. After the Moderator's period a number of reports will be heard before lunch. Other reports will be heard Friday afternoon and the sermon will be preached by Rev. W. E. Denny, of Grassy Creek.

Saturday morning, Rev. G. C. Burkett will open the meeting with the devotionals a number of reports will be heard and Rev. J. O. Spencer, of Grassy Creek, will preach.

Saturday afternoon in addition to several other reports, the report of the committee on resolutions, the time and the place for the next meeting will be heard. The sermon will be preached by Rev. S. S. Graybeal, of Creston. On Sunday Rev. Jess Shomaker, of Grassy Creek will preach.

The fifty-fourth annual session (Continued on Page Eight)

ASSOCIATION HOST



Rev. W. T. Whittington, pastor of the West Jefferson Baptist church. The Ashe Missionary Baptist Association meets here this week end and Mr. Whittington is busy making final preparations for the annual session.

Bishop Gribbin Coming Sunday

The Rt. Rev. Robert E. Gribbin, Bishop of Western North Carolina will be at Holy Trinity Church, Glendale Springs, for evening services and Confirmation Sunday, September 1st, at eight o'clock in the evening. This is Bishop Gribbin's annual visitation.

Mountain Union Baptists To Hold Annual Session This Wk. End Near Grayson, N. C.

The 74th annual session of the Mountain Union Baptist Association composed of messengers from the regular Baptist churches in the union, will convene with the Covenant Regular Baptist church near Grayson, N. C., tomorrow, Saturday and Sunday.

Elder G. W. Campbell, of Hemlock, was scheduled at the last session to preach the introductory sermon and Elder W. W. Hart, of White Top, was chosen as alternate.

Elder James Barker, of Troutdale, Va., is moderator and E. W. Stansberry, Lansing, is clerk.

There are 24 churches in the Association and the total membership is 1,350, according to reports of minutes of the last session. The churches are: Baptist Chapel,

Baptist Union, Baptist View, Beech Creek, Covenant, Flat Grove, Fox Creek, Holston River, Laurel Hill, Liberty, Mahalas Chapel, Mt. Pleasant, Mt. Zion, New Bethel, New Hope, New Bridge, Oak Grove, Pine Grove, Pleasant Home, Rich Valley, Silas Creek, St. Clairs Creek, Three Top and White Oak. St. Clairs Creek, Three Top, Pine Grove and Baptist View have the largest membership.

The 1939 minutes listed the following elders: C. L. Barker, Troutdale; James Barker, Troutdale; John Blevins, West Jefferson; G. W. Campbell, Hemlock; L. C. Craven, Chilhowie; G. C. Delp, Darlington, Md.; John Eller, Chilhowie; E. F. Harmon, (Continued on Page Eight)

Roads Open To N. Wilkesboro And To Lansing

To Open Grassy Creek Road Wed. Idlewild Highway Is Also Open.

FOUR BRIDGE CREWS

Splendid progress is being made on the restoration of roads, bridges and the railroad track in Ashe county, reports yesterday indicated.

In record-breaking time, a temporary bridge was constructed over New River between Jefferson and Glendale Springs and this important highway to North Wilkesboro was opened to traffic late last Friday afternoon. The bridge is limited to eight ton capacity and all traffic to Boone, Tennessee and Southwest Virginia is being routed over it and through the Jeffersons.

Yesterday afternoon work on the bridge at Bina was completed, thus opening traffic to Lansing, Tuckerdale and that section of the county.

Start Work At Crumpler
Repair work will commence this morning on the Crumpler bridge and is expected to be finished by next Wednesday morning. Captain George Doggett stated yesterday.

The low water bridge from West Jefferson to Idlewild has been repaired and is now open to traffic.

Work on the river bridges to Obids, Nathan's Creek, Weaversford and Silas Creek will begin as soon as possible. Captain George said.

There are four bridge crews at work in the county, and assigned to highway improvement and repair, are the 101 prisoners and many WPA workers. The WPA forces have been working primarily on washed-out roads. No special increase in WPA rolls has been authorized, however, to take care of the emergency condition.

Various roads in the county that have been opened include: the Buffalo road, Phenix Creek to Bina, Three Top, Tuckerdale to Lansing, Big Helton, one way. Good progress is being made on grading and top-surfacing the Lansing-Helton road. This is expected to be completed this fall to Sturgills.

Rail Service Sept. 15
Working on both ends and in the middle, several crews are rapidly rebuilding the N & W railway tracks. It is estimated that train service will be resumed by September 15th.

"We were certainly hit hard in this county and we are doing all we can to open every road just as soon as possible," Captain Doggett stated yesterday.

Reins Promoted To Major Rank National Guard

North Wilkesboro, Aug. 27.—Ralph R. Reins, for many years captain in command of the National Guard in North Wilkesboro, has been promoted to the rank of a major.

He succeeds Major Person C. Phillips, of Durham, who resigned, and will be in command of three companies, North Wilkesboro, Salisbury and Morganton.

JOE GISH



BUT IT'S BETTER 'T BE A BUS BEEN THAN A NEVER WUZ