

Mining Property Bought By Lassiter For \$34,000

Merchants Want Agriculture In County's Schools

Value And Need Of Vocational Training Is Seen By W. Jefferson Merchants

A large number of West Jefferson merchants expressed themselves as being very favorable toward the establishment of vocational agricultural departments in the high schools of the county this week when interviewed by a Post reporter.

"From the way I see it, I cannot emphasize the importance of vocational agriculture strongly enough," T. E. Parker said. "The whole purpose of education is to better equip youth for service and certainly we need to train and encourage our boys to stay on our farms," he added.

John Rhodes pointed out that he had long been interested in education from a practical standpoint and that he felt that vocational agriculture was not only practical but "is badly needed in Ashe county."

Sharpe S. Shoemaker, said that he knew such training would be profitable to the county and that he hoped vocational agriculture could be started now. "We need more good farmers to help win the war," he said.

"I am heartily in favor of vocational agriculture and know the establishment of such departments would mean much to the youth and to this county," Dwight McGrady, said.

A number of other individuals have expressed themselves as being strongly in favor of such training in the Ashe schools.

(Continued On Page Four)

Valuable Ashe Farm To Be Sold

Auction Of Dr. Gentry Or Vail Farm Will Be Held Next Wed., June 16

The Dr. Gentry or Vail farm, on the Grassy Creek highway, six miles north of Jefferson, is to be sold at public auction on Wednesday, June 16.

This farm, owned by J. L. Seagraves and R. B. Jackson, contains 265 acres and is subdivided into a number of tracts. Most of it is in cultivation and the sale is expected to attract a large crowd.

In addition to the excellent farming land, on the place is located a good nine-room house, barn, outbuildings and tenant house.

The sale is to be conducted by the Cumbo Land Company, of Abingdon and is scheduled to begin at 10 o'clock in the morning and it has been announced that fifty dollars will be given free.

McNEILL PROPERTY IS SOLD SATURDAY

At a sale of some of the property belonging to the estate of the late E. A. McNeill, held Saturday, the home place in Jefferson was bought by C. R. Goswick for \$1800.

The highest bid on the farm property in and near Jefferson was placed by R. C. Parsons, of Raleigh. This was \$4,340.

"SEASONED TIMBER", NEW SERIAL STORY

People, typical of a small town, are cleverly portrayed in the new serial story, "Seasoned Timber", opening today in this paper.

But more than that, the story is filled with human interest and a romance, which will surprise you.

In it you will find that a school principal has plenty of worries, but in "Seasoned Timber", they are overcome.

The author, Dorothy Canfield, well-known to many readers, has written this story so that it will interest everyone.

Turn to page 7 and start with the first chapter. You won't want to miss a single issue.

Jap Flag Gone, Old Glory Up



The American flag waves from a Japanese landing boat which American forces captured while fighting on Attu. They are beaching the boat at Massacre bay.

Invasion Of Europe Believed Near; U. S. Air Force Is Active

Reds And Germans Swap Mighty Blows; Germany Is Warned Against Using Gas

War activities in the air continued on a big scale this week, while the world waited for the news of the invasion of Europe by allied forces.

Winston Churchill, as though raising at last the bright signal that will send the invading allied armies plunging forward, quietly told the world yesterday that amphibious attacks of "a peculiar complexity and hazard on a large scale" were very near at hand in the European theater—operations already "fitted into their proper place in relation to the general war."

Italy's anti-invasion outpost at Pantelleria, 180 miles from the Italian mainland, underwent violent air attacks again yesterday and it was disclosed that American fighter bombers have a novel technique to blast the enemy from underground hideouts in the island's volcanic mountains.

For the second time in three days, Japan's South Pacific air force suffered a severe defeat at the hands of American airmen Monday, the navy reported yesterday. In a battle giving fresh evidence of qualitative superiority.

(Continued on Page 4)

Avery Eldreth Buried Monday

Funeral service was held on Monday for Avery Eldreth, 51, of Lansing, who died on Sunday, June 6. Burial was at the family cemetery. Rev. Carl Sturgill was in charge of the service, which was held at the Long Branch Baptist Church. He is survived by his wife and the following children: Glenn, Jones, Gladys, Smith and Gene, all of Lansing.

W. B. Austin Is Rotary Speaker

Stressed Need Of Vocational Agriculture In Schools Of County

W. B. Austin told the members of the Rotary Club last week that "we would be better fitted to help win the war and the peace in Ashe county if we had vocational training in our schools."

He pointed out that students were different and should be taught about the things they are interested in. "Since the majority of the young people of Ashe county are reared on the farm and interested in farming, we should have agricultural departments in our schools", he declared.

Langdon Scott had charge of the program. Roy Crouse is program chairman for the meeting tonight.

Bass Season Is Opened; Warden Issues Warning

Many Streams Are Well Stocked; Fishermen Must Buy Licenses

The bass season in Ashe county opens today and many of the streams are well stocked. Harve Goodman, game warden, says he expects this to be a record season for many fishermen.

Game Warden Goodman urges everyone to secure a license before attempting to fish. He pointed out that within the past few weeks, several had been caught, tried and fined for fishing without a license. "This can be both expensive and unpleasant," he said.

Mr. Goodman said he wished to remind everyone desiring to fish that licenses were available at hardware stores in W. Jefferson, at the office of the register of deeds, in Jefferson, and at various other places and stores throughout the county.

The opening of the bass season not only attracts local fishermen, but those from a distance, and this year is expected to be good.

Mrs. Brooks, 44, Is Buried Monday

Mrs. Rosa Brooks, of Tuckerdale, died at the age of 44 on Friday and was buried on Monday. Funeral service was held at the Baptist church at Tuckerdale. Burial followed at the family cemetery.

The deceased is survived by her husband, J. F. Brooks and the following children: Claude, Clyde, Doris, Ivalee, Billy and J. F. Brooks, Jr., all of Tuckerdale.

Dr. John S. Gaul Is Coming Wed.

Will Hold Crippled Children's Clinic At The Health Department

It was announced yesterday that Dr. John S. Gaul, of Charlotte, would be here next Wednesday afternoon to hold a crippled children's clinic. Those interested in attending and have not done so, are asked to get in touch with the health department.

The eye clinic held last Thursday and Friday under the sponsorship of the health and welfare departments and the Rotary club, was well attended.

Ashe Wool Pool Brings 56 Cents; Points Named

Farmers Urged By County Agent Crouse To Take Advantage Of Pool

The Ashe county wool pool was bought by Chatham Manufacturing Company, Elkin, for 56 cents per pound. "This is the top price paid for wool this year," Roy H. Crouse announced this week.

Wool is to be brought to one of the following points to sell through the pool, Mr. Crouse explained:

R. J. Yoder's store at Lansing—Monday, June 14 from 9:00 a. m. to 11:30 a. m.

W. R. Osborne's store at River-view School—Monday, June 14 from 1:00 p. m. to 5:00 p. m.

West Jefferson, back of the Ashe Hardware Warehouse—Tuesday, June 15 from 8:30 a. m. to 11:30 a. m.

"Those who live near Grassy Creek may prefer to bring their wool to Virginia-Carolina school and those near Laurel Springs may prefer to bring their wool to Laurel Springs Post Office a few days later which will be announced when the Alleghany and Grayson counties get their schedules complete. These counties are selling in the same pool with us, Agent Crouse said.

"Don't neglect getting your wool in the pool as we are making a special effort to assist you in getting the most money for your clip," he added.

Name Ashe War Meat Committee

Division Of County War Board To Assist With Meat Problems

Recognizing the pressure of the increasing work load of the county War Boards and in order to secure the assistance of necessary volunteer workers, the State War Board requested the county organizations with the assistance of the area marketing supervisors to establish a County War Meat Committee.

The following have been asked to serve: Roy H. Crouse, chairman; A. B. Vannoy, T. E. Parker, Harry F. Webster, Carl Colvard and Mrs. Ed M. Anderson.

Lee Goodman, 79, Buried Tuesday

Funeral service was held Tuesday morning for Henry Lee Goodman, 79, of Nathan's Creek, who died on Monday, June 7. The service was held at the Liberty Hill Church with Rev. Worth Sweet in charge.

Mr. Goodman, who has been ill for some time, is well known all over the county. He is survived by his wife, Mrs. Mary Ann Goodman, of Nathan's Creek, and the following sisters and brothers: Mrs. M. A. Deacon and Mrs. Maggie Long, of Nathan's Creek; Mrs. Jennie Bobbin, Lenoir and Mrs. Julia Walters, West Jefferson; J. R. Goodman, Oval; B. H. Goodman, West Virginia; R. E. Goodman, Idlewild, and Walter Goodman, West Jefferson.

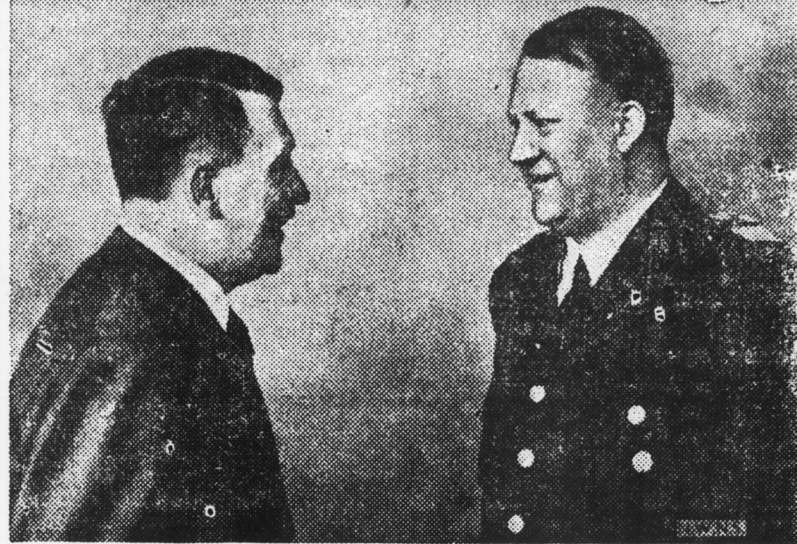
He reported a few years ago that he had attended 50 Big June services at Senter church, in succession. He had an excellent memory and was well known for his sense of humor, which won for him many friends.

BAPTIST CONFERENCE AT VALLEY HOME CHURCH

The Baptist Workers' Conference met at Valley Home Church on Sunday, June 6, and had a fine program. The subject was, "Go ye into all the world and preach the gospel to every nation." Those taking part were Rev. Eugene Phillips, Thy Allen and Frank Pierce. The closing sermon was by Rev. S. S. Graybeal.

The B. W. C. will meet again the first Sunday in July at the Baptist Home Church. Everyone is cordially invited to attend.

Judas Sees His Master



A photograph from a Nazi propaganda magazine shows Vidkun Quisling with Adolf Hitler at the latter's headquarters for a conference.

Ashe Commissioners Want Agriculture In Schools Of County

Good Crowd Is Expected For Big June Meet

To Be Held On Saturday And Sunday; Elders Are Announced

Saturday and Sunday the annual Big June meeting will be held at the historic Senter Baptist church at Nathan's Creek, when several hundreds of people are expected to gather.

Elders Ed Davis, moderator of the Senter district will preach as will Elder D. G. Roten, Elder Webb Kilby, Welch, W. Va., and Elder J. A. Fagge, of Winston-Salem. There will possibly be other visiting elders who will take part in the service.

In spite of gas and tire rationing a good crowd is expected. Before travel was curtailed, as many as 5,000 people from near and far often attended.

The Big June is the first of the two-day primitive Baptist meetings to be held in this section during the summer and has for more than three-quarters of a century attracted a large crowd.

Mrs. Brinegar Buried Yesterday

Funeral service was held yesterday for Mrs. Mary Lular Brinegar, 63, of Grassy Creek, who died at the Ashe Hospital on Monday, June 7, after an attack of pneumonia. Rev. Edgar Denney, Rev. Estel Eller and Rev. Lester Denney were in charge of the service, which was held at the Pleasant Valley Baptist church at two o'clock p. m.

The deceased is survived by her husband, J. R. Brinegar; three brothers, E. W. Phipps, Grassy Creek; Emmett Phipps, Bina and R. F. Phipps, Troutdale, Va.

OPA Orders Meat Prices Cut Back, Starting June 21

Washington — A reduction in meat prices, averaging three cents a pound below current retail quotations, has been ordered by the Office of Price Administration in its second step toward "rolling back" the cost of living by means of subsidies.

The meat slash will go into effect in retail stores June 21 for all cuts except cured and processed pork, OPA said. For pork products the reductions become effective July 5.

OPA's action was taken in the face of a decision by the House Banking Committee to forbid payment of subsidies by the Commodity Credit Corp., and a protest against them by the American Meat Institute. This organization of packers asked post-

Tentatively Agree To Assist With Salaries Of Vocational Teachers

The Ashe county commissioners tentatively agreed to include the county's part of the salaries of two vocational agricultural teachers in the budget this year, at the regular meeting this week, when the matter was put before them.

An impressive delegation from the Jeffersons Rotary club, including representatives of the board of education, The Skyland Post and other groups pointed out the need and importance of vocational agricultural departments in the high schools of the county.

The commissioners expressed themselves as being in favor of such departments if the county's part could be financed without increasing the tax levy.

It is believed that this can be done since the county has an increased valuation of around \$170,000 which would give an increased income of \$3,400.

Arrangements will have to be made by the board of education and the schools in which the departments are to be located to house and equip the departments, it is understood.

The action of the county commissioners has already been commended.

(Continued on Page 5)

AWOL Soldier Is Held In Jail

Pvt. Murray L. Boyd found himself in double trouble here over the week end. When he was arrested for public drunkenness, it was found that he had over stayed his leave from a camp in Texas.

Boyd, who is originally from Mt. Airy, is being detained in the county jail until directions for his removal are received from Army officials.

Purchases Farm From T. K. Miller Joining Ore Knob

Joins Ore Knob Property Bought By Lassiter Early This Year

The 700-acre farm belonging to Ex-sheriff Tom Miller in the Ore Knob section of Laurel Springs, was purchased this week by R. G. Lassiter for the sum of \$34,000.00, according to reliable information revealed here, today.

This property joins the Ore Knob copper mining property, which was purchased by Lassiter early this year for \$36,000.00. This tract included 1000 acres.

While surveys have been made of the mine this year, no date has been announced for starting active operation of it. It is believed, however, that since this additional property has been purchased by Mr. Lassiter, that he expects to operate the mine.

The Ore Knob mine, operated from time to time, has been idle since World War I except for the machinery used by the highway department for crushing surface ore for the highway.

The mine saw its greatest period of activity immediately after the Civil war. From 1880 to 1888 when there were around 1000 men employed. But the mine was closed and then reopened again in 1907. It was also operated on a small scale during the past World War.

(Continued on Page 5)

Men Classified By Local Board

Several Are Placed In 1-A; List Of Group Is Published Below

The local board has recently classified a number of men for military service.

Those placed in 1-A are as follows: Alonza Black, Thomas Lee Garvey, Claude Mack Blevins, Robert Thomas Graybeal, Kenly Lyles, James Garfield Ham, Wayne Miller, Flournoy Efton Cleveland, Robert Bruce Little, Avery Lewis Darnell, Raleigh Scott Greer, Dare W. Dickson, Eugene Greer Edwards, Marvin Lee Perry, Hildred Joseph Roark, Holman Eugene Farmer, Walter Raymond Sapp, Earl Clay Barker, William Edgar Bledsoe, Samuel Ernest Sluder, Walter Ray Rutherford, Blain Bladen Severt, James Earl Blevins, Robert E. Lee Jones, Gentry Pennington, Roy Huston Bare, Roscoe Guy Lyalls and Dewey Blevins Campbell.

2-B—Homer Sell Gentry; 2-C—Samuel Claude Dancy and Clarence Floyd Blevins; 4-F—Odell Willie Carter, Burl Carlton Fowler, Delmer Joseph Mahala and Ralph Roe.

SERVICES AT ST. MARY'S AND GLENDALE, SUNDAY

It was announced this week that Rev. W. C. Leach would conduct services at the Episcopal Mission at Glendale Springs on Sunday morning at 10 a. m. and at St. Mary's church at Beaver Creek on Sunday afternoon at 4 o'clock. The public is cordially invited to attend.

ASHE EXPERIENCES SUMMER WEATHER

The mercury reached the highest peak of the season this year on Sunday here, when the thermometers soared to 87 degrees, according to official readings.

This was the warmest day of the summer, but was comparatively cool, as it was well over 100 degrees in other sections of the state and nation.

A thunderstorm followed by rain and wind on Sunday evening, cooled the temperature, which has remained pleasant this week. Frequent showers have helped to lower it.

The rain and sunshine this week have done much to improve crops of this section. "It is a real growing season", one farmer remarked yesterday.