



The Skyland Post



VOLUME 15, NO. 23 \$2.00 a Year in Ashe County WEST JEFFERSON, N. C. THURSDAY, JUNE 7, 1945 \$2.50 a Year Out of County PUBLISHED EVERY THURSDAY

SUPERIOR COURT CLOSED TUES.

Guernsey Sale Expected To Draw Crowd Saturday

Many Of State's Best Herds Will Be Represented

20 Registered Animals To Be Sold At Auction; Prizes To Be Awarded

A large number of dairy farmers from this area as well as others, are expected to attend the purebred Guernsey cattle sale to be held here on Saturday, when animals from some of the best herds in the state will be entered.

The sale will be sponsored by local business men in cooperation with the North Carolina Guernsey Breeders Association, N. C. Extension Service and local milk companies.

This is the second event of its kind to be held in the county and due to the interest shown in the initial sale last fall, this sale Saturday is expected to draw a large crowd of dairymen and others interested in the improvement of the dairy program through better breeding. The sale will open at 12:30 promptly at the shed of the Farmer's Bean and Vegetable Market.

"Around 20 heifers will be consigned from a number of the most outstanding herds in North Carolina. These animals will be sold at auction and it will be a wonderful opportunity for Ashe county dairymen to get some fine animals with high production records," an official said.

Each of the 20 participating companies will each give away a pure-

Two New Churches Will Be Dedicated By Bishop, Sunday

POST COMMANDER



L. B. Tyson, newly elected commander of the Ashe County Post 171 of the American Legion, is to be installed at the meeting on Saturday night when district officers will be present.

Legion Officers To Be Installed Here Saturday

District and State Officers Are Expected To Be Present For Service

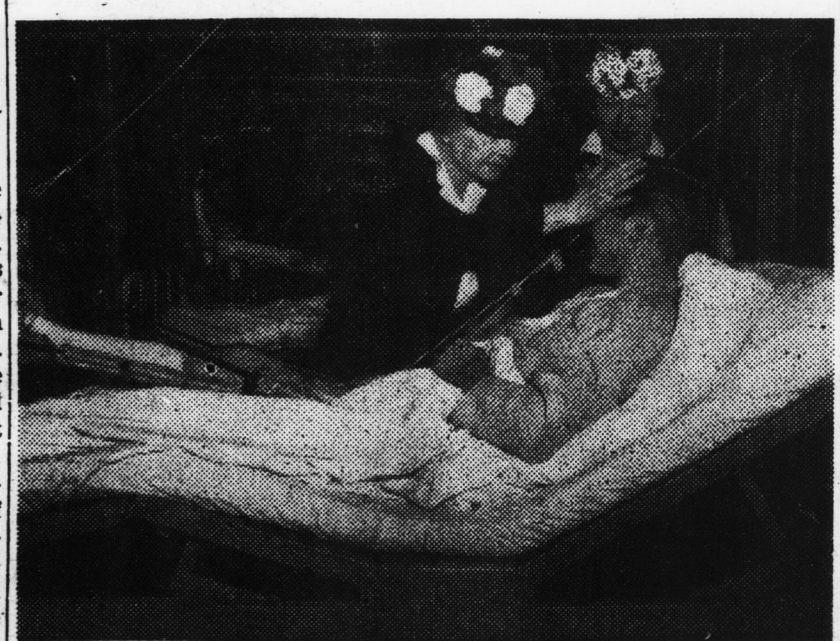
L. B. Tyson, newly elected commander of the Ashe County Post 171 of the American Legion, along with other new officers will be installed at the meeting on Saturday night here, when Vice-department Commander Scarr Morrison, of Statesville, and District Commander Louis Nelson, of North Wilkesboro, are expected to be present and speak to the group.

W. W. Terry, outgoing commander of the local post, has issued a special invitation to all ex-service men of both World War I and World War II to be present. Following the business sessions there will be a joint meeting of both the Legion and Auxiliary when some special entertainment has been planned.

Commander Terry announced that all American legion posts in North Carolina have exceeded their last year's membership and that most posts have exceeded the last four years average.

(Continued on Page 4)

Miss Helen Keller Visits Ashe Man



Helen Keller, world-famous deaf-blind leader, visits Pvt. Marvin E. Osborne, formerly of Lansing, at the Finney General Hospital, Thomasville, Ga., where he is receiving treatment for wounds received in action in France. With Miss Keller is Polly Thompson, her companion.

RIVERVIEW PASTOR



Rev. J. R. Short, pastor of the Riverview Methodist Church, where dedication services will be held on Sunday.

Need For Buying Bonds Is Stressed At Meeting Mon.

Total Sales In County Near \$150,000; Quota For Drive Is \$235,000.00

The need and importance for buying more and more war bonds was stressed at an enthusiastic meeting here on Monday evening, when W. H. Neal, district chairman and Lt. Olin D. King spoke to a group of workers and interested individuals.

Mr. Neal, vice-president of the Wachovia Bank and Trust company, pointed out the continued

County Tax Rate Again Set At \$2 By Commissioners

Tentative Budget Is Presented At Meeting Held On Monday

Following the presentation of a tentative budget for the coming fiscal year, the Ashe county commissioners at the meeting on Monday, again set the tax rate at \$2.00 per hundred.

The tentative budget called for an overall total of \$227,000.00, it was explained. This will be published in detail as soon as slight necessary revisions are made, it was pointed out.

A number of other routine matters were handled by the commissioners at the meeting.

Rationing Guide

- MEATS AND FATS**
Book Four red stamps E2 through J2 good through June 30; K2 through P2 good through July 31; Q2 through U2 good through Aug. 31; V2 through Z2 good through Sept. 30.
- PROCESSED FOODS**
Book Four blue stamps N2 through S2 good through June 30; T2 through X2 good through July 31; Y2, Z2 and A1 through C1 good through Aug. 31; D1 and H1 good through Sept. 30.
- SUGAR**
Book Four stamp 36 good for five pounds through Aug. 31. Next stamp valid Sept. 1.
- SHOES**
Book Three airplane stamps 1, 2 and 3 good indefinitely. OPA says no plans to cancel any. Next stamp valid Aug. 1.
- GASOLINE**
15-A coupons good for four gallons each through June 21; 16-A coupons become valid June 22 for six gallons each. B-6, B-7, C-6 and C-7 coupons good for five gallons each.

Jap Resistance On Okinawa Near End; Invasion Predicted

Heavy Attacks From Air On Japanese Mainland; Anniversary Of D-Day Noted

A complete news blackout on the swift American operations on Southern Okinawa hinted at important developments as Japan, losing important ground on manifold war fronts, frankly expressed fears of a homeland invasion.

Adm. Chester W. Nimitz strangely omitted all mention of Okinawa ground activity in a delayed communique which told only of scattered aerial blows against Nippon.

This extraordinary omission was taken to indicate a later announcement might be forthcoming on the expected end of organized resistance on the important island. The Japanese at last reports were being compressed into the small southern tip of the island and were losing their grasp of the huge Naha airfield, best in the Ryukyus.

Japanese invasion jitters flared anew as Tokyo radio acknowledged that Nippon's war situation on Okinawa was "most critical." The Japanese news agency Domei reported Tokyo newspapers were agreed that "unmistakable signs point to the enemy's intention to invade the Japanese mainland" in due course of time.

Domei warned loss of Okinawa, only 325 miles south of Japan proper, would mean intensification of American raids on the homeland.

One year ago Tuesday night, a picked army of American and al-

Bible School To Open Here Mon.

A Vacation Bible School will open at the West Jefferson Baptist church on Monday, June 11, at 9:45 a. m., under the direction of Miss Virginia Dare Teague, it has been announced.

The following group of teachers have been chosen: Beginners department, Miss Edith Lovette and Miss Jackie Woodie; primary department, Mrs. Randall Woodie and Miss Pauline Bare; junior department, Miss Virginia Dare Teague; intermediate department, Miss Betty Cornette; music department, Mrs. E. W. Powers and Miss Dorothy Dean Campbell.

All children in the community are cordially invited to attend the Bible School, regardless of their denomination.

KILLED IN ACTION



Pfc. George Coolidge Holman, son of Mr. and Mrs. G. S. Holman, of Todd, was killed in action in Germany on April 9, according to a recent message received by his parents, from the War Department.

H. D. Club Women Of 7 Counties To Meet Here Tues.

State Officials Will Attend; Plans For Coming Year To Be Outlined

Representative home demonstration club women from seven northwest North Carolina counties are expected to attend the district meeting here next Tuesday, when state and district leaders will discuss plans for the coming year.

The meeting, which will open at 11:00 o'clock, will be held in the West Jefferson Methodist church, Miss Doris Whitesides, Ashe county agent in charge of arrangements, announced. Counties to be represented in addition to Ashe, include Alleghany, Alexander, Avery, Caldwell, Watauga and Wilkes.

Following the business session and group discussions, Miss Ruth Current, State Home Agent, will lead the discussion on plans for 1946. Miss Anna Rowe, district agent, will also speak as will Mrs. Edison Davenport, president of N. C. Home Demonstration Clubs. A luncheon will be served at (Continued on Page 4)

Appeal Taken In Tax Suit; Judge Alley Presides

Several Cases Non-Suited; Will Of J. C. Williams Is Upheld

Ashe county superior court for the trial of civil cases which opened on Monday, May 28, with Judge Felix Alley presiding, came abruptly to a close on Tuesday afternoon, when settlements were reached in a number of cases and others were non-suited.

No conclusion was reached in the case of Mrs. Dora Wyrick vs. N. B. Smithey. Attempts to non-suit the case were brought out. Mrs. Wyrick had instituted a damage suit of \$25,000.00 for injuries sustained.

The tax suits of H. M. Miller vs. W. E. McNeill were appealed by McNeill to the Supreme Court. Attempts to break the will of J. C. Williams proved to be unsuccessful.

In the case of Mrs. James H. Scott vs. James Scott, the former was awarded judgment of \$500. No agreement was reached in the case of R. L. Ballou vs. Mrs. (Continued on Page Four)

Badgers Move To New Location

New Home Is Former Goss Property Across From Community Building

Badgers' funeral home and burial association this week moved into a newly purchased location across from the community building. The new home of one of Ashe county's oldest concerns is located in the building formerly occupied by Mrs. Laura Goss.

"We are happy to move here where we have more room, not only in the building, but where traffic conditions are less congested," Roy Badger said. Officials of the firm said that when the newly purchased building is remodeled plans for it will include a small chapel, where services can be held.

Another feature of the building will be a museum. Here a number of interesting relics of World War I and World War II, in which members of the family have served and are serving, will be shown as well as other historical souvenirs.

"We will be happy for everyone to visit our new location and see our collection of relics," Guy Badger said.

Gives Schedule For Chautauquas

The Rev. John W. Luke, pastor of the Glendale Springs group of Presbyterian churches, has announced the following Christian Chautauqua dates that have been set for the summer:

The Rev. Tracy Miller, of Manley, is conducting the services at Bethel church, which is located just over the Wilkes county line. This meeting will close on June 13.

The chautauqua at Low Gap Presbyterian Church will be held from June 15 to June 26.

The Rev. Marion Bradwell, pastor of the Reynolda Presbyterian church, Reynolda, will conduct the services at Peak Creek Presbyterian church from June 28 to July 10.

Services at the Glendale Springs church will be held from July 12 to July 22.

The Rev. C. C. Crawford, pastor of the Forest Hill Presbyterian church, Richmond, Va., will assist the pastor at Laurel Fork, from August 5 to 14 and the Rev. W. T. Smith will conduct the services at Ebenezer from August 16 through August 26.

The visiting preachers who will conduct the services at Low Gap and Glendale Springs will be announced later, Mr. Luke stated.

Nation Facing Another Cut In Food Supplies This Year

Washington — Civilians must expect a 25 per cent cut in their canned food and vegetable supply within the next 12 months, War Food administration officials disclosed this week.

The prospective slash from the 1944-45 allocation is based on these facts:

1. Stocks on June 1 were smaller than a year ago.

2. Civilians will get a smaller share of produce canned from the 1945 production.

Stocks of commercially canned fruits, which must last until the new pack is available, will continue slightly below last year's very short supply. On June 1 the quantity of canned vegetables, except baby food and soups, was only half the civilian supply on the same date last year.

The foreseeable civilian share of canned fruits from the 1945 canning season is 20,000,000 cases compared with 26,000,000 a year ago. As for vegetables, ci-

vilians will be allocated only about 58,000,000 cases compared with 92,000,000 from the 1944-45 pack.

OPA Administrator Chester M. Bowles said food price and rationing controls can be lifted quickly after the Japanese war is won. He expected sugar, however, explaining that sugar is expected to become scarcer. He said gasoline rationing would end with the end of the war.

The proposed civilian fruit allocation does not include citrus fruits and juices. The citrus canning year does not begin until Nov. 1. A division of supplies has not yet been made. The present supply is a little lower than a year ago.

A WFA survey of canned goods stocks in 225 trading areas was in almost direct contradiction of a report made public by Sen. Elmer Thomas (D-Okla.) earlier this week.