

Drive Safely  
You May  
Save A Life

# The Skyland Post

ASHE COUNTY IS...  
Leading Livestock and Dairy  
County in North Carolina  
Population: 22,684

VOLUME 18, NO. 44

\$2.50 a Year in Ashe County

WEST JEFFERSON, N. C.

THURSDAY, OCT. 30, 1947

\$3.00 a Year Out of County

PUBLISHED EVERY THURSDAY

## Tobacco Market Is Assured Of Buyers

### Tobacco Grading Demonstration Today And Friday

All Growers Invited To Attend; Schedule Of Places Announced

H. D. Quessenberry, county agent said that he wanted to again remind farmers to attend the burley tobacco grading demonstrations that are being held in the county today and Friday, when Mr. McDonald, government grader will be present to demonstrate the proper methods of grading.

The demonstrations will be held in the county today and Friday at the following places: Today at 9:30 a. m., Grady Cornett's, Creston (Brushy Fork road); 2:00 p. m., Wade Weaver's, Lansing (at barn opposite Coble plant); on Friday at 9:30 a. m., Sam Kilby's, Sturgills; 2:00 p. m., Lester Young's, Grassy Creek.

All burley growers are urged to attend these demonstrations.

### Little Attends Polio Meeting

Ashe County Chairman Visits Warm Springs, Georgia While On Trip

W. Glenn Little, Ashe county chairman for the drive to raise funds to fight infantile paralysis, was one of the many delegates of the eight Southern States to attend the meetings held at Atlanta, Ga., last week.

Friday, at the meeting presided over by Dr. Warren D. Cass, of New York, the group was told of the work that had been done to fight the disease and the work which is yet to be done to combat the disease was stressed. The nation's goal for next year was \$23,000,000 and North Carolina at \$750,000. Mr. Little pointed out that the county's quota would probably be doubled.

On Thursday, the North Carolina delegation, composed of 49 chairmen, visited the Warm Springs foundation. Dr. Robert L. Bennett, director of physical medicine at the foundation, spoke to the group on preventing disfigurements by early corrective treatment.

Thursday night, the North Carolina delegation heard Ralph McDonald, N. C. State chairman at a dinner meeting. Each delegate also made brief reports. Mrs. Phillips Russell, secretary and State director of the organization was also present. Mrs. Little accompanied Mr. Little to the meetings.

### REA Is Planning Extension Program

The R. E. A. now serves 1,921 homes in Ashe county. Floyd Triplett, line foreman for the R. E. A., stated this week.

As soon as possible there are approximately 900 homes which will be reached through the R. E. A.

### GOVERNOR CHERRY WANTS FOOD SAVED

Raleigh — Governor Cherry has called upon North Carolina's citizenry to "cooperate to the fullest extent" with President Truman's food conservation program.

In a proclamation, the governor urged "every citizen to contribute to this effort by observing meatless, poultryless and eggless days; by saving bread and other wheat products and...

the governor had appointed the state nutrition committee to handle the food conservation program in North Carolina and he asked "all mayors and city managers in the state to organize food committees to assist the state nutrition committee in efforts to aid the distressed countries abroad."

## Work Started On New Theatre Bldg. On Main Street

AT JEFFERSON



### Preliminary Grading Started On Other Building Projects Here

Foundation work on the new theatre building to be erected on the former site of the Ashe motor company, next to the present theatre building, was started this week, and according to present plans, the new building will be ready for occupancy by April 1.

The new building is being erected by R. W. Barr and Ben G. Reeves and will be leased to the Alleghany Theatres, Mr. Barr announced.

He explained that it would be 50 x 125 feet in size and would seat 750 people. The new building will have new equipment throughout and will have a large stage suitable for stage shows, it was explained. Mr. Barr said that it would have a porcelain front similar to the Reeves theatre in Elkton.

Grading work was also started this week by John Weaver on the vacant lots beyond the Cash hardware building. Mr. Weaver pointed out that he expected to build a large building here suitable for a department store.

## West Jefferson Defeats Lansing; Ends Series, Sun.

Victory Of 6-1 Won By Local Ball Club; Season Officially Ended

The West Jefferson ball club captured the title of champions of the Mountain Baseball league before 1,500 spectators at Lansing, Sunday afternoon when they defeated the Lansing Cubs 6-1.

In a game where scoring was made possible through errors, the last official game of the season was played. The season would have officially ended last week when West Jefferson won a 13-5 victory over Lansing ending in a protest.

On the mound Sunday for the winners was Abe Miller, who struck out 4 and allowed 2 hits. Lefty Blevins was on the mound for Lansing, striking out 7 and allowing 5 hits.

Teams seemed evenly matched for the series, the Lansing Cubs having won first place easily in the first half of the baseball season. West Jefferson club won into its own in the second half as it battled to first place.

The winners were given \$55 and the losers, \$45. W. L. Hughes, president of the league stated.

Plans are now to honor the West Jefferson club, too president stated.

## R. L. Doughton Is Honored By Democrats On Saturday

Saturday afternoon, Democrats from the Ninth district in a rally, paid glowing tribute to Representative Robert L. Doughton for outstanding achievement and service to the people of the district, state and nation during his 37 years in Congress.

All nine counties were represented and numerous notable leaders were present and took part in paying tribute to the veteran congressman.

W. D. Kizziah, of Salisbury, opened the meeting in the Iredell courthouse about 1:30 p. m.

A victory banner presented by Congressman Doughton to the county for the largest majority, was awarded Iredell county, John Sharpe Hartsell of Cabarrus, presenting the award, which was accepted by John Long of Iredell.

Lieut. Gov. L. Y. Ballentine of Wake, spoke briefly, paying tribute to Mr. Doughton, asserting that he is still a young man, young in thought, young in spirit,

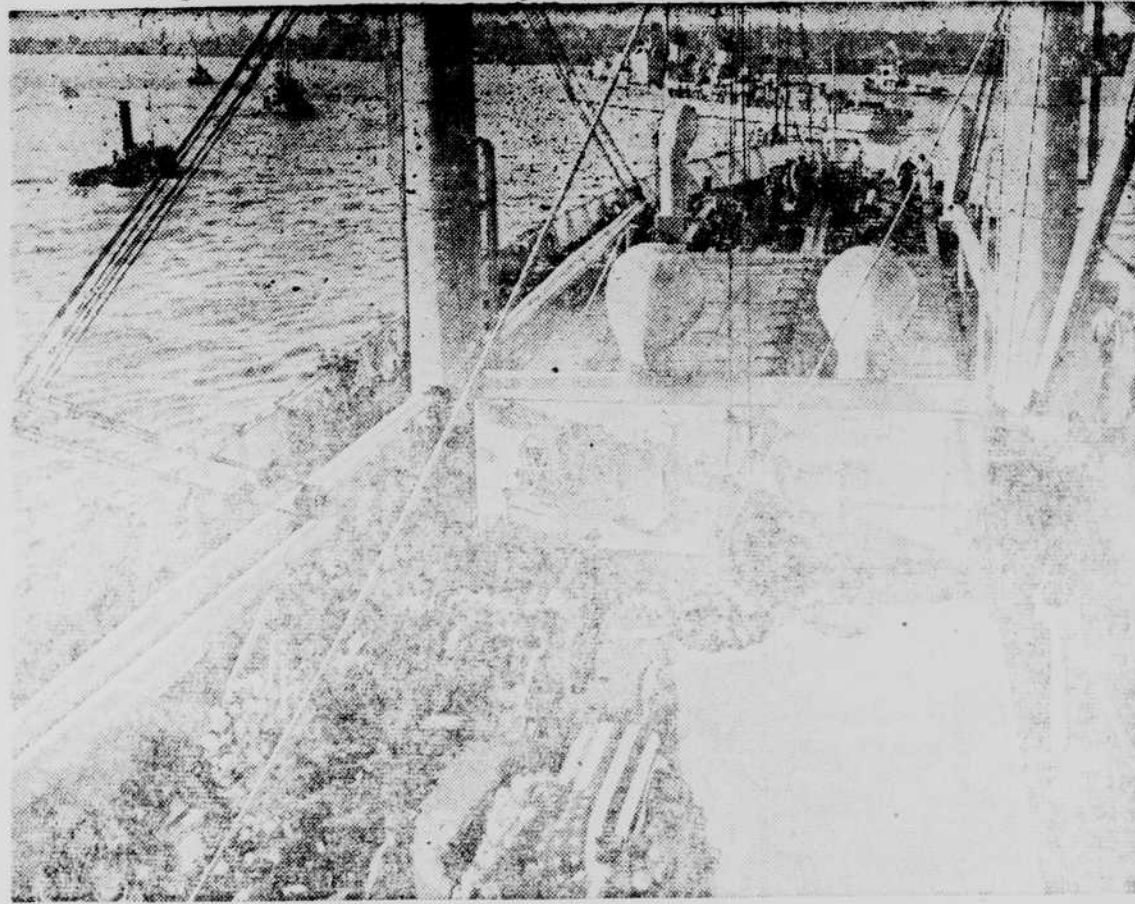
## Mrs. Shoemaker Buried On Mon.

Funeral service for Mrs. Cassie Shoemaker, who died in Burlington, was held on Monday at 2:00 p. m., at the Orion Methodist church. Interment was in the Colvard cemetery.

Mrs. Shoemaker, formerly of Ashe county, was the daughter of the late Mr. and Mrs. Hamilton Bare, of Wagoner.

She is survived by her husband, Dick Shoemaker and several children.

## Returning World War II Dead To United States



The first of the war dead—the heroes in the Pacific and in Europe have arrived back in the United States. Photo shows United States' Honor Guards on the U. S. Army transport, "Joseph V. Connolly," as they mount watch over the symbolic United States casket which represented United States World War II dead. The first shipment included 5,600 of the dead veterans returned from Europe.

## Ashe All-Stars To Begin Games Friday, Nov. 7

Rules And Regulations Announced By Pres. Jackson; Schedule Given

The Ashe county all-stars will officially begin their basketball season November 7. R. O. Jackson, president of the all-star association announced this week.

At a meeting held at Jefferson, Friday, Jackson was named president, and William Lather was named secretary-treasurer of the association. Named on the executive committee were representatives of each of the teams in the association.

Rules and regulations governing the all-stars were voted upon at the meeting. Those decided upon are: 1. No player will be able to transfer to another team after beginning of the season. 2. High school and college varsity players will not be eligible. 3. Each team must file list of players with R. O. Jackson, Jefferson, by end of second week of conference games. 4. If for any reason visiting team is unable to play scheduled game, the home team must be notified at least two days before date of game. 5. Teams are requested to send results of each game to this paper in order that standings may be kept up to date.

The schedule for the first week of playing beginning Friday, November 7, is as follows: Va.-Carolina at Lansing; River-view at Elkland; Ashe County Rebels vs. V. F. W., at Jefferson; Fleetwood, bye. The remainder of the schedule will be published next week.

## Dr. Baver Visits State Test Farm

Dr. L. D. Baver, who recently resigned as Dean of Agriculture of State College and Director of Experiment Station, to accept a position of director of research at Sugar Refineries, paid his final visit to the test farm at Trunson, yesterday. He reported that he was highly pleased with the progress made there.

Another visitor from State College, at the test farm, this week, was J. C. Pierce, who has recently been placed in charge of Beef Cattle and Sheep Research at State College. He succeeded John Foster, another Ashe county man, who resigned recently to accept a position as head of the Animal Husbandry Department of the State of Maryland.

## Some Of Ashe County's War Dead Among Fallen Heroes To Arrive In N. Y. This Week

### Reynolds Heard By Teachers At Annual Banquet

Program Also Includes Light Entertainment; Graybeal Presides

Dr. Lee Reynolds, of ASTC, the speaker for the annual N. C. E. A. banquet held here last Wednesday, chose as his subject "We Ourselves as Teachers," and stressed the fact that many have left this profession. "We have not yet faced the crisis in the teacher shortage, particularly in the elementary grades," he said.

### Grassy Creek 4-H Club Meets

The Grassy Creek 4-H club met on October 14, and elected officers. Those elected for the coming year are Audrey Colvard, president; Joe Young, vice-president; Carol Dean Handy, secretary; and Barbara Jean Hall, reporter.

### No Plans Announced For Funerals; Legion Will Assist in Services

There will be no funerals for the 2250 war dead that returned New York this week, according to the funeral director, Joseph V. Connolly, who said he serves from the Alleghany theatre of operations.

Included in the group were Sgt. Carl E. Oly, son of Mr. and Mrs. J. E. Oly, of Mt. Airy; Pfc. Carl T. West, son of Mr. and Mrs. Ira B. West, of Mt. Airy; Pfc. Thomas W. H. son of Mr. and Mrs. Houston M. Wyatt, West Jefferson.

As far as it could be learned yesterday, no arrangements had been made yet for the funerals of these honored dead. Officials of the American Legion Post said they would cooperate in any way where their services were desired.

Most of the Carolinians were exhumed from the Henri-Chapelle military cemetery, 16 miles northeast of Liege, Belgium, which was established September 28, 1914, by the First Army as it drove through northern France and across Belgium in the victorious fall campaign that

## Preliminary Approval Is Given Hospital Expansion

The proposed site for the expansion program for the Ashe county hospital was one of the 37, this week, given preliminary approval by the executive committee of the medical care program at a meeting in Raleigh.

Dr. John A. Ferrell, executive director of the Medical Care commission, said that following preliminary approval of the hospitals, the communities must submit detailed plans and that these must be approved by the commission and approved by the U. S. public health service before contracts for construction can be let.

Dr. Ferrell said that inspections are being made this week of the three state tuberculosis hospitals and mental hospitals at Raleigh, Morganton and Goldsboro to determine the construction items eligible for federal aid and to approximate the cost for each.

He said that when these institutions file their applications and the University of North Carolina applies for funds for a teaching

## Work Now Going Forward On New Building Here

Will Be Ready When Burley Season Opens Dec. 1, Officials Announce

Members of the board of directors of the local tobacco warehouse announced this week that they had been assured of buyers, by tobacco companies for this year and that the building now under construction in West Jefferson would be ready for use when the burley season opens, December 1.

"We are looking forward to serving the farmers of this area and will appreciate the cooperation of everyone," one of the members said.

As had been pointed out before the tobacco market here will serve the farmers in this area and cut down much of the time and distance required to the more distant markets.

Kerr Scott as well as other agricultural leaders have been interested in the establishment of the market here. Congressman R. L. Doughton is also assisting in its establishment.

The warehouse is being built by local people with growers, business men and others subscribing stock. It was pointed out that there is still some stock available and anyone interested may contact members of the board of directors or members of the finance committee.

The directors are: J. R. Phipps, W. D. McMillan, J. E. Roland, G. (Continued on page 4)

## Wrecked Plane Near Whitetop

Had Been Lost For More Than A Year; Pilot Identified By Wife

A number of Ashe county people in the Lansing section have chosen mountains to view the remains of a plane wrecked more than a year ago on Mount Rogers, in the Whitetop section, but consumed a mystery until discovered by a game hunter last week.

The pilot has been identified as Christopher A. Sulzbach, of Cannon, N. J., by his widow. The plane, an Army C-75, apparently left Nashville, October 12, 1946, enroute to Central Flying School in Camden, New Jersey.

Boyer Gray of near Whitetop was seen hunting in the desolate mountain region early Wednesday morning when he heard a noise that sounded as if one of the dogs had stepped on some metal. He investigated and found the wreckage spread over a 100-yard area.

Preliminary investigation of the wreckage indicated that the plane struck a tall tree just before crashing.

The body was taken to the Vaughan-Gwynn Funeral Home at Galax.

## Parking Meters Go Into Use Sat.

The parking meters now being installed in the town of West Jefferson will be ready for public use, Saturday morning, town officials announced this week. Although the actual installation work may be completed before then, the meters will not be used until Saturday.

The meters can be used two hours or for 12 minutes intervals officially. A complete explanation of use of the parking meters may be found elsewhere in an advertisement in this paper.

Persons working at various business houses in West Jefferson will be able to find parking space in lots designated for them, it was pointed out. It is hoped that a lot will be available behind Rhodes Furniture company and Belk's Department store by this time.

## District Supt. To Preach Sun.

Rev. J. H. Armbrust, district superintendent, will preach at the quarterly conference at the Helton Methodist church, Sunday morning at eleven o'clock, it was announced by Rev. W. C. Eastridge.

The public is cordially invited to attend.