

Drive Safely
You May
Save A Life

The Skyland Post

ASHE COUNTY IS ...
Leading Livestock and Dairy
County in North Carolina
Population: 22,664

VOLUME 18, No. 46

\$2.50 a Year in Ashe County

WEST JEFFERSON, N. C. THURSDAY, NOV. 13, 1947

\$3.00 a Year Out of County

PUBLISHED EVERY THURSDAY

Still Short Of Quota For War Memorial Fund

Those Who Have Not Contributed Are Urged To Do So At Once

It was announced this week that the county is still short of the goal set for the War Memorial fund. Veterans pointed out that contributions are still coming in but that there are a large number who have made no contribution to either the iron lung or the monument to be erected on the courthouse square. Those who have not made a contribution are urged to do so at once.

Published here is a list of contributors not previously reported:

American Legion, \$100.00.
Ira T. Johnston, \$25.00.
Jefferson High School, \$17.75.
Grant Bauguess, \$10.00.
Edward Barr, Joe F. Neal, \$5.00 each.

Mrs. Alice Bard, \$2.40; Jefferson Cafe, \$2.23; Clarence Stansberry \$2.00.

Scott's Store, \$1.13; Jefferson Service Station, \$1.05.

A friend, Bower Calloway, Dave Waugh, Dave Burkett, Beulah Cockerham, Phleat Fender, Mrs. Sallie McConnell, R. R. Badger, Saepner's Store, Paul Hash, W. P. Colvard, DeWard Colvard, G. C. Shepherd, J. W. Huffman, Herman Bauguess, Marion Bauguess, Claude Perry, Clarence Perry, Stella Eldredge, Orion E. Shepherd, Mr. and Mrs. D. P. Stanley, Ronda Powers, Oscar Goss, Bill Stanley, Howard Stansberry, Lee Osborne Store, Joe Hampton, Carson Thompson, Mills Hartsoe, \$1.00 each.

A number of smaller contributions under \$1.00 have also been made.

Farmers To Join 100 Bushel Club

Reports On Corn Yield To Be Sent To County Agent, H. D. Quessenberry

Ashe county farmers who have grown as much as 100 bushels of corn are eligible for membership in the 100 Bushel Corn Club. H. D. Quessenberry, county agent, announced this week. This is a state-wide club and is being sponsored to determine the increased corn yield in the state.

Membership certificates will be sent to Ashe farmers as soon as they are declared eligible. Farmers seeking membership should send in the following information to the county agent's office: Name, address, county, hybrid or variety, yield, year, row width, row spacing, planting date and number of acres.

Also the pounds, grade cost of fertilizer per acre, the cost per bushel and the total realized. Also the rotation and previous yields and whether the cover crop was turned.

A prize will be awarded for the farmer with the top yield in the county. County agent Quessenberry stated. Any additional information may be secured from the county agent's office.

W. J. Band Will Broadcast Sun.

Mrs. Lorene Perkins Dickson announced this week that the West Jefferson high school band would broadcast over radio station WKBC, North Wilkesboro, on Sunday afternoon from 3:30 to 4:00 o'clock.

The entire band will play several numbers and there will also be some special numbers, Mrs. Dickson said.

Rotarians To Go To Blowing Rock

Plans were made last week by the Jeffersons Rotary Club last week for a representative group to attend the birthday of the Blowing Rock club tomorrow night at 7:30 at Blowing Rock. The local club sponsored the club at Blowing Rock and approximately 24 Rotarians and Rotaryans plan to attend.

Tonight at the regular meeting at 6:30, John Reeves, J. L. Segraves and Dr. J. K. Hunter will have charge of the program.

Plan Opening Of Holiday Shopping Season Here Nov. 29

HAS BIRTHDAY



Representative Robert L. Doughton, oldest member of Congress was honored by thousands on the observance of his 84th birthday in Washington, Friday, November 7.

Farmers Urged To Make Reports Of Performances

Those Wanting Limestone Delivery This Fall Should Place Orders Now

Farmers are again urged to make performance reports to the AAA office as soon as possible. It is necessary for these reports to be made at once in order that the amount earned, without the use of material furnished through the office, may be determined, it was announced today.

Producers who wish to order limestone "early this fall should place their order now as a closing date for taking lime orders will be set in the near future, it was explained.

The date for holding community elections will be announced in a few days. Farmers in each community should be giving the election some thought as it is hoped that the most capable men will be elected in each community and it is up to the voters to select these men.

War Dead Will Arrive Friday

News has been received here by members of the family, that the body of Carl E. Oliver, who was killed in action in the European Theatre and originally buried in Hennes Clappel, Belgium, would arrive here on Friday.

Plans for the funeral service are still incomplete, but it is expected that burial will take place in the Oliver family cemetery on the Laurel.

News has also been received here that the body of Frank DeBord, another war casualty, would also arrive on Friday.

The American Legion has announced that they will cooperate in holding military rites for the war dead in the event the families desire it.

Parade Will Herald Arrival Of Santa Claus; Other Features Planned

The Christmas shopping season will be officially opened in West Jefferson on Saturday, November 29, when a parade, led by the West Jefferson high school band, will herald the arrival of Santa Claus. Initial plans for the opening were discussed by the trade promotion committee and the directors of the West Jefferson Merchants Association at a meeting on Monday night.

Business firms, organizations and schools will be asked to take part in the parade and prizes are planned for school floats.

Other plans include street decorations, special window displays and other features that will enable everyone to do their Christmas shopping easily.

Sharpe S. Shoemaker, president of the merchants association named a number of committees to work with the Christmas trade promotions.

The Skyland Post announced that in cooperation with the merchants the annual Christmas shopping edition will be published Thursday, November 29, heralding the opening of the season and the arrival of Santa Claus.

Named on the committee for street decorations are Carl B. Graybeal, chairman; D. E. Blackburn and Floyd Triplett.

The special Santa Claus committee is composed of Amos Wagoner, Jr., Mrs. Earl Davidson, Quentin Little and B. R. Hoide.

The fund raising committee, which will make collections necessary for the Christmas decorations, Santa Claus and the greedy families, is composed of Glenn Little, chairman; J. V. (Continued on page 4)

Parking Meters Net Town \$101.

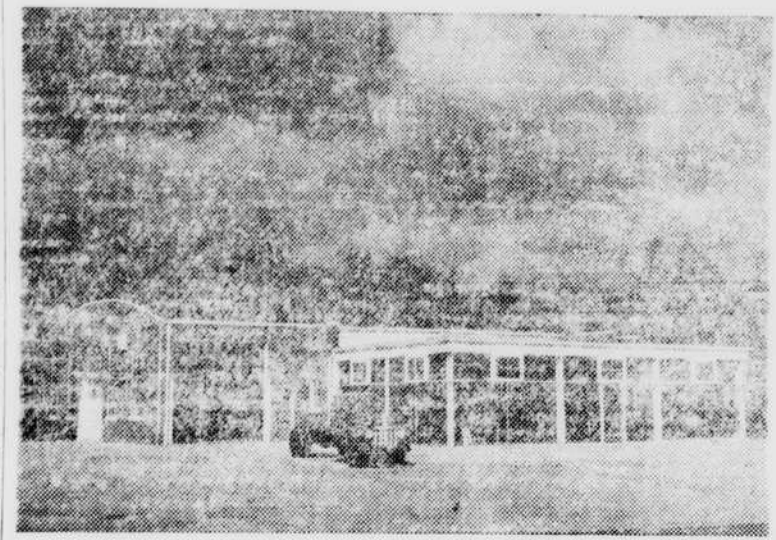
Attention Is Called To The Fines Liable For Use Of Slugs

After the first week of using parking meters in the town of West Jefferson, town officials stated that the 200 meters netted \$104.30 for the first week. The town will be given fifty per cent of the total income, each week, it was pointed out.

A number of slugs and washers were also found in the meters. Attention of motorists is called to the fact that a fine of \$50.00 will be imposed upon anyone found putting slugs in the machines.

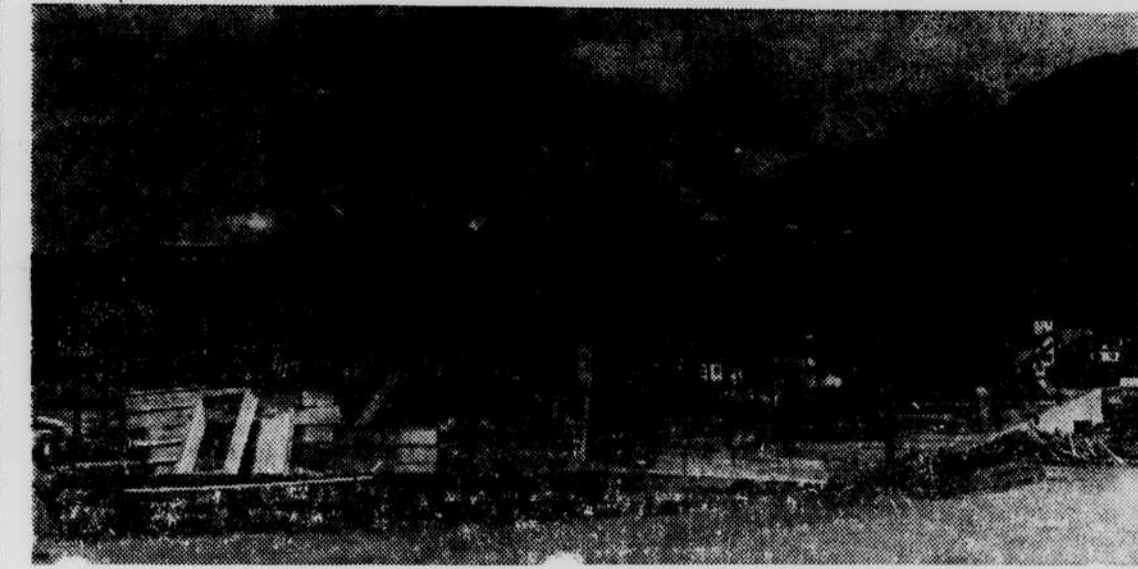
There was some discussion concerning the use of the parking meters on holidays and especially on Armistice Day, November 11. However, it was not the town ordinance concerning one of the holidays designated by parking meters. Thanksgiving and Christmas Day will be observed, however. Several tickets were given the morning of November 11, however, during the afternoon, the meters were not checked by town officials.

One Of Town's Newest Buildings



The new home of the Ashe Motor Company, on Jefferson avenue. This is one of the town's most recently completed new buildings. (Staff Photo)

Tri-State Burley Warehouse Being Rushed To Completion Ashe Farmers To Have Artificial Breeding Unit



Work is rapidly going forward on the new Tri-State Burley Tobacco Warehouse, here. Since this picture was taken, last week, the roof has been completed and siding work started. The building will be ready for use when the burley season opens December 1. (Photo by Weston)

Drama Festival Is Planned For Friday, Nov. 21

Several Of County's High Schools To Take Part In Jefferson Event

Plans are now being completed for the one-act play festival to be held at Jefferson high school next Friday, November 21, when a number of high schools are expected to take part.

This event, which is the first of its kind to be sponsored in the county, was originally scheduled for an earlier date this month. It is being sponsored by the Jefferson Dramaticists, with plays scheduled for the afternoon at 3:00 p. m. and at 7:30 p. m.

Schools expected to take part in addition to Jefferson are West Jefferson, Haywood, Lenoir and Riverview. Each of these will give a one-act play. Prizes will be awarded the winners.

Archie Williams, director of the Appalachian Playwrights, along with some members of the group as well as Miss Lois Higgins, English instructor and dramatics coach will be present to hold performances so which the public is cordially invited. A small admission charge will be made.

Scout Fund Is Now Near Quota

The drive to raise \$1500 for the Boy Scouts is now nearing completion, but is still around \$100 short of the goal. Rev. John W. Luke, chairman, announced yesterday.

Schools and others who have contributions that have not been reported are asked to turn them in immediately.

"We want to reach our goal if possible, this week," Mr. Luke said.

73 Ashe Drivers Renew Licenses

Seventy-three motorists renewed their driver's license during the month of October, Ralph Stansberry, license examiner for Ashe, Alleghany and Watauga, reported.

Persons whose names begin with A and B were in this group, Mr. Stansberry stated.

T. C. Bowie Now Critically Ill

T. C. Bowie is critically ill in the Wilkesboro hospital. He was taken there on Monday after becoming ill on Sunday.

He was operated on Tuesday, but his condition had not improved yesterday afternoon.

Farm Bureau To Meet Next Tues.

Plans are underway for a meeting of the Farm Bureau at the Community building next Tuesday, November 18, when a special program has been planned.

All farmers are cordially invited to attend.

Make Plans For Election Of PMA Committeemen By Farmers Of Ashe County

Production Of
Grade A Milk To
Be Discussed Fri.

Meeting To Be Held At Court-
house; Interested Farm-
ers Are Invited

The production of grade A milk is to be discussed at a meeting to be held at the courthouse in Jefferson on Friday night at 7:30 to which all interested farmers have been invited. H. D. Quessenberry, county agent, announced this week.

"A large number of people have asked me questions about grade A milk production. The company that is interested in buying grade A milk from Ashe county would like to meet with you and explain the details of their plan. Also F. R. Farnum, Extension dairy specialist, is expected to be at this meeting. Mr. Quessenberry said.

"I feel sure at this meeting, a great number of questions will be answered and we can decide whether we should or should not go into the production of grade A milk," he concluded.

A number of Grade A letters are under construction in the county.

DOROTHY D. CAMPBELL PLACED ON DEAN'S LIST

Miss Dorothy Dean Campbell, daughter of Mr. and Mrs. Q. R. Campbell, of West Jefferson, is making an outstanding record at Gardner-Webb College this year. Information just released from the college reveals that she was among the few first year students making the Dean's list.

A student must average 92 to be eligible for this. She has also been named as proctor in the dormitory in which she lives.

Funeral service will be held at the Jefferson Methodist church this afternoon at 3:30 and burial will follow in the Jefferson cemetery.

He is survived by his wife and the following children, Mrs. Wilma Gambill, of New York, Burl Waddell of Jefferson and Mrs. Maude Evelyn Wright, of Illinois.

DICKSON TO SPEAK ON RADIO TOMORROW

C. M. Dickson will speak Friday afternoon at three o'clock over radio station WKBC, North Wilkesboro, it was announced this week.

His topic will be "Is Our Educational System Doomed?"

Several Changes Are Made In School Bus Routes In County

D. J. Dark, of the highway safety division of the State board of education, has just completed a survey of the bus routes in the county and has approved a number of changes.

In the Healing Springs district an extension of 1.1 miles has been approved at the present turning point on the Shatley Springs road.

The extension of seven-tenths of a mile on the Helton road, in the Virginia-Carolina district was approved.

It was also recommended to the highway department that the road along New River on the Alleghany county, on which several children live, who are now attending Virginia-Carolina high school be improved so that adequate transportation can be provided here.

In the Nathan's Creek district an extension of seven-tenths of a mile was granted on the Ashe-Alleghany county line road. An extra trip has been authorized for the Dog Creek bus route to relieve an overloaded condition. A change on the present Dog Creek bus route was advocated with improvements to be made in the road.

In the Lansing district an extension of one mile on the Jordan Branch road to the Ham home has been granted.

An extension of one mile was granted on the road west from (Continued on page 4)

Program To Get Underway In County On January 1; Koontz Is Technician

Definite plans for artificial breeding in Ashe county have been completed, H. D. Quessenberry, county agent, announced this week and the county Guernsey Breeder's Association has agreed to sponsor the program here in the county. Clifford Koontz has been named as the technician for the county and will go to Raleigh, November 17 for special instruction work.

The program will get underway in the county, January 1, Mr. Quessenberry stated. Arrangements have been made for semen from Guernsey, Jersey or Holstein sires to be sent here. Proven bulls of the three major dairy breeds will be located in Asheville.

"We are anxious that each farmer who is interested in this breeding program, sign up the number of cows that he will have to breed," Mr. Quessenberry stated. A system will be worked out in the future whereby the farmer will be able to notify the milk hauler for appointments.

Families of war casualties whose bodies are being sent home are being literally robbed through their claiming to be representatives of the VFW Post throughout the country. Lowell Smith, commander of the VFW Post 6513, stated this week.

Commander Smith stated that a warning had been issued by State Commissioner Smith to warn the public that any man, under the name of VFW Post 6513, who claims to be a representative of the VFW Post throughout the country, is a fraud. He stated that the public should be warned to be careful of such men.

The VFW Post 6513, stated this week.

It can be made possible for every eligible farmer who is in the county to have a share in the interest of the program. This year, with so many problems facing farmers, it is doubly important that all men are checked to determine the farm power.

The grade A milk production of the county is the result of the program. The county agent, H. D. Quessenberry, said this week.

It can be made possible for every eligible farmer who is in the county to have a share in the interest of the program. This year, with so many problems facing farmers, it is doubly important that all men are checked to determine the farm power.

Warn Public Of VFW Pretenders

Families Of War Casualties Being "Robbed" By False Representatives

Families of war casualties whose bodies are being sent home are being literally robbed through their claiming to be representatives of the VFW Post throughout the country. Lowell Smith, commander of the VFW Post 6513, stated this week.

Commander Smith stated that a warning had been issued by State Commissioner Smith to warn the public that any man, under the name of VFW Post 6513, who claims to be a representative of the VFW Post throughout the country, is a fraud. He stated that the public should be warned to be careful of such men.

The VFW Post 6513, stated this week.

It can be made possible for every eligible farmer who is in the county to have a share in the interest of the program. This year, with so many problems facing farmers, it is doubly important that all men are checked to determine the farm power.

The grade A milk production of the county is the result of the program. The county agent, H. D. Quessenberry, said this week.

Scores For Ball Teams Announced

Six Ashe county high school teams were active in basketball courts Tuesday night with good results.

West Jefferson took a good lead over Elkland, the girls winning 33-22 and the boys, 24-23.

Jefferson also won a double header from Lansing. The girls outscored the Lansing team by a score of 39-3, while the boys were victorious 20-22.

Scores of the Fleetwood-Nathan's Creek game were not reported in time for publication.

The schedule for next week is as follows:

NOVEMBER 18, 1947
Fleetwood at West Jefferson
Elkland at Riverview
Nathan's Creek at Lansing
NOVEMBER 20, 1947
Jefferson at Virginia-Carolina

Obids To Have New Church Bldg

The members of the Obids Baptist church have launched a building program and are now preparing to erect a new church building of brick. Contributions and pledges have already started coming in and a list of these will be published next week.

Rev. Parson Phillips conducted a very successful revival meeting at the Obids church Sunday night. He was assisted by the pastor, Rev. Ezekiel S. Stor, Rev. Herbert Parsons, of Lenoir, conducted the singing.

Much interest was shown in the meeting and there were eleven additions to the church. A baptizing will be held Sunday morning at ten o'clock near the home of Wiley Burgess.