

### Area Plan of Wiping Out Cattle Disease Scheme Is Proving Popular in Many Parts of Country

Approved by the United States Department of Agriculture... Testing cattle for tuberculosis... The cattle at once in a county or other area...

During the past year nearly 1,800,000 cattle were tested under this plan, and this was more than 50 per cent of all the cattle tested in the United States.

So far 37 counties have finished testing all of the cattle once, an increase of 60 counties over the preceding year.

### Indiana Roads Are Not Intended for Speeding

Indiana state roads are constructed and maintained to expedite overland travel... Five months in the year, but their smoothness of surface does not necessarily mean they should be converted into speedways.

Indiana state roads will go into the winter in excellent condition to withstand the rigors of thaws and freezes, highway officials say.

### Get Maximum Number of Eggs in Winter Months

To get the maximum number of eggs during the cold months there are several important things to be considered. Generally speaking, these resolve themselves into four principal points.

### It Is Usually Hard to Determine Sex of Geese

There is usually some difficulty in making sure of the sex of geanders and geesses. The geander has a shorter and thicker neck than the geesse.

### Scours in Young Calves Caused by Indigestion

Ordinary scours in young calves is caused by indigestion. Either the calf has been getting too much milk or the milk is too rich in fat.

### Female Geese Are Good Until Ten Years of Age

Female geese are usually kept until they are ten or twelve years old, or as long as they will lay well, but the geanders are seldom kept after they are six or seven years old.

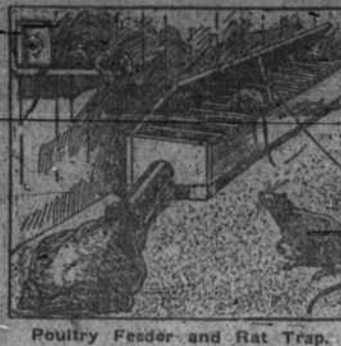
### Late Molters Need Some Protection on Cold Days

The late molters need protection from exposure whenever they are outdoors in cold weather. It pays to keep them confined on windy days and furnish a ration that is well balanced and sufficient to develop a rapid feather growth.

## POULTRY

### Rat Trap and Dry Mash Feeder in Combination

Mash feeder in a rat-trap, in addition to the poultry house. The feeder is a long box, 1 foot high and 1 foot wide with a sloped and slatted top.



Poultry Feeder and Rat Trap.

A small prop with a string attached to it used at night. The string led away to a distant window so that the poultryman could pull it without entering the poultry house and disturbing the rats.

### Pay More Attention to Feeding Poultry Flock

With the coming of cold weather and higher prices for eggs, careful poultrymen pay more attention than ever to the feeding of their flocks.

The amount of feed depends upon the appetites of the birds, and no definite rule for feeding will apply to all conditions.

### Important to Note Size and Shape of All Eggs

For those who are shipping eggs to special markets, it is important to watch the size and shape of the eggs, as well as to see how many the hens are laying and what color they are.

The new breeder of today can make more money by breeding for egg quality than for more eggs, says an eastern authority.

### Day of Definite Methods

The day for haphazard methods in breeding poultry has passed into the pages of history. This is the day of definite accurate methods.

### Pullets Lay in Winter

Young stock that begins to lay in the fall of the year will usually lay throughout the winter, the period when eggs are highest in price.

## Daddy's Evening Fairy Tale

By MARY GRHAM BONNER

### CHRISTMAS TREE

"Of course," said the Christmas Tree to Billie Browne, "trees are at their best when Miss Springtime comes along, and she won't be doing that for some time."

"They all wear their best frocks in her honor and look truly lovely. The Red Maple Tree wears her best red party frock and looks too lovely for words, as she and her family stand here and there among the other green trees."

"The flowering shrubs are all out in the springtime and their ways are so interesting. They have blossoms and buds and leaves and they all welcome Springtime with the most beautiful and graceful of manners."

"The animals, too, wake up from their winter sleep and tell Miss Springtime how much they care for her."

"A great many of the animals aren't so fond of Old Man Winter and they wait until Miss Springtime has hold of things before they get about."

"The birds all greet Miss Springtime, too. They arrive at just that season and they make their nests and sing and call, so that their friends will recognize them by these calls and songs."

"They chat about their family lives and tell about the feather makers they go to—some making a specialty of blue feathers, some of red waistcoats such as Mr. Robin always gets."

"Mr. Robin tells how he can listen near the ground and tell just where there is a worm. Yes, he says, when he cocks his head on one side he can hear the worms stirring under the ground."

"The barnyard animals enjoy the spring and the mud. Gallant Mr. Rooster is very apt then to gracefully hand the hens fine worms upon frequent occasions which means the same as very often."

"The geese, who're always off by themselves, shuffling in their high voices and being very cross, do more talking in the spring, too—or rather it seems as if they did more as they, too, are wandering by themselves about the barnyard."

"The ducks are queaking and eager to get into the ponds, the pigs are digging their snouts in the ground and are enjoying themselves immensely."

"But I am happy because I belong to the Christmas Tree family. I do not care if I am not so much noticed in the spring as are all these other creatures I've just mentioned."

"And it is true! My family do not get the attention these other trees and animals and spring-loving creatures do."

"But it makes no difference. For we feel that our family has had the greatest honor of all. We are used as Christmas trees."

"Yes, our family of trees is the kind they say make the best Christmas trees of all, and so we are happy and we are just proud."

"Judge Just Praise says that we have every right to be proud."

"I don't think Weeping Willow should be called Weeping Willow. They're a nice family, giving shade and coolness and beauty wherever they are."

"And I don't think the Poplar trees should be called 'common' when they are willing to grow up and improve up-sightily and where forest fires have raged."

"I like the good old Elm and the Beech trees, and I think trees have the old stories to tell."

"But Billie Browne, the best of all, is the one outstanding fact about our family."

"We're used as Christmas trees. Oh, Billie Browne, isn't that enough to make any tree happy for Christmas day is the greatest day in all the year!"

"You have the highest honor paid you of all the trees," Billie Browne said.

"What did she mean?" "So you have taken to carrying around a monkey? This is going too far."

"Well, you never saw anywhere with me," was his wife's ambiguous return. A matter of course. Man (helping the dear young thing find a book in the public library) have you read a book?

## POULTRY

### Investigate So-Called New Breeds of Poultry

During the past few months the United States Department of Agriculture has received many requests from all parts of the country for information concerning two so-called new "breeds" of poultry, the "Turken" and the "Kivi".

The statements in the advertisements and literature claim that the "Turken" was originally produced by crossing a male turkey with a female chicken, and that the "Kivi" was produced by crossing a male ostrich with a female chicken.

Successful crosses have been made between the pheasant and the chicken, and in practically every case the progeny has been of the male sex and sterile. Also, successful crosses have been made between the guinea and the chicken and here, again, the sex of the progeny has almost invariably been male and the hybrids have been sterile.

One other point must be made concerning the so-called "Turken" says the department. The illustrations accompanying the advertisements and literature are in all probability photographs of the Transylvanian naked-neck chickens. According to the best information obtainable this odd-looking breed originated in West India and the characteristic naked-neck has bred true for many years.

As far as the reported cross giving rise to the "Kivi" is concerned, there is much less evidence in support of such a cross than in the case of the "Turken". This is too violent a cross to produce any results whatever.

The burden of proof that such crosses as those giving rise to the "Turken" and the "Kivi" must remain with the sponsors of such novel productions. In the meantime, the interests of the public should be safeguarded.

### Much Depends Upon Care When Pullets Will Lay

At what age should pullets begin laying? It is commonly acknowledged that Leghorn pullets on the average will begin laying at the age of 5 to 5½ months.

### Timely Poultry Hints

Fall-hatched chickens are in good demand from January 1 to April 1. Count on a shrinkage of a half-pound for each bird shipped.

Ship adult fowl in a box 20 by 18 by 12 inches, to hold 24 birds. An animal heat must be out of the carcass before packing for shipment.

Young fowl in the same package with old stock, will command the prevailing prices for the latter.

The regulation box for a dozen broilers measures 17 by 13 by 4 inches, inside measurement. It is made of half-inch lumber.

Cockerels that develop head points and begin to crow early in life are apt to be the best breeders. Breed the best ones before selling too many broilers.

Shenandoah Life Insurance Co. ESTABLISHED 1918. CONTROLLED BY SOUTHERN... A. P. DANIEL, District Agent, HURDLE HILLS, S. C.

Moore's Market We sell the Best. HOME KILLED AND WESTERN BEEF. Fish and oysters, Tuesdays, Fridays and Saturdays. Phone us your orders. Prompt delivery. We Buy Hides.

Why it is Easy to Own The Westinghouse Light and Power Plant has demonstrated in actual day-in and day-out service on farms that it is dependable and easy to operate. And now, by making it easy to own as well as easy to operate, Westinghouse has brought all the advantages of electric service within the reach of every farmer and his family.

Westinghouse LIGHT AND POWER PLANT Easy to Operate J. T. BRADSHAW, Roxboro, N. C.

Fordor SEDAN \$685 FULLY EQUIPPED Lower Priced Than Ever Before THE many desirable qualities inherent in the Fordor Sedan commend this car to the consideration of every discriminating motorist. When, in connection with these qualities, the low price of the car is considered, the value of the Fordor Sedan becomes unique.