

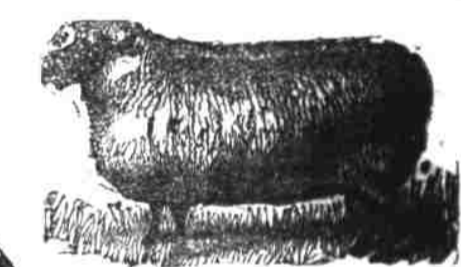
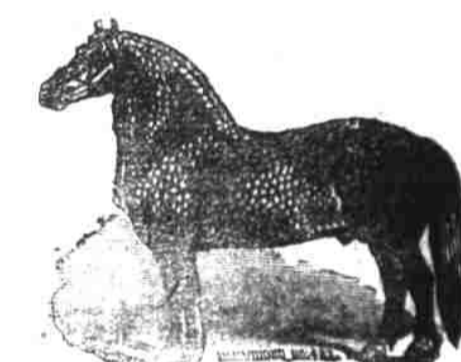
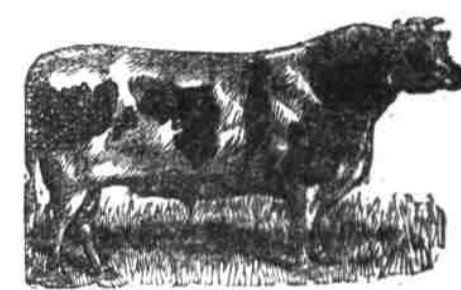
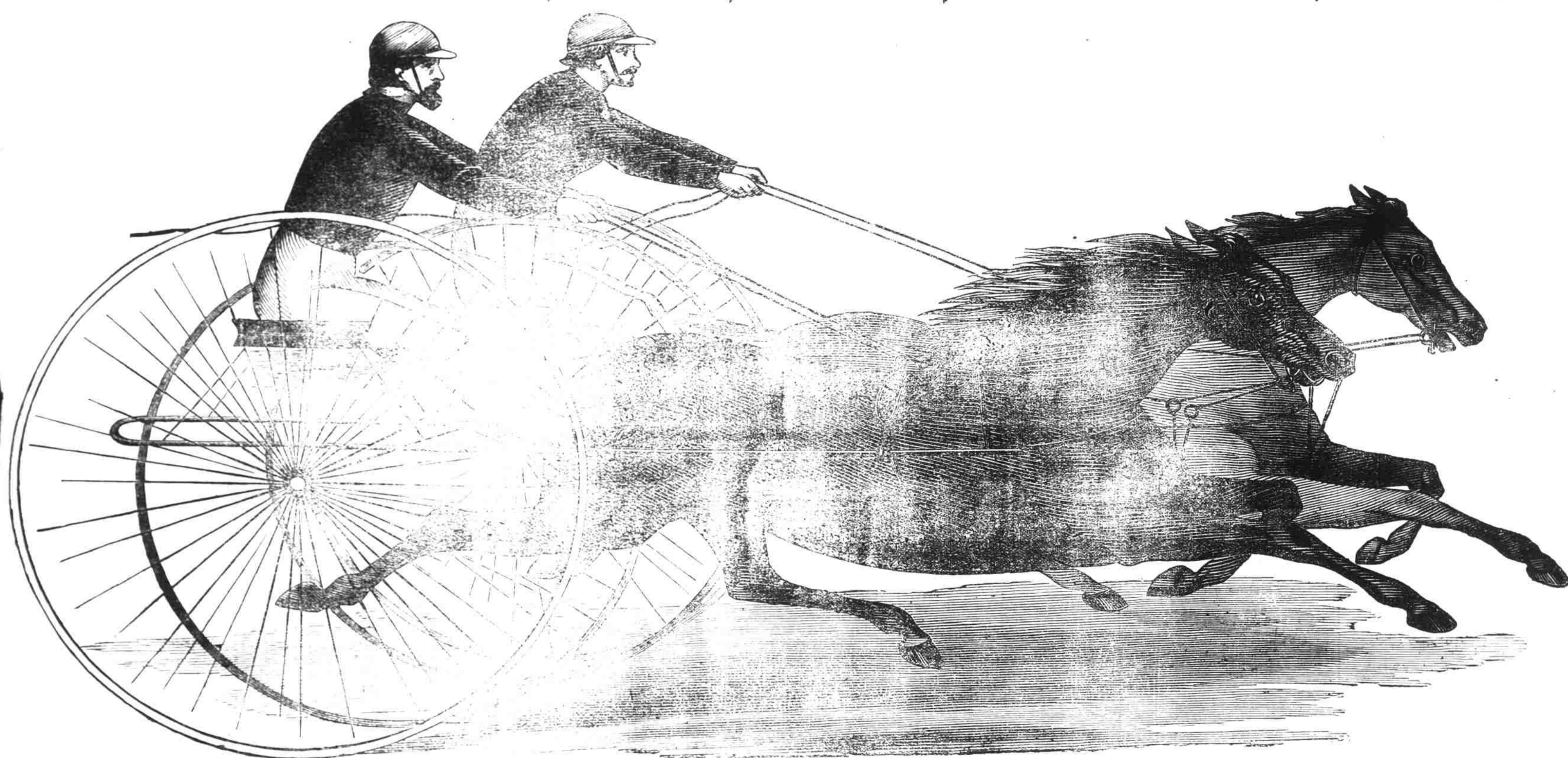
FIFTH - GRAND - ANNUAL - EXHIBIT

← EAST CAROLINA →

Fish, Oyster, Game & Industrial Association!

New Berne, N. C.

FEBRUARY 22, 23, 24, 25 26, 27, 1892



RACING, Tuesday, Wednesday, Thursday & FRIDAY.

PURSES AGGREGATE \$1,300.00, LARGEST EVER OFFERED IN THE STATE.

Track one of the best in the State. Elegant Grand Stand.



MOST COMPLETE AND ATTRACTIVE FAIR OF ITS KIND EVER HELD. THE FISH, OYSTER and GAME COLLECTION will be the largest ever exhibited in the United States.

THE POULTRY EXHIBIT will include the finest specimens of all named strains and for Excellence and Variety this Department will be unsurpassed.

FARM PRODUCTS, SPECIMENS OF MARL, NATIVE WOODS, ETC.

BALLOON ASCENSIONS and PARACHUTE LEAPS To-day, Wednesday and Friday. There will be many other amusements on the grounds each day.

HANDSOMEST DISPLAY OF FIRE WORKS EVER SHOWN IN THE STATE.

SEND FOR PREMIUM LIST. It has been revised, enlarged, and includes nearly all articles entered for exhibition. Competition in all the classes is cordially invited and is open to all.



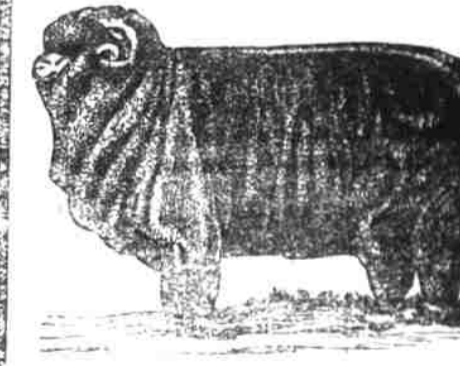
GRAND PARADE OF PREMIUM STOCK. Brood and Blooded Mares, Stallions, Thoroughbreds, Roadsters, Harness and Saddle Horses, Family Horses, All-purpose Horses, Mules, Ponies, etc.

MAGNIFICENT FLORAL DISPLAY. Complete in Extent and Variety and will Surpass all previous Exhibitions.

THE LADIES' DEPARTMENT will contain Hundreds of Useful and Ornamental articles that always attract attention.

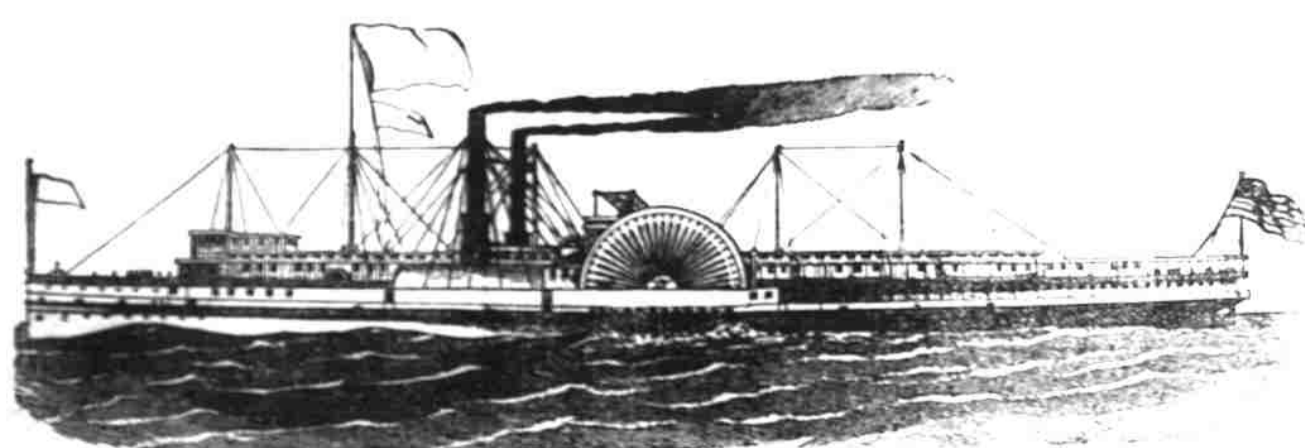
FIRST CLASS BANDS IN ATTENDANCE, which will include New Berne's Juvenile Brass Band, composed of members ranging from 7 to 14 years of age.

ATTEND and compete for Prizes in all departments. No fee charged exhibitors for entries or for feed of any kind. Good stables and competent men to care for stock, etc.

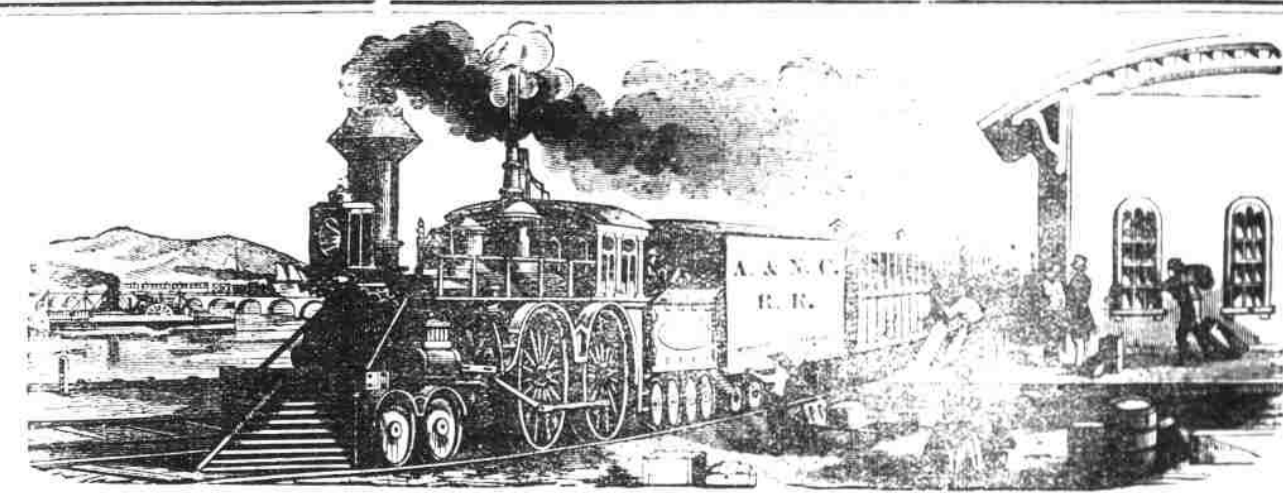


GOV. HOLT WILL FORMALLY OPEN THE EXHIBITION, AND OTHER DISTINGUISHED MEN WILL BE PRESENT.

DAILY EXCURSION TRAINS AND STEAMERS.



RAILROAD RATES ONE CENT PER MILE FOR ROUND TRIP.
LOW RATES OF FARE FOR TRAVEL OVER ALL STEAMBOAT LINES LEADING TO THE CITY.



The Buildings and Grounds will be Brilliantly Lighted Throughout by Electricity. Only 150 Yards from Railroad Station. Gates Open Daily from 9 o'clock A. M. to 10 o'clock P. M.

CHAS. REIZENSTEIN,
Sec. and Treas.

WM. DUNN,
President.