

LOCALS

Don't forget to put your cigarette coupons in the box.

Cy. Thompson, Jr., spent Friday in Raleigh.

The regular debates in the Societies were dispensed with Saturday night on account of the Star Course.

J. Horner Winston, of Norfolk, '05, Rhodes Scholar to Oxford University, is spending a few days on the Hill.

Sam S. Nash, Jr., ex-1910, of Tarboro, a former associate editor of THE TAR HEEL, was here Saturday night.

W. B. Rodman, Jr., was in Raleigh Saturday.

Prof. M. C. S. Noble attended the Teacher's Assembly in Greensboro last week.

The Junior and Senior elevens will play tomorrow. This game decides the class championship.

Help out the Athletic Association by leaving your coupons in the different boxes.

C. E. McIntosh left Monday afternoon for Newton to attend a marriage.

Archdeacon N. Collin Hughes left Monday afternoon to attend a convention at Montgomery, Ala.

Dr. F. P. Venable attended the meeting of the Association of Southern Colleges and Preparatory Schools held at the University of Virginia last week.

The Soph-Junior Inter-Society debaters have been chosen as follows: From the Philanthropic Society, J. A. McGoogan, 1911, and L. N. Johnson, 1912. From the Dialectic Society, I. C. Moser, 1911, and W. F. Hendrix, 1912.

The Senior Banquet Committee consider it necessary to change the date of the banquet from the first Friday night in December to the second Friday night, the 10th.

The Varsity Tennis Team left the Hill Sunday morning for a week's trip to colleges in Virginia. On Monday they play Randolph-Macon, on Tuesday and Wednesday Richmond College; on Thursday and Friday Virginia, and the remainder of the week at Washington and Lee. Fountain and Venable were both in good condition when they left, and a majority of the meets are assured us.

On Saturday afternoon the Horner Military School eleven will line up against the freshmen team on the athletic field. No doubt this will be a very close game, as Horner has defeated the Durham Y. M. C. A. and also the Warrenton High School in two games.

If, for any reason, the suits you have ordered this fall do not fit, call and see me. W. H. Boger of Varsity Tailoring, fits here guaranteed.

The committee for the arrangement of the Junior Banquet has set the date for this event at Friday, December 17th. Nineteen-eleven is the largest junior class in the history of the institution and the men in it should strive to make this banquet a success. The committee promises that the menu, the cards, and the speakers will all be up to the highest standard and it only remains for all the members of the class to procure tickets and attend with en-

thusiasm to make this banquet a historic one. Messrs. C. L. Williams, J. F. Oliver, R. G. Stockton, R. L. Deal, and W. T. Joyner will all be glad to take your name and your check.

Tennis Team Off

Fountain and Venable, the varsity tennis team, left Sunday morning on the trip to meet some of the Virginia colleges. They will play four teams this week, playing off the doubles first.

The following are the games scheduled;

Nov. 8 Randolph-Macon at Ashland.
9-10 Richmond College at Richmond.
11-12 Univ. of Va. at Charlottesville.
13-15 Washington and Lee Richmond.

Economics Prizes

The opportunity to compete for the Economic Prizes offered by Hart Schaffner & Marx has been brought to the attention of students of this university by Professor J. Laurence Laughlin of the University of Chicago, who is chairman of the committee in charge of the contest.

Papers for the prizes are to be submitted before June 1, 1910. There are five prizes, totaling \$2,000. The contestants are divided into three classes, fuller details of which may be had from the head of the department of political economy. The prizes are divided as follows:—

Class "A", first prize \$600; second prize \$400.

Class "B", first prize \$300; second prize \$200.

Class "C", one prize \$500.

Classes "A" and "B" refer particularly to college graduates and undergraduates, and the following subjects have been suggested by Professor Laughlin's committee:

1. The effect of labor unions on international trade.
2. The best means of raising the wages of the unskilled.
3. A comparison between the theory and the actual practice of protectionism in the United States.
4. A scheme for an ideal monetary system for the United States.
5. The true relation of the central government to trusts.
6. How much of J. S. Mills' economic system survives?
7. A central bank as a factor in a financial crises.

The members of the committee, aside from Professor Laughlin, are:

Professor J. B. Clark, Columbia University.

Professor Henry C. Adams, University of Michigan.

Horace White, Esq., New York City.

Edwin F. Gay, Harvard University.

University Directory

ATHLETIC ASSOCIATION.

F. P. GRAHAM, PRESIDENT
O. A. HAMILTON, VICE-PRESIDENT
L. C. KERR, SECRETARY
D. M. WILLIAMS, TREASURER

Y. M. C. A.

W. H. RAMSAUR, PRESIDENT
J. H. BOUSHALL, VICE-PRESIDENT
L. N. TAYLOR, SECRETARY
J. H. JOHNSTON, TREASURER
E. E. BARNETT, GEN. SECRETARY

TAR HEEL.

O. W. HYMAN, EDITOR
ASSOCIATE EDITORS
J. W. LASLEY
R. T. WEBB
N. S. PLUMMER
W. T. JOYNER
L. A. BROWN
F. P. BARKER
L. N. TAYLOR
A. H. WOLFE, BUS. MANAGER
C. THOMPSON, JR., AS. BUS. MGR.

MAGAZINE.

T. P. NASH, EDITOR
N. S. PLUMMER, ASSISTANT EDITOR

ASSOCIATE EDITORS

W. H. FRY
F. E. WINSLOW
L. N. TAYLOR
J. M. REEVES
C. B. SPICER, BUS. MANAGER
P. DICKSON, AS. BUS. MANAGER
YACKETY YACK.
T. J. McMANIS, EDITOR
C. B. RUFFIN, BUSINESS MANAGER
L. D. BELDEN, BUSINESS MANAGER

FOOTBALL.

C. C. GARRETT, CAPTAIN
J. N. JOYNER, MANAGER
R. G. STOCKTON, AS. MANAGER
C. L. WILLIAMS, AS. MANAGER
A. E. BRIDES, COACH

BASEBALL.

B. C. STEWART, CAPTAIN
R. DRANE, MANAGER
E. F. McCULLOCH, JR., AS. MGR.
W. T. JOYNER, AS. MGR.

TRACK TEAM.

D. M. WILLIAMS, CAPTAIN
GEO. RUTZLER, MANAGER

TENNIS ASSOCIATION

J. W. LASLEY JR., PRESIDENT
S. R. CARRINGTON, SEC. & TREAS.

SENIOR CLASS.

A. H. WOLFE, PRESIDENT
W. R. EDMONDS, VICE-PRESIDENT
J. A. HIGHSMITH, SECRETARY
S. F. TEAGUE, TREASURER
T. P. NASH, POET
D. R. KRAMER, STATISTICIAN
J. R. NIXON, HISTORIAN
W. H. RAMSAUR, READER LAST
WILL AND TESTAMENT
J. M. REEVES, PROPHET
L. T. AVERY, CAPT. FOOTBALL TEAM
J. H. BOUSHALL, MGR. FOOTBALL TEAM

JUNIOR CLASS.

B. C. STEWART, PRESIDENT
JOHN TILLET, VICE-PRESIDENT
R. L. DEAL, SECRETARY
CY. THOMPSON, JR., TREASURER
G. W. THOMPSON, HISTORIAN
R. T. WEBB, CLASS REPRESENTATIVE
J. W. CHESHIRE, MGR. FOOTBALL TEAM
J. S. COWLES, CAPT. FOOTBALL TEAM

FIRST YEAR MED. CLASS.

H. HEDGEPEETH, PRESIDENT
R. DRANE, VICE-PRESIDENT
E. C. COCKE, SEC. AND TREAS.
J. A. SPEIGHT, HISTORIAN
C. E. HENDERSON, SURGEON

SOCIETIES.

DIALECTIC (Literary, secret) Established 1795, meets every Saturday night in the Di Hall, New West Building.

PHILANTHROPIC (Literary, secret) Established 1795, meets every Saturday night in the Phi Hall, New East Building.

ORDER OF THE GOLDEN FLEECE, (Senior).

ORDER OF GIMGHOULS, (Secret, Junior).

ORDER OF THE GORGON'S HEAD, (Secret, Junior).

FRATERNITIES, Secret.

DELTA KAPPA EPSILON
ZETA PSI
SIGMA NU
SIGMA ALPHA EPSILON
ALPHA TAU OMEGA
PHI DELTA THETA
KAPPA SIGMA
KAPPA ALPHA
PI KAPPA ALPHA
BETA THETA PI

ELISHA MITCHELL SOCIETY.

A. H. PATTERSON, PRES.
J. E. MILLS, VICE-PRES.
F. P. VENABLE, COR. SEC.

A. S. WHEELER, REC. SEC.

UNIVERSITY COUNCIL.

A. H. WOLFE, CHAIRMAN

B. C. STEWART

F. P. BARKER

J. F. SPRUILL

PHILOLOGICAL CLUB.

J. F. ROYSTER, PRESIDENT

W. S. BERNARD, VICE-PRESIDENT

L. R. WILSON, PERM. SECRETARY

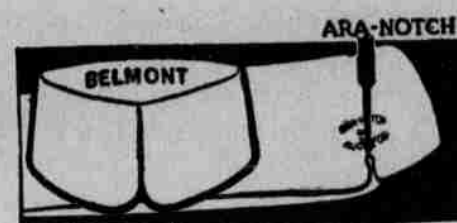
C. HOWARD, SECT. AND TREAS.

PHI BETA KAPPA.

J. P. NASH, PRESIDENT,

A. H. WOLFE SECRETARY,

T. J. WILSON, JR., TREASURER.



The "Ara-Notch" makes the "Belmont" an **ARROW COLLAR**
Sit Perfectly
15c, 2 for 25c. Cluett, Peabody & Co., Makers
ARROW CUFFS 25 cents a pair

A. G. SPALDING & BROS.

The Spalding Trade-Mark



is known throughout the world as a **Guarantee of Quality**

Are the Largest Manufacturers in the World of

Official Equipment For All Athletic Sports and Pastimes

If You are interested in Athletic Sports you should have a copy of the Spalding Catalog. It's a complete encyclopedia of What's New in Sport and is sent free on request.

A. G. Spalding & Bos.
74 N. Broad Street
Atlanta

G. C. Pickard & Co.

LIVERY STABLE

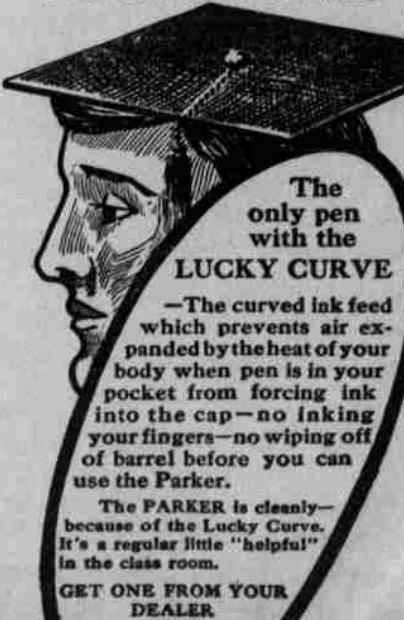
Located on Rosemary St., near Telephone Exchange. Stylish turnouts always on hand.

WANT A TEAM, CALL 307

G. C. Pickard, Manager

PARKER

FOUNTAIN PENS



The only pen with the **LUCKY CURVE**

—The curved ink feed which prevents air expanded by the heat of your body when pen is in your pocket from forcing ink into the cap—no inking your fingers—no wiping off of barrel before you can use the Parker.

The PARKER is clean—because of the Lucky Curve. It's a regular little "helpful" in the class room.

GET ONE FROM YOUR DEALER

PARKER PEN CO.
JANESVILLE, WIS.