

**ARCADE BARBER SHOP,**  
DURHAM, N. C.,  
NOW HAS  
4 First-Class Barbers.  
The Best of Everything in the Most Approved  
Sanitary Manner.  
ALBERT CRESS, Prop. T. C. BLAND.  
W. L. BOWLING. R. H. WILMOTH

**G. C. Pickard & Co.**  
LIVERY STABLE

Located on Rosemary St. near telephone  
Exchange. Stylish turnouts  
always on hand.

WANT A TEAM? CALL 30  
G. C. Pickard, Manager

**Norfolk Southern Railroad**

Travel via Raleigh (Union Station)  
and Norfolk Southern Railroad to and  
from all points in Eastern North Carolina.

Schedule in effect December 18,  
N. B.—The following schedule figures  
are published only as information and  
are not guaranteed.

**Train Leaves Raleigh**

9:15 p.m. Daily "Night Express"  
Pullman Sleeping Car for Norfolk.  
6:15 a.m. Daily for Wilson, New-  
bern, Washington, and Norfolk.  
6:15 a.m. Daily, except Sunday, for  
Newbern via Chocowinity.  
3:00 p.m. Daily, except Sunday, for  
Washington.

**Trains Arrive Raleigh**

7:20 a.m. Daily—11:20 a.m. Daily  
except Sunday and 8:00 p.m. Daily.

**Trains Leave Goldsboro**

10:15 p.m. Daily "Night Express"  
Pullman Sleeping Car for Norfolk, via  
New Bern.  
7:15 a.m. Daily for Beaufort and Nor-  
folk—Parlor Car between New Bern and  
Norfolk.  
3:20 p.m. Daily for New Bern, Ori-  
ental and Beaufort.  
For further information and reserva-  
tion of Pullman Sleeping Car space, ap-  
ply to D. V. Conn, S. P. A., or J. E.  
Kenworthy, U. T. A., Raleigh, N. C.  
W. R. Hudson W. W. Croxton,  
General Supt. Gen. Pass. Agt.  
Norfolk, Va.

**SNEED-MARKHAM-**  
**TAYLOR CO.,**  
Durham's  
Great Clothing  
Store.

Which for You?  
**BROWN, GRAY, OXFORD**  
**BLUES**

All here in Suits and  
Coats.  
**\$15.00 to \$25.00.**  
**Allison and Blackstock,**  
Agents.

**UNIVERSITY OF VIRGINIA.**  
**Department of Medicine.**  
A four year course is given. Dispensary  
and hospital with over 100 beds, both  
owned by the University.  
Send for catalogue.  
HOWARD WINSTON, Registrar,  
University, Va.

The Work Done by the  
**ZINZENDORF**  
**LAUNDRY,**

IN WINSTON-SALEM,  
Is meeting with the approval of  
FACULTY and STUDENTS. Give  
it a trial.  
Collars - - - - - 2c.  
Cuffs (pair) - - - - - 4c.  
Shirts plain - - - - - 10c.  
Shirts cuffs attached - - - - - 12c.  
Shirts dress - - - - - 12c.  
Work collected Monday nights. De-  
livered Friday nights.  
M. R. DUNNAGAN Agent.

**The Jefferson,**  
Richmond, Va.

The most magnificent Hotel in the  
South.  
European plan.  
400 Rooms. 300 Baths.  
Rooms single and en suite, with and  
without baths.  
Turkish and Roman Baths.  
Spacious Sample Rooms.  
Large Convention Hall.  
Rates \$1.50 per day and up.

**WASHINGTON AND LEE GOES DOWN IN DEFEAT**  
Continued from First Page.

gained four yards on a tackle  
play, and Washington and Lee  
fumbled, Tillett falling on the  
ball.

Winston gained a couple of  
yards around left end before over-  
taken and tackled by Miles. Til-  
lett punted thirty-five yards.

Malcolm attempted a split  
tackle play on the right side of  
the line, but he was tackled fier-  
cely by Abernathy before he had  
reached the line. Washington  
and Lee was penalized for holding  
in the line, and Francis attempted  
to get off a forward pass, which  
was intercepted by Winston, who  
carried the ball for ten yards be-  
fore tackled.

Carolina worked the ball to the  
opposing ten-yard line, and  
Washington and Lee held for  
downs. Francis stepped back for  
a kick formation, but his punt was  
blocked by Abernathy, and Rafer-  
ty fell on the ball with four of  
the Carolina team on top of him.  
A safety was called and the ball  
was brought out and the rest of  
the quarter was a hard fight in  
the Washington and Lee territory.  
This was Carolina's period.

**THE LAST QUARTER A GAME**  
**STRUGGLE.**

The real battle of the game  
came in the last quarter and it  
was then that the Lexington team  
showed their full fighting qual-  
ities.

Washington and Lee then be-  
gan a fierce march up the field  
towards the Carolina goal. Miles  
made 6 yards on a tackle around  
tackle play and Slater ripped off  
a run for 30 yards around right  
end. Miller was brought back  
and was sent through right guard  
for seven yards. Miles failed to  
gain on a tackle play and Miller  
again crashed through the line  
for a fifteen yard gain. This  
placed the ball within the Caro-  
lina 5-yard line and it looked like  
a sure score. Then came the  
fumble and Coffin got off a beau-  
tiful punt from behind his goal  
line.

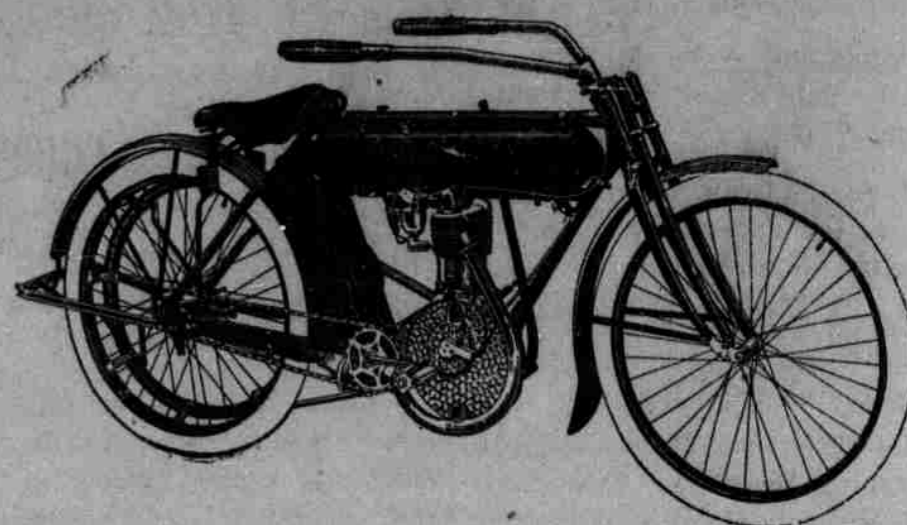
With the ball in the middle of  
the field Washington and Lee  
made another desperate effort to  
take the ball to striking distance  
of the Carolina goal. The time  
was short and the Carolina men  
were in every play. Washington  
and Lee pulled off a couple of  
forward passes, which netted 25  
yards and Ritch was sent in at  
center to replace Crutchfield.  
Washington and Lee attempted  
a couple of passes, which failed,  
and took all the heart out of their  
supporters. Slater punted out  
of bounds and the whistle blew  
for the end of the game. The  
last quarter was in favor of  
Washington and Lee.

**"Who Let Cowell Through?"**

In a closely contested game,  
played to the refrain of "Who let  
Cowell through," the seniors  
managed to defeat the juniors by  
the score of 5 to 0. The cham-  
pionship depended on the result  
of the contest, and each team  
went in with the proper scrapping  
spirit. The fearless warriors of  
1912 nobly upheld the honor of  
the class and proudly defended  
its reputation of never having  
had its goal line crossed but once  
in its history. The juniors suc-  
ceeded in living up to 1913's repu-  
tation of never having won a  
football game.

Young man, pretty maid,  
Tunnel came, and then the shade—  
Not this time, so take no fright—  
Porter came and lit the light.  
—E.S.

**Ride a Yale, They Never Fail.**



Quicker, safer and lots  
cheaper than a horse and  
buggy.

We have a sample and competent demonstrator to show  
you about if you are interested; if you are not, come in and  
let us talk to you and you will be.

**H. A. GASKINS, Agent.**

**J. R. CREEL, Sales Manager.**

DURHAM, - - - - - N. C.

Typewriting Mimeographing

**I. M. BAILEY,**

No. 7 South

**GUARANTEED SATISFACTION**  
**REASONABLE RATES**

**L. F. HANES,**

**OFFICIAL PHOTOGRAPHER,**

**UNIVERSITY OF NORTH CAROLINA.**

Season 1911-1912.

**GREENSBORO, N. C.**

**Andrews' Cash Store Company,**

Dealers in WALK-OVER SHOES, STETSON HATS,  
ARROW BRAND COLLARS, CLUETT'S SHIRTS.

Notion Novelties of all kinds. Invite the Student and Faculty  
trade to give us a trial. We are here to please YOU.



Imperial Hat



Imperial Hat

Boys, they've come Get them now  
before your size has been sold.

**AT KLUTTZ'S**

**BOYS! SEE "LONG" BILL JONES**

For Pressing and Cleaning. Work done satisfactorily. \$1.00  
per month. Repairing and darning neatly done at small  
extra cost. French dry cleaning a specialty.  
Shop in front of Athletic Store.

**HEADQUARTERS FOR STUDENTS.**

**WE WANT YOUR TRADE.**

We wish to thank all of our customers for the substantial trade that has been  
given us, and will appreciate more. We will serve you the best we can.

**UNIVERSITY SUPPLY COMPANY,**

**Velvet**  
THE  
SMOOTHEST  
TOBACCO



**10c** Full Two  
Ounce Tins

A REAL timber-topper this Vel-  
vet! It has hung from the  
timbers of the warehouse for over  
two years. This is to get rid of  
the leaf harshness—only time and  
patience can annihilate the "bite" in to-  
bacco. Velvet is perfect mellowness—  
a flavor delightfully good—superbly  
smooth. Sometimes when you are at  
the dealer's ask for "Velvet" and take  
a chance! It's only by comparison that  
Velvet is the smoothest!

**SPAULDING & MERRICK**  
CHICAGO