

# THE TAR HEEL

"The Leading Southern College Semi-Weekly Newspaper."

Member of North Carolina Collegiate Press Association

Published twice every week of the college year, and is the Official Organ of the Athletic Association of the University of North Carolina, Chapel Hill, N. C. Subscription price \$2.00 local, and \$2.50 Out of Town, for the College Year.

Entered at the Postoffice, Chapel Hill, N. C., as second class matter.

Editorial and Business Office, Room Number One Y. M. C. A. Building.

DANIEL L. GRANT ..... Editor-in-Chief  
H. C. HEFFNER ..... Assistant Editors  
WILLIAM E. HORNER ..... Assistant Editors  
JONATHAN DANIELS ..... Managing Editor  
WILBUR W. STOUT ..... Assignment Editor

### ASSOCIATE EDITORS

J. A. BENDER ..... J. G. BARDEN ..... L. D. SUMMEY  
HUME BARDIN ..... R. L. GRAY, Jr. ..... W. H. ATKINSON  
GEO. W. McCOY ..... J. Y. KERR ..... M. C. GORHAM  
J. G. GULLICK ..... J. I. WADE  
C. J. PARKER ..... THOMAS TURNER, Jr.

PHILLIP HETTLEMAN ..... Business Manager  
M. W. NASH ..... Assistant Managers  
C. H. STEPHENSON

### SUB-ASSISTANTS

W. S. HESTER ..... G. E. KIRKMAN  
J. E. RAGSDALE ..... M. Y. COOPER  
S. E. HOBBIE ..... LAWSON DAVIS  
H. L. BRUNSON

You can purchase any article advertised in The Tar Heel with perfect safety because everything it advertises is guaranteed to be as represented. We will make good immediately if the advertiser does not.

Vol. XXIX. Chapel Hill, N. C., Tuesday, February 22, 1921. No. 40

### YIELDING TO THE WRONG CAMP.

The demonstration in the gymnasium between halves in the Davidson basketball game calls again for action to build up here a consciousness that will permit no such insults. Has the time come when men of Carolina cannot respect the manager of the best basketball team that we have had during this college generation, and a man whose management of the team on the most ambitious trip ever taken challenges the capabilities and record of those who have preceded him? This is just another demonstration of the fact so often alluded to of late that this student body is yielding to the wrong camp.

Our student body is accurately representative of a rural state whose people on account of a lack of roads, have lived almost in isolation. Most of our students are drawn from these rural communities, and are seeking opportunities here for development that they have hitherto not known. We have known here on the campus in the past a striving on the part of these men to attain the standard of the smaller group in our life who came out of surroundings that furnished them with every opportunity for development. The pull has been constantly upward. The tendency has been to make things here in our life a reaching upward to attain the standard of the finest men, or group of men among us.

Now we unhesitatingly give way to the pull of the "hard boy." This class has no desire to reach upwards, and those above seem to follow the line of least resistance and be pulled down. But this is not the real life of a university community. The standard of Carolina is the standard of a gentleman.

Numerous other instances could be cited. It's no use to burden ourselves with them. Every man must know the forces that are pulling on him. The illustration freshest in our minds perhaps, with the possible exception of the ever-present barbaric demonstrations in the Pickwick that are a disgrace to the lowest strata of society, is that already referred to. Of course, we understand why this took place, but explaining it does not remove the fact that it occurred. Those who conducted the hissing are giving way to the lowest pull in them (we hope it is the lowest); or the unwary are giving way to the pull of the "hard boy" standard which some of our students emulate worthily.

We had rather have the team play its games behind closed doors, than to have the entire student body made a fool of, and the manager of a varsity team hissed from the floor. If we haven't enough respect for the varsity team and its manager to respect it, then we should have a change proceeding on a different basis from that of disgracing the whole student body in order to express an opinion by animal signs.

### NUMBER FORTY.

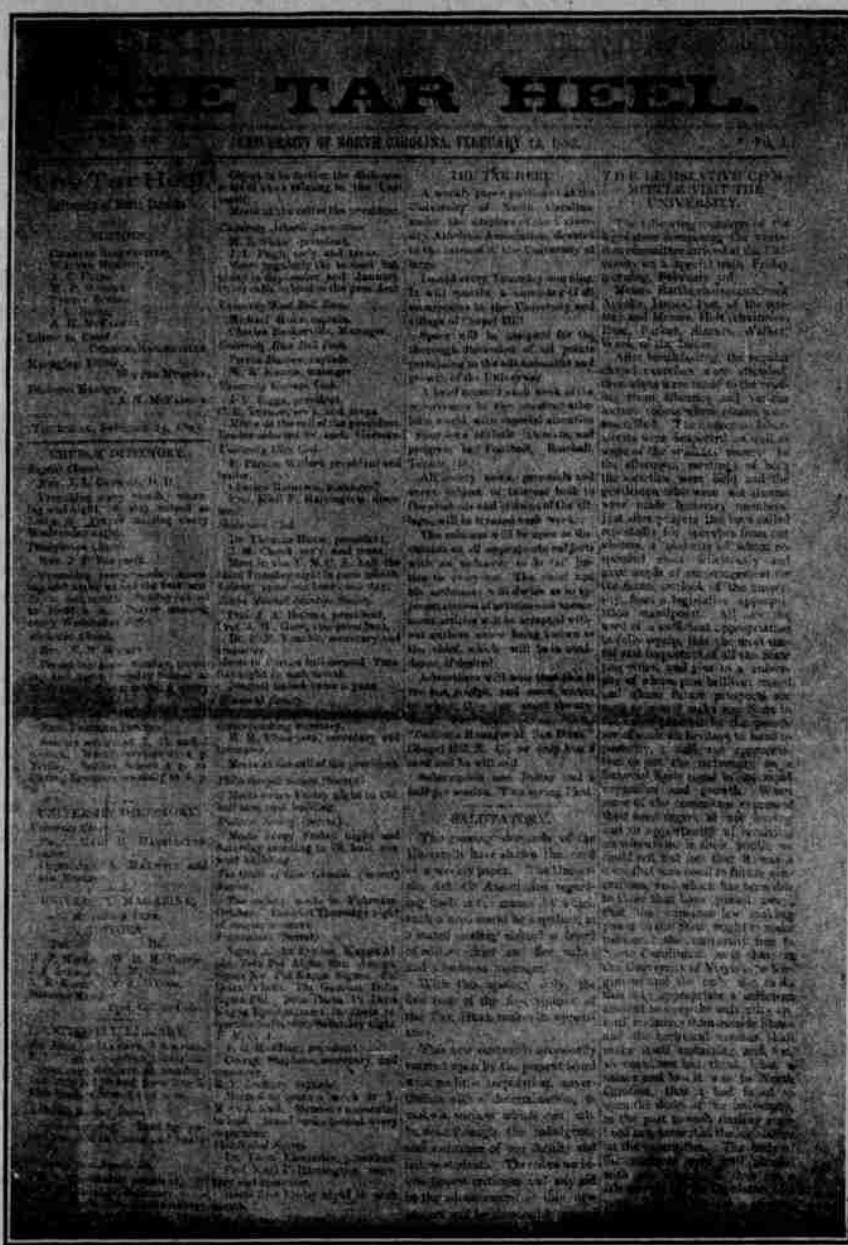
Two consecutive issues of the Tar Heel were numbered 36. Numbers 37 and 38 were issued before this was observed. Today we are issuing number 40. Number 39 will not be issued, and the gap will be bridged by beginning with the second number 36 and slipping each one forward until the desired results are obtained.

### OFFICERS ELECTED AT N. C. WOMAN'S COLLEGE

(N. C. Collegiate Press News Service)  
At the regular mass meeting, February 9, 1921, officers of the Student Government association were elected for the year 1921-22. From the list of capable candidates for the presidency, Marie Bonitz was chosen because of her competency, personality, democracy, and every other requisite for this office. Marie Bonitz has made an overwhelming success of everything she has undertaken during her three years in college. She takes part, with interest, in every activity on the campus—from athletics to Y. W. C. A. Eithusiasm kept up during the entire election. The other officers were voted on with just as much care as was the president. The president-elect is fortunate in having such a splendid staff of co-workers as the following: Vice-President Branson Price, Secretary May Bells Penn, Treasurer Susie Roberts, Fire-Chief Kate Mitchell, Cheer Leader Dorothy Clement, Chief Marshal Lila Ward Koonce.

### HENDERSON WRITES EXTENSION BULLETIN

The Bureau of Extension of the University has just published an extension bulletin entitled "The Teaching of Geometry" which was written by Dr. Archibald Henderson, Head of the Department of Mathematics of the University. In his introduction Dr. Henderson describes his purpose in editing this booklet as being the desire to bring a real description and explanation of the great branch of Mathematics to the students and teachers. He speaks of the important part that the subject played in the bombardment of Paris by the Germans, and how it became the direct and actual means of defending one of the greatest cities in the world from an attack, which, at its outbreak, seemed marked by an atmosphere of almost diabolic mystery and horror. The booklet is an exhaustive study of Geometry, its problems, aims and results, and the constructive problems of the study. This booklet will no doubt be of immense benefit to teachers and students of Geometry throughout the State.



Facsimile of First Tar Heel.

### AT THE PICKWICK

Thursday the Pickwick presents William S. Hart in "Sand." "Sand" is a story of a brave man's life and love. It tells of Dan Currie, ex-puncher, who leaves his outfit after a quarrel with the foreman, who strikes Dan's Pinto pony, Boss over the nose with a gun. Then there enters into the plot of the story a goodly number of Mexican bandits and other thieves, and a girl. William S. is well supported in this picture by Mary Thurman.

Dorothy Gish is presented at the Pickwick Friday night in "Flying Pat." The story is adapted from an original by Virginia Whitney. The character of the story is one of jazz-lit light comedy of young married life, presenting Dorothy Gish as a runaway bride and amateur aviator. According to the producers the speed of the picture is a mile a minute.

For the Saturday matinee the Pickwick will show a Cosmopolitan production "The World and His Wife," featuring Alma Rubens. It is a story of false scandal and true love, glowing with the color and gay abandon of Spain. The picture is played by a notable cast, including Montagu Love, Gaston Glass, Charles Gerard, Margaret Dale and Pedro de Cordoba.

Saturday night "The Great Lover," a Goldwyn production will be shown at the Pickwick. The story of a fascinating heart breaker of two continents, Jean Paurel, who found himself at last pleading in vain. The girl had promised to wed him, but her heart belonged to another. John Sainpolis and Claire Adams play the leading parts.

# Is North Carolina Poor?

## YES!

### Very poor in education and very rich in wealth!

One faction in the state is trying to tell the legislature how poor North Carolina is in wealth.

But you, who are in daily contact with North Carolina's poverty in education can tell the folks at home to tell their representatives in the legislature how much poorer we are in education than in wealth.

## Our Future Wealth Is Dependent On Education

# GOOCH'S CAFE

This advertisement is paid for by Gooch's Cafe