

## Tar Heels' 1925 Football Squad Makes Good Record

### LEAD IN STATE Fetzers Develop Many Players During the Season

#### FINE PROSPECTS NEXT YEAR Only Six Men Lost—Regulars and Reserves for 1926 Nucleus—Several Tar Baby Stars.

The Virginia game here last Thursday marked the close of the Tar Heels' most successful season since the 1922 team won the South Atlantic championship. During the season just closed the Carolina outfit after a mediocre start gathered power as the campaign progressed, and when the curtain fell on the final act they had a record of seven games won, one lost and one tied. As a result of that record the Tar Heels hold the 1925 state title, first ranking in the South Atlantic division of the S. I. C., and third place in the Conference, being bettered in the South only by Alabama and Tulane.

**Outstanding Players Developed**  
Not only in team records did the 1925 Tar Heels set up new marks, but the Fetzers brothers developed several new stars that stand high in the ranks of Dixie football players. Captain McIver, Robinson, McMurray and Dodderer were all mentioned by pickers of All-Southern eleven. Sparrow, Bonner and Underwood were also accorded mention among the backfield leaders. Five of the Tar Heel stars won berths on the mythical All-State, with four others mentioned on the second team.

"Stump" Robinson played a stellar game all season at tackle, and ranks in the minds of Dixie grid fans along with the greatest tackles the game has produced in the South. Playing as Robinson's running mate in the strong Carolina line was Captain Herman McIver, who played his last year in a Tar Heel uniform, and along with Robinson passes from the college gridiron, leaving a reputation as one of the hardest and cleanest playing men ever seen in the South.

Dodderer and McMurray were both rookies on the Carolina varsity, but both were accorded mention as outstanding ends, and the Fetzers brothers are expected great things of these two flankers next season.

Emmett Underwood was one of the few real triple threat men in Southern football this year. He was the most consistent man in the Carolina backfield, and his scoring power is attested by his ranking with the ten leading scorers in the S. I. C. His running mates in the backfield, "Rabbit" Bonner and George Sparrow, also played consistent football all the year and both have received several votes for All-Southern Atlantic positions.

Other men in the Carolina line-up deserving honorable mention are Whisnant, Braswell, and Morehead in the  
*(Continued on page four)*

## SMALL PER CENT OF CO-EDS SMOKE

Ten Per Cent of Dormitory Women Are Smokers.

### NO PROHIBITIVE RULE

Smoking Allowed in Students' Rooms But Not in Public.

By Eunice Erwin

The action of Bryn Mawr in legalizing smoking among the women students there by the removal of the rule against it and the establishment of smoking rooms in the dormitories led to a newspaper census among the women's colleges in the South to determine the social standing of the smoking habit among southern women students. The Associated Press sent out a review from the Atlanta office that declared in the words of Presidents and Deans of these institutions that not only do the colleges condemn smoking but that the students themselves do.

The reporters sent out as sleuths on the trail of the feminine student population of North Carolina obtained their information in regard to the smoking habit from both the front and back doors of the schools for girls. In view of those who guard the front doors smoking as a student crime ranks with treason as a governmental crime. It is punished with expulsion as treason is punished with death. This rule according to those who made it is obeyed. In the case of at least two institutions according to "back door" information supplied by clerks of drug stores mainly much bootlegging of cigarettes is done in those institutions where such strict rules have been made against cigarette smoking. Or, at least,  
*(Continued on page three)*

### Only One Team In Grid Schedule

According to an announcement made yesterday by Graduate Manager Charlie Woollen, the 1926 football schedule of the University will suffer but one major alteration, as it appears at present. The addition of Washington and Lee, the loss of Mercer, and the gain of the N. C. State game will be the only changes in the schedule.

Since the date of the Washington and Lee game is not definitely settled, none of the dates of the other games on the schedule are a fixity. And until the neophytes on the schedule are given a definite date the complete schedule will not be ready. At present Mr. Woollen has negotiations under way whereby the W. and L. game will be placed early in the season. It appears that refractory N. C. State came along and got the date that was originally given to the big Virginia University.

For a long time Mr. Woollen has been negotiating with the officials of the University of Georgia for a game with that institution. However, as has been in the past, these negotiations have proved futile. And Georgians will not be on the 1926 Tar Heel schedule, despite the assiduous efforts of the Athletic officials.

## PI KAPPA ALPHA TO BUILD HOUSE

Work Will Begin About First Of Year.

### ON FRATERNITY COURT

Will Be Two Story Building Of Colonial Style.

Work on the new Pi Kappa Alpha fraternity house, which will occupy the only remaining lot on fraternity court, will begin some time about the first of the year and the house will probably be completed by the end of the spring quarter. Some time in the near future the court itself will be levelled and beautified so that with the completion of this house it will present probably one of the most pleasing spectacles on the campus.

For some time Mr. Carter, architect of the Atwood and Nash office in Alumni Building, has been busy with the designing of the house and he is now putting the finishing touches to the plans. In keeping with the style of the four houses now clustered around the court the Pi Kappa's prospective home will be of the colonial mansion type. This will harmonize especially well with the present Sigma Nu and Sigma Alpha Epsilon houses.

The building itself will be a very prepossessing one. It will be a two-story structure of brick or brick veneer with attic space which will be utilized as a chapter room. The house proper will be 51 feet wide by 32 feet, with a 13-foot porch on each end, giving it a total frontage on the court of 78 feet. An ell will be extended from the north side which will be 39 by 23 feet.

In the center of the first floor will be a wide hall which will form the nucleus  
*(Continued on page four)*

## POLL ON WORLD COURT TO BE TAKEN MONDAY

Alva Taylor Will Speak on Subject Tomorrow Night in Gerrard Hall—Open Forum Follows.

A poll of the University students is to be taken next Monday in which they will express themselves in regard to whether they think the United States should enter the World Court. Alva Taylor will speak and conduct an open forum on the topic of "American Entry into the World Court" tomorrow night in Gerrard Hall at 8:30.

Mr. Taylor comes to the University under the auspices of the "Y". He has been engaged recently with Kirby Page in research work on international relations, the League of Nations, World Court, and other international problems. Ballot boxes will be placed at the "Y" and in front of the post office on Monday. The resulting vote will be sent to the World Court committee at headquarters and, together with the votes of numerous other colleges over the  
*(Continued on page four)*

## MARY D. WRIGHT DEBATE WILL BE MONDAY EVENING

Di and Phi Will Meet in Gerrard Hall in Annual Contest.

WINNER RECEIVES MEDAL  
Will Discuss Wisdom of Immigration Law of 1924 Excluding Japanese From This Country.

The Mary D. Wright Debate will be held on Monday, December 7, and not on this Friday as was previously announced. It will be in Gerrard Hall at 8:30 Monday evening.

The Mary D. Wright Debate is the big inter-society debate of the year, and is the only debate between the Di and Phi which is open to all the members. The other inter-society debates are strictly sophomore and freshman affairs. Besides the honors of winning the debate itself, the Mary D. Wright Debate also holds out an additional prize in the form of a valuable medal that is awarded each year to the best man on the winning side. The Phi has succeeded in carrying off the honors for the past three years.

The preliminaries in the two societies to pick the two teams were held some time before Thanksgiving; each society had nine men out trying for places. Out of her number, the Phi picked J. W. Crew, of Pleasant Hill, and R. W. Noe, of Beaufort, with Whitley as alternate. The Di has chosen as its representatives, M. I. Mogulescu, of Camden, and H. B. Parker, of Monroe, with Lee Kennett as alternate.

The query for the debate is, "Resolved, That the Japanese exclusion law should be so amended as to allow Japanese to come into the United States on the same basis as other nationalities."

At the present time the Japanese are excluded from the United States by a clause in the immigration law of 1924 that keeps out all aliens ineligible to citizenship except students, teachers, merchants, diplomats, and the like who do not enter for the purpose of settlement here permanently. As will be recalled, the passage of this law aroused a violent denunciation from Japanese everywhere, and threatened serious dip-  
*(Continued on page four)*

## PLANS ARE MADE FOR EUROPE STUDY TOURS

Membership in William and Mary Groups Restricted to College and University Students.

Elaborate plans for the third summer school in Europe are being made by the management of the William and Mary Study Tours in Europe, as a result of the enthusiasm over the trip which was shown by the members of last year's party. College students who have in the back of their heads any notion of spending the summer in Europe will find the summary of the plans well worth their attention.

Memberships in the William and Mary groups is restricted to college and university students, thereby insuring a congenial atmosphere. Three groups are being planned, among which it is expected that the most popular will be the Study-Travel group, one that has al-  
*(Continued on page four)*

## MUSIC DEPARTMENT TO GIVE CONCERT SUNDAY

Sunday afternoon at four o'clock, another concert will be given by the University Music Department in Memorial Hall.

This program, which is one of the Sunday concert series, will be given by the University Band and will feature Stanley P. Truselle, baritone, and Leonard R. Sides, cornet soloist. With this selection the officers of the department feel that they have arranged a program of unusual merit. The work of the two soloists, Mr. Truselle and Mr. Sides, is well known on the Hill. The gifted baritone and popular cornetist are musicians of real ability, and their appearance together on the program will be a great drawing card.

An enterprise of much importance has been the training of the University Band. Under the direction of Mr. McCorkle, this organization has made notable improvement. Today the company, composed of over fifty men is one of the most prominent features of the University's Music Department. This year the officers of the band have undertaken practices and schedules which have produced an organization with all claims to high rank as an orchestra of note also. The Band officials have begun arrangements for concert tours early next year. February is expected to bring a series of important engagements for the organization.

The Sunday concert will include a variety of delightful numbers. The program will range from famous, classical pieces to lighter compositions.

## "YES BY GOSH" TO BE GIVEN MONDAY

Bill Vaught's Popular Farce To Be Repeated.

### WIGUE AND MASQUE PLAY

Hal Kemp and His Orchestra Will Furnish Music.

The performance of the Wigue and Masque production, "Yes by Gosh", last year's great success will be given Monday night at 8:30 in Gerrard Hall. Mr. Weaver and the director of the club, Bill Vaught, feel especially fortunate in having as the orchestra for the musical show the famous Hal Kemp's Band.

Each year there has been an increasing popular demand in cities throughout the state for performances of the Wigue and Masque organization. Last year Bill Vaught's jovial scream, "Yes by Gosh", was exceptionally well received throughout the state. One dance and song number, "There is no Doubt About It", cleverly done by Gene Irwin and Bill Vaught was the hit of the show, being encored twelve times on the average.

The musical comedy, "Yes by Gosh", was written by the director of the Wigue and Masque, Bill Vaught, and the antics of the leading characters Elizory Shore, played by Ed Copeland and Harry, a drummer, enacted by Norman Condon range from the New York docks to the poop of the reliable ship S. S. Damfino to the golf links of far distant Tomania. Norman Condon, formerly a student in the university, who has for the past year and a half had a leading part in one of Shubert's musical shows came down to Chapel Hill in order to take a part in his first love, the Wigue  
*(Continued on page three)*

## THIRD NUMBER OF MAGAZINE BETTER

Reviewer's Best Word For It is Its Promptness.

### CONTAINS GOOD POETRY

Magazine Is Avoiding Controversial Subjects This Year.

Whether *The Carolina Magazine* does anything else this year or not, it seems that it is going to come out on time; for here is the December issue out during the last part of November, and we understand that the January issue is to appear by the 12th of December. So far as regularity is concerned it seems to be keeping schedule beyond all hopes.

We often wonder, however, whether it ever means any more than just coming out, or not coming out on time; that is, whether it would really matter whether it ever came out at all or not. At any rate, we are inclined to believe that the editor and the contributors derive far more benefit from it than anyone else.

According to certain rumors the author of the first article "These Perilous Times" did a considerable amount of research work—not only in books and magazines. The article is certainly written about an interesting subject and the author treats it in a fairly attractive way. However we believe it would have been more interesting if he had used fewer quotations and given more actual field experience.

His main thesis, namely, that flapdoodle, with all its excesses, is a species of vaccination, is to our mind an insupportable theory. If it were true, his study would constitute a distinct contribution to social control, to the scientific guidance and control of youth. But all youth does not act and react in the same way to the same stimuli. Our belief is that most youth will and does go to the canine terminus whenever opportunity is offered. Our only qualification of this is that most of them are already there and consequently have nowhere to go.

By far the best contributions to the December Magazine in our opinion were several poems signed "R. H.": "The Path of Pan," and "The Racer," so far as we know, may not illustrate perfectly the technique of poetic construction,  
*(Continued on page four)*

## VARSITY CAGERS START PRACTICE

Four Letter Men Back For Their Old Berths.

### DODDERER LEADS '26 TEAM

Schedule Includes Twenty-one Games Before Tournament in Atlanta.

The candidates for varsity basketball reported to the Tin Can Monday afternoon for the initial workout of the indoor sport season. With four lettermen back from the 1925 quint the prospects for the coming campaign are good, and the team bids fair to add to the already long string of honors that the Tar Heel basketball teams have brought to the "Hill" during the past five years.

Perhaps no other institution in the country can boast a more enviable record on the court than Carolina. The Tar Heels have won 67 games out of  
*(Continued on page four)*

## WARDE INTERPRET DRAMA 'MACBETH' TUESDAY EVENING

Noted Shakespearean Scholar Gave Reading In Playmaker's Theatre Tuesday.

### DEFENDS LADY MACBETH

Lady Macbeth Was Not Female Fiend But Was Desirous of Helping Her Husband.

On Tuesday night in the New Playmakers Theatre, it was the privilege of a small but enthusiastic group of people to hear the veteran Shakespearean actor, Frederick Warde, who made his second appearance at Chapel Hill. When here last year he proved to be the most popular and well received lecturer of the season, and his splendid interpretation of *Macbeth* given Tuesday night should assure him of a high and lasting position in the estimation of Carolina students. The manner in which he rendered the most important lines of Shakespeare's great tragedy was a revelation to the audience. Taking the main speeches of all the characters and interspersing them with clarifying explanatory remarks he skillfully built up the whole play and presented it as a vital and compelling entity. With only a slight effort of the imagination, it was possible to conjure up the sets and see the complete action of the drama unroll itself before you as Mr. Warde delivered the lines in his powerful and expressive voice. His gestures as well as his tones were perfectly fitted to the various roles he portrayed and the audience frequently burst into applause as this or that well known quotation came from his lips.

In the course of his dramatic lecture, Mr. Warde made several observations of telling insight which deserve to be recorded. One of his main themes was a defense of Lady Macbeth, whom he considers an extremely misunderstood and unappreciated woman. Most people and most critics think of her as a fiend in female form who commits crimes for the pure love of it and has no conscience or scruples. According to Mr. Warde this is cruel misjudgment; he thinks of her as a basically good woman who with deliberation asks the powers of evil to change her to a fiend so that she may be able to aid her husband in pursuit of his overmastering ambition. Another excellent pointer was given on the way best to determine the true status of Shakespearean character. "Take the character's first soliloquy and study it carefully," he said, "Whatever he or she is will be revealed there." Another bit of philosophy was interesting for the application it may suggest to college students. "When mature persons use terms of endearment they are sincere about them," Mr. Warde declared. "They are  
*(Continued on page four)*

## SANFORD AND GASTONIA MEET HERE SATURDAY

Champions of East and West to Battle For State Hi Football Championship Here Saturday.

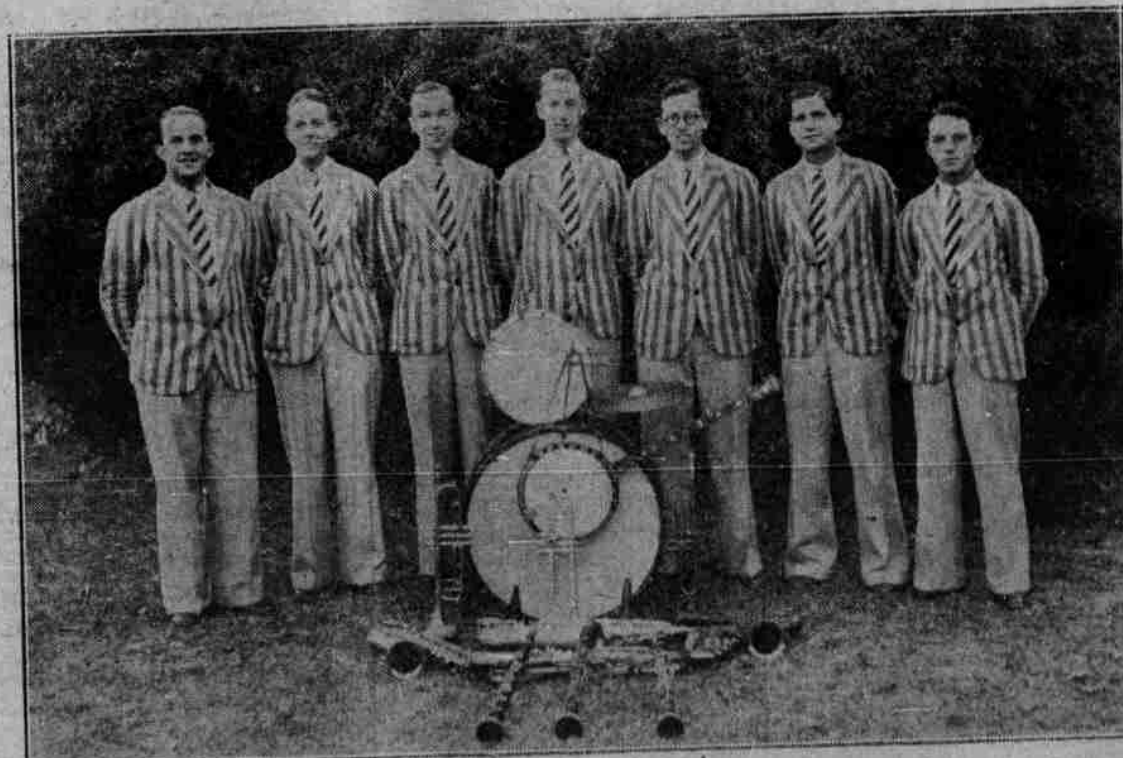
The Sanford High School football team, champions of the Eastern section of the state, and the Gastonia High football team, champions of the west, will meet in Chapel Hill to decide the championship of the entire state this Saturday. Gastonia represents the west by virtue of its 10 to 0 victory over Greensboro at Salisbury, while Sanford secured a 7 to 0 decision over Rocky Mount at Raleigh Tuesday afternoon in the playoff of the tie which resulted from the first game Saturday.

The game this year will be of great interest as neither of the two contenders for the state honors have held the championship in the past. Two years ago Sanford won the Eastern title but was defeated on Emerson Field by Charlotte in the final game. Gastonia comes to Chapel Hill this year for the first time. Advance dope names Gastonia as the favorite, and the Gaston County boys are confident of winning by the margin of two touchdowns, according to reports received yesterday.

These teams reach the finals from a field of forty-three starters. The contest this year has been featured by an unusual number of tie games. In the semi-final rounds of the two sections three or four games resulted in deadlocks. Again in the finals for the Eastern championship Rocky Mount and Sanford struggled through five quarters to a scoreless tie, the play-off resulting in the 7 to 0 victory for Sanford mentioned above.

The game in Raleigh, Tuesday, was decided virtually by a lucky break  
*(Continued on page two)*

## HAL KEMP'S BAND



HAL KEMP'S BAND, WIDELY KNOWN DANCE ORGANIZATION WHICH IS A FEATURE OF "YES BY GOSH," IN MEMORIAL HALL NEXT MONDAY