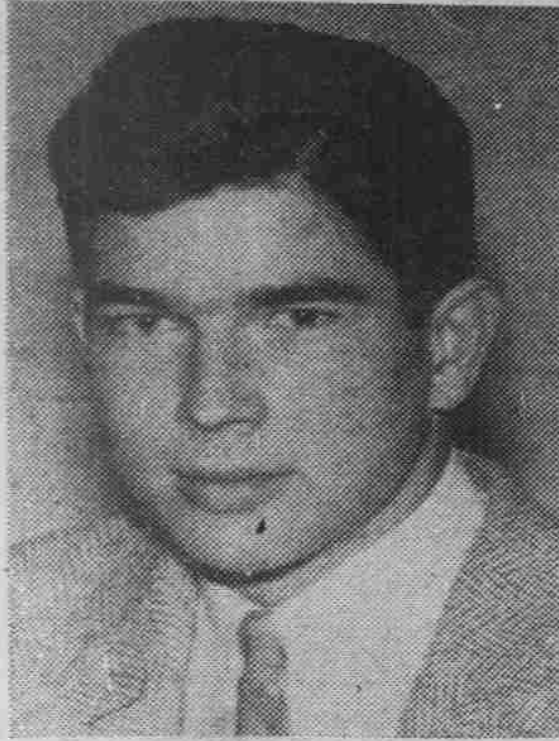


## UP Slate Paves Way For Approaching Elections



BENBOW



VANCE



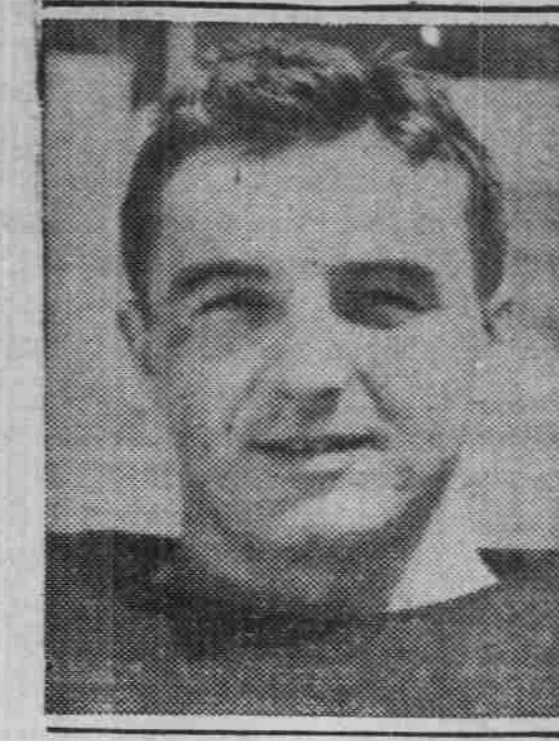
CARTER



HARTZELL



NOURSE



RODGERS

### Fairy-like Air Marks Opening Of Night Spot

By W. H. Hipps, Jr.

Lacking only the insignificant ingredient, wine, the Saturday opening night atmosphere at the "24-Below Club" may be described by the title of the currently popular hit tune, "Candlelight and Wine."

When each patron had negotiated the 24 steps, from which the club derives its unique name, to locate very easily the club in Graham Memorial basement, he found himself in a world totally unlike that of books, studies, and teachers which concern him almost all of the time.

He entered by the magic of recorded music which came floating out into the well-lighted hall, transforming it into a half-real world. In the dim, soft, melow-yellow light furnished by the steady, flickering flame of the candle which stuck out of what appeared to be a large-mouthed beer bottle on each individual table for two, the dancing figures looked like over-sized shadowy elves and fairies. One blonde coed in particular lent a fairy-like atmosphere to the place as she danced gracefully around in a long, white evening dress.

The "24-Below" Club needs musicians, comedians, entertainers for its program every Saturday night from 9:30-12:00. It especially needs musicians who have played with dance bands, although anyone who can do anything entertaining will be welcomed. All interested persons should contact Julia Funk, chairman, or any other member of the men-women relations committee of the YWCA.

#### Thermometer

The first thing that met the gaze of the patron was a large cardboard thermometer about three-fourths the size of an ordinary door. The red mercury in the tube stood at 24 degrees, while on either side of the tube was an outlined arrow pointing toward the tube. Inside the outline of the left-hand arrow was the number 24.

See NIGHT SPOT, page 4

### Dramatist Porcher Played Role of Kitten in Debut

By Sophia Sue Duffy

First Carolina undergraduate to have a fellowship and first woman to be stage manager of the Playmakers is her official record.

Cropped light brown hair, a hearty laugh that echoes through Harry's at lunch time, and a varied assortment of cuss words... that's Nananne Porcher. Her natural habitat is the Chi Omega house or the Playmaker theatre where clad in cover-alls, she may be doing anything from lugging scenery around to teaching a lab in stage lighting.

Nananne hails from east Florida, Cocoa, on the Indian river. Her dramatic career began at the age of three when she played her first role as a kitten. At a later pageant she took the part of Prince Charming in "Cinderella in Fairy Land." She had the lead in her senior play in high school and at the same time was technician, devising dimmers out of battery jars. However, Nananne emphatically claims she is not an actress.

Nananne went to Bernard College, Columbia University, for two years.

### University Party Slate

PRESIDENT OF STUDENT BODY: Charlie Frank Benbow  
SPEAKER OF LEGISLATURE: Charlie Vance  
EDITOR OF TAR HEEL: Horace Carter  
EDITOR OF CAROLINA MAGAZINE: Shirley Hartzell  
EDITOR OF YACKETY YACK: Tyler Nourse  
PRESIDENT OF ATHLETIC ASSOCIATION: Hosea Rodgers  
VICE-PRESIDENT OF ATHLETIC ASSOCIATION: Bill Lee  
CHEERLEADER: Sam Latty  
DEBATE COUNCIL: Bill Mackie  
PU BOARD: Fred Flagler, Marian Kerr, and Cookie Marrett  
LEGISLATORS:

NAVY V-12: Charles Penick, Ed Gaither, John Yocum, Gleason Allen, Bob Johnson, Bob Kirby, Phil Gilbert, Dave Bjorseth, John Walker, Eugene Doar, Ed Peters, Eugene Jessup, Ted Ladutka, Bill McLean, Phil Ferrara.  
MARINE: Jim Goodwin, Jim Camp, Tom Lane, George Fox.  
NROTC: Charlie Hackney, Pat Taylor, Dick Elliot and Bill Ellis.  
TOWN REPRESENTATIVES: Whitfield Lloyd, Johnny Fishel, Dick Ferguson, Madison Wright, Ralph Eaton and Bob Gackley.

### Berryhill Says Survey Shows Medical Care Is Inadequate

#### Only One Doctor For Every 1600

"A survey shows that approximately one-third of the people of North Carolina do not receive adequate medical care and that the State ranks very low (42nd in 1942) in the number of hospital beds in proportion to population," Dean W. Reece Berryhill of the School of Medicine here, said in an address to the Chapel Hill Rotary Club at its meeting last week.

Dean Berryhill was discussing some of the points in the state-wide hospital program recently advocated by Governor J. M. Broughton.

#### One Doc for 1600

The number of doctors in proportion to population is 1 to 1600 for North Carolina as compared to 1 for 800 for the nation, Dean Berryhill said in explaining the need for expanding present facilities for medical care. In some counties of the State, he added, there is only one doctor for 5,000 people.

To meet this situation, he said, a group of doctors in the state has recommended that a large hospital be built to take care of the indigent and people in the low income group; that the course in the present school of medicine in the University be expanded from two



BERRYHILL

to four years; and that, in time, smaller hospitals be established in certain strategic centers in the State, in view of the fact that approximately three times as many hospital beds are needed as are now available.

#### Schools Insufficient

Although the two four-year schools, Duke and the Bowman Gray School of Wake Forest College, are doing splendid jobs in medical education, they do not begin to supply enough doctors, nurses, and other types of medical personnel, the speaker said.

There are only a few more doctors licensed each year on the average than are lost through death, retirement and removal to other states. At this rate it would take several generations to See BERRYHILL, page 4

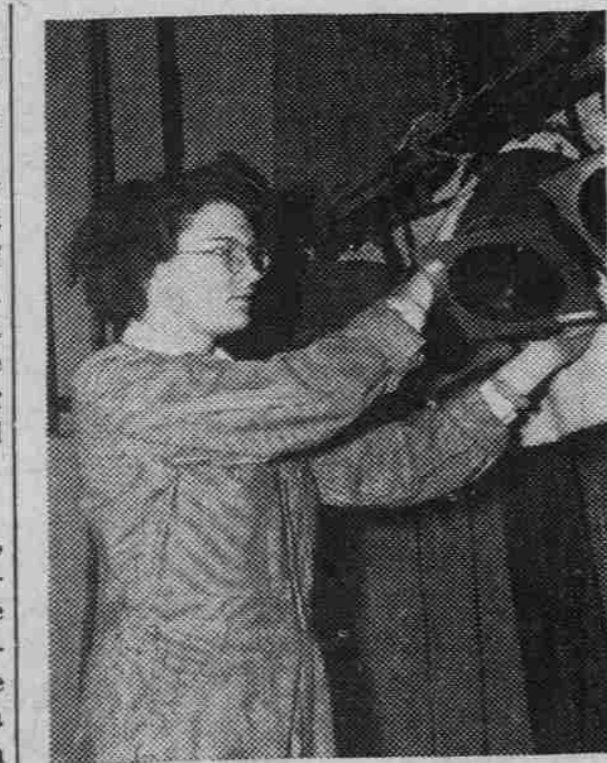
### April Fool Issue Generally Enjoyed

Saturday's April Fool issue of the TAR HEEL was well received and enjoyed according to the general census of opinion.

The front page which had the cartoon of a legislature trial was well approved by many who attended the legislature meeting earlier this year. "Vote For Frogden" was appreciated by those who knew the story behind the cartoon.

Pages two and three got less attention as numerous readers stated that they would like to see a similar issue composed of the material run on the front and back pages published every week.

Several readers commented that some of the sports news was actually believed until they realized that it was April Fool.



PORCHER

She was manager of the famous Greek games, an annual contest held between the freshmen and sophomores. These games, having as the theme one of the See PORCHER, page 4

### Benbow Nominated President As All Candidates Released

#### Vance, Carter, Hartzell, Nourse and Rodgers Chosen for Top Campus Posts

By Sara Yokley

### IRC Sponsors Campus Forum At GM Tonight

By Nancy Smith

Tonight at 8 o'clock in the Graham Memorial Lounge the International Relations Club will sponsor a campus forum on the topic "What Russia Wants in Europe."

Faculty members taking part in the forum include Dr. Helmut Kuhn, Dr. E. E. Ericson, Dr. Ervin Hexner and Dr. J. L. Godfrey. Moderator for the discussion will be Dean Francis F. Bradshaw. As usual the floor will be thrown open for discussion and questions by the audience.

#### Of Campus Interest

"The topic was chosen," said President Ann West, "because of the large amount of interest in the question that has been expressed on the campus."

Dr. Kuhn, now a professor of philosophy at the University, was born in Silesia. In the last World War he served as an officer with the German army from 1915 to 1919. When he returned to civilian life, he studied at Breslaw, Innsbruck and Berlin. He received his Ph.D. in 1923, and by 1930 was lecturing in philosophy at the University of Berlin. He was also secretary of the Kantian society at this time.

#### Niemoeller's Associate

In 1933 when the university was forced into "coordination" with the Nazi regime, he became associated with Pastor Niemoeller in the effort to oppose Pastor Niemoeller in the effort to oppose the Nazi regime.

After leaving Europe on a research award, he went to England and then to the United States. He has been with the University ever since.

#### Kuhn and Godfrey

Dr. Kuhn is the author of several books on philosophy and aesthetics including a collaboration with K. E. Gilbert of Duke University on "History See IRC, page 4

### Group Plans Entertainment

A ten man committee to plan entertainment for spring quarter was appointed this week by acting student body president Turk Newsome. The group is planning to reorganize the Sunday Night Sessions committee which provided weekly amusement for the campus last year. Dances, movies and other forms of recreation may also be sponsored.

Members of the committee are Nancy Smith, chairman, Kat Hill, Julie Funk, Harold Gould, Phil Gilbert, Tom Avery, Betty Lou Cypert, Joan Kosberg, Dennis O'Brient and Charlie Frank Benbow.

This newly formed committee will act in cooperation with the YMCA and YWCA and any other organizations which sponsor planned entertainment for the student body. They hope to aid in the establishment of the 24 Below Club as a Carolina hangout.

Any suggestions for various kinds of entertainment will be welcomed by the committee at any time.

### Mass Meeting

A mass meeting of first year V-12, Marine, NROTC and civilian students is scheduled for Wednesday night at 7 o'clock in Gerrard hall.

Captain W. S. Popham, Dean R. B. House and Albert Coates will speak and faculty members have been asked to attend.

### Total of 77 Men Pledge Social Frats on Sunday

A total of 77 men pledged social fraternities as listed from the office of Dean of Men, Sunday, April 2.

The Chi Psi and the Phi Kappa Sigma fraternities led the pledges with twelve each, while the Phi Delta Theta chapter was in second place with eleven men pledged.

A list of the men who pledged is as follows:  
ALPHA TAU OMEGA—Kendrick Scott, Wyncote, Pa.; William Wyatt, Columbia, Mo.; Bob Johnson, Lexington, Mass.; William Wolf, Mt. Carmel, Ill.  
BETA THETA PI—Arthur Lewis Sprott, Lakeland, Fla.; Wilson M. Miles, Danville, Va.  
CHI PSI—Carey Dobbs, Pinehurst; Ed Gunion, Oakland, Cal.; Ralph Ball, Richlands; Eddie Cox, Jonesboro; Max Abbott, Bryson City; Linwood Stone, Lumberton; Branson Mills, Baxley, Ga.; Dellmer Seiter, Wilmington; Robert E. Williams, Wilmington; William H. Johnson, Mt. Airy; Howard Valen-

tine, Winston-Salem; Donald A. Wakefield, St. Louis, Mo.

KAPPA ALPHA—Martin Paul Kerchell, Fairmont, W. Va.; John T. Moore, Lenoir.

KAPPA SIGMA—Albert M. Slaton, Hattiesburg, Miss.; Harvey Hamilton, Morehead City; Hugh Linton, Nashville, Tenn.; H. H. Grother, Savannah, Ga.; Ray Cochrane, Concord, N. C.; Robert Fahey, Wilmington, Del.; Donald Hadermann, Charlotte; Bert Cantrell, Manchester, Ga.; Herman Bottom, Hammon, Okla.  
PHI DELTA THETA—David A. Nichols, Durham; James Coppridge, Durham; Shirley W. Green, Hogan, Fla.; Lem Doss, Wilmington; George Johnston, Jr., Wilmington; Robert M. Williams, Wilmington; Edward Davis, Wilmington; Joseph Mallard, Trenton; Evert Clark, Chevy Chase, Md.; W. Leroy Ward, New Orleans, La.; Clive Thompson, Washington, D. C.  
PHI GAMMA DELTA—Thomas B. See PLEDGES, page 4

### Group Plans Entertainment

Heading the list of candidates for the campus' top post of student body president is Charlie Frank Benbow from Winston-Salem. For two years he has been a member of the student council and has kept an honor roll average during his three years at Carolina. Benbow is a member of the SAE social fraternity, Gimghoul, Grail, student audit board and a former member of the Carolina boxing team. He has served on the freshman finance committee, the sophomore honor council and dance committee and this year on the student recreation, student entertainment, and War Relief committees.

#### Charlie Vance

Charlie Vance, candidate for the speaker of the legislature also hails from Winston-Salem. He is well acquainted with the machinery of the legislature, having served this year as parliamentarian and chairman of the ways and means and rules committees. Vance belongs to the Sigma Nu fraternity and the Grail. He is treasurer of the Interfraternity council, manager of the sophomore football team and has maintained an honor roll average at Carolina.

A former Carolina student, who returned to the campus from the fleet, V-12 Horace Carter is the choice for editor of the TAR HEEL. Journalism major Carter has a long record as a newspaper man. For the past five years he has free lanced for a myriad of North Carolina papers and has been on the staff of the News and Press in his home town Albemarle, the Winston-Salem Sentinel and the Navy paper in Charleston. At Carolina he has worked for two years in the University News Bureau and has served as night editor, sports editor and managing editor of the TAR HEEL.

#### Coed Candidate

The only coed nominated for a publications job is Shirley Hartzell from Bristol, Va., candidate for editor of the Carolina Mag. If elected Miss Hartzell would continue the feminine dynasty of the Mag, following in the footsteps of Olive Price Charters and Lois Ribelin Cranford. At Sullins junior college where she spent her first two years, Miss Hartzell was day student editor See BENBOW, page 4

### Captain Popham Presents Award

At a meeting of all V-12 men held Friday night in Memorial Hall, Captain W. S. Popham, V-12 commanding officer, presented a citation to Captain Hendricks of the "USS Philadelphia." The citation was awarded by the Navy in recognition of the vessel's meritorious service in the Atlantic and Mediterranean.

The program also included a 15-minute movie on saluting and an explanation of the procedure for drawing pay.