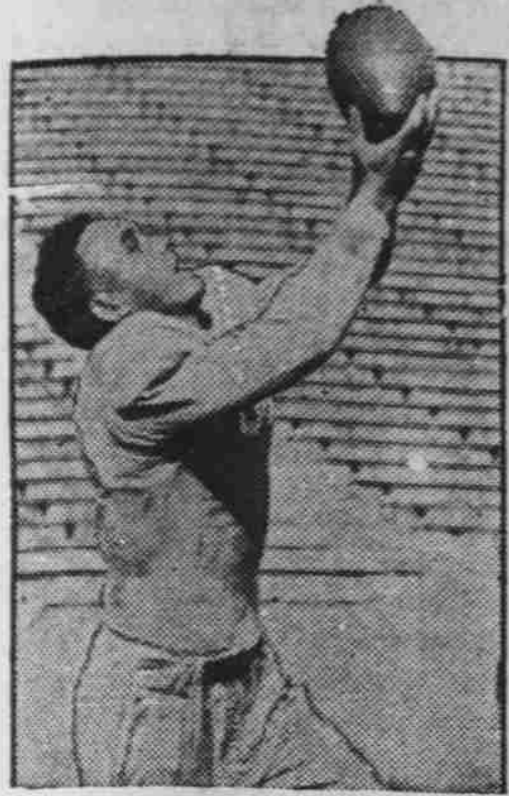


# 'The Devil With The Devils,' Say They



Paul Severin, End



Dick White, Tackle



Jim Woodson, Guard



Chuck Slagle, Guard



Gates Kimball, Tackle



Jim Mallory, End



George Radman, Halfback



Bob Smith, Center



George Stirnweiss, Quarterback



Jim Lalanne, Quarterback



Harry Dunkle, Fullback



Mike Bobbitt, Halfback

# DUKE TODAY; KYSER HERE!

Kay Kyser, Carolina's most popular alumnus, returned to the campus last night and gave students a sample of the cheerleading that has obtained for him a permanent place in University annals.

He and his party will also appear at the Duke game today.

"I want the school to know we have followed its activities by means of the papers and radio and that we have been 'thinking of you' even when we weren't here," he said last night. "It did my heart good to see that Carolina still has the good old spirit. It's still the greatest place in the world."

David Butler, director of Kyser's new picture and also a score or more of Hollywood's best productions in the last ten years, who is remaining especially for the game, said last night, "I've finally found the campus that has the atmosphere and the traditional appearance of a campus that a moving picture director dreams about but never expected to really exist."

Over 5,000 persons jammed into Fetzer field stadium for last night's rally, which will probably be known as one of the greatest in history. While President Frank P. Graham was addressing the assembly, Kyser suddenly appeared in front of the speakers' stand and received a tremendous ovation.

With flushed face, the drawing orchestra leader who has led his organization from a college swing club to one of the nation's top-flight bands mounted the rostrum and vigorously embraced some of his old friends.

Then he proceeded to lead the crowd in the most enthusiastic cheering in years, and promised more of the same today.

The largest bonfire in Carolina's history and a continuous barrage of fireworks threw shadowy lights over the assembly.

Thundering applause also greeted senior members of the football team, who will play in their last Carolina-Duke game today.

Other speakers were: Judge "Scrubby" Rives of Greensboro, former president of the student body and cheerleader; Ray Farris, guard on the all-time Carolina eleven; Pete Murphy, member of the state house of representatives and the first University football team; Co-captains George Stirnweiss and Jim Woodson; and Ginny Simms, brunette vocalist with Kyser's orchestra.

Welcome home, Kay, and all your party.

## Little Ray Of Sunshine



Kay Kyser last night termed Head Coach Ray Wolf "A little ray of sunshine." We hope the term is appropriate for the next 24 hours. If it is, you will be looking at his picture again tomorrow morning, as always after his team wins.

CAROLINA	Position	DUKE
Severin	le	Perdue
White	lt	Ruffa
Woodson	lg	Johnson
Smith	Center	Burns
Slagle	rg	Ribar
Kimball	rt	Winterson
Mallory	re	Bailey
Stirnweiss	qb	Prothro
Radman	lh	G. McAfee
Bobbitt	rh	W. McAfee
Dunkle	fb	Robinson

By SHELLEY ROLFE

Raymond B. Wolf, who in the short space of four years has become recognized as one of the outstanding football teachers in the nation, leads an undefeated, underdog University of North Carolina team into its most important battle of the season against once-beaten Duke at Duke stadium this afternoon at 2 o'clock.

With the winner picking up Southern conference and sectional honors and a possible bowl bid, the game, as has every one in the series, should be a thrilling battle between two geared offensive machines from start to finish. More than 50,000 fans, setting an attendance record for Southern football, are expected to crowd and jam their way into the Blue Devils' gridiron horse-shoe to watch the Tar Heels' aerial advance, most versatile in the nation, crash up against the Duke ground attack, mastered by the McAfee's.

### RADMAN, SEVERIN WILL START

Productive in the past of the bitterest feud in Southern football, this year's game may yet have to be fought not on the football field but in the nearest arnica plant. Carolina goes into the game with one man out of action for good and three moving at half-mast. Chuck Kline, who performed 58 minutes in 1937 when the Tar Heels last humbled Duke, has been out for three weeks with a bad knee. George Radman and Paul Severin, hurt against Davidson last week-end, will probably start for Carolina, but neither will move at top speed. Don Baker, slated to move in on Radman's half-

(Continued on page four)