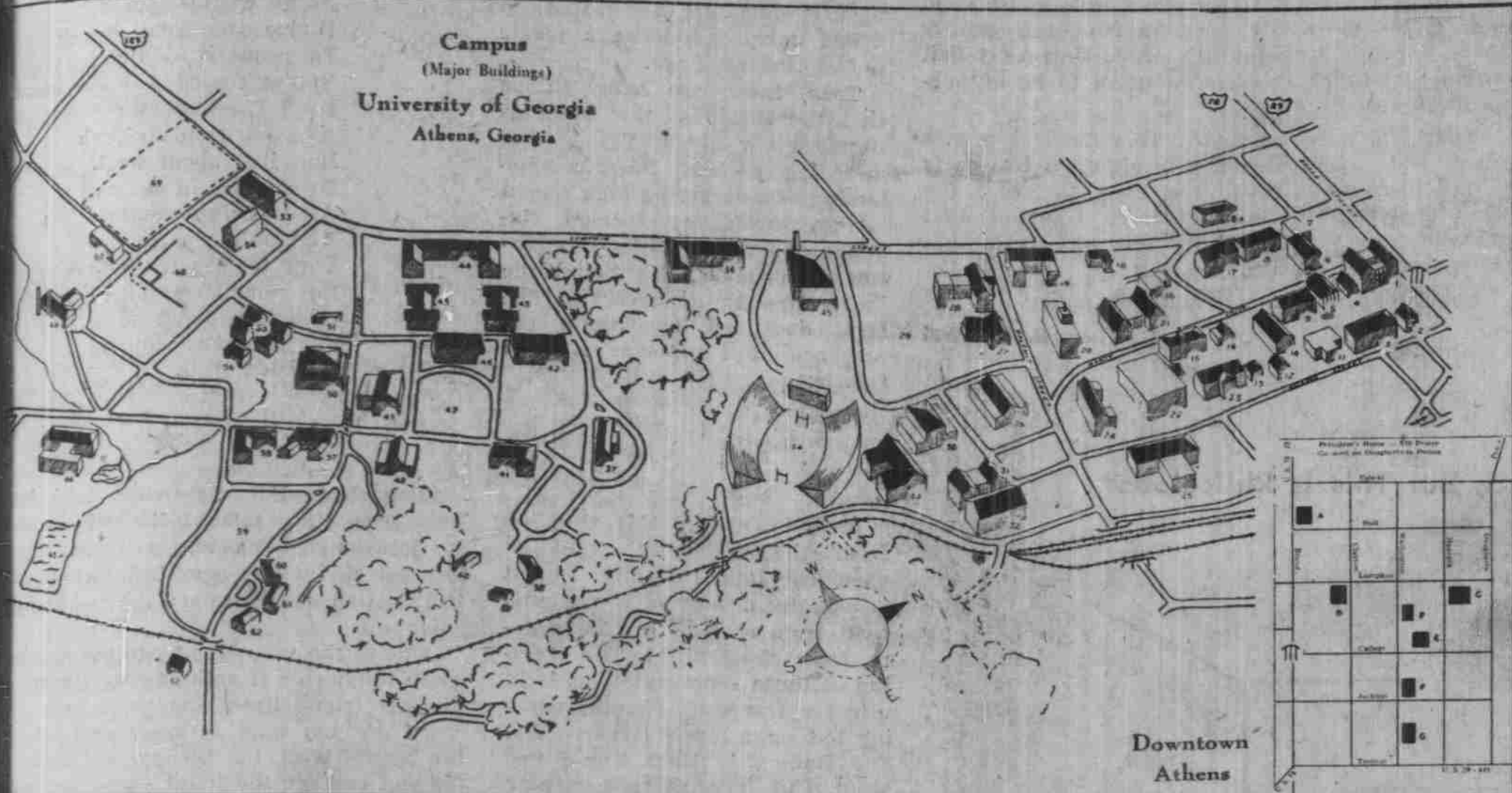


Tar Heels Descend Upon Georgia's Surf Today In Annual Caravan Game; Without Train, With Lots Of Spirit



IT'S JUST A STROLL FROM THE ARCH TO SANFORD STADIUM
...and between them there's the law school, Co-Op, Joe Brown Dorm

Campus: From The Arch To The Practice Football Field

Here's the key to the University of Georgia campus. Figures match up with figures on the map:

Building	54	Meigs Hall	7
Building	1	Memorial Hall	30
Building	53	Military Building	27
Building	47	Milledge Hall	31
Building	25	Milledge Hall Annex	32
Building	41	Museum of Art (old library)	11
Field	68	Myers Hall	44
Hall	8	Nursery School	56
Hall	5	Old College	10
Dormitory	36	Park Hall	20
Building	21	Peabody Hall	23
Building	37	Pharmacy School	9
Building	13	Physical Education Bldg.	49
Building	58	Phi Kappa Hall (bookstore)	2
Hall	42	Physics Building	38
Hall	4	Plant Pathology Building	38
Hall	16	Poultry Building	52
Hall	62	Practice Football Field	69
Hall	61	Pre-Fab Area	59
Building	28	Reed Hall	33
Processing Plant	40	Rutherford Hall	43
Building	57	Sanford Stadium	34
Hall	60	Snelling Hall	50
Hall	48	Soule Hall	46
Management Houses	55	Stegeman Hall	35
Building	17	Student Store	51
Dormitory	19	Terrell Hall	3
Building	63	Track	3
Building	18	Veterinary Medicine Bldg.	64
Building	66	Woodruff Hall	26
Building	8-A		
Building	15		
Building	14		
Building	24		
Building	22		
Building	12		
Building	45		
Building	39		

Key To Athens

A	Bus Station
B	Holman Hotel
C	Post Office
D	Civic Hall
E	Georgian Hotel
F	Court House
G	

33,000 PEOPLE:

Natural Valley Gives Athens Sanford Field

campus of the University of Georgia is divided into two sections by a valley-like depression which provides a bowl for Sanford Stadium.

Sanford Stadium was dedicated in 1929 and is a large oval, concrete structure, located in the natural ravine, located in the heart of the campus. The stadium has a seating capacity of 33,000.

The stadium broke a precedent by being the first to play against the Bulldogs for the dedication of the stadium. The Bulldogs won 15-0.

The area of the University is divided into North Campus and South Campus. North Campus is on foot by way of the Arch from Broad Street to the intersection with Lump-

kin, is the older area. South Campus, the section south of Sanford Stadium and Stegeman Hall is the newer section.

The University is divided into 11 schools, each of which is concerned with instruction in some special field of knowledge.

It includes Franklin College, the School of Law, the School of Pharmacy, the College of Agriculture, the Peabody School of Forestry — the oldest in the South — the Peabody College of Education, the College of Business Administration, the Henry W. Grady School of Journalism, the School of Home Economics, the School of Veterinary Medicine and the Graduate School.

GOVERNMENT BY STUDENT COUNCIL:

105 Organizations Run The Activities

Student activities on the Georgia campus revolve about 105 organizations, honoraries and publications.

The University maintains one of the largest intramural sports programs in the south, as well as numerous smaller clubs ranging from agricultural economics to zoology. Literary societies, glee clubs, orchestras and dramatic activities add cultural aspects to student life.

Three publications, The Pandora, The Red and Black and The Georgia Agriculturist, represent 150 years of publication.

Campus social life is centered in the Student Union, located in Memorial Hall. Included in its facilities are a game room, lounge and ballroom and equipment for billiards, table tennis and shuffleboard.

The government for the entire student body is controlled through the student council. Representatives from all major organizations on campus set the policy for campus life. Several faculty committees advise the council concerning student welfare, according to official University of Georgia publications.

Campus rules state that no student shall bring alcoholic beverages on the University campus, or into any dormitory,

fraternity house or sorority house. Any man accompanying a coed at the University is expected to conduct himself above reproach, and any woman expects the young man with her to assume responsibility for her safety.

The use of a car by a student in Athens is a privilege reserved for upperclassmen in good scholastic standing. Sign-out time for a coed is 11:15 p.m. Sunday through Thursday and 12:30 a.m. Saturday and Sunday mornings.

A well-rounded campus life, based on a campus code, good taste and individual responsibility, is maintained, according to University spokesmen. Although the opportunity for extensive extracurricular activities is provided, the University feels such activities are secondary to the emphasis necessary on scholastic work — a real desire for "knowledge and a realization of the responsibilities which accompany educated leadership."

DOUBLE CANNON

The Athens Manufacturing Company of cotton textiles is part of an old Confederate arms factory, and on the City Hall lawn you will find the only double barreled cannon in the world.

Some 225 Drive To UG Campus

Tar Heels descended upon Athens, Ga., last night minus their caravan train — but hundreds of them came anyway.

Athens, site of the University of Georgia, is also the site of the University of North Carolina-UG football game, to be held this afternoon in Sanford Stadium.

It's annual caravan game for the Tar Heels. This year, UNC administration agreed to grant a class-free Saturday for the game. Students were planning on a 300-passenger caravan train to Athens yesterday, but very few tickets were sold and the train trip was cancelled. An estimated 225 students, however, left yesterday for the game via private automobile.

UNC and the University of Georgia have a lot in common. University officials in Athens say students "have a tradition of independence and are, to a great extent, self-governed," as are those at Chapel Hill.

Georgia is a coeducational school, and has an enrollment of more than 6,000, as compared to UNC's 6,575.

'The Fairest Of The Southland ...'

Here's the University of Georgia's Alma Mater, which is expected to be sung at halftime today:

From the hills of Georgia's north-land
Beams thy noble brow,
And the sons of Georgia rising
Pledge with sacred vow.

'Neath the pine trees' stately shadow
Spread thy riches rare,
And thy sons, dear Alma Mater
Will thy treasure share.

Through the ages, Alma Mater
Men will look to thee;
Thou the fairest of the Southland
Georgia's Varsity.

CHORUS
Alma Mater; thee we'll honor
True and loyal be,
Ever crowned with praise and glory,
Georgia, hail to thee.



THREE OF THE MEN TAR HEELS MEET TODAY IN SANFORD STADIUM
... Captain Bobby Gerrard, Coach Wally Butts and Alternate Captain Don Shea ...

DRIVE CAR? HERE'RE A FEW HINTS

If you drove your car to Athens yesterday, there are some things you should know:

Since there are no stock laws in several Georgia counties, motorists should watch for cattle and livestock crossing the highways.

Keep a close eye on the gasoline gauge. Although filling stations are well-distributed, many close at dark. There is a state tax of six cents per gallon of gasoline.

Georgia highways are patrolled by State Police, along with county officials. There is a State Highway Patrol office in Athens. Speed limit on Georgia highways is 60 mph during daylight, 50 at night.

Motorists may not pass streetcars on the left, may not pass a vehicle without sounding the horn and may not pass a streetcar or school bus while passengers are getting on or off.

UNIVERSITY CHAPEL

The University Chapel, built in 1832, has many legends clinging to it. The Sun Dial stands on the spot where the "Toombs Oak" grew. In the Chapel is a painting of St. Peter's Cathedral in Rome, one of the largest mounted oil paintings in America.

STARTED ON 40,000 ACRES:

Old South And Modern Architecture In Athens

A glimpse at the "Old South" and a glance into the future may be viewed on the campus of the University of Georgia.

Athens as an educational center was potentially conceived in 1783 by Gov. Lyman Hall in his

IN ADDITION TO UNIVERSITY:

Athens Maintains Its Own Industrial Life

All college towns don't go "college town."

Athens, noted as a city of distinguished ante-bellum houses and the home of the University of Georgia, was at one time like any other college town — similar to Chapel Hill or Charlottesville, Va., completely dependent upon its education center.

Early settlers, however, utilized the fact that Athens was located on a hill, partly embraced by the Oconee River, and were prompt to make use of the available water power.

As early as 1830 its textile industry had begun along with a variety of others designed to fill regional needs.

Today it is not only a center of learning and culture but also one of distribution, manufacturing, processing, marketing and trade. Athens now boasts over 100 manufacturing and processing plants with textiles, hosiery and processed poultry.

Cotton is converted into yarns, sheeting, flannel, upholstery, rugs and other products.

Clark County (where Athens is located) produces cotton, corn, potatoes, small grains, poultry,

garden truck, livestock and dairy products.

After the war, the population of Athens increased greatly, due to refugees who remained in the town. This led to the incorporation of Athens as a city in 1872. It is now the seat of Clark County.

Riding Taxi? It'll Cost You 20 Cents

Better bone up on a few basics — not for that Monday quiz, but on Athens, where the Tar Heels meet the Bulldogs this afternoon.

Athens traffic regulations include right, left and U turns at all intersections except where traffic lights indicate otherwise. Right turns may be made on red lights, provided a full stop is made. The speed limit in the business district is 15 mph, and 30 mph in the residential area.

The football game will be held at Sanford Field Stadium, which is located on the North Campus of the University.

Taxi fares are 20 cents a passenger within the city limits with 10 cents additional charge for each large parcel or suitcase.

Athens Municipal Airport is located three miles east of Athens, just off the county highway to Winterville. It is served by Southern Airways with four flights daily. Transportation from and to the city is by taxi. The fare is \$1 per passenger.

There are five hotels and tourist homes in Athens, along with three motels.

Motion picture houses include four white and one Negro. There are two drive-in movies.

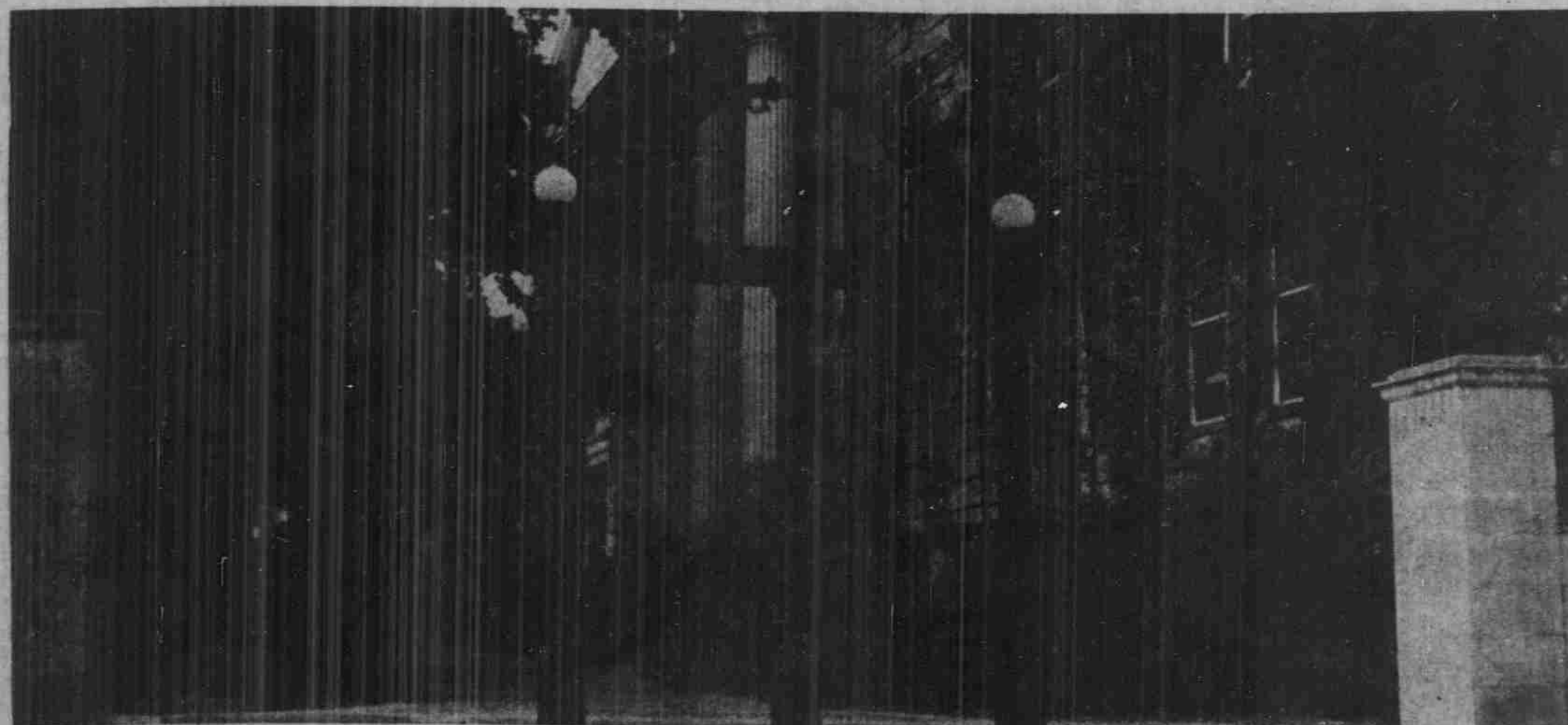
Athens receives three television channels from Atlanta. The two radio stations are WGAU (1340 kc) and WRXC (960kc).

Additional information may be obtained at the Athens Chamber of Commerce, Civic Hall, on Washington Street.

Want To Look Up Your Greek Letter Friends?

For Tar Heels who desire a chat with fraternity brother or sorority sister in Athens, here's a list of University of Georgia Greek letter societies:

Alpha Delta Pi, Alpha Gamma Delta, Chi Omega, Delta Delta, Delta, Kappa Delta, Alpha Tau Omega, Chi Phi, Chi Psi, Kappa Alpha, Kappa Sigma, Lambda Chi Alpha, Phi Delta Theta, Pi Kappa Alpha, Pi Kappa Phi, Sigma Alpha Epsilon, Sigma Chi, Sigma Nu, Tau Epsilon Phi and Theta Chi.



UNIVERSITY OF GEORGIA'S 'OLD WELL'—HER ARCH, AT THE ENTRANCE TO THE CAMPUS
...that's the administration building behind the Arch...