



POET E. E. CUMMINGS ARRIVES AT AIRPORT  
English Club speaker claims his baggage

## Cummings Arrives Tonight's Readings

CHARLIE SLOAN  
E. Cummings, who will read his poems and "nonlectures" tonight at Hill Hall, arrived here after appearing at college in Charlotte. Cummings, accompanied by his wife, arrived a day earlier than previously planned, said E. E. Cummings, president of the English Club. Cummings was also on hand to American poet and photographer. Later she showed great skill at diplomatically spoiling the possibilities of a good photograph. Known for his adamant individualism and powerfully written, grammar-smashing verse, Cummings was little different from any other air traveler. He talked of the weather and his fellow passengers as though he were arriving for a pleasant visit, unhindered by public awe and admiration. Both Mr. and Mrs. Cummings were very pleasant, belying the explicit instructions sent Moose by the poet's agent covering such things as autographs, pictures and even the desk and lighting the night of his performance. The stipulation of no autographs came after Cummings was mobbed by students of a midwest college. Moose said instructions suggested that faculty members protect him in a manner reminiscent of football's old flying wedge if no other escape route is available.

### FILM COMMITTEE

The GMAB Film Committee will meet today at 4 p.m. in Woodhouse Conference Room. All members and other interested persons have been requested to be present.

### SAYS SERVICE'S REPORT:

## Graduates Receive More Job Offers Through Placement

UNC graduates received and accepted more offers of jobs during the past year, ending Sept., 1955, than they did the previous year, according to Joe M. Galloway, director of placement.

In an annual report just released, Galloway said there have been increases in number of companies interviewing on campus, number of jobs reported by letter and telephone, number of students placed and higher starting salaries. He said 178 different organizations visited the campus last year in search of students who were looking for employment.

The fields where the employer's requests numbered 20 or more are as follows: Sales, 223; accounting, 178; general business, 158; chemistry 79; production, 58; personnel, 55; retailing 31; banking and finance, 28, and social work, 23.

### PLACEMENT SERVICE

A total of 460 students found jobs through the UNC Placement Service this past year as compared to 412 the previous year. Over half of the students who registered with the Placement Service found jobs through that agency. The remainder of the graduates either had employment before finishing school, were not seeking employment or continued in graduate work.

Galloway's annual report also shows that almost twice as many draft-eligible men were employed this past year as were in the previous year. Sixty-three non veterans, most of them single, none knowingly 4-F, have been employed.

Of those students who have been placed through the Placement Service during the past year, 68 percent of the North Carolina resi-

dent students accepted jobs in North Carolina. This was a drop from the 78 percent who remained in their home state last year. On the other hand, North Carolina kept 25 percent of the out-of-state students this year as compared with only nine percent last year.

### SALARIES

The average beginning monthly salary for students holding bachelor's degrees was \$298 for men and \$233 for women. The average for those with master's degrees was \$353 for men and \$286 for women. The students who received a Ph.D. degree went to work for an average of \$483.

The fact that many of the native North Carolina students are leaving the state after graduation is often deplored; however, this situation is not as bad as statistics may show, said Galloway's report.

### REASONS

There are varied reasons for this exodus, he said. The fields in which a large proportion of these students go out-of-state are college teaching, insurance, production, sales and science. It is generally considered best for a professor to get his start in a college other than the one he attended; home office insurance jobs are not numerous in North Carolina, many of these men return home after a training period; the employees in production and sales often return here after a training period.

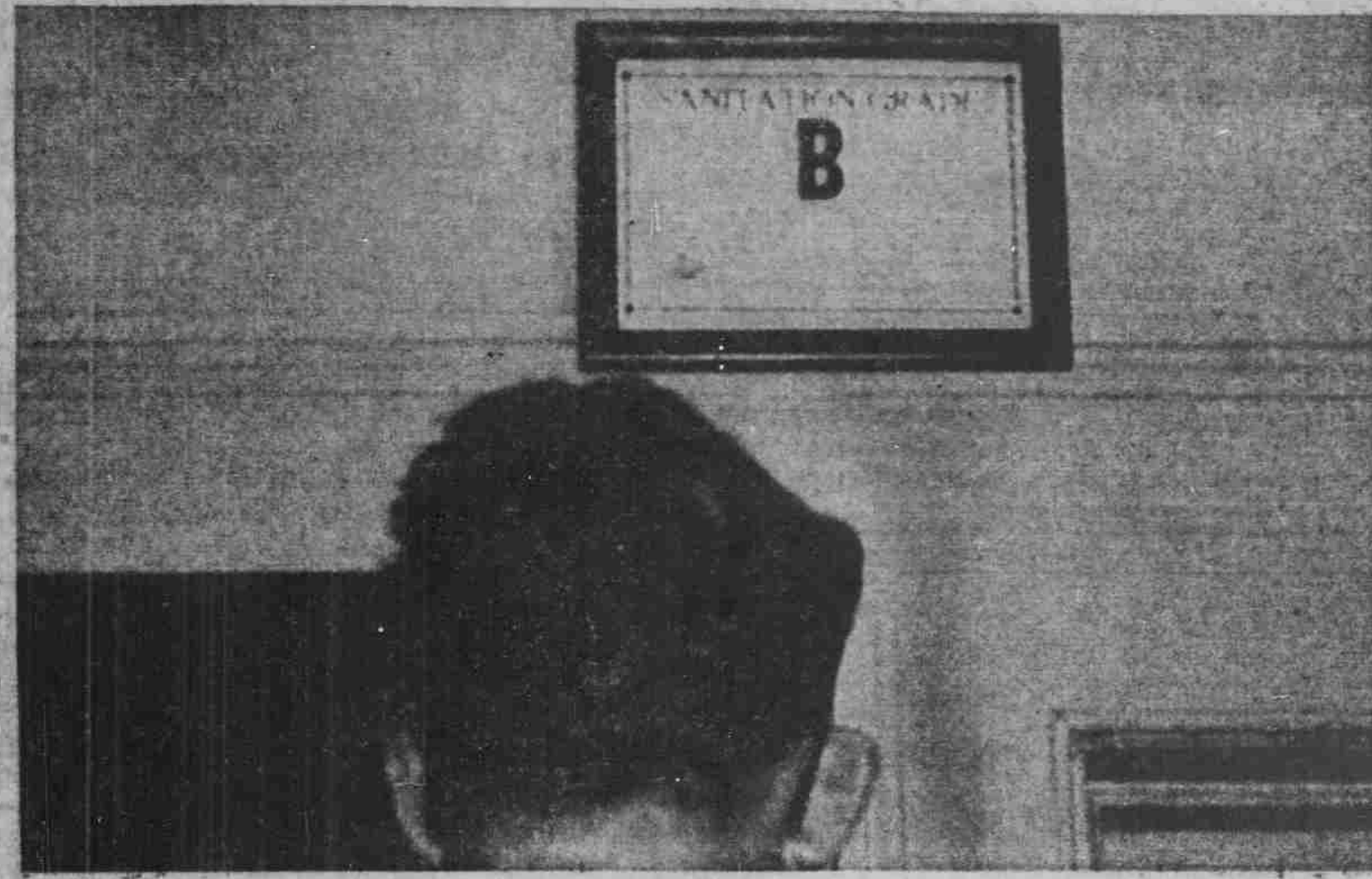
## Rod & Gun Field Day Set By Gym And GM

A Rod and Gun Field Day will be sponsored by the Graham Memorial Activities Board Outings Committee and Woolen Gymnasium on Nov. 17, according to Clyde Burleson, Outings Committee chairman.

The event will take place at 3 p.m. in the Durham Wildlife Area, Coach Walter Rabb, who secured the area for the event, termed it as "nearly perfect" for the event. This is one of the first events to be sponsored by GMAB and a University department.

There will be four events during the afternoon, said Burleson. These will be target-archery, bait casting, trap shooting and rifle marksmanship. A trophy will be awarded for the best in each event.

Although the exact details as to how entries will be handled have not been worked out yet, Burleson said there will probably be team as well as individual competition, with each member of the team participating in a separate event. Burleson said everyone is welcome to the event.



THE 'A' RATING IS GONE: IN ITS PLACE, A 'B' ... inspectors cite garbage, roaches, cleaning, personnel

Henley Photo.

### ALL STRAIGHTENED OUT NOW—PRILLAMAN

## Lenoir Hall's 'A' Rating Cut To 'B' By Health Men

By BILL CORPENING

Lenoir Hall's health rating has been dropped from an A to a B, but Manager G. W. Prillaman says the main reason is probably inexperienced dishwashers.

"We were straightened out a few hours after the inspectors left," he said.

The new rating was given to the University-run cafeteria after an inspection last week by Jessie Cannaday, district sanitarian for the State Board of Health, and H. Dobson Jr., health inspector for Orange County.

According to Dr. O. David Garvin, district health officer,

Lenoir Hall has maintained an A rating for many years. Dr. Garvin recalled one instance when the cafeteria was temporarily closed to undergo a general clean-up. A survey taken last spring showed that every eating establishment in Chapel Hill except two held A ratings. The two were the Cafe Mouza, which held a B rating, and the Vot Grill, which maintained a C rating.

Dr. Garvin listed the following as the basic reasons for the fall in Lenoir Hall's rating:

- (1) Problems in garbage disposal;
- (2) Presence of roaches;
- (3) Faulty cleaning; (4) Absences

in key personnel, and (5) Changes in maintenance employees.

Dr. Garvin pointed out that the drop in rating is "not a black eye on Lenoir Hall." He said "basically" the sanitation at Lenoir Hall is "good." He laid the cause of the fall to be due to an inspection at "an unfortunate time" and to an "accumulation of incidents."

"I feel certain that all corrections have already been made," he remarked.

Prillaman said that, in reaction to the new rating, he was "surprised." Prillaman said he considered the main reason for the fall to be due to "the loss of 10 points on account of dishes not thoroughly cleaned, which was due to new and inexperienced dishwashers."

Prillaman maintained that Lenoir Hall's health rating was now A, if not officially. He said "we were simply caught with inexperienced dishwashers. We were straightened out within two hours after the inspectors left." Prillaman added that "a perfect rating is hard to get."

## Candidates Advised On Regulations

Harry Braxton, member of the Elections Board, read excerpts from the general election law to some 90 candidates for office in the November 15 election. The reading took place at a compulsory meeting for all candidates in Gerard Hall last night.

Bob McLean, chairman of the Elections Board, directed the meeting and introduced Braxton.

Braxton, in quoting the election law, said that all candidates with the exception of Student Council candidates, who may use \$15 for campaign purposes, must operate on a budget of \$12.50. Expense forms were distributed, and accurate campaign expenditure reports must be turned in to the Student Government office in Graham Memorial by no later than 6 p.m. Monday.

McLean told the group that defacing or tearing down of campaign posters by any persons other than the candidate himself is a Honor Code offense, as is the falsification in any way of the financial reports.

Braxton said that the rule of no campaign material within fifty feet of all polling places would be strictly enforced. He added that any persons helping a candidate financially without the candidates knowledge may be tried by the Honor Council. If such help is given with the candidates knowledge, the candidate may be subject to disqualification, fine, or investigation by the Honor Council.

All candidates who were not excused and were absent from the meeting must see McLean at the first opportunity or be dropped from candidacy, McLean added.

## WUNC-TV Pleases Commission

The N.C. Educational Radio and Television Commission today "expressed pleasure" at WUNC-TV's television standards and scotched rumors there is any plan to sell the state's educational television station or enter into any parttime arrangement with commercial companies.

The group headed by Irving Carlyle of Winston-Salem formally congratulated those in control of WUNC-TV for "its program of service to the State."

### 'I'LL RISE OR FALL WITH MY ROOMMATE'

## Student Party Adopts Platform; Harrington Threatens To Quit

By NEIL BASS

The Student Party announced its campaign platform at a meeting Monday night. Keynoted by the threatened resignation of Chairman Bob Harrington.

Chairman Harrington apparently became distrustful early in the session at some Advisory Board recommendations. He asserted that he was "sick and tired" of the board's telling the party what to do. It is "undemocratic," he said, for one small group to tell the party proper how to "conduct" anything.

His temper really broke loose, however, later in the session when his roommate, John Black, who was running for party treasurer, ran into some serious opposition from Chris Douthy. Harrington had previously appointed Black financial coordinator for the campaign, and said he "felt" that to unify matters, the party treasurer and campaign financial coordinator ought to be one and the same person.

### RESIGN

When numerous party members appeared to go against the chairman's wishes and throw their support to Douthy, Harrington left the presiding chair and told the party: "Party disunity has been carried to the extreme tonight ... If you'll refuse to elect John Black, I'll resign. This is a vote of confidence for my government. I'll rise or fall with my roommate."

When voting time came, Jerry Brooreau gave Larry McElroy two proxy votes, which evidently were for Black. Bill Wolfe challenged the "validity" of these ballots, and this led to another heated argument on voting eligibility.

Black got the treasurer's post by a narrow margin. But several party members seemed to be very disturbed by Harrington's "coercion."

"I have never seen an attempt to influence a vote like this," Tom Lambeth told the group. "I came up here tonight favoring Chris Douthy, but I was put in a position that forced me to vote for John Black," he said.

Miss Pat McBane, party secretary, and Miss Donna Ashcraft, party vice-president, attempted to address talks to the party at the meeting's end, but matters were so disunited and confused that adjournment was moved before matters became even more chaotic.

### PLATFORM

Before the session developed into a veritable row, the party decided on these items for platform planks:

- (1) The establishment of a contingency fund for the repair of TV sets and washing machines in the dorms, to be supported through allocation of profits from vending machines in the individual dormitories.
- (2) The placing of benches in front of dorms for students' use, pleasure and comfort.

(3) The pledging of close co-operation with and support of University officials in establishing a new fraternity court.

(4) The expansion of social facilities through a new student union building, and through extension of dormitory social funds and support of dorm social improvements.

(5) The improvement of parking facilities by construction of a new parking lot, to be located either on the south side of Emerson Field or on either side of the Bell Tower.

(6) The requisition that the University administration exhibit to students and townspeople such long range, overall plans for University expansion as they may have, so that these students and townspeople may offer suggestions.

(7) The establishment of greater transfer of credits for transferring students, particularly those coming from other branches on the Consolidated University.

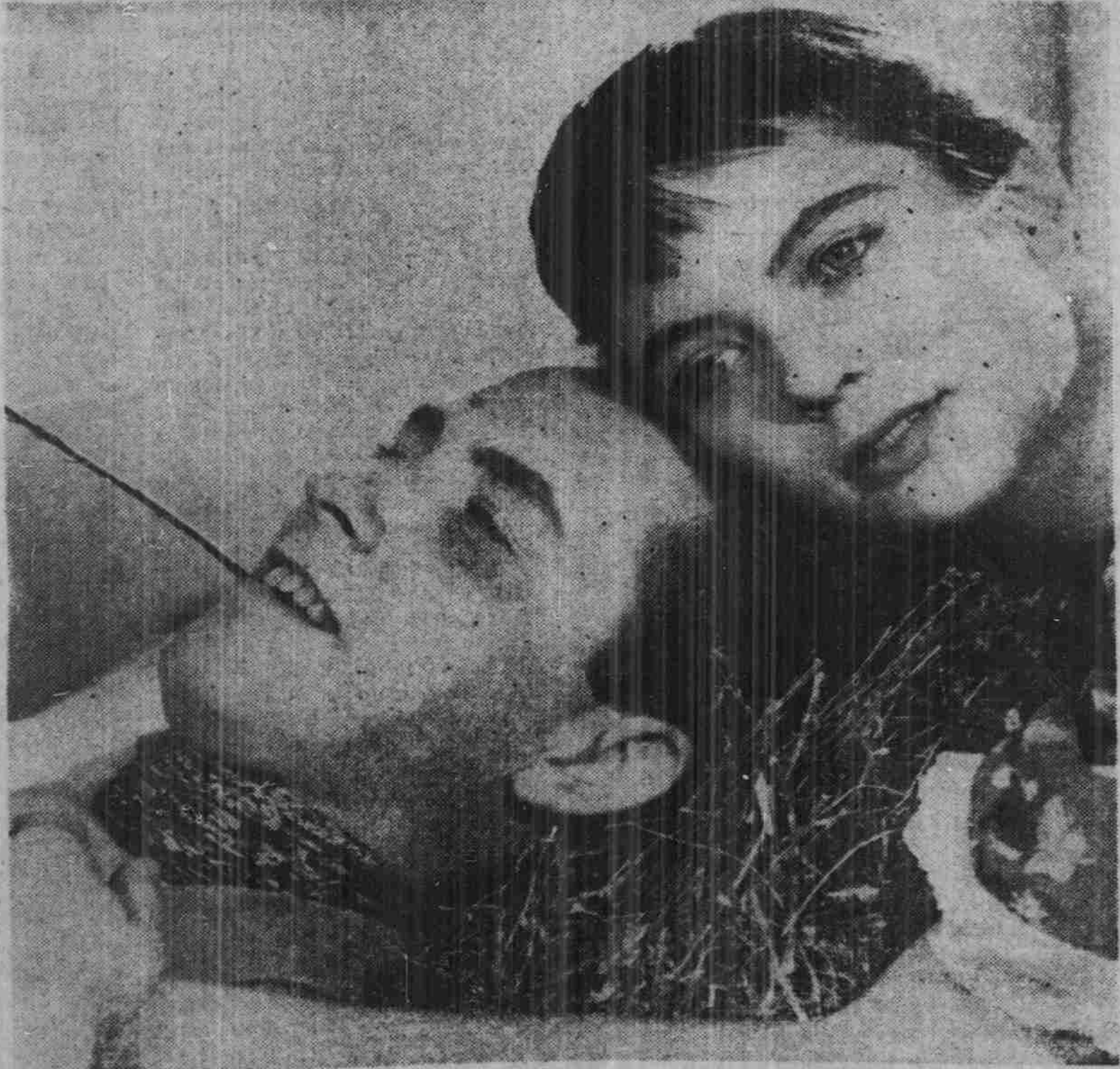
(8) The pledging of cooperation with the Veterans' Club through government aid and support, for greater effectiveness of the club's program.

(9) The activation and greater utilization of the student government committee which meets with the Visiting Committee of the Board of Trustees.

(10) The extension of whole-hearted support to Graham Memorial's program for extension of social facilities to Victory Village.

## ler To eak Here Friday

With all tickets for the Democrats Club banquet on night have been sold, YDC W.E. Graham yesterday an invitation to all Carole-ents to hear the after-noon of National Demo-try Chairman Paul Butler. said the doors of the hall room will be opened 7 and 7:30 p.m. after the as been served, and "as ace as possible will be able to politically conrolina students" to hear ul Butler and Represent-Durham.



Playmakers' Touring Play Opens Here Tonight

"When you said you were pretty, it was true." That's what Starbuck, played by James Heldman, tells Lizzie, played by Miss Louise Fletcher, in N. Richard Nash's comedy, "The Rainmaker," which opens here tonight.