

The Daily Tar Heel

POLITICS

The politicians view the paper, and the editors view the politicians. See page 2 editorial.

WEATHER

Fair and mild today, expected high of 60.

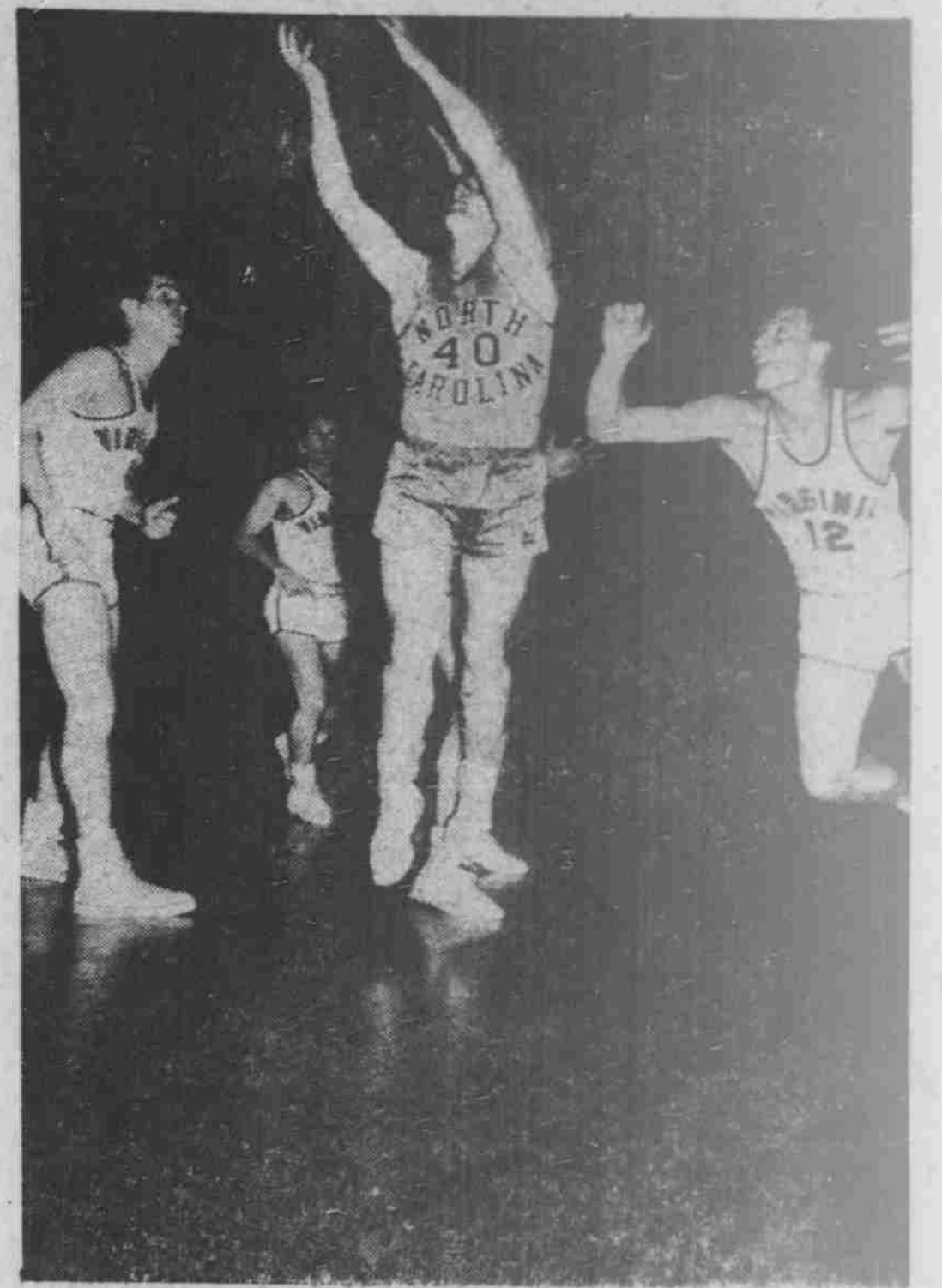
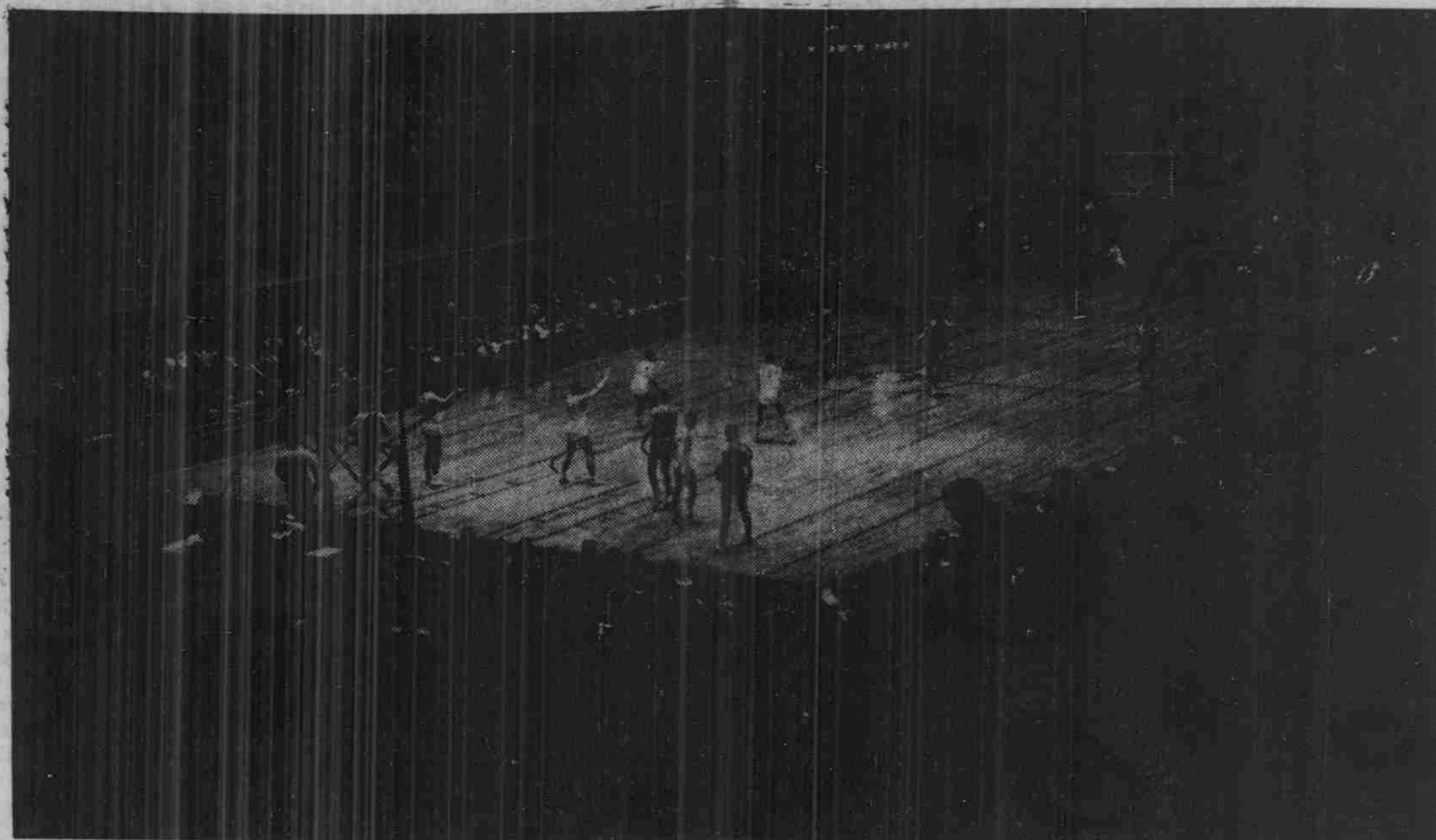
NO. 112

Complete (F) Wire Service

CHAPEL HILL, NORTH CAROLINA, SUNDAY, MARCH 4, 1956

Offices in Graham Memorial

FOUR PAGES THIS ISSUE



Here's Where The Action Went On Last Week

Above is William Neal Reynolds Coliseum in Raleigh, scene of the ACC Tournament held last week. At left, UNC's Joe Quigg taps one in for two points as Tar Heel Pete Brennan (35) backs him up. At right, Carolina guard Tommy Kearns pulls down a rebound

from an unidentified Virginia player. Wister Nelligan (12) of Virginia can do no help as teammate Bob McCarty watches near by. Daily Tar Heel Photographer Boyden Henley made these photos during the tournament last week:

ACC IN BRIEF

Yesterday's Games
State 76
Wake Forest 64

Legislature Book Hours Next Week

By NEIL BASS
Legislators debated and mulled Thursday night's measures for two hours.

As yet, by far, the longest since the advent of the assembly.

Which really caught the eye was the new law. Specifically it was for reducing the number of ballot boxes which are heated controversy.

Item, Student Party representatives fought till the very end to retain the polling places in the dormitories, but the Party majority swept through by a sub-

stantly "clarifying" a measure during the 19th assembly created a bipartisan board of editor candidates. Daily Tar Heel was appointed unanimously.

Changes were instituted originally by this measure. Primarily it reinforced LEGISLATURE, page 4)

GM'S SLATE
Activities scheduled for Graham Memorial today include:
11-12:30 a.m., Grail
Christian Science, 6:30-7:30 a.m., Grail Room; Presbyterian, 9:30-11 a.m., Roland; 12 and 3 and APO Room; 11 a.m.-12:13 p.m., Roland; Newman Club, 6:45-8:15 p.m., Roland Parker 1; Student Conference Room; Episcopal, 10-12 p.m., Rendezvous.

Activities scheduled for tomorrow include:
1-1:30 p.m., Grail; 2-4 p.m., GMAE, 4-5 p.m., Grail Student Party, 7:30-11 p.m., Roland Parker 1, 2 and 3; 8:30-10 p.m., Board, 2-5 p.m., Roland; 3:30-5 p.m., Budget Committee; Woodhouse Conference; Dance Committee, 7-8 p.m., Woodhouse Conference; Bridge Club, 7-11 p.m., Newman; University Party, 8-10 p.m., Rendezvous Room; 10-11:30 p.m., APO Room.

Carolina Symposium — Starts Next Sunday:

Court Discussion To Start Meeting

One of the most controversial issues of our time—"The Supreme Court's Challenge to the South—A Progress Report"—will kick off the seventh Carolina Symposium on Public Affairs next Sunday.

Bringing together an array of speakers, this first symposium since before World War II will continue in a week-long program ending March 16.

The program will run the gamut of regional, national and international affairs.

The schedule for discussion and speeches is as follows:
SUNDAY, MARCH 11
Memorial Hall - 8 p.m. - "The

Supreme Court's Challenge to the South—A Progress Report." Speakers—Dr. Benjamin Mays, president of Morehouse College, Atlanta, Ga.; Colbert A. (Pete) McKnight, editor of The Charlotte Observer; and Major L. P. McLendon, Greensboro Attorney.

MONDAY, MARCH 12
Morning and afternoon classroom and assembly room discussion of segregation and public education. Memorial Hall - 8 p.m. - "The South's Progress Toward Industrialization — A Reappraisal." Speakers — Phillip G. Hammer, president of Hammer & Co., economist. (See SYMPOSIUM, page 4)

Carolina Chapter Of SDA Being Organized

By RUTH SINDELL

"Stronger leadership in student government" through the "election of better candidates" is the policy advocated by a new organization on campus, Students of Democratic Action, according to Jim Holmes, one of the organizers.

"I feel that here on campus SDA can perform a great service to students in helping better candidates to be elected; thus, providing stronger leadership in student government that students have had already," Holmes states.

The SDA is an affiliate of the Americans for Democratic Action, whose national headquarters are in Washington. SDA was recently introduced to the Carolina campus by Yale Bernstein, national field secretary. Ten charter members and a chapter constitution approved by ADA are necessary requirements for an SDA chapter.

SDA has no formal ties with any political organization. Members of both political parties on campus have participated in the first two meetings of this group.

Membership in SDA requires that the student believe in the liberal principals of political freedom. The aims of this organization are to see that the best candidates are put forward in campus, state and national campaigns, eliminate racial discrimination and protect the rights of college students in accordance with the liberal policy of ADA.

In connection with SDA's stand on student rights Holmes expresses the hope to "be able to further cooperation between student government, the faculty and administration so that students' rights will be preserved."

Other noted liberal leaders of the ADA, said Holmes, are Mrs.

SP Plans Big Show This Week

The Student Party will meet Monday and Tuesday night of this week in Roland Parker Lounges of Graham Memorial.

Monday night's meeting will be held at the regular 8 p.m. meeting time; the party will meet at 7:30 the following night.

Included on the agenda for Monday are nominations for senior class president, all dorm men's legislative districts and Town Men's IV district.

Tuesday the Student Party will nominate president, vice president, secretary and treasurer of the student body, and dorm women's legislative district.

Alpha Epsilon Delta Plans Open Meeting
Alpha Epsilon Delta honorary fraternity will hold an open meeting for all pre-medical and pre-dental students in Carroll Hall Tuesday night at 7:30.

The purpose of the meeting is to familiarize the students with some of the problems that will confront them in medical school. AED especially invited those students who are interested in joining its fraternity. This is the first of several meetings before new members are taken in.



Third from left is Miss Martha Richardson, the only nominee for president. Others are (left to right) Misses Jackie Aldridge, Polly Clarenbach and Kathryn LeGrand, nominees for vice-president.

ASKED MALE UNDERGRADUATES:

Psychology Students' Poll Slightly Favors Integration

The matter of segregation-integration is a widespread topic these days.

And mighty interesting, too.

Interesting enough that Jack Godley and Max Hagood, UNC students faced with the task of writing a term paper for a Psychology 125 class, decided to combine their talents and see what some male undergraduates here thought about various aspects of the question.

The two students generalized on the basis of their survey that "it would appear that integration is slightly favored."

Their report is condensed as follows:

"The May, 1954, decision of the United States Supreme Court, which—in effect—put an end to racial segregation in our system of public education, set in motion problems which will affect all of us.

NOTHING NEW

"Integration on the college level is nothing new. It has already been put into operation at the University of North Carolina, giving rise to much discussion among the students, both pro and con.

"Because we do believe that the question of integration is one in which all of us are involved or will be involved, we have attempted to discover in this study just what the opinion of the male undergraduate student at Carolina is on this subject.

"We have attempted to discover the facts and report them without trying to explain why they are as they are. We sought to conduct this survey as impartially as possible, without influencing the results or revealing our own personal opinions on the subject in any way.

PERTINENT

"The questions which we asked were those we believed to be most pertinent and which we felt would reveal the student body opinion best. We conducted the survey by having students fill out a mimeographed questionnaire consisting of four questions, with a fifth question for members of fraternities.

"We kept the questionnaire as short as possible for two reasons. One, we felt that the majority of the students polled would be more willing to participate in the



...a Negro undergraduate in UNC swimming class

INTEGRATION AT PHYSICAL EDUCATION

survey if the questionnaire were limited to a few relevant questions.

"Two, in order to assure that we would get the questionnaire back, we kept them short enough so that we could wait for them to be filled out and collected immediately. On the average, our questionnaire took about two minutes to complete.

"We surveyed a total of 487 men. This included 265 non-fraternity and 222 fraternity men. The last group was made up of members of social, honorary, business and service fraternities. Each subject was asked to supply the following information:

- "(1) His age.
 - "(2) His class (year in school).
 - "(3) Is he a veteran.
 - "(4) His home state.
 - "(5) If he is a church member.
- "By each question, the numbers one through five were listed. The subjects were requested to answer each question by circling the number best describing their feelings on that particular question. The number key was as follows:

- "(1) Very much in favor.
 - "(2) Approve.
 - "(3) Indifferent.
 - "(4) Oppose.
 - "(5) Very much in opposition.
- "It was previously stated that our aim in making this survey was merely to report the facts of student opinion regarding this question. However, we

would like to make one or two general observations.

"With the exception of question number two (and question number five in the fraternity group), most of the results hit around the mid-point, without extreme reactions at either end. There seemed to be about as much opposition as there was approval. A noticeable difference in the percentage of veterans voting number five (very much in opposition) was observed.

"If one could generalize on the attitude of those surveyed on the integration question alone (question number one), it would appear that integration is slightly favored. It further appears that the attitude tends to be more or less in those areas not affecting the individual to a great extent, while extreme opposition exists in those areas where the individual is greatly affected."

IN THE INFIRMARY

Students in the Infirmary yesterday included:
Miss Jane K. Fink, Miss Glenna L. Dearing, Wesley S. Brewer, George H. Hamilton, David B. Atkinson, Charles F. Surratt, Rea Hinson, James D. Bayliff, Richard C. Spivey and William B. Akin Jr.