

Supreme Court Outlaws Segregation In Public Transportation

The Daily Tar Heel

EIGHT
That's how many days the students have to solve the automobile problem. See editorial, page 2.

FOUR PAGES THIS ISSUE

WEATHER
and cool, with expected high

VII NO. 144

Complete (UP) Wire Service

CHAPEL HILL, NORTH CAROLINA, TUESDAY, APRIL 24, 1956

Offices in Graham Memorial

Memorial Hospital To Be Placed Under UNC Med School

in the organizational affairs of the Division of Health Affairs of the University announced yesterday by Robert B. House, with Friday and the unanimous approval of the Board of Trustees. The action taken is subject of the Board of Trustees.

School of Medicine, School of Pharmacy, School of Public Health, School of Dentistry and School of Nursing. The director of the hospital will be a department head in the School of Medicine. The change is scheduled to become effective between July 1, 1956 and July 1, 1957. Director of the Division of Health Affairs is Dr. Henry T. Clark Jr. Dr. W. Reece Berryhill is dean of the School of Medicine, and Dr. Robert R. Cadmus is director of the hospital. Chiefs of the other schools are Dr. E. A. Brecht, dean of the School of Pharmacy; Dr. E. G. McGavran, dean of the School of Public Health; Dr. John C. Brauer, dean of the School of Dentistry, and Miss Elizabeth L. Kemble, dean of the School of Nursing.

Glee Club And Chorus To Give Concert Tonight

The UNC Men's Glee Club and Chorus, conducted by Joel Carter, will present a concert in Hill Hall today at 8 p.m. The first half of the program will be devoted to selections sung by the Glee Club with Hunter Tillman of Roxboro accompanying. After intermission, the mixed chorus will sing a group of Jewish and Israeli songs, and conclude with Randall Thompson's "The Peaceable Kingdom." Miss Shirley Carpenter of Oakboro will accompany.

Soloists with the Men's Glee Club are Richard Peterson, tenor from Asheville; David Small, baritone, Morehead City; Hugh Mason, bass, Fayetteville; and Mrs. Donna Patton, soprano, Missoula, Mont. Miss Roberta Dixon, mezzo-soprano from Raleigh, will be soloist with the Mixed Chorus in one of the Jewish songs.

"The Peaceable Kingdom" is a sequence of sacred choruses for unaccompanied mixed voices with text based on the Prophecy of Isaiah. The title was inspired by Edward Hick's painting. Commissioned by the League of Composers for the Harvard Glee Club and the Radcliff Choral Society, the work was published in 1936.

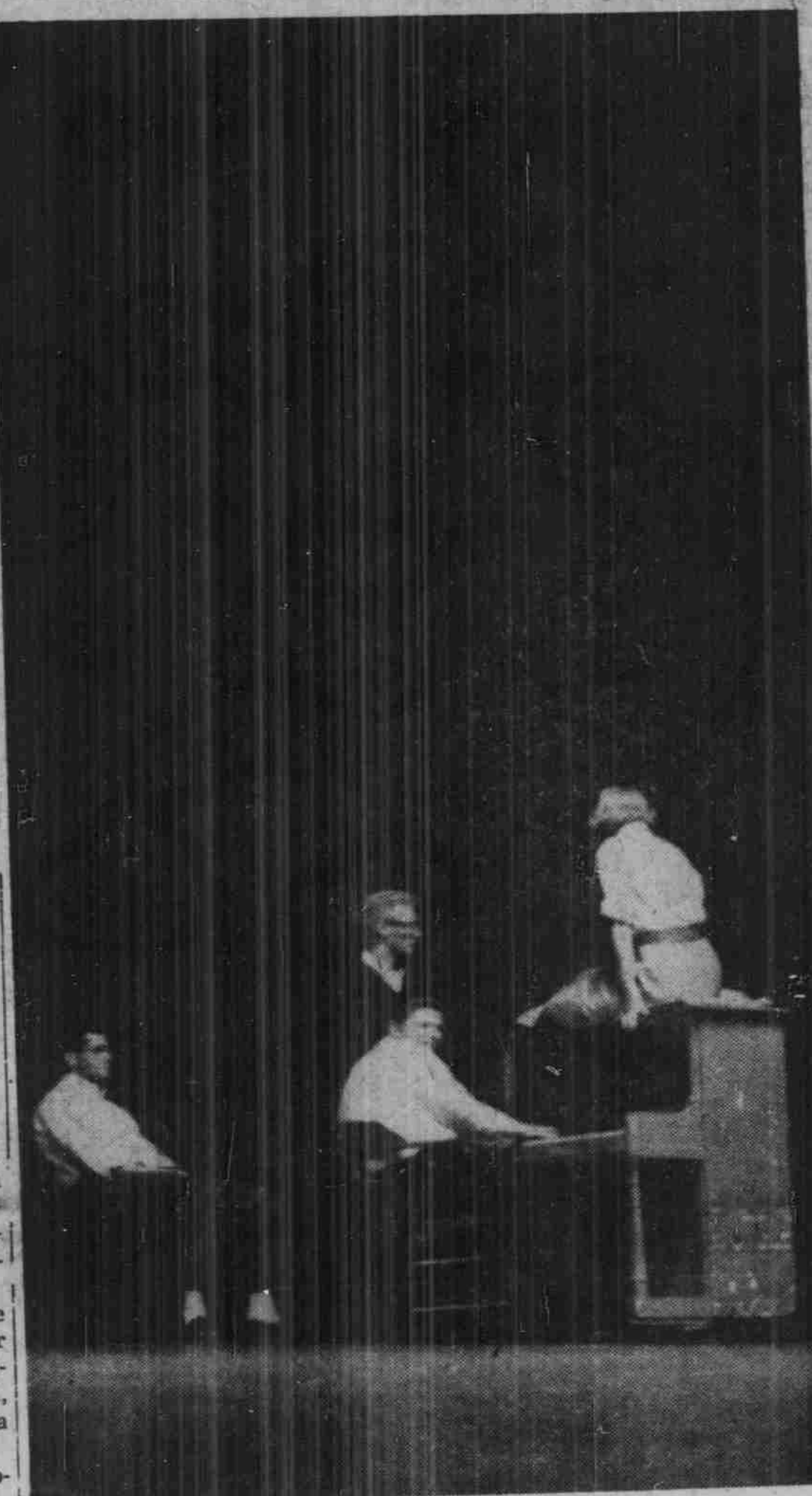
Order Of Grail Holds Banquet; Fifty Attend

"Free to Face the Future" was the topic spoken on by Howard Holderness, president of the Jefferson Standard Life Insurance Co., at a banquet here Thursday night. The banquet was given by the Order of the Holy Grail, campus honorary society. Approximately 50 people attended the event, including both past and present members of the organization.

Holderness, Grail member in 1922-23, graduated from the University with a Bachelor of Science degree in Mathematics in 1923. He attended the Harvard Business School for two years in 1923-25. Holderness worked his way up from the bottom with Jefferson Standard, serving as secretary and vice-president before becoming president in 1950.

Delegata Ed McCurry, of Shelby, welcomed both present and past members to the banquet and Scribe Luther Hodges Jr., of Leaksville, gave a resume of the group's activities throughout the year. Eleven new members, recently initiated by the Order were presented membership certificates during the meeting.

Former members present at the banquet, held in the Carolina Inn, included Mayor E. J. Evans of Durham, W. Brantley Womble of Raleigh, Dean of Student Affairs Fred H. Weaver, and Assistant Dean of Student Affairs Ray Jefferies. The Grail was founded in 1920 to build better relations between fraternity and non-fraternity men.



Jack Markham, Dave Parington, Cecil Hartsoe & Nancy Stephens working hard to get Sound & Fury ready

Monday's 'Chile Hot' To Star 'Pee Wee' Batten

Sound and Fury will display its new production entitled "Chile Hot" next Monday, Tuesday and Wednesday, and among the stars is a potentially professional performer named Miss Mary Cecilia Batten, alias "Pee Wee." Miss Batten is a celebrity in her own right. In 1953, she was one of three performers from North Carolina (she comes from Mt. Gilead) who attended and performed in "Radio and TV Queens of the South," a yearly event held in Miami and sponsored by radio and television stations all over the South.

UP Will Elect New Officers Tonight In GM

University Party members will meet for the first time since spring elections tonight at 7:30 in Roland Parker Lounges 1 and 2 of Graham Memorial. The purpose of the meeting, according to Party Chairman Bill Sabiston, is to elect party officers for the coming year, which includes chairman, vice-chairman, secretary, and treasurer. It is expected that, among others, Jim Exum and John Kerr will be present to comment on the past campus election. Exum is past UP floor leader in the student legislature, and Kerr is the newly-elected treasurer of the student body. Sabiston said yesterday, "I sincerely hope all of our members will be able to attend this very important meeting. Next year the UP is anticipating an even bigger and better year, which can only be accomplished if we elect capable party leaders."

16 Students, One Professor Make Highest UNC Honorary

By CHARLIE JOHNSON

Ban Based On Old School Decision

WASHINGTON (AP) — The Supreme Court yesterday unanimously outlawed segregation of passengers on all public buses — in effect meaning on all public transportation. The action was taken in a brief order on a case arising in Columbia, S. C. This upheld a lower court decision that the same principles on which the Supreme Court banned race segregation in the public schools applied also to public transportation. For the South, where segregation is imbedded in state laws, it has significance only a little short of the school ruling.

Hubert Pierce, manager of the Chapel Hill Union Bus Terminal, said yesterday he would await instructions from his superiors before doing anything about the Supreme Court's decision going away with segregation of passengers in public buses. He said the terminal was used by the Carolina Coach Co., which has main offices in Raleigh, and the Queen City Coach Co., which operates out of Charlotte.

Montgomery, Ala., for instance, has experienced prolonged turmoil over the segregation-on-transportation question, involving a boycott

of the bus lines by Negroes. In yesterday's action, the Supreme Court by inference branded as frivolous South Carolina's appeal to it to uphold segregation in transportation. Its unsigned order cited a case titled Slaker v. O'Connor. In that case, the high court threw out an appeal and said it had been taken "without any authority of law" and "thereby needlessly consumed our time." The court action yesterday affirmed a ruling by the U. S. Court of Appeals in Richmond holding that segregation on intrastate buses (that is, buses operated entirely within one state, as are city buses) violates the federal Constitution. The appellate court decision, handed down last July 14, said the Supreme Court decision laying down the "separate but equal" doctrine in transportation "can no longer be regarded as a correct statement of law."

The full text of the brief order dismissing an appeal by the South Carolina Electric & Gas Co. merely said: "Per curiam by the court: the appeal is dismissed. Slaker v. O'Connor 278 U. S. 188." South Electric & Gas had appealed from the ruling of the court of appeals. Sixteen students and one faculty member were tapped into the Order of the Golden Fleece in impressive ceremonies held in Memorial Hall last night. The 54th annual tapping ceremonies of the highest honorary on campus preceded the annual Valkyrie Sing. The lone faculty member taken in was Dr. Preston H. Epps, longtime UNC professor of Classics. The new student members are: Norwood Bryan Jr., senior of Fayetteville; Guyte M. Cotton, senior of Clinton; Henry H. Dearman, senior of Statesville; Jim Exum, junior of Snow Hill; Ramathanan Gnanadesikan, graduate student of Madras, India; William E. Graham Jr., 1w student of Jackson Springs; Charles J. Katzenstein, senior of New York, N. Y.; Louis Kraaz, senior of Charlotte; Tom Lambeth, junior of Winston-Salem; Ray Long, senior of Marion; Fred A. Powledge, junior of Raleigh; Jim Turner, senior of Winston-Salem; Jerry Vayda, senior of Bayonne, New Jersey; Burt Veazey, senior of Raleigh; Sam Wells Jr., junior of Reidsville, and Bob Young, senior of Asheville.

Officers for 1955-56 were Thomas C. Creasy, Jason; Manning Muntzing, Hyparchos; Bev Webb, Grammateus; and Charlie Yarbrough Jr., Chrystopher. Don C. Shoemaker, former editor of the Asheville Citizen and now executive director of the Southern Educational Reporting Service, spoke at the tapping banquet, held after the tapping ceremonies. Shoemaker became a Fleeceman in 1933 as a UNC undergraduate. The Golden Fleece selects men from the junior class or above for their "highest qualifications in character, ability, achievement and leadership." The Order, second oldest college organization of its type, was founded here in 1903. Fifteen students were tapped in last year's ceremonies. Since the Order's inception, 506 men have been singled from among their classmates for tapping. Distinguished Fleece members in national and University life include William C. Friday, acting president; Robert B. House, chancellor of the university; former presidents Frank P. Graham and Gordon Gray—all of whom were tapped into the Order as undergraduates. In state service, members include Governor Luther B. Hodges, the late Governor William B. Umstead, and Associate Justice William H. Bobbitt of the North Carolina Supreme Court.

Nurses, Mangum, St. A., Tri Delts Win Sing

By NEIL BASS
St. Anthony Hall, Delta Delta Delta, Nurses Dormitory, Mangum Dormitory and Baptist Student Union awlck off with honors in the Valkyrie Sing last night. St. Anthony Hall edged out Chi Psi to win top honors in the fratern-

ity division. The St. A.'s presented "Uncle Tony's Thirsty Thirteen." The Tri Delts presented an elaborate production entitled "Once in a Pink Moon" to take top spot from the KD's in the sorority division. The KD's skit, "And the Rains Came," received the longest ovation for several minutes after their presentation was over. The Nurses' Dorm skit — "It Comes With Spring"—won a lengthy ovation also. Smith Dormitory's

88 Coed Counselors Named For Next Fall

Eighty-eight counselors for next fall's women's orientation have been selected. Women's Orientation Chairman Annette Niven announced recently.

Adviser training will begin Thursday, April 26, with a meeting in 106 Hanes. Named dormitory chairmen were Misses Barbara Moore, McIver, Jewel Buffalo, Carr; Tish Harter, Smith; Lee Ann Curtis, Alderman; Jean Peay, Spencer; and Nancy Turner, Nurse's Dorm.

The new advisers are: Misses Donna Lou Anderson, Sheila Angstradt, Penn Anthony, Ester Balleintine, Carter Baxley, Harriet Bobbitt, Mary Llew Bowers, Ellen Brauer, Joy Brown, Beth Buie, Mary Burgwyn, Elaine Burns.

Anne Byerly, Bess Chandler, Carter Chapin, Polly Clarenbach, Carolyn Corley, Sarah Crawford, Erma Dance, Faye Dark, Jerry Dixon, Betsy French, Peggy Funk, Lois Anne Gallagher, Mary Laurin Gravelly, Carolyn Hackney.

Margaret Hafer, Adele Hagood, Margot Hammond, Virginia Haisell, Beverly Heaton, Gwen Hoising, Marian Hobeck, Caroline Hume, Maria Hunter, Ann Jennings, Dorothy Johnson, Carol Jones, Nancy Lattimore, Carol Liner, Betty Jane Maddison, Winifred Martin, and Sylvia McArthur.

Estelle McCure, Maria McCord, Nancy McFadden, Patricia McQueen, Anne Ford Melton, Barbara Faye Miles, Mary Ruth Mitchell,

Young Selects Group To Make Traffic Study

Student Body President Bob Young yesterday announced appointment of a special Traffic Advisory Commission to study and report on the current campus traffic situation. Former Student Party Chairman Norwood Bryan will serve as commission chairman. Young announced.

University trustees recently placed the problem of campus traffic conditions in the hands of student government officials. They requested that a solution to the problem be made available to them on May 1. President Young said yesterday the special commission will have a report by Thursday of this week.

Public hearings will be held today from 4 to 5:30 p.m. in Roland Parker 3 of Graham Memorial by the special Traffic Advisory Commission. Chairman Norwood Bryan requested yesterday that all interested persons wishing to appear before the commission do so at that time.

Other members of the committee are Darwin Bell, a Victory Village resident and a married veteran, Miss Martha Barber, UP Chairman of the Student Legislature's Rules Committee; Stanley Shaw, NSA Coordinator; and Charles Canfield, a freshman. Bell is a member of the Student Party, Shaw of the University Party and Canfield is an independent in campus politics.

Keith Palmer Named German Club Prexy
Members of the Germans Club held an election of officers at a meeting last Tuesday night at the SAE house. Newly-elected officers are: President Keith Palmer, Kappa Sigma; Vice-president George Ragsdale, DKE; Secretary Mark Cherry, Phi Delta Theta; Treasurer Gordon Brown, Beta Theta Pi.



DONALD J. MILLER
national student officer

Student Named Officer In Pharmacy Association
Donald J. Miller junior of Raleigh, was elected chairman of the Student Branches of the American Pharmaceutical Assn. at the national convention in Detroit recently. Last year Miller was vice-chairman at the Convention in Miami. He will preside at the convention in New York in 1957.

Phi Eta Sigma
Newly initiated members of Phi Eta Sigma can obtain their membership certificates in 312 South Building, according to Dean Mackie.