

# Covering The University Campus

## CAROLINA CHRISTIAN FELLOWSHIP

The Carolina Christian Fellowship (IVCF) will meet for its Thursday evening Bible study tonight at 7 o'clock in the Choral Rehearsal Room of Hill Hall. The program topic will be "Personal Devotion." All students have been invited to attend.

## GRAD CLUB DANCE

The Grad Club will hold a dance Friday night at Kenan Dorm. Music for the dance will be provided by the Norman Coggins Band from 8:30 until 11:30. Admission will be free.

Grad students, their friends, and all faculty members have been invited to attend the festivities.

## ALPHA GAM SALE

The Alpha Gamma Delta sorority will have a food sale at Town and Campus Friday beginning at 9 a.m. Profits from the sale will go to the Cerebral Palsy hospital in Durham.

## FRENCH FILMS

The French Department will sponsor two French films this week. The films will be shown free in 215 Murphy Hall Friday at 3:30 p. m.

## FOREIGN FILMS

The Foreign Films Series will present "An Evening of Experimental Films" tonight at 7:30 in Carroll Hall Auditorium.

## GRAD COUNSELOR

Saturday is the deadline to apply for orientation counselor in the graduate division.

Interested persons may get application blanks at the YMCA. The committee wants members from various departments.

Counselors are expected to return to Carolina on the morning of September 17 for two days of orientation program. One spring meeting will be held to organize the activities.

## GMAB APPLICATIONS

Application blanks for GMAB committee chairmen and membership are still available. Interested persons may pick them up at the information desk at Graham Memorial.

## SUMMER SCHOOL EDITOR

Applicants are being sought for the position of the Summer School Weekly editor for this summer. Any student may apply for this position, but someone with some newspaper writing experience would be preferred.

Interested persons should apply at 206 South Building by Saturday. A committee will review the applications and select the editor.

## WUNC PROGRAM SCHEDULE Thursday

- P.M.
- 6:00 Sunset Symphonies
  - 6:55 Evening News Summary
  - 7:00 Songs of France
  - 7:15 London Column
  - 7:30 Masterworks From France
  - 8:00 Sweden in Music
  - 8:30 French Story
  - 9:00 Concert Hall
  - 9:30 Ideas
  - 10:00 Evening News Summary
  - 10:15 Evening Masterwork
  - 11:30 Sign off

## WUNC TV SCHEDULE Thursday

- A.M.
- 8:45 Morning Music
  - 8:55 Morning News
  - 9:00 United States History
  - 9:30 General Science
  - 10:00 World History
  - 10:30 Mathematics
  - 11:00 Sign off
- P.M.
- 12:15 Doctors in Space
  - 12:45 12:45 News
  - 1:00 Today on the Farm
  - 1:30 Potpourri
  - 2:00 Sign off
  - 3:30 Art in Living
  - 6:00 Report From America
  - 6:30 6:30 Report
  - 7:00 American Government
  - 7:30 New Testament Literature

8:15 Improvement of Instruction  
9:00 Opera History  
9:30 Ideas  
10:00 Final Edition  
10:05 Tomorrow on Channel Four  
10:07 Sign off

## Netters Go After Duke For 5th Win

Arch-rival Duke furnishes the opposition for the Carolina tennis team this afternoon when the Tar Heel netters go after their fifth conference victory of the season at Durham.

The Tar Heel courtmen were supposed to have met Virginia Monday, but a driving rain that afternoon forced cancellation of the match. At this time no definite date has been set for its rescheduling.

Last year the Blue Devils compiled a 7-10 overall record and were fourth in the final ACC standings with a 3-3 mark. In their last outing coach Whit Cobb's squad edged by Virginia 5-4 to hand the Cavaliers their first conference defeat.

This year's Duke tennis team is led by senior Don Romhilt and sophomore Dick Katz. In addition to Romhilt and Katz, Cobb also has lettermen Jack Williams, Bruce Bottoms, and Claude Jack returning for another season.

Carolina coach Vladimir Cernik will probably send the same lineup against the Blue Devils that he has used most of this season to compile an undefeated 7-0 record. Seniors Bob Bortner, Steve Bank, Malcolm Clark, and Dick Makepeace will be backed up by junior Geoff Black and sophomore Ben Keys to form the starting six.

## Murals Today

Softball: 4:00—Lewis vs. Old West, Ruffin vs. AFROTC, Cobb vs. Winston-1 Joyner vs. NROTC, Grimes vs. Alexander, Winston-2 vs. Mangum, 5:00—Law Sch-1 vs. Med Sch-1, Dent Sch-1 vs. Peacocks, Law Sch-2 vs. Connor, Zeta Psi vs. Kap (W), Chi Psi vs. Phi Delt-2 (W), KA vs. Sig Chi (W).

## CLASSIFIEDS

FOR RENT: FOR SUMMER AND also next year. Completely and attractively furnished, 2 rooms and bath. Used as 2 bedrooms or one bedroom and sitting room. Private entrance, near hospital. Phone 9-1761, (1-1137-4)

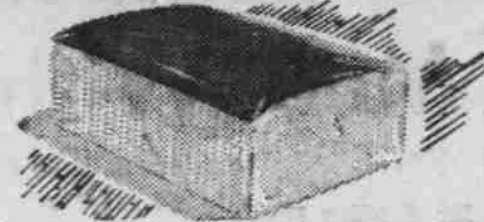
LOW NET COST IS WHAT YOU want in life insurance. Always compare with Northwestern Mutual when considering life insurance. Thompson & DeBerry, Tel. 9-3691.

FOR SALE: WHITE, 57 PLY-mouth Belvedere convert, Radio, heater, auto. trans. 3,500 actual miles. Excell. condition. Call 8-7581 from 5 to 8 p.m.

**When Birthdays Call for a Showy Gift... But the old Pocketbook Says "NO" ... Try Our Dollar Table, Pal, Try Our Dollar Table!**

**The Intimate Bookshop**  
205 E. Franklin St.  
Open Till 10 P.M.

# Jane Parker GOLD or MARBLE POUND CAKE 49¢



- SPECIAL! Jane Parker Blueberry Pies** Ea. 49c  
**SPECIAL! Jane Parker Blackberry Pies** Ea. 43c  
**SPECIAL! Jane Parker Plain — Cinnamon or**  
**SUGARED DONUTS** YOUR CHOICE! PKG. OF 12 **20c**
- SPECIAL! Jane Parker Cinnamon Loaves** Ea. 25c  
**SPECIAL! Jane Parker Peanut Butter Cookies** 6 1/4-Oz. Pkg. 19c



## EXTRA SPECIAL! "OUR FINEST" A&P FROZEN Golden Corn 2 10-Oz. Pkgs. 25c

- Fancy Frozen Apple or Peach Morton Fruit Pies** 10 1/2-Oz. Pkg. 23c  
**SPECIAL LOW PRICE! Fancy Nabisco Waverly Wafers** 1 1/4-Oz. Pkg. 25c  
**Fancy Quality — A&P White Meat Tuna** 7-Oz. Can 29c  
**Prepared With Vegetables Austex Beef Stew** 15-Oz. Can 29c  
**Rich And Full Bodied Coffee Red Circle** 1-Lb. Bag 77c 3-Lb. Bag \$2.25  
**Vigorous And Winery Bokar Coffee** 1-Lb. Bag 81c 3-Lb. Bag \$2.37

## SPECIAL 5c OFF LABEL

Hearty And Vigorous — Our Own  
**TEA** YOU PAY 8-Oz. ONLY **49c**

Hearty And Vigorous — Our Own Tea  
**BAGS** YOU PAY ONLY **49c**

- Ready To Bake Puffin  
**Biscuits** 3 Pkgs. 35c
- Nestles Chocolate  
**Morsels** 6-Oz. Pkg. 27c 12-Oz. Pkg. 49c
- Sail** Large Pkg. 23c

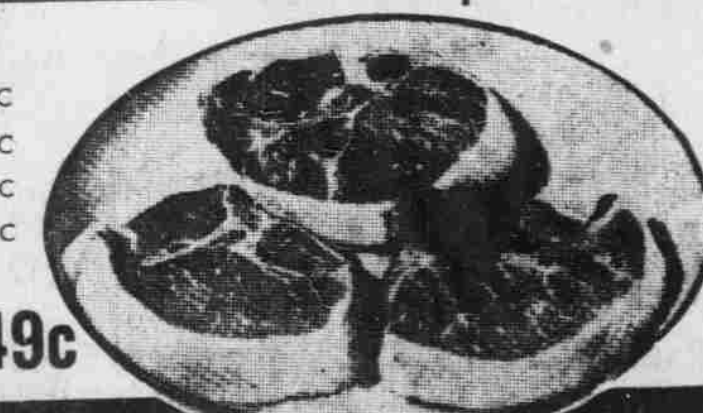
## Priced Low! Daily Fish, Liver or Regular DOG FOOD 3 1-Lb. Cans 25c

- White Meat Tuna 7-Oz. Can 39c  
Chicken of The Sea 7-Oz. Can 39c  
Snacktime Special  
Burry Oxford Cremes 11-Oz. Pkg. 29c  
Fancy Quality A&P Pineapple Juice 46-Oz. Can 27c  
Fancy Slices Of A&P Pineapple No. 2 29c  
Ann Page Imitation Flavored
- SPECIAL! Ann Page Pure APPLE JELLY or GRAPE JELLY** 2 12-Oz. Glasses 37c  
24-Oz. Bottle 33c

## Pancake & Waffle Syrup ... 33c

## THRIFT-TAGGED "SUPER-RIGHT" MEATS!

- "Super-Right" Milk Fed Veal Specials — Tendered or  
**CUBED STEAKS** Lb. 79c
- Round Cutlets Lb. 99c  
Sirloin Steak Lb. 95c
- Veal Stew Bone In Lb. 25c  
Loin Chops Lb. 99c
- "Super-Right" Fresh Pork Loin  
Half or Whole Roast Lb. 59c  
Center Cut Pork Chops Lb. 85c  
End Cut Pork Chops Lb. 55c  
Center Cut Rib Chops Lb. 75c
- "Super-Right" All Meat  
**Sliced Bologna** 1-Lb. Pkg. 49c



- Golden, Ripe Bananas Lb. 10c  
Fresh — Cuban Pineapples Ea. 29c  
Tender — Green Asparagus Lb. 19c
- Tender — Fresh Radishes 2 8-Oz. Pkgs. 15c  
Large — Golden Carrots 2 Lb. Bag 15c  
California Tasty Lemons LARGE SIZE Doz. 35c

## FRESH RHUBARB 2 Lbs. 25c

## PARD Dog Food 3 1-Lb. Cans 47c

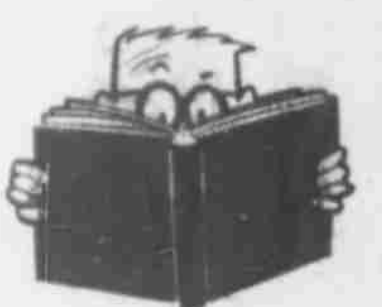
ANN PAGE **Pork & Beans** 3 21-OZ. CANS **43c**

Angel Soft White Tissue 2 400-Ct. Pkgs. 45c  
Angel Soft Colored Tissue 2 400-Ct. Pkgs. 45c

<b>all</b> 24-Oz. Pkg. <b>39c</b>	<b>Fluffy all</b> 3-Lb. Pkg. <b>79c</b>	<b>Super Suds</b> Lg. Pkg. <b>35c</b>	<b>Vel Powder</b> Large Package <b>34c</b>
<b>Vel Liquid</b> 16-Oz. Can <b>40c</b>	<b>Florient</b> HOUSEHOLD DEODORANT Reg. Can <b>79c</b>	<b>Fab</b> Lg. Pkg. <b>34c</b> Gt. Pkg. <b>81c</b>	<b>All</b> 23 Lb. Pkg. <b>\$4.95</b>



## MEMO FROM George Coxhead



Short course in lifelong economics for college seniors!

If you are soon going to graduate, you'll be interested in learning about New York Life's program of life insurance especially suitable for college students.

Several attractive plans are available for you to choose from. And because you are young and still a student, you enjoy the money-saving advantage of low premium rates. What's more, through my personal arrangement you can defer payment of the first premium until after you graduate.

Get all the valuable facts on New York Life's attractive, low cost way to financial security. Send for your free copy of the informative booklet, "It's Your Move, Joe..."

write... phone... or visit

George Coxhead  
Campus Representative  
**New York Life**  
Insurance Company  
Address  
Phone Number  
PHONE 9-2052

## the most practical formal made!

**Stain-Shy**  
• RESISTS STAINS  
• REPELS WATER  
• WRINKLE PROOF



Smart and comfortable shawl collar styling, plus practical "Stain-Shy" fabric finish add up to greater summer formal enjoyment. Single or double breasted... white or pastels.

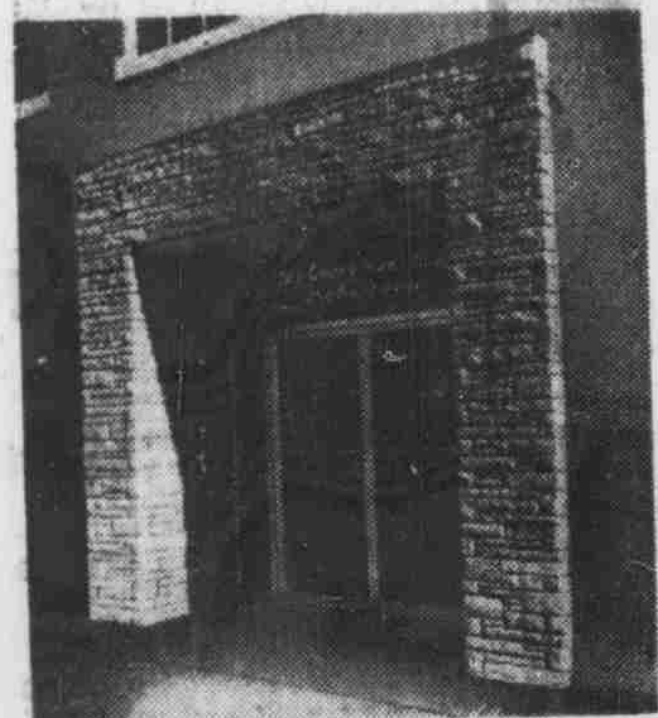
**\$34.50**

Your Formal Wear Headquarters

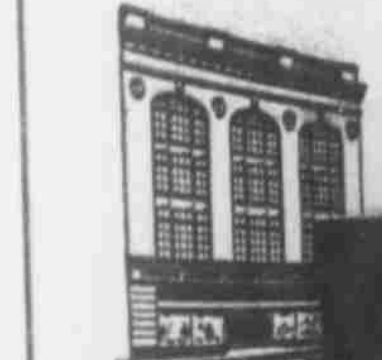
From \$12.95

STEVENS-SHEPHERD

**Now!** ... for your convenience a new and beautiful direct entrance from the city parking lot welcomes you to the greater Young Men's Shop in Durham



You'll find our spacious store a wonderful place to browse—or shop in. You'll find all the new styles in men's clothes college men prefer... and priced so reasonably.



**The Young Men's Shop**  
205 E. Franklin St.  
DURHAM

Bills Mailed Home Upon Request