

dine western-style
at the Ranch House
on
TUESDAY'S

The Frankest... Frenchiest... Funniest
BARDOT
Ever!



CHARLES BOYER
HENRI VIDAL and
Brigitte Bardot
La Parisienne

LAST TIMES TODAY
VARSLY
theatre

Covering The Campus

CARDBOARD
The Carolina Cardboard Club meets today, 7 p.m., in Emerson Stadium offices for Yack pictures and election of new officers. The Awards Banquet has been postponed.

PLACEMENT BUREAU
The following companies will interview on campus Dec. 7-16.

IRVING TRUST CO., U. S. IMMUNIZATION AND NATURALIZATION AGENCY, WESTINGHOUSE ELECTRIC CORP., LEVER BROTHERS, GENERAL TELEPHONE CO. OF THE SOUTHEAST, GULF OIL CO., TEXACO, CENTRAL INTELLIGENCE AGENCY, COMBINED INSURANCE CO. OF AMERICA, S. S. KRESGE, BARNETT NATIONAL BANK, DAVISON-PAXON, WACHOVIA BANK, NATIONWIDE INS. CO., UNION BAG-CAMP PAPER CO.
See the Placement Service for further details.

EMPTY STOCKING FUND
Students can enter the spirit of giving by contributing to the Empty Stocking Fund. Articles ranging from staples such as sugar, flour or bread to toys and other presents will be appreciated by recipients. Students interested in adopting a family of contributing articles to the fund are asked to contact the Junior Service League through Mrs. Richard Hecks, Tel: 86607.

ELISHA MITCHELL SOCIETY
The 55th meeting of the Elisha Mitchell Scientific Society will be held today at 7:30 p.m. at 206 Phi Eps Hall. Speakers will be Dr. J. H. Wells of the Mathematics Dept., who will discuss "Real Number Sequences", and Dr. D. G. Humm of the Zoology Dept., who will talk on "Some Aspects of Metabolism in Pigmented Tumors in the Mushroom Agaricus Campestris".

ECONOMIST TO SPEAK
Dr. Charles E. Walker will speak before the Seminar in Economics and Business Dec. 10 at 4 p.m. in the Carrol Hall faculty seminar room. Walker, assistant to the Secretary of the U. S. Secretary of the Treasury, will speak on "Treasury Dept. Management: Principles and Practices". The seminar is made possible by the Business Foundation of North Carolina.

YRC
The Young Republican Club will hold its regular meeting today at 1 p.m. in the law school courtroom, second floor, Manning Hall. Dr. E. P. Deuglass, UNC professor of history now on two year leave of absence, will discuss the controversial subject of the American free enterprise system and its role in our economic life. The public is invited.

ED WIVES CLUB
The Ed Wives Club will meet tomorrow at 8 p.m. at the home of William D. Perry, 1 Cornwallis Rd. The program will be decorations for the Christmas season.

SACK HOP
The Student Nurses Association is sponsoring a Sack Hop on Friday, Dec. 11, from 8-12 p.m. in the Rec Room of the Nurses' Dorm. Admission is 25 cents per person. Refreshments will be served.

MATH COLLOQUIUM
Dr. Neal H. McCoy, visiting professor at UNC, will address the Mathematics Colloquium tomorrow at 4 p.m. in room 320 Phillips Hall. The topic of Dr. McCoy's talk will be "Prime Ideals".

At present Dr. McCoy is professor of mathematics at Smith College and is currently teaching under auspices of the National Science Foundation's third academic year institute for high school teachers of science and mathematics at UNC.

CHRISTMAS CHEER REQUESTED
Is there a fraternity, sorority or dormitory which will help sponsor a Christmas Party for a ward at Dix Hill Mental Hospital? If so, please contact D. Clark, Intern Chaplain, at the Y immediately.

DIX HILL PROJECT
This week and next will be the last trips this semester, with parties planned for the 15th and 16th. All volunteers, including those who have not gone out this semester but who are interested, are urged to make the trips leaving the Y at 1:30 p.m. on Tuesday and 1:45 p.m. on Wednesday.

CAROLINA QUARTERLY
There will be a general meeting for all staff members and any new people interested in working for the literary magazine at 7 p.m. in Roland Parker II at Graham Memorial, Wednesday night.

DORM PARTY
The Mangum-Grimes Christmas Party will be held Dec. 12, 8:30 p.m. at the Homestead Cabin. Nick Kearns will furnish the music.

NEED RIDE
Anyone who needs a ride or wants someone to ride home with him Christmas vacation may bring or call this information in to the Daily Tar Heel office in Graham Memorial (phone-22138) and it will be printed in Thursday's issue. The person's name, local address, telephone number, destination and time wishing to leave and return to campus should be included in the notices.



As part of the Law School Mock Trial, Sally Pullen is being arrested for the murder of Davis Young. Taking part in the arrest are Lieutenant Graham Creel of the Chapel Hill Police Department and Peter Maydanis, Sheriff of Manning County.

Student Council Hands Down Official Reprimands To Pair

Official reprimands were handed down Thursday night by the Student Council to two Carolina students found guilty of trespassing on the grounds of Gimbohol Castle and illegally entering the building. The pair was charged at the hearing by a member of the Order of the Gimghouls, representing the organization. Chairman Erwin Fuller, in expressing the opinion of the Council, reminded students that the castle is private property not belonging to the University, and pointed out that the rights of private property are among the most basic in our American system. The Order has been concerned recently because Carolina students have shown almost no reluctance about trespassing on the castle ground, especially on weekends. Not only is the action a breach of proper conduct, but it is likewise a violation of statutory law, and the Council will not condone this type of behavior.

Pearl Harbor Anniversary

PEARL HARBOR, HAWAII, (AP)—Hawaii Monday observed the 18th anniversary of the Japanese attack on Pearl Harbor with a brief, quiet ceremony centered on the sunken hull of the USS Arizona. Wreaths came from the far corners of the United States. They were placed at the base of a temporary flag pole on the submerged wreck of the battleship in which 1,102 men were entombed as she sank the morning of Dec. 7, 1941. Among them was one blessed in Independence Hall, Philadelphia, home of the liberty bell. It was brought to Hawaii by Andreas Lippi, Philadelphia poet and student of Navy history. He represented Mayor Carl Youngberg of Cape May, N. J., oldest city in the Delaware Valley. Among the group paying homage to the dead were Sen. Barry Goldwater (R-Ariz); Lt. Gov. James Kealoha of Hawaii, Adm. Harry D. Felt, commander of U. S. forces in the Pacific, and Adm. Herbert G. Hopwood, commander in chief of the U. S. Pacific fleet. After prayers were ready by Catholic, Jewish and Protestant chaplains, a rifle volley echoed across the bay. It was a grim reminder of the day when America was plunged into World War II. Another simple ceremony took place at the National Memorial Cemetery of the Pacific on top of Punchbowl, an extinct volcano crater in Honolulu. Church services were held in the morning throughout the island of Oahu. Admiral Felt, in a statement, said the Pearl Harbor attack "represents the thunderbolt which plunged our country into the most frightful war in the history of mankind." He urged Americans to consider the event "as a sober reminder of this nation's dedication to the cause of preserving world peace."

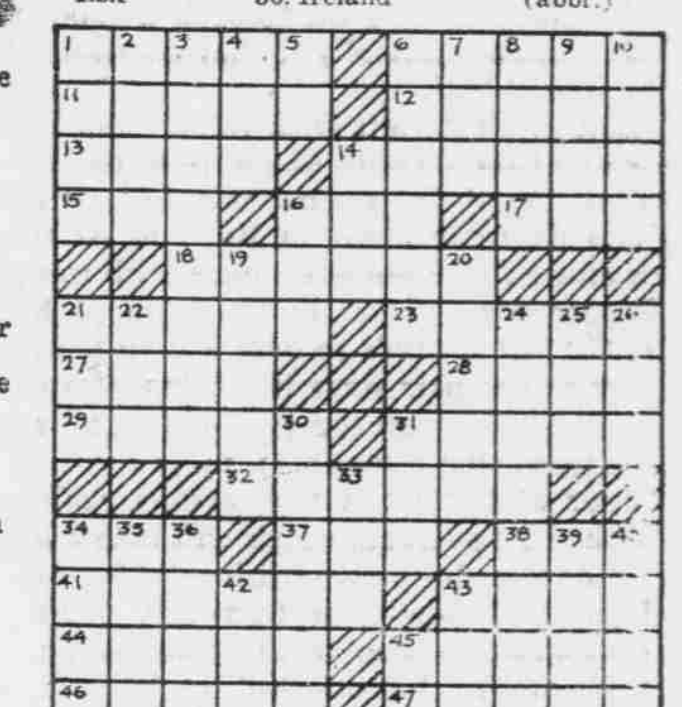
PHI BETA INITIATION
Phi Beta Kappa initiation will be held in Di Hall this afternoon at 5 p.m.

DAILY CROSSWORD

ACROSS
1. Variety of coffee
6. Shaft
11. Grayish
12. Means of communication
13. Cabbage salad
14. Vote
15. The piper's son
16. Droop
17. Half ems
18. Learned teacher
21. Glossy
23. God of love
27. Engine cover
28. African river
29. Miss Laurie
31. Obtuse or acute
32. Rots
34. Observe
37. Roman house god
38. Undressed hide of young steer
41. Separated
43. City on the Arno
44. Variety of willow
45. Resolute
46. Waits upon
47. Projecting ends of churches

DOWN
3. Dempsey was one
4. Chop
5. Indefinite article
6. Catos-trophic
7. Boy's nickname
8. Not working
9. King of beasts
10. Plots of land
14. Not good
15. Curve in ship's planking
19. Unfasten
20. Mackerel-like, oily fish
24. Foot-balls
25. Sick
26. River (G. B.)
30. Lam-prey
31. Swiss river
33. Bounder
34. Blemish
35. Relieve
36. Ireland
39. Small island
40. Comper sates
42. Mr. Husing food
43. Invalid's food
45. Masurium (abbr.)

Yesterday's Answer
39. Small island
40. Comper sates
42. Mr. Husing food
43. Invalid's food
45. Masurium (abbr.)



Wuddabout This?

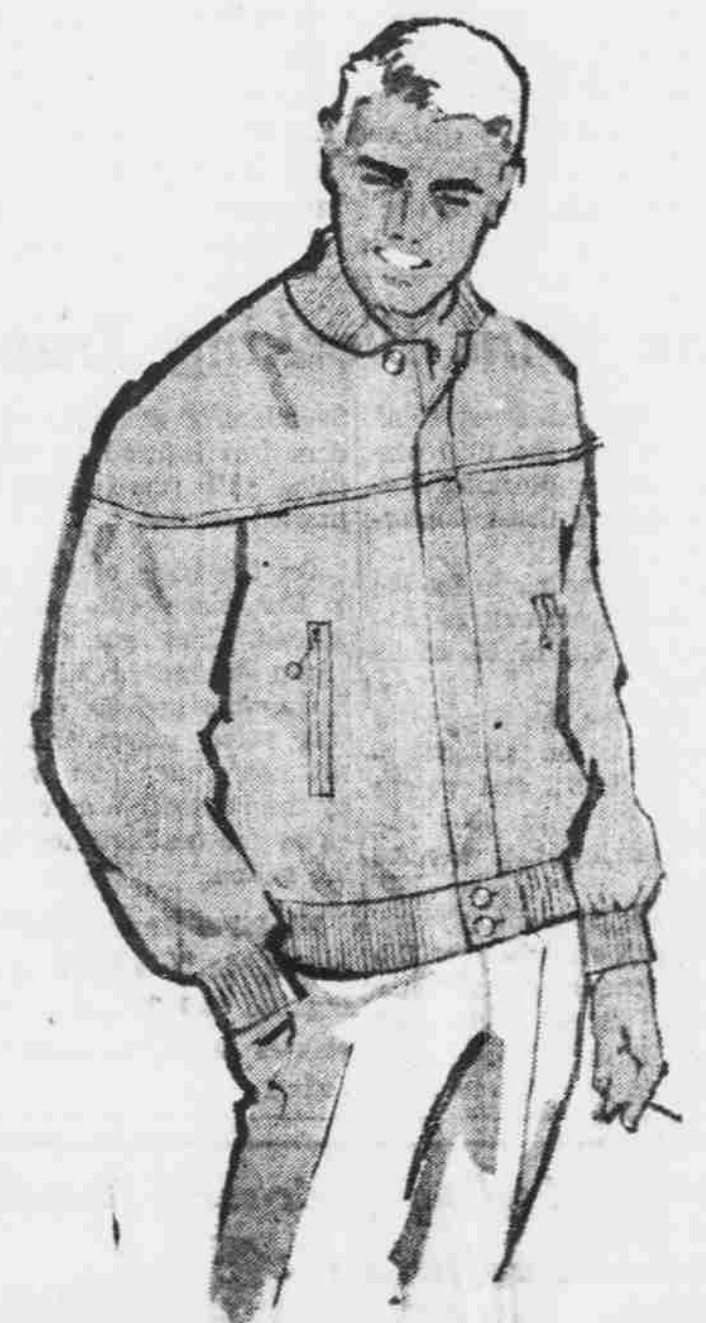
1. The campus is hungry.
2. The Rathskeller serves the most authentic pizzas.
3. The campus must produce a vastly greater thirst hunger.

Wednesday
Is The Day!

See **Stewart's** exciting
New Holiday Styles
on WTVD at 4:00 P.M.
"For Ladies Only"

The HUB of Chapel Hill

★ PRESENTS ★
The HILL'S Most Outstanding
New Styles In
JACKETS



Our New Jackets Are Perfect For Casual Campus Wear
★ New Subtle Colors Olives, Greys, Plaids
★ Fur Lined, or Plain
★ Ribbed Cuffs and Collars or Plain

from \$10.98

TRY OUR CONVENIENT CHARGE PLANS
Send Bill to Student
Send Bill to Parents

The HUB of Chapel Hill
103 E. Franklin Street

easiest travel on earth



COURTEOUS HELPFUL EMPLOYEES ENJOY SERVING YOUR NEEDS.

TRAILWAYS

From the very beginning of your Trailways trip you'll enjoy the considerate helpfulness of Trailways personnel. They are trained specialists who's only job is to make sure you get the most in comfort and relaxation when you ride Trailways. Air-conditioning, reclining seats, and complete restrooms add to your travel enjoyment.

From CHAPEL HILL	1-way	1-way	
• NEW YORK	\$13.40	• NORFOLK	\$ 5.65
• Thru Express service		• Thru Express service	
• WASHINGTON	\$ 7.95	• GREENSBORO	\$ 1.45
• Thru Express service		• 9 Convenient trips daily	
	(plus tax)		(plus tax)

UNION BUS TERMINAL

311 W. Franklin St. Phone 4281

CHRISTMAS IN JULY



NEW COLOGNE
OUTWITS WARM WEATHER!
Try this new snow-cool fragrance for a merry summer. 2.50 • 1.50

Sutton's
DRUG STORE
CHAPEL HILL, N.C.

If You Are Interested In
RETAILING
You'll Be Interested in
KRESGE'S

- We are opening a large, modern, variety department store every 5 days.
- We now have over 730 stores in 33 states, Canada, and Puerto Rico, and will be in 43 states by 1961. Our annual volume exceeds \$400,000,000.
- We have a training program that is planned for ambitious young men. It is difficult, but interesting.
- All promotions are within our company and based wholly on merit.

Our representative, Mr. Hunt, will be on the campus on Dec. 9. For further details arrange for an interview through your placement office.

S. S. KRESGE COMPANY