

Death Toll Set At 300 In Explosion

SARBRUCKEN, Germany (UPI) — Saarland officials set the death toll Thursday at about 300 in the gas explosion which ripped through the Luisenthal coal mine Wednesday with a blinding flash of flame and a shock wave that killed like a sledgehammer.

Carl Hugo, director of the Saarland Mines Commission, announced 223 bodies had been recovered. He said approximately 10 or 15 men were missing and that "there are no longer any prospects that they can be rescued." Of the 100 miners who escaped 81 are on the critical list, he said.

Hugo's announcement brought an end to the mass vigil kept by crowds of tearful women and children outside the mine. One woman, mother of three sons lost on the same shift, traged home after 24 hours at the mine. A few

1 Large Plain Pizza
Only 10c With
Purchase of 1 large Pizza
ZOOM-ZOOM 8-11

Carolina

NOW PLAYING
WHERE WERE YOU ON
DEC. 7, 1941



starring
TOSHIO MIFUNE Admiral Yamaguchi
A RILEY JACKSON ROBERT PATRICK Presentation
A PARADE RELEASE - A Toho Co. Ltd. Production

FEATURES AT: 1-12 - 3-04 -
4-56 - 6-48 - 8-40

stayed on though hope was gone. Officials said they were convinced an explosion of methane gas caused the disaster, and despite the safety precautions which have won the mine many safety awards, the miners apparently opened up a gas pocket which was set off by an electric spark.

Hugo disclosed that officials first considered sealing off three side tunnels, entombing the men where they had fallen, but that later inspection showed the tunnels were safe. The mine itself was closed while officials and weary rescue workers checked through the rubble.

U. S. Army helicopter teams which flew to help carry the injured miners to hospitals returned to their bases.

It was the worst mining disaster since 1946 when 412 persons died in a Ruhr coal mine blast.

All of the nation was in mourning. The government announced in Bonn that President Heinrich Lübke would deliver a funeral oration at a mass funeral on Saturday.

U. S. Army helicopter teams which flew to help carry the injured miners to hospitals returned to their bases.

It was the worst mining disaster since 1946 when 412 persons died in a Ruhr coal mine blast.

All of the nation was in mourning. The government announced in Bonn that President Heinrich Lübke would deliver a funeral oration at a mass funeral on Saturday.

U. S. Army helicopter teams which flew to help carry the injured miners to hospitals returned to their bases.

It was the worst mining disaster since 1946 when 412 persons died in a Ruhr coal mine blast.

All of the nation was in mourning. The government announced in Bonn that President Heinrich Lübke would deliver a funeral oration at a mass funeral on Saturday.

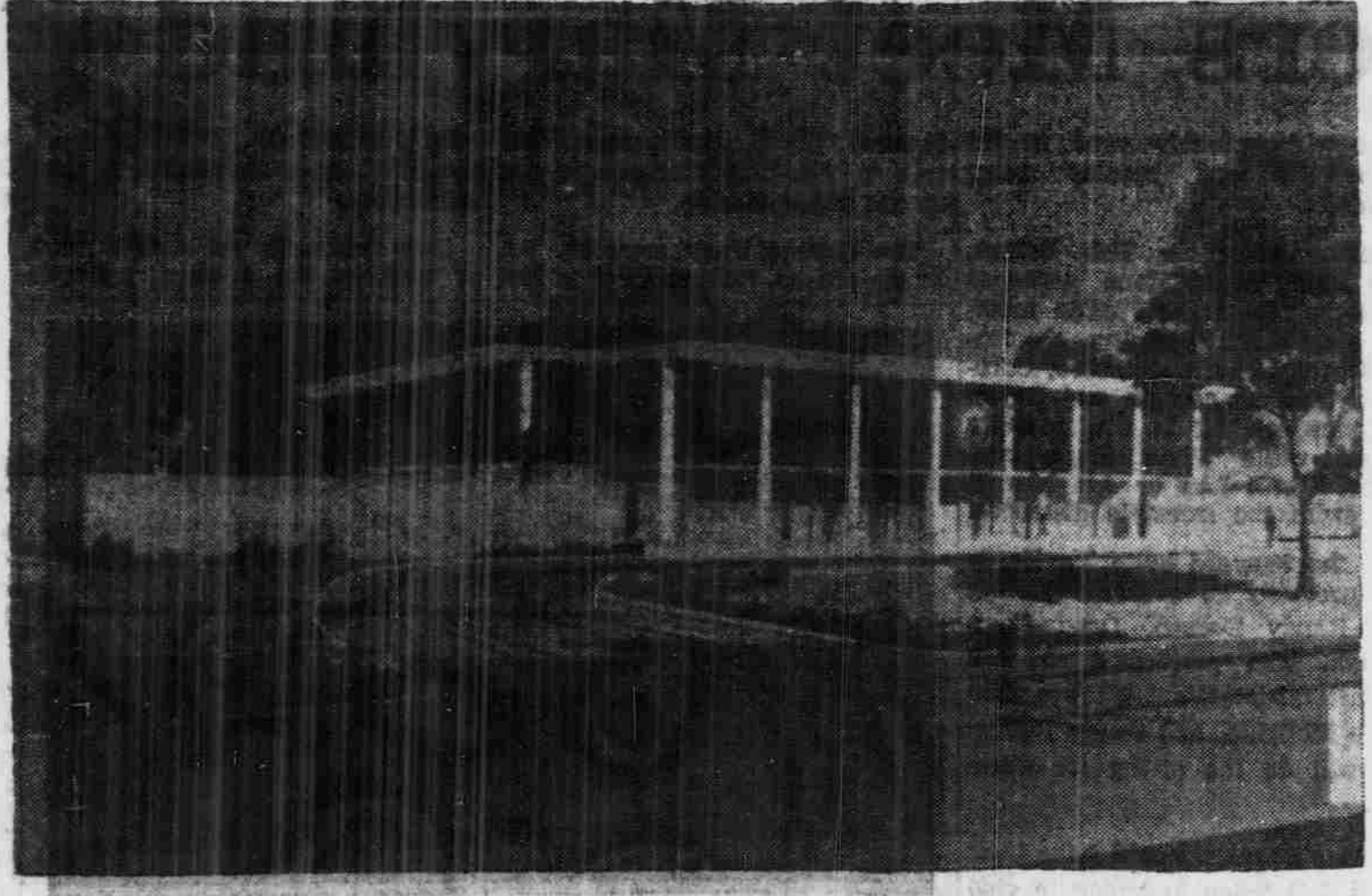
PATRONIZE YOUR ADVERTISERS

WATCH and JEWELRY REPAIR

We use the latest electronic and ultrasonic equipment. Years of experience back our guaranteed work.

T. L. KEMP
Jewelry

Phone 942-1331
135 E. Franklin St.



Pictured here is the artist's conception of how the new ZBT house will look. The house which will be started soon, is to be the first one constructed on the new fraternity court on the Raleigh highway. Plans for the house were released today.

ZBT Releases Architect's Plans For Chapter House

Zeta Beta Tau Fraternity yesterday released drawings of its new house that will be the first to be built in the new fraternity court on Finley Golf Course Rd. Construction of the \$200,000-plus house is expected to start this Spring.

The two-floor house will be located at the southeast corner of the new fraternity court, fronting on Finley Rd. and overlooking the golf course in the rear. It is being built for ZBT by the Alpha Pi of ZBT Foundation, Inc.

The living and dining areas of the brick house will be on the first floor and will include a three-room housemother's apartment, a sunken living room with fireplace, a dining room with seating for 80 persons, kitchen, music room and chapter meeting room.

Sliding glass doors on the first floor will open onto an inner courtyard surrounded by a brick wall. The courtyard may also be reached by two second floor stairways at the rear of the house.

All sleeping rooms will be on the second floor, with each room opening onto a screened balcony and an inner hallway. Each bedroom will contain separate study facilities for each occupant.

A paved parking lot will be adjacent to the house and the architects expect that most of the trees now on the lot will be left for shade.

The house is expected to "fulfill the housing needs of the present and future membership of the fraternity," Foundation President Alan B. Heilig stated. "We want it to be a credit to the University and the fraternity."

Recruiters Here Today

WANTED—A PART TIME EVENING waiter, experience preferred but will accept hard worker. Call the Carolina Coffee Shop, 942-1175.

YOU HAVE TO PAY FOR OLD age someday. Either you pay now, while you have the money, or you pay when you have no money. Let a Northwestern Mutual agent show you how little it cost now. Arthur DeBerry, Jr. C.L.U. Telephone 942-6966.

WANTED: RESPONSIBLE PERSON to assume established paper route. About 1 1/2 hours per day with earnings \$15 to \$25 per week. Married students preferred. Car necessary. Call 942-5953 after 5 p.m.

Monday: Armstrong Cork Co., National Aeronautics and Space Administration, American Viscose Corp., and Housing and Home Finance Agency.

Tuesday: Armstrong Cork Co., Chemstrand, The Trust Company of Georgia, E. I. du Pont de Nemours, Furman University, and Keppers Company, Inc.

Wednesday: E. I. du Pont, Monsanto Chemical Co., and First National Bank of Atlanta.

Thursday: Mutual of New York, Colgate-Palmolive Co., Southern Bell Telephone, American Telephone and Telegraph, and Western Electric.

Friday: Texaco, Inc., National Security Agency, and Atlanta Life Insurance Co.

BUDDY NIGHT AT THE ZOOM-ZOOM 8-11

Shop Now for final Fall and Winter Reductions

SEMI-ANNUAL GIVE AWAY ENDS SATURDAY

Sharyn Lynn Shoppe

135 E. Franklin Phone 942-2516

Kennedy Trying To Corner Reds On N-Test Questions

By STEWART HENSLEY (United Press International)

WASHINGTON—President Kennedy is trying to maneuver Russia into a corner on the atmospheric test question in an effort to achieve a real "break-through" toward an effective nuclear test ban.

The President's strategy has become increasingly clear in recent days.

The American and British proposal Thursday for a Big Three foreign ministers meeting to open the Geneva disarmament conference next month was one part of this strategy aimed at bringing a halt in the nuclear arms race.

Soviet Premier Nikita S. Khrushchev most likely will cry "blackmail" when the full pattern of U.S. moves becomes clear. However, American and British officials believe that Kennedy's course will underline the fact that Russia is to blame for the race if it must continue.

American officials involved in the matter expect Kennedy to announce at the end of this month his reluctant decision to resume atmospheric tests in about eight weeks. He will couple the announcement with another U.S. pledge to work diligently meanwhile, to try to achieve a disarmament agreement that will rule out the need for such tests.

The Geneva disarmament conference, convening a couple of weeks after the expected announcement, will meet with the full knowledge that U.S. atmospheric tests are to be resumed unless Russia comes quickly to terms on a foolproof test ban treaty. It will be emphasized that work on such a treaty was near completion when Russia last September stopped negotiating and broke a three-year moratorium on atmospheric blasts.

The U.S. hope is that the Soviet Union, at the Geneva talks, will be under heavy and increasing pressure from other countries, including the neutrals, to come to terms with the United States and Britain in an effort to head off the new series of American tests.

Let Books Say I Love You . . .

When Valentine's Day comes around—as it will, pall, as it will—don't go after big game with a pea-shooter.

Cards are all right — we have some honeys — but if you really want results, give her something with class and endurance.

Like a book, eh?

You said it, chum. Like LOVE IS A SPECIAL WAY OF FEELING, or maybe FOR YOU WITH LOVE, or, if you're going to be within reach when she reads it, like THIS IS MY BELOVED.

Come on down to the Intimate and think it over. Sometimes a small investment pays off in lifetime dividends!

ANNOUNCING the Opening of Byron's

Located in the rear of the Carolina Coffee Shop on East Franklin Street.

24 HOURS A DAY 7 DAYS A WEEK

featuring
STEAKS — SEAFOOD, SPAGHETTI, REGULAR and SPECIAL SANDWICHES

Complete Breakfast Menu
WAFFLES! HOT CAKES

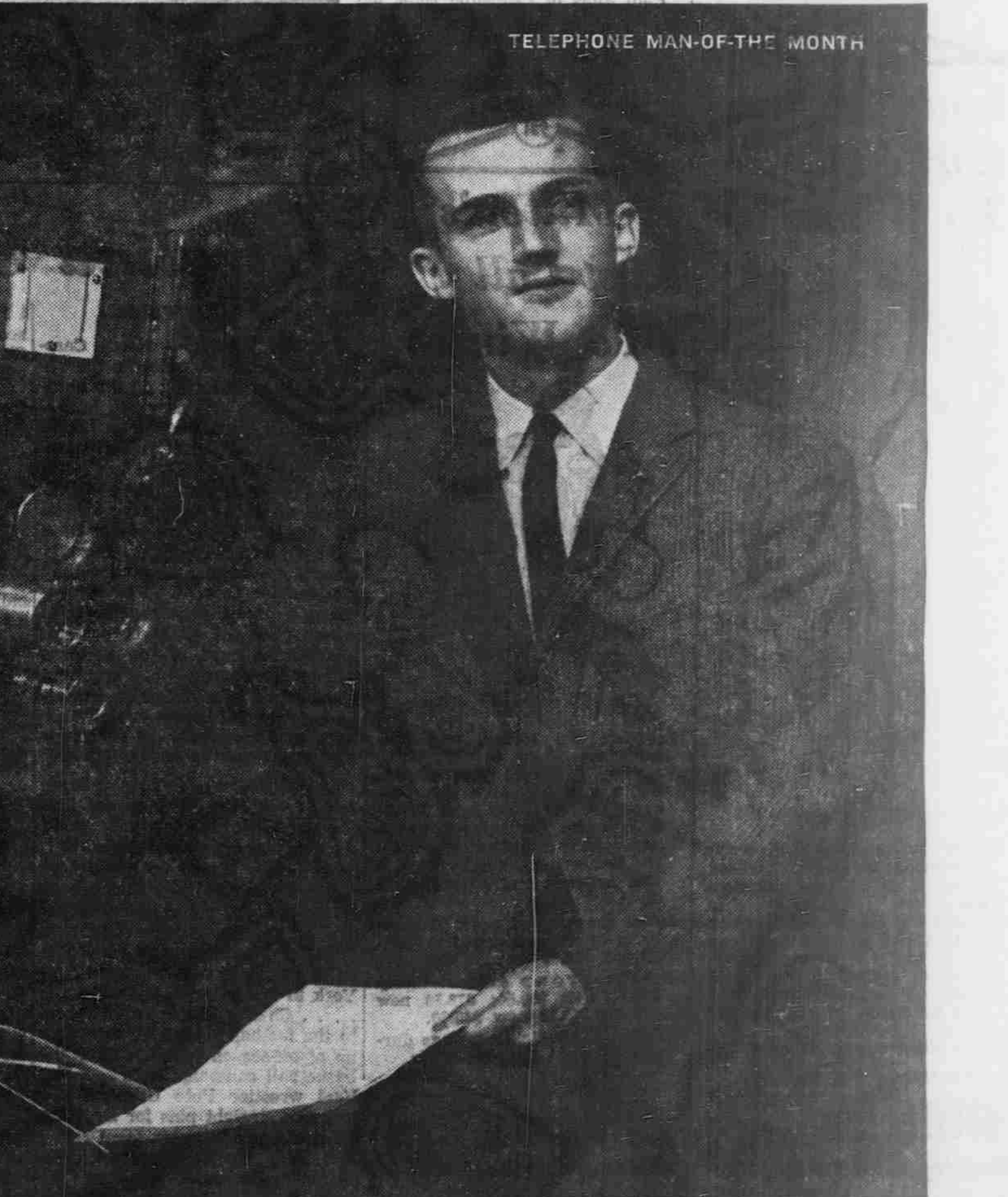
"Good food served promptly in pleasant surroundings and at reasonable prices."

Dr. William E. Beel
OPTOMETRIST
Above Ledbetter-Pickard
Phone 942-5260
VISION ANALYSIS
CONTACT LENS
GLASSES FITTED

THE BELL TELEPHONE COMPANIES SALUTE: ROGER DAUB

Roger Daub is an Advertising Assistant with Ohio Bell Telephone Company. Here his creative touch helps shape the commercial messages his company presents on local radio and television. Roger is also responsible for sales promotion activities that keep local subscribers informed about helpful new telephone products and services.

Roger Daub and the other young men like him in Bell Telephone Companies throughout the country help bring the finest communications service in the world to the homes and businesses of a growing America.



DAILY CROSSWORD

ACROSS
1. Tenure
5. Front of leg
9. Pertaining to birds
11. Discontinue
12. Right-hand page
13. Corridors
14. Waste allowance
15. Resolves into elements (gram.)
16. Merits
18. Transcendental school leader
21. Clan division: Gr.
24. Language of Wales
25. Sandy drift (geol.)
27. Conclude
28. Sound motion pictures (collog.)
30. Rub out
31. Click beetle
34. Undertaking
38. Kind of potter's wheel
39. Crucial
40. Pays one's part (cards)
41. Shakespeare's Katharine
42. Not far distant
43. Sweet potatoes

DOWN
2. Fruit pie (G.L.)
3. Always
3. Dimmer
4. Signifies
5. Scoreless
6. Dutch painter
7. of Man
8. Headlined
10. Denial
11. TV bands of frequency
15. Professional athlete (collog.)
17. Source of furniture woods (2 wds.)
18. Female sheep
19. People
20. Old times
21. Supernatural object (Am. Ind.)
22. Busy as a
23. Bitter vetch
26. Roughly lined
29. Rhine tributary
30. Anesthetic
31. Ardor
32. Steamship route
33. "— boy"
35. Emanation
36. Staunch
37. Gingko trees
39. Like

Yesterday's Answer

1	2	3	4	5	6	7	8
9			10		11		
12				15			
14				15			
16	17						
18	19	20			21	22	23
24				25	26		
27			28	29			
			30				
31	32	33			34	35	36
38					39		
40					41		
42							43

P O G O

TRY IT ONCE MORE... I'LL READ ANOTHER BOFF FROM DOG'S LIFE... IT'S ABOUT A LAUNDRYMAN WHO THOUGHT HE'D HADTA GET A DIFFERENT JOB...

ANY ALL BECAUSE HIS WIFE SAID, 'HARRY, YOU'LL JUST HADTA GET A NEW LINE.'

WRF!! YOU GOT IT! 'BOUT THE LAUNDRYMAN!

NO... IT JUST OCCURRED TO ME THERE WAS SOMETHIN' FUNNY 'BOUT THEM AXE MURDERERS ROLLIN' A-HEAD... MEBBE YOU DIN'T QUITE UNDERSTAND THAT ONE YESTERDAY?

PEANUTS

AREN'T THOSE GLASSES KIND OF A NUISANCE, LINUS?

NOT REALLY...

SOMETIMES THEY CAN ACTUALLY FREE MY HANDS FOR WHATEVER ELSE I MIGHT WANT TO DO...