

**Volunteers Needed For Transportation**

The YW - YM Murdock Committee is soliciting help in transporting students to Murdock School for Mentally Retarded Children at Butner, N. C., each Thursday between 2 o'clock and 5:45 p.m.

Anyone interested in helping one Thursday a month may contact Mary Ann Brown, 311 E. Franklin Street, 968-9089. Volunteers will receive reimbursement for expenses.

**Angel Flight Initiates Eleven New Members**

The UNC AFROTC Angel Flight welcomed eleven new pledges in a special candle-light ceremony at their regular meeting Monday night.

New pledges are: Judy Atchley, Rutherford; Ernestine Craig, Salisbury; Judy Edmondson, Charlotte; Dianne Gallimore, Greensboro; Jean Griffin, Charlotte.

Lee Henry, Chapel Hill; Sheila Knedlik, Greensboro; Nancy Litton, High Point; Betty Oldham, Greensboro; Betty Pemberton, Greensboro; Elizabeth Verdun, Asheville.

The new Angels will undergo a five-week pledge program under the direction of Connie Croom, Angel Flight Executive Officer.

Upon completion of the pledge program, the girls will be formally initiated.

**Janitors At Duke Unionize**

Janitors and maids employed by Duke University have decided that they've been taken to the cleaners too long.

Last week, 110 maids and janitors employed by Duke took a step towards unionization and formed the Duke Employees Benevolent Society.

The Society was formed to keep the possibility of unionization alive after 90 per cent of Duke's maids and janitors signed a petition seeking wage changes three weeks ago.

Maids at Duke make 85 cents per hour and janitors make between 90 cents and \$1.05 per hour. If a maid or janitor is injured on the job, he is covered by a menial disability insurance program, and his family receives no money.

The Duke pension plan for employees is now paying one janitor who retired after 21 years of service a total of \$96 per year.

The petition calls for a program which would raise salaries of Duke's maids and janitors to the minimum federal wage level of \$1.25 within two years.

Duke University Business Manager John Dozier was quoted by the Duke Chronicle as estimating costs for the final demands of the petition would exceed \$1 million per year.

The Chronicle has editorialized against the wage program. Duke University trustees have made no decision on the controversy.

**Cosmopolitan Club Installs Officers**

Officers for the Cosmopolitan Club for 1965-66 were installed Monday night at their meeting in Lenoir Hall.

They are: Abdo Bardawil, Lebanon, president; Ian McDonald, Canada, vice president; Peg Maerz, U. S. A., secretary; Emily Vickers, U. S. A., treasurer; Diane Copeland, U. S. A., and Christopher Muyangana, Zambia, cultural chairman; Fumio Tao, Japan, and John Barrett, U. S. A., social chairman.

**Monday Last Day To Reserve Rooms**

Monday is the deadline for reserving men's dormitory rooms for next summer and fall.

Students now living in residence halls must make a \$10 deposit, and students living outside residence halls must pay the full rental fee by that date.

**EVERYTHING IN BOOKS**

**THE BOOK EXCHANGE**

"The South's largest and most complete Book Store" AT FIVE POINTS DURHAM, N. C.

**5 WEEK**

**PERSONAL TYPING COURSE**

Begins March 11, 1965

Tuesday and Thursday afternoons

1:00-2:30

Tuition for Course: \$30

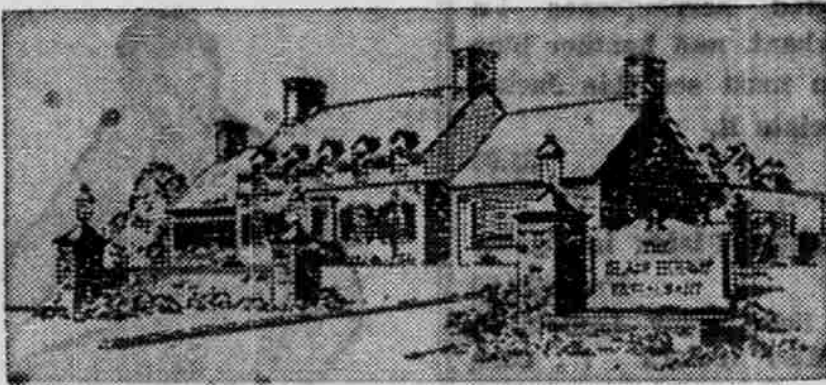
Call to Register Today

**Town Classes Secretarial College**

Chapel Hill, N. C.

159 1/2 E. Franklin Phone 942-4797

For a relaxing meal come to . . .



**The Blair House Restaurant**

Durham-Chapel Hill Blvd.

Banquets — Receptions — Private Parties For information Call 489-9128

BRITAIN'S ACADEMY AWARD WINNER BEST ACTRESS

**LESLIE CARON**

"Sex is not a forbidden word!"

**THE SHAPED ROOM**

TOM BELL BERNARD LEE - BROCK PETERS - CIGELY COURTNEIDGE (THIS IS AN ADULT PICTURE)

PATRICIA PHOENIX & EVELYN WILLIAMS • produced by JAMES WOOD & RICHARD ATTERBOROUGH

without the advice and direction of BETTY FORBES • A ROMULUS PRODUCTION • A COLUMBIA PICTURES RELEASE

**Carolina** TODAY ONLY

**PINE ROOM presents another special**

**Chicken Pack**

A delightful snack with delicious

- Southern Fried Chicken (Two pieces)
- French Fries
- Rolls
- Pickle Garnish

SERVED EVERY DAY — ANYTIME

**50c**

**Snack Bar and Cafeteria**

**CLASSIFIED ADS**

LAKE FOREST — NORTH Lakeshore Drive House — 3 bedrooms, 2 baths, screen porch, 1 acre wooded, under \$30,000. By appointment. Call: Jim Bickford, 942-2921.

**Competition SLOT RACING Tonight 7:00 P.M.**

**BILLY ARTHUR**

EASTGATE

**PATRONIZE YOUR ADVERTISERS**

**GOLF CLUB SPECIAL**

7 Club George Fazio Set

3 - 5 - 7 - 9 Irons

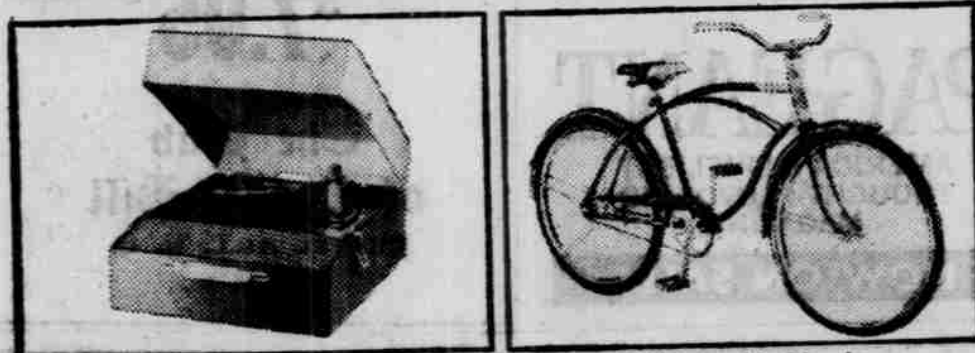
1 - 3 Woods THE Putter in WORKS \$33.00

Plaid Bag

**PLUS 12 NEW SPALDING BALLS**

**W. T. GRANT CO.** Eastgate Shopping Center

**Win valuable prizes in the Burger-Chef/Pepsi "FAMILY FUN SWEEPSTAKES"**



Here's a local contest that's really easy to win! No box tops to mail! No jingles to write! Just pick up your free Entry Blank at your nearby Burger-Chef... write your name on it... then drop it in the collection box right there on the Burger-Chef counter! That's all you do, and you're entered in the Burger-Chef/Pepsi "Family Fun Sweepstakes." You get a chance to win valuable prizes—and an opportunity to enjoy icy-bright Pepsi-Cola along with a juicy Burger-Chef burger. Enter often, but hurry! Contest closes March 27!

**GET FREE ENTRY BLANK AT BURGER-CHEF**

**337 West Rosemary**

Home of the World's Greatest 15¢ Hamburger!

**Upcoming Events Around The Hill**

All Campus Calendar items must be submitted in person at the DTH offices in GM by 2 p.m. the day before the desired publication date (by 10 a.m. Saturday for Sunday's DTH). Last and Found items will be printed on Wednesdays and Saturdays only.

this area which he will lead this summer.

**MOVIES**

Carolina — Strange Bedfellows  
Varsity — None But the Brave

**FRIDAY**

Meeting of current and prospective tutors working program — 4 p.m., Gerrard Hall. All students presently engaged in tutorial work in

Chapel-Hill, Carrboro, Durham, and Hillsboro are urged to attend, along with anyone who might be interested in assisting this program for improving the school performance of children in grades 1-12.

Theatre Workshop will hold an election of officers at the D.A. Table in Lenoir Hall. All members and interested students are asked to attend, or submit their vote in writing.

**Stray Greeks**

Baptist Student Union — 5:45 p.m., Melvin Hips, "The University's Responsibility to Its Students as Learners."

Hillel Sabbath Services — 7 p.m., Hillel Chapel.

Kappa Alpha Theta sorority is looking for any members that might be around campus. KAT's plan to colonize next fall. Stray Greeks may contact Mr. James Egan, 968-2722.

**THE CAPTAIN'S TABLE**

**OCEAN FRESH SEAFOOD**

Oysters — Butterly Shrimp — Scallops  
Broiled or Pan Fried Flounder, Trout and Porgie  
Mr. Crab Cakes — Homemade Clam Chowder  
It it's not fresh, we don't serve it!  
Also try our delicious steaks, chops, pizzas and Home Cooked Lunches

Eastgate . . . Next to All Star Lanes

**"SWEET-TOOTH" SPECIAL**

**HICKORY FARMS**

Eastgate Shopping Center

**IMPORTED CANDY**

Buy a Pound—Reg. Price 98c Lb.  
**GET SECOND POUND FREE** with this advertisement

Many, Many Kinds From Many, Many Lands  
Each Piece Individually Wrapped  
Toffees — Soft Centers — Fruit Flavors, Etc.

**OPEN** 9:30 a.m.-9:00 p.m., Mon.-Fri.  
9:30 a.m.-6 p.m., Sat.  
1:00 p.m.-6:00 p.m., Sun.

**JUNIORS AND SENIORS**

**Majoring in**

- BIOLOGY
- OTHER BIOLOGICAL SCIENCES
- CHEMISTRY
- PHYSICAL EDUCATION

Would you like information on an interesting selective pharmaceutical sales career?

Salaried position with excellent opportunity for advancement. Overnight traveling rarely necessary.

An Upjohn Company representative will be on campus FRIDAY, MARCH 19 to discuss employment possibilities in PHARMACEUTICAL SALES. Please arrange for an interview with your Placement Service.

**Varsity**

**STARTS TODAY**

The brave are never different—only different looking!



**"NONE BUT THE BRAVE"**

**FRANK SINATRA**  
**CLINT WALKER**  
**TOMMY SANDS**

Co-Starring BRAD DEXTER • TONY BILL SAMMY JACKSON with TATSUYA MIHASHI TAKESHI KATO Executive Producer HOWARD W. KOCH Produced and Directed by FRANK SINATRA Screenplay by JOHN TWIST and KATSUYA SUSAKI A SPRINTA ENTERPRISES & ARTISTS Production TECHNICAL COLOR PANAVISION FROM WARNER BROS.

**GUARANTEED TO PLEASE YOU! "SUPER-RIGHT" QUALITY HEAVY CORN-FED BEEF SALE—SAVE CASH THIS WEEK**

**ROAST**

Chuck Blade

Boneless CHUCK ROAST Lb. 53c

**LB. 37c**

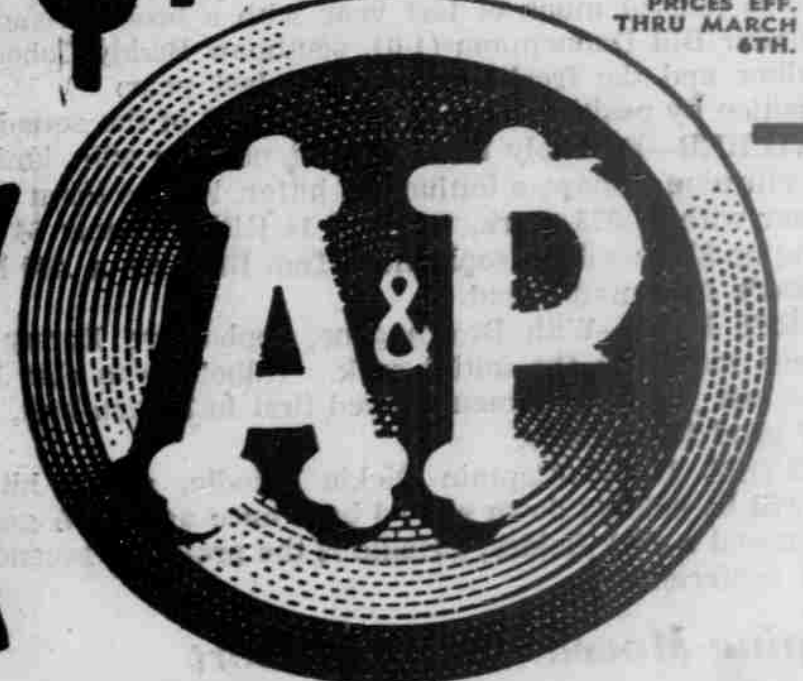
"SUPER-RIGHT" HEAVY CORN-FED BEEF

**STEAK**

BONELESS BOTTOM ROUND

TOP ROUND OR CUBED Lb. 73c

**LB. 69c**



SIRLOIN STEAK Lb. 85c  
T-BONE STEAK Lb. 89c  
PORTERHOUSE STEAK Lb. 89c  
BONELESS RIB STEAK Lb. 89c

**BEEF SALE**

"SUPER-RIGHT" HEAVY CORN-FED BONELESS STEW BEEF Lb. 49c

"SUPER-RIGHT" QUALITY FRESHLY GROUND BEEF Lb. 37c

"SUPER-RIGHT" HEAVY CORN-FED FREEZER BEEF

330 TO 390 LB. AVG. BEEF SIDE	39c	160 TO 190 LB. AVG. HINDQUARTER	47c
85 TO 110 LB. AVG. BEEF ROUND	49c	85 TO 110 LB. AVG. ARM CHUCK	35c
25 TO 35 LB. AVG. SHORT LOIN	69c	20 TO 30 LB. AVG. SIRLOIN BUTT	63c
25 TO 30 LB. AVG. 10" BEEF RIB	53c	45 TO 65 LB. AVG. FULL LOIN	63c

"SUPER-RIGHT" HEAVY BEEF 170 to 200 LB.  
**Beef Forequarter Lb. 33c**

LARGE 20-GALLON GALVANIZED GARBAGE CANS

**\$1.89** EACH

WITH LID