

Campus Chest Will Donate To O'Berry

One of the five charities to be aided by Campus Chest contributions is the O'Berry Center at Goldsboro.

The O'Berry Center is a state supported institution designed to provide Negro children throughout the state maximum mental, social, spiritual, physical and vocational growth.

Children sent to the O'Berry School are placed in one of three schools when they arrive. If a child is placed in the Academic School, he learns to read and write, work arithmetic problems, and to draw and sing.

If a child is not able to be placed in the Academic School, he is put in the School of Basic Training where he is taught to the extent of his capacity to take care of himself.

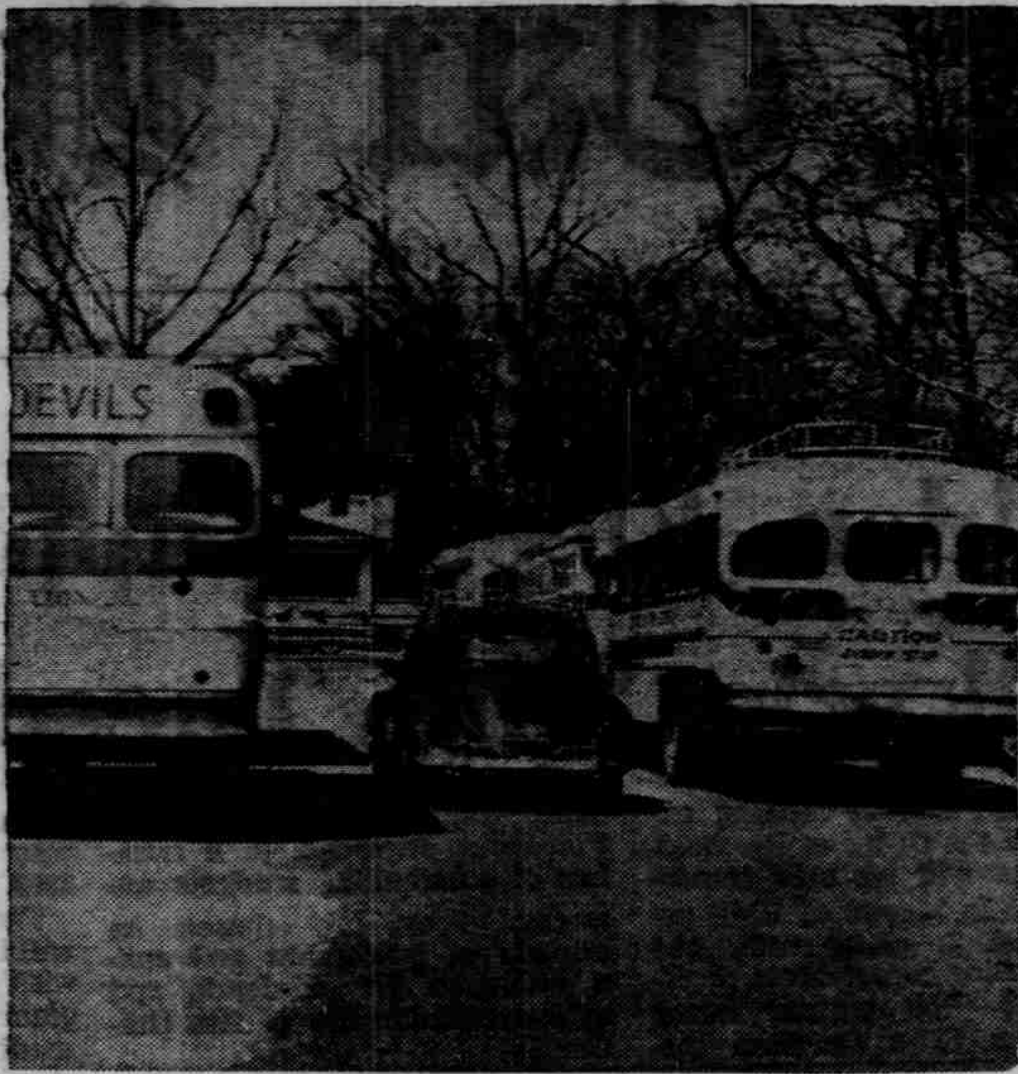
The children who successfully complete the academic program are placed in a vocational program. It is hoped that this program will provide an opportunity to develop the skill and experience that will help them find a place in community living.

The donation from the Campus Chest drive is dispersed in many directions. Since the budget covers only the essentials, this money goes for little extras.

Part of last year's money went to the County Fair for rides and cotton candy, some went to buy refreshments for parties on the custodial wing and some went for games and recreational equipment.

A small portion of the money was spent on cosmetics for the girls and scout uniforms for the boys.

The Campus Chest solicitations drive begins Wednesday.



A SMALL CAR zips through the maze of buses that parked yesterday in the Morehead lot bringing hundreds of children to the Planetarium for a look at the new Easter show. — Photo By Jock Lauterer.

The Buses Came

Buses packed Morehead Planetarium parking lot yesterday. Drivers sat on the stone walls and smoked, waiting for their human cargos to leave the Planetarium.

The busloads were here for the "Easter The Awakening" show just begun by the planetarium. The show includes a panoramic view of modern Jerusalem.

The panorama, a surprise addition to this year's program, was composed from photographs taken last summer in Jerusalem. Roy K. Patterson, a Planetarium staff narrator, climbed to the top of the Antonia, a fort-

ress built by Herod the Great and one of the highest points in the city, to take the sequential photographs that make up the 360-degree view. Most of the points mentioned in the biblical narratives of the first Easter are visible in the color panorama.

The basic script for "Easter the Awakening" was re-written in 1962, but it has received major revisions each subsequent year. "The new panorama of Jerusalem is worth a trip to Chapel Hill, even if you have seen the spring program before," commented Planetarium Director A. F. Jenzano. "It appears twice in the program; once when the narrator points out and describes the buildings and sites of historical interest, and again to open the program pageant, when it is cross-faded with the panorama of Jerusalem as it may have appeared 2000 years ago."

Feature Writers Meet Here April 10

Jack Wilson of Look Magazine and Bill Woestendiek, of the Houston Post, will be headline speakers at the N. C. News and Feature Writers Conference to be held here April 10.

Wilson is Washington correspondent for Look and other Cowles publications. Woestendiek is former editorial director of Newsday, Long Island, and a Winston-Salem newsman

in the 1950's.

Bob Quincy and Pete Ivey, co-chairmen of arrangements for the meeting of working newspapermen and broadcasters, announced a full day of intensive lectures and discussions on modern trends and techniques in writing for mass news media.

Julian Scheer, Director of Public Affairs for NASA in Washington, is in charge of the program for visiting national speakers. Scheer is a past chairman of the News and Feature Writers.

Professor Walter Spearman of the School of Journalism will speak on "1965 Wrinkles in News-Feature Stories."

All sessions of the conference will be held in Peabody.

The one exception will be the dinner meeting to be held in the ballroom of the Inn. Registration begins at 9 a.m. April 10.

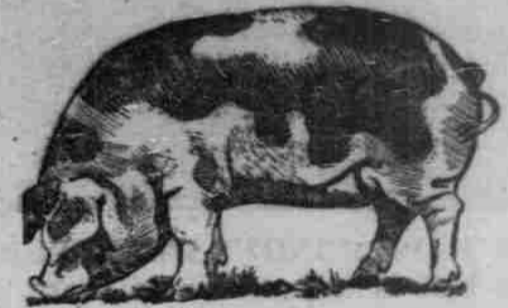
The conference is co-sponsored by the School of Journalism, Extension Division, News Bureau and the N. C. Conference of News and Feature Writers.

Piano Concert Tonight In GM

Pianist Barbara Rowan will give a concert at 8 tonight in Graham Memorial Lounge. The public is invited.

Mrs. Rowan was a pupil of the late Egon Petri and, more recently, has studied the piano under Alexander Libermann. She has studied composition with Darius Milhaud both at Mills College and in France.

WE HOPE YOUR DATE WAS A LITTLE BETTER THAN THIS FOR GERMANS— IF SO TO SHOW YOUR THANKS SEND A



CONTEMPORARY CARD



HOLIDAY IN EUROPE

FRANCE, AUSTRIA, SWITZERLAND, ITALY, CZECHOSLOVAKIA, DENMARK, GREECE, HOLLAND, YUGOSLAVIA, ENGLAND, GERMANY—East & West Berlin

SEMINARS ABROAD

TWA Jet — Hotel — Meals — Air Transportation Only \$1300 — Limited Application — YMCA Office

Crowell Little Motor Co.

Authorized Ford Dealer

- T-BIRDS
- MUSTANGS
- FALCONS
- FORDS

Complete Auto Service

Factory Trained Service Personnel

—Work Guaranteed—

Durham Rd.

Next to Eastgate

PINE ROOM

OPEN

Sundays 4:00-12:00

Mon.-Fri. 7:00-12:00

CLOSED SATURDAYS

Sunday, and Monday Night Special

Thick Slice

Boneless Choice Round of Beef

Baked Potato with Sour Cream Dressing

Tossed Green Salad

Rolls and Butter

\$1.25

SPECIAL

ANOTHER

PINE ROOM