

Buses Begin September 19

By TOM GOODING
DTH Staff Writer

Bus service from South Campus to the Wilson Library will begin on September 19.

Because of the isolation of the South Campus living area from the class room facilities and the downtown area, and to relieve the increasing traffic problem, a bus service was instituted between these areas last year by Student Government.

For the last two weeks of the preceding spring semester an experimental bus system was tried. With only minor exceptions it proved to be a success and will be continued. Arrangements for the buses was made by the Student Transportation Commission of the Student Government with the Raleigh Coach Line for two intra-city buses.

Two buses will run between the hours of 7:20 a.m. and 3:00 p.m. After 3:00 one bus will make the run till 5:30 p.m.

The number of trips between South Campus and

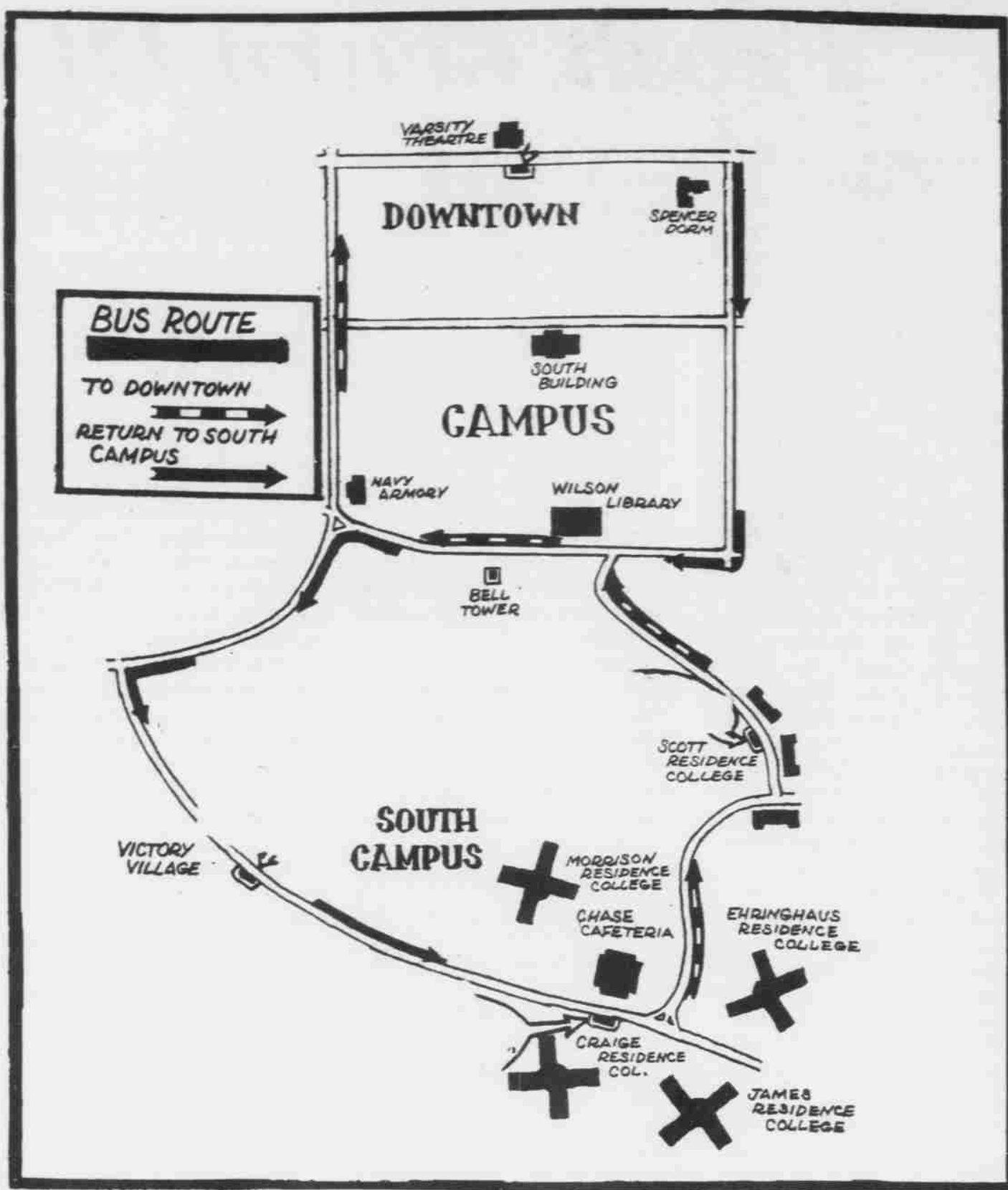
the downtown area will be increased. John McMurray of Student Government said, "The Chapel Hill businessmen were very helpful last year and contributed financial assistance to the program by purchasing ads."

Besides stops at South Campus, the Wilson Library and downtown, students will be able to flag the buses down at Victory or Odum villages and at Scott Residence College.

John McMurray said there was only one major complaint about the bus service last year, "Because of the seven minute schedule between Chase Cafeteria and the library there was a backlog created and the buses were forced to wait at their stops for several minutes."

"It was so easy for the buses to meet the schedule there was too much dead time. This year we may not have an exact schedule we may just have a continuous shuttle of buses between South Campus and the Wilson Library."

The fare for all rides will be 10 cents.



South Campus Bus System Route

... outgrowth of experiment last year

Di-Phi Senate To Debate 'Student Rebellion 1968'

By BLAND SIMPSON
DTH Staff Writer

The Di-Phi Senate, oldest and most open forum at the University, features "Student Rebellion 1968" as its first debate topic this year.

Although the Di-Phi is as old as the University itself, having been founded in the fall of 1795, its meetings follow a free-wheeling, no holds barred style of discussion, bounded only by a minimum of parliamentary guidelines.

All students, faculty members, and townspeople are invited to attend and participate in the debates; any student who has attended at least two meetings and made one speech is eligible for membership, as approved by the Senate.

"Student Rebellion 1968—Revolution or Reaction?" will be discussed first by guest speaker Lewis Lipsitz of the UNC Political Science Department. Other speakers will include student leaders from both student government and *The Daily Tar Heel*, as well as other interested students and faculty members.

The meeting is scheduled to convene at 7:30 p.m., Monday, September 23rd, in the Dialectic Senate Hall, third floor, New West.

Originally the "Debating Society," the students split

into two autonomous groups, the Dialectic Senate and the Philanthropic Assembly, within the first year of operation. They were re-united as the Di-Phi Senate in 1959.

Through the history of the University, the Societies of the Di and Phi have been at the vanguard of nearly every student initiated change. In the early part of the nineteenth century, student radical James K. Polk led the Di Senate in an anti-faculty censorship revolt that resulted in throwing out all faculty controls over the two student societies.

The Di and Phi also founded the student newspaper, endowed the library, pioneered the honor system and fought for a written constitution for student self-government here.

Having established itself over the years as a center for radical student thought, the Di-Phi has, in recent times, been harshly critical of student government for not working enough for student-oriented benefits. Last fall, the Di-Phi sponsored a petition which led to a complete re-evaluation of the Carolina honor and judicial system.

This year, with the issues of open visitation for women in men's dorms, self-limiting hours for coeds and more student participation in drug use cases already on the horizon, the Di-Phi is readying itself to serve as a truly open forum where the issues of both campus and nation may be aired.

World Olympics On Live TV

CAMDEN, N.J. (UPI) — Sports fans will be able to enjoy live television coverage of the Olympic Games in Mexico City thanks to a television switching complex designed for the Mexican government by RCA here.

The complex will handle as many as 40 incoming signals simultaneously and distribute them on 12 separate channels that will be beamed to the United States (by ABC-TV), European Broadcasting Union and Japan Broadcasting Corp. The complex will supply television sequences from many originating points, permitting the individual networks to select the particular picture and broadcast they wish to show on the home television screens.

Bennett & Blocksidge, Inc.

105 E. FRANKLIN ST.

Gulf Fuel Oil

Lamps

&

Small Appliances

WELCOME BACK!

Andrews-Fenninger COMPANY INC.

ALL 100% GUARANTEED

NAKED?

SEE US & DRESS UP AT

THE SUIT OUTLET—Durham-C.H. Blvd.

DIRECT FACTORY PRICES — SAVE UP TO 50%

WELCOME FRESHMEN

CAROLINA BARBER SHOP

SERVING CHAPEL HILL

SINCE 1918

6 BARBERS

CHASE CAFETERIA

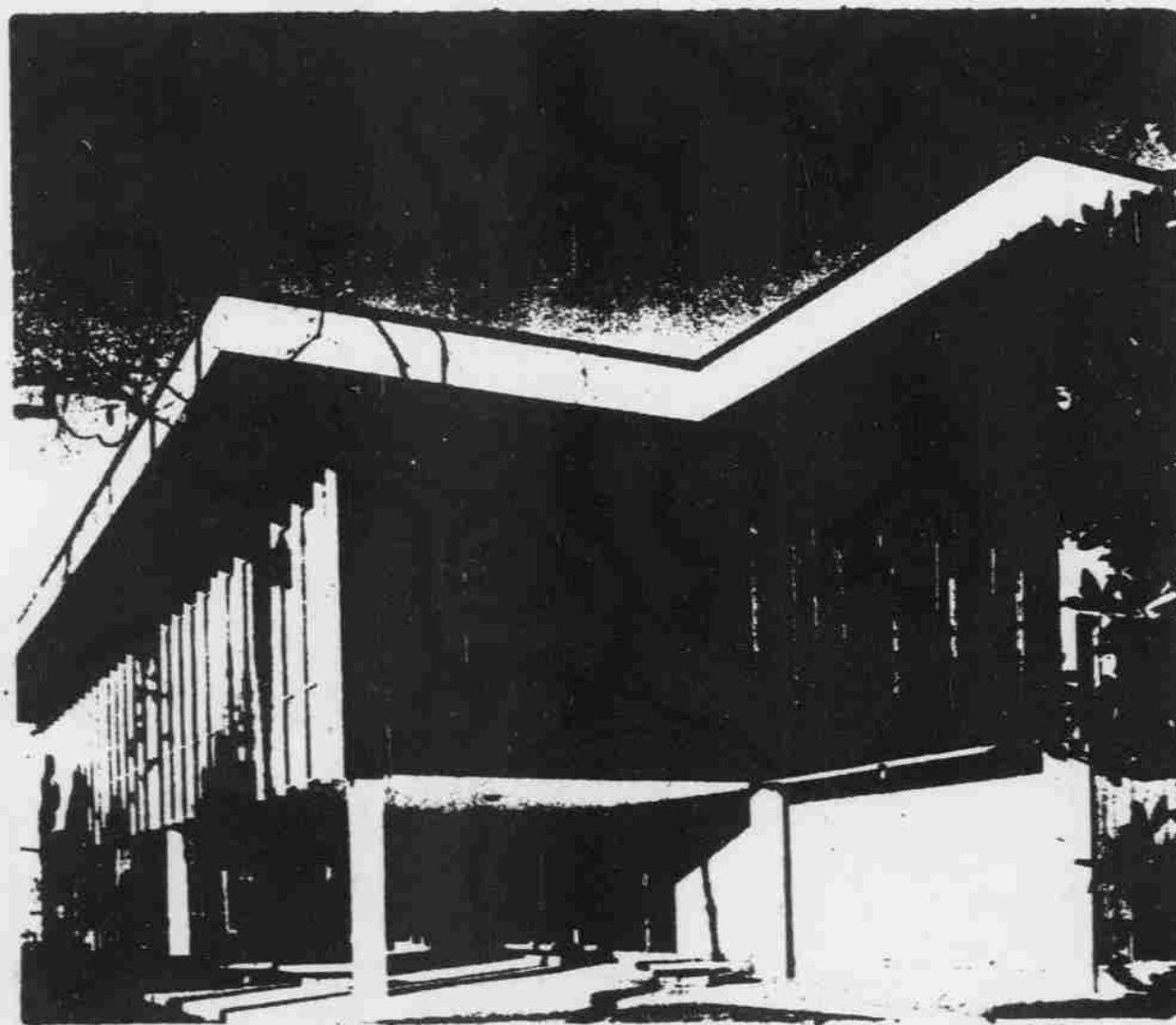
Welcomes YOU To Carolina

SERVING HOURS: DAILY

Breakfast	7-9
Lunch	11-1:30
Dinner	5-7

SUNDAY

Breakfast	8:30-10:30
Lunch	11:30-1:30
Dinner	5-7



Featuring the All Time Favorite

Student Special

- Meat
- Your Choice of Two Vegetables
- Hot Rolls
- Coffee or Tea

70¢

Speedy Service

SOMETHING NEW
Self-Service Cafeteria
Self-Service Snack Bar

A Bright, New, Colorful Dining Facility — Scramble Type Cafeteria — NO WAITING

- Gourmet Banquets
- Private Dinners
- Luncheons

Catering Facilities

- Buffets
- Picnics
- Private Meeting Rooms