

### THE RED CARPET

Presents

## The ALL YOU CAN EAT SPECIALS

(Monday through Thursday)

Starting Mon. Nov. 4 with MEAT LOAF

5:30 - 7:30

## Newman Dedication Today

Dedication of the newly constructed Newman Foundation is scheduled for Wednesday, Oct. 30, according to Catholic Chaplain Rev. John Huston.

Dedication ceremonies will begin at 7:30 p.m. with a blessing by Bishop Vincent S. Waters followed by a concelebrated Mass at 8 p.m. A reception will follow the Mass.

Former UNC Newman Chaplain Rev. Robert Wilkin, pastor of St. Lawrence Church in Asheville, will deliver the homily at the dedication ceremonies. The \$150,000 building, designed by John Latimer Associates of Durham, is located at 218 Pittsboro St., adjacent to the Wesley Foundation. The building features a permanent chapel seating 85 for week-day worship. It can be expanded on Sunday to accommodate 275 worshippers.

In addition to the chapel, there is a large multi-purpose room which can be used for such activities as meetings, dinners and movies. The room can also be divided into three small seminar areas.

On the north side of the building are two private consultation rooms and a reception desk. The Newman Foundation will also serve as the chaplain's residence.

In the rear of the facility there are parking spaces for 30 cars.

**Old Maps**  
Excellent for Decoupage  
Priced from 25c to \$1.00  
**The Print Room**  
in THE INTIMATE BOOKSHOP  
Chapel Hill



**GREAT PUMPKIN CONTEST**—The YW-YMCA pumpkin carving contest will be held Thursday. All interested should carve today and bring their creations to Y Court for judging tomorrow.

## Chansky's Choices

(Continued from page 4)

The case was settled out of court, with Bryant collecting \$300,000 in damages, but The Post is still appealing the Butts decision, placing an air of speculation on the entire matter.

This seems to be a home team game, and the fact the Houston is not in the Astrodome where they lost only to N.C. State last year may hurt.

The Bulldog problem will be to contain the Cougars. If they can do that, they'll probably bite Houston's head off. The Cougars will try to run fast and scratch hard, but it's doubtful whether Georgia's skin-tight defense can be penetrated.

Georgia is playing right outside its own doghouse, and mainly for this reason, it's a Bulldog in a real cat and dog fight.

## Refugees Need Rides

Members of the Refugees of Resurrection City, U.S.A., for Human Rights are in need of transportation to Atlanta, according to Lawrence Whitfield, a UNC student working with the group.

Whitfield said Tuesday that the seventeen members of the organization now in Chapel Hill are seeking rides for themselves and their four dogs and one horse.

They plan to leave Chapel Hill Thursday, Friday, and Saturday in separate contingents, if transportation for all has been arranged, by that time.

The Refugees have been in Chapel Hill for the last two-and-a-half weeks soliciting funds and volunteer workers for their organization.

A support group has been established at UNC and another has been formed at Fordham University in New York.

The University of Alabama chapter of the Southern Student Organizing Committee (SSOC) is currently gathering building materials and tools so that the Refugees can begin building the new Resurrection City near Selma as soon as they arrive.

They are hoping to begin work soon in order to have the buildings finished before the cold winter months arrive.

Anyone who can provide transportation for members of the Resurrection City group is asked to contact Whitfield at 933-4121.

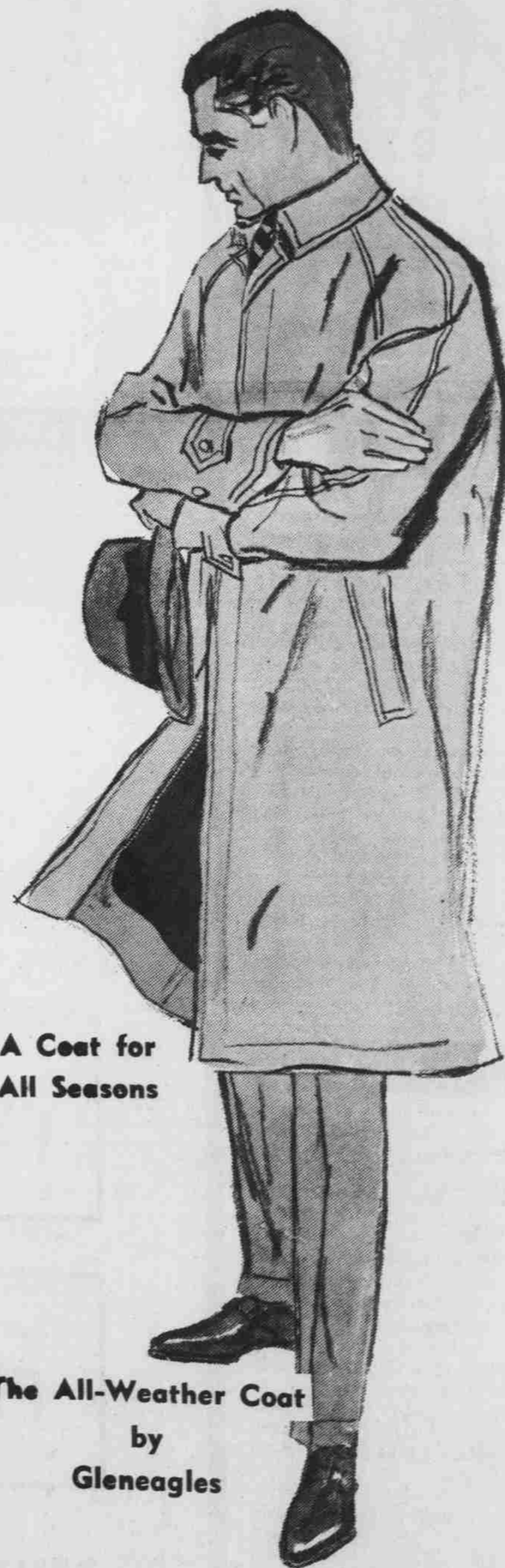


Sharyn Lynn presents the Body Shirt with French cuffs and long collar. Now in white, yellow, blue and bone. at only \$7.50 Sizes 7-15

Just received—shipment of Bermuda collar, short-sleeve shirts with covered buttons. White, navy, natural. Sizes 8-16. \$6.00

SHARYN LYNN SHOPPE

THE HUB NOW PRESENTS -



A Coat for All Seasons

The All-Weather Coat by Gleneagles

You'll be ready for any season—and any weather—in an all-weather coat from GLENEAGLES . . . this fine coat, handsomely tailored from 65% DACRON polyester and 35% cotton, is protected against rain and stain for your long-wearing pleasure . . . the great fly front, slash pockets, and slide collar all contribute to your feeling of fine fashion . . . and the zip-in lining is great for those cool mornings and evenings . . .

THE HUB of Chapel Hill

Clothing is our middle name and this is where Milton's really shines



This fall will give you an instant reason why so many sartorial devotees shop the Cupboard year after year after year. You don't see the same old selections but a whole new array of fashion ideas that make our Old School clothes so much fun to wear. Bountiful harvest of country suits galore!

The rugged India whipcord suit in British hacking model or patch/flap model, unvested \$100.00; vested \$110.00.

New rugged cheviot country plaids in green or brown hues; gray herringbones, broken herringbones in olive; red/white/blue sport coat plaid; brown/olive or brown tan pin-check — all vested \$110.00.

Window panes in brown or olive worsted chevies—vested — \$110.00.

Imported worsted navy twill—a great dressy suit—vested—\$110.00.

Navy or bottle green wool blazers—\$45.00.

Domestic shetland in gray herringbone or blue/tan plaid sport coat—\$50.00.

Imported blue plaids, gray or tan herringbone sport coats — \$65.00.

Imported shetland plaids in navy, gold, olive, blue and brown grounds—\$75.00.

Milton's got it this fall in the long, the short and the tall — y'all come!

Milton's Clothing Cupboard

**WANTED** — You were caught by the STUDENT STORE roving camera. Identify yourself and pick up your gift at the Student Store. Next week it may be YOU —



## Honey's Restaurant

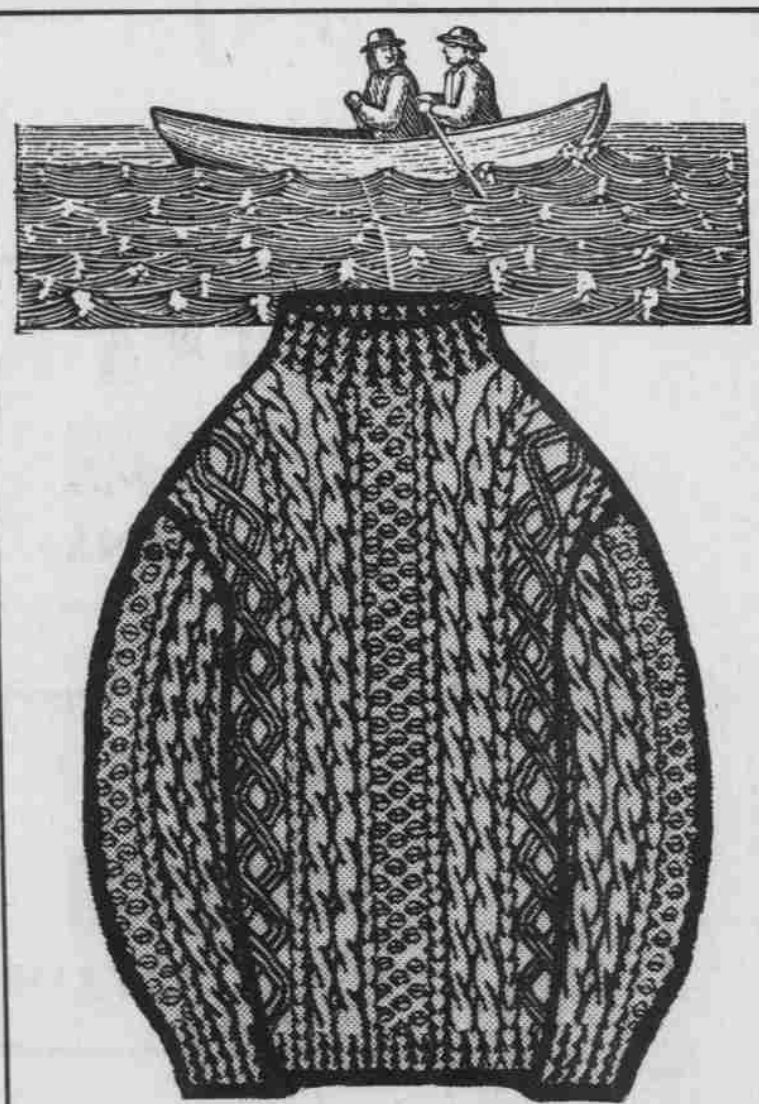
THE PLACE FOR NEW AND OLD STUDENTS

Featuring

- ★ Luxurious Dining Room
- ★ Instant Car Service
- ★ Take-Out Food at Its Best
- ★ 3 Varieties of Pancakes



OPEN 9 A.M. 'TIL MIDNIGHT



## GOT AN ANGLE?

If you haven't, we have . . . the fisherman's knit bulk sweater shown. Our angle is excellent wool. Worked in a fist-thick stitch, in the fall shades most appropriate to your wardrobe. Your angle should be its purchase, soon.

Town & Campus

## Milton's Shirts & Shoe Deals



477 pairs of shoes reduced for now wearing — Discontinued men's Bass Weejuns cut from \$19.00 to \$12.00.

Entire stock womens Weejuns cut from \$16.00 to now of \$12.00.

Group Johnston & Murphy, Nettleton and another famous brand shoes and tassels, regularly to \$45.00, would you believe \$20.00?

It's also SHIRT-ADDING TIME — 1458 shirts in long and half sleeves, all in finest single needle tailoring by one of America's best known traditional shirt houses, regularly to \$9.95, buy several at \$5.99.

Milton's really got it this year!

Milton's Clothing Cupboard

**NORFOLK** Leisure length jacket with front and back panel styling. Hidden slash jewelers suede pockets. Fully belted with tunnelled loops and matching buckle. Designed with a removable liner of colorful wool or plush pile with satin over-yoke. Available: special tannage suede, cabretta and antique leather.



Julian's