

**NEW!**

**Mailgram**  
Western Union

DEAR HP DEALER,  
TODAY HEWLETT-PACKARD ANNOUNCES THE HP-25, A NEW MEMBER OF OUR SCIENTIFIC CALCULATOR LINE. THIS PRODUCT CONTAINS MANY OF THE MOST BENEFICIAL HP FEATURES, INCLUDING: KEYSTROKE PROGRAMMING WITH COMPLETE EDITING, 8 ADDRESSABLE MEMORY REGISTERS, AND THE MOST-USED ADVANCED SCIENTIFIC, ENGINEERING, AND MATHEMATICAL FUNCTIONS. AT ONLY \$195. THE HP-25 SHOULD BE AN EXCITING ADDITION TO YOUR CALCULATOR DEPARTMENT.  
IN ADDITION, HP IS REDUCING THE PRICE ON THE HP-70 TO \$165.

now at  
**STUDENT STORES**

## New low prices on Hewlett-Packard business and financial pocket calculators.

### HP-70 Business Pocket Calculator—now \$165

WAS \$275.

Solves more than 100 time-value-of-money calculations—easily and quickly. Use it for every-day accounting problems like discounts, mark ups, extensions and percents. And for more complex problems like return-on-investment, cash flow analysis, effective rate-of-return, loans, mortgages. Price includes 91-page book on business applications.



## We've got it!

The great new Hewlett-Packard HP-21 Scientific Pocket Calculator. Uncompromising quality at only \$125.

Now you can own a Hewlett-Packard scientific pocket calculator at a popular price—with traditional HP performance and quality. The remarkable new HP-21 gives you all these features:

- A true scientific calculator with 32 pre-programmed functions and operations, including rectangular/polar coordinate conversion, register arithmetic, common log evaluation and two trig operating modes.
- Full display formatting. You can choose between fixed-decimal or scientific notation with display rounded to desired number of decimal places.
- HP's error-saving RPN logic system with 4-memory stack. You solve all problems your way—without copying parentheses, worrying about hierarchies or re-structuring beforehand.
- HP quality craftsmanship. One reason Nobel Laureates, astronauts, conquerors of Everest and over 750,000 other professionals own and depend on HP calculators.
- Smaller size. Weighs only six ounces.

See the new HP-21 scientific pocket calculator today. Challenge it with your problems right in our store. You'll be amazed at the high performance you can take home for only \$125.



**STUDENT STORES**

## Wilson wears dunce cap

by Dan Fesperman  
Staff Writer

In 1930 John Motley Morehead inadvertently put a dunce cap on the Louis Round Wilson Library. Some people will even tell you that he did it on purpose.

Morehead, along with Rufus Lenoir Patterson, gave UNC \$100,000 to construct the Morehead-Patterson Bell Tower. Seen from the front steps of South Building, the tower's conical top seemingly fits on the library's dome like a dunce cap on a bald head.

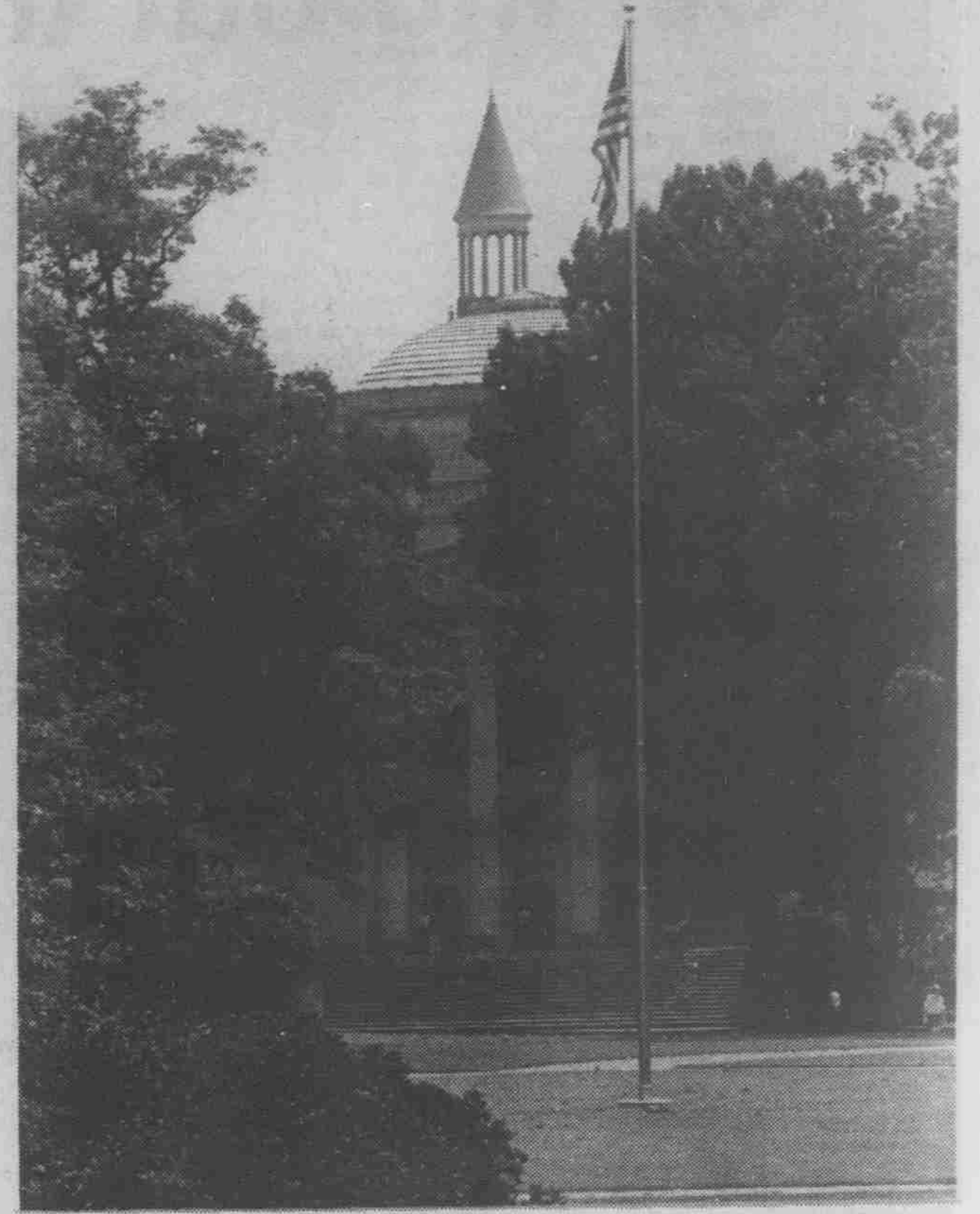
According to a 45 year old campus legend, Morehead was angered because the library, built the year before, was named for Wilson instead of himself. Supposedly in reprisal, Morehead then had the Bell Tower constructed in its strategic location.

But Louis Round Wilson, who is the oldest living alumnus of UNC and resides in Chapel Hill, said, "Certainly there was no idea of putting a fool's cap on top of the library. That idea was in some students' heads—probably the same ones that called Swain Hall 'Swine Hall.'"

Wilson said that several other sites for construction of the Bell Tower were reviewed before the existing one was approved.

"The first one was on top of Old East," he said. "But they had to repair it because it was about to fall apart, so they decided not to build it there."

The second suggested site was the top of South Building. This would



The Morehead Bell Tower, built one year after Wilson library, sits like a fool's cap on the library's dome.

have created "the dunce cap effect" for people on the south side of the library. Strangely enough, this location was proposed by Morehead.

Morehead also wanted South Building to be renamed "The Morehead Building." "The trustees and alumni smoked that idea," Wilson said. "They didn't want to change the name because it had traditionally been called South Building and 'Old Main.'"

Morehead then proposed that the tower be built on the top of Wilson Library. "I opposed that," Wilson

said. The existing site was the next one that was suggested. "The trustees told Morehead," Wilson said, "that the spot would someday be in the middle of the campus buildings since they were planning to build on the south part of the campus. Morehead thought it sounded like a good idea, so they built it there."

When Wilson was asked if there was even a speck of truth in the Bell Tower legend, he said, "It wasn't designed for that purpose at all."

He then added, "But it does look that way—like a fool's cap."

**Stereo Sound Announces:**

## A New Fall Course in Systems Analysis



**OHM E Speakers**

Retail Price 90<sup>00</sup> each

**Pioneer SX434 Receiver**

Retail Price \$250<sup>00</sup>



PE 3044 with walnut base, dust cover, and Audio Technica AT11E Cartridge

Retail price 192.85

**SYSTEM PRICE**

**\$469<sup>00</sup>**

Total Retail Value—\$622.85

FALL COURSE DESCRIPTION: Stereo Sound Systems Analysis

COURSE OFFERS:  
 ●Over fifty major brands of hi-fidelity components—the most extensive selection in the area.  
 ●Extensive consumer protection policy.  
 ●A low-price guarantee.  
 ●Innumerable credit hours of listening pleasure.

INSTRUCTORS:  
 All Ph.D.'s (Professionals in Hi-Fi Demonstration)  
 ●Ann Shachtman of Chapel Hill  
 ●Steve Gronback from Harvard Square  
 ●Tom Gooding from UNC.  
 ●Mike Stephenson from UNC.

COURSE PRE-REQUISITES:  
 Interest in great sound at the right price.

For further information call the instructors at 942-8546

or Stop in and get the complete syllabus!!!

**Stereo Sound**

HOURS:  
 Mon., Thurs., Fri. 10-9  
 Tues., Wed., Sat. 10-6  
 Upstairs  
 Next to downtown Post Office

175 E. Franklin St.  
 942-8546