

weekday fare

cinema

A Hard Day's Night — The first offering in the Union's Beatles Festival, this film has something to do with TV, policemen, Her Majesty's Government and songs. At 7 and 9:30 p.m. Tuesday in Carroll Hall auditorium. Free with student I.D.

Help! — The second Beatles film, this one revolves around a sacrificial ring, the Alps, the Bahamas and songs. At 7 and 9:30 p.m. Wednesday, in Carroll Hall. Free with student I.D.

Let It Be — This is the third Beatles movie. It concerns hair, policemen, Yoko Ono, the '60s and an audition. It also features songs. At 7 and 9:30 Thursday night in Carroll. Free with I.D.

television

Monday

Hostage! — This ABC News Closeup reviews four major incidents in the '70s in which a major goal was the capture not only of people but also of the world press. At 10 p.m. on Channels 5 and 8.

women

Continued from page 1.

argument against women in higher education was that their brains couldn't take it," Scott said. In fact, she said, one medical doctor wrote his thesis on how women's reproductive systems would be destroyed if they were academically oriented.

Another problem with studying Southern women is they often have been ignored in the study of history, Scott said. She said it was really only within the last 20 years that the field of social history developed, resulting in an interest in "social structures, in families, in communities, associations and organizations."

This new historical field, Scott said, "changes your entire cast of characters. You find out, after all, that there are two sexes."

Though the study of women's history has advanced with the evolution of social history, there are still many fields needing study, the speakers said. "The title of this panel is a bit premature, I believe," Janiewski said. "It is hard to talk about perspectives when you have yet to make most of the women even visible."

There are many kinds of women needing research done about them in history, Fredrickson said, from working women to plantation mistresses.

Tuesday

Live From Lincoln Center — The New York City Ballet performs *Coppelia*, with music by Delibes and choreography by George Balanchine and Alexandra Danilova. At 8 p.m. on Channel 4.

College Basketball — The Clemson Tigers face the N.C. State Wolfpack in an ACC game at Raleigh. At 9 p.m. on Channels 2 and 5.

NBC: The First 50 Years... A Closer Look — Orson Welles, Peter Falk, James Stewart and Alfred Hitchcock host this second sequel to NBC's 1976 golden anniversary celebration. At 9 p.m. on Channel 28.

Chinatown — A rerun of the intricately plotted crime drama set in the 1930's. With Faye Dunaway and Jack Nicholson. At 9 p.m. on Channel 11.

Wednesday

Liberace — In Las Vegas, Liberace welcomes Debbie Reynolds, puppeteer Barclay Shaw and even Phyllis Diller in a cameo. At 8 p.m. on Channels 2 and 11.

See How She Runs — Joanne Woodward portrays a 40-year-old faced with middle-age blues. Gradually increasing her daily jogging routine, she builds up enough endurance for the Boston Marathon. At 9 p.m. on Channels 2 and 11.

Great Performances — Eugene Ormandy leads the Philadelphia Orchestra in Gustav Holst's *The Planets*, with the Mendelssohn Club of Philadelphia performing the choral segments. At 9 p.m. on Channel 4.

Thursday

College Basketball — The Duke Blue Devils play the Wake Forest Demon Deacons at Winston-Salem. At 8 p.m. on Channels 2 and 5.

Will Rogers' U.S.A. — James Whitmore portrays the American humorist in this performance taped at Ford's Theatre. At 9 p.m. on Channel 28.

Hall of Fame — *Taxi!* by Lanford Wilson, concerns a garrulous New York cabbie and a middle-aged jet setter he is driving to Kennedy Airport. With Martin Sheen and Eva-Marie Saint. At 10 p.m. on Channel 28.

music

North Carolina Symphony — The ensemble performs works by Schumann, Dello Jorio and others at 8 p.m. Wednesday at Hillsborough's Orange High School. UNC students admitted free. Daniel Blumethal, pianist, will be the guest soloist. Call 967-9251, ext. 339 for directions to the school or for additional information.

Albee, Donlon featured in American theatre workshop

Aspects of the American Theatre — the resolution of its commercial and technical nature with the creative response to human expression — is the subject of a February workshop which brings two internationally recognized artists to the Carolina campus.

On Friday and Saturday nights, Feb. 3 and 4, Pulitzer Prize-winning playwright Edward Albee and mime James Donlon will present, in public address and performance, the artist and his medium. Their appearances will highlight the Carolina Union Theatre Workshop, February 3 through 5.

The workshop, holding approximately twenty professional and amateur theatre sessions and coordinated by Lili Shiffman (formerly of *Jacques Brel Is Alive and Well...*), marks an innovative programming experiment for devotees of our most expressive art form.

Albee, considered to be America's foremost living dramatist, will open the workshop with his Friday evening lecture, "The Playwright vs. the Theatre." Albee is a leading advocate of contemporary popular theatre, believing performances should be made available to a more representative portion of the public. It is college and regional theater that he sees as being our most vigorous, most productive and most capable of significant development.

The writer himself is best known for his plays which deal with the intricacies and cruelties of the relationships between people, the "barbed talk and polished inter-action, the prime disease of our time and our society, which is neither violence nor materialism nor alienation, but quite simply emptiness." These words described "A Delicate Balance," Albee's first Pulitzer Prize Winner, and were given by leading drama critic Max Lerner. Albee followed this success with still another, "Seascape" (another Pulitzer recipient), which was characterized by Brendan Gill in *The New Yorker* as "the most exquisitely written of all

his plays."

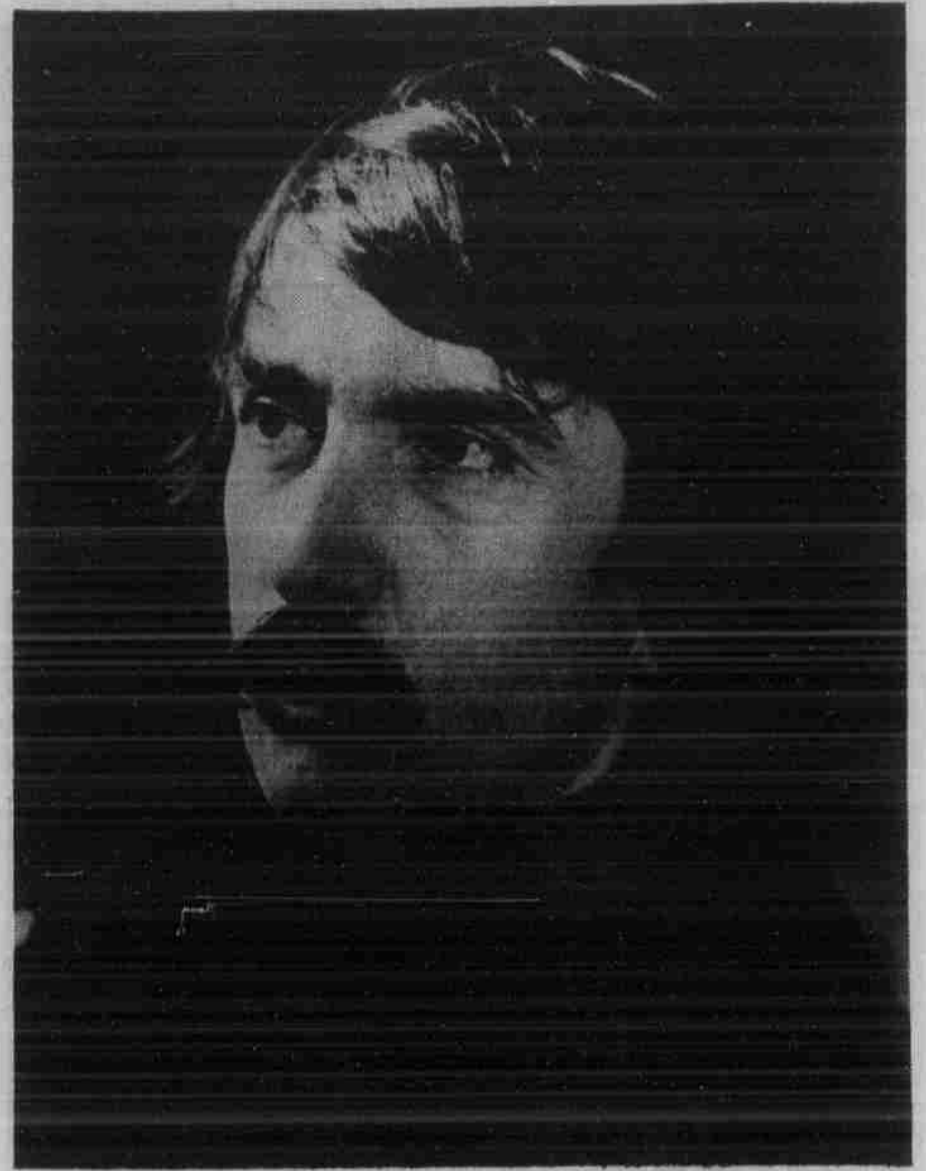
Albee began his professional career when he was 30 when he produced *The Zoo Story*, followed by *The Sandbox* and *The American Dream*. In 1962, one of the most frequently performed plays of contemporary theatre and perhaps Albee's best known work, *Who's Afraid of Virginia Woolf?* was produced. *Virginia Woolf* brought Albee almost instant international acclaim as Richard Watts called it "the most shattering drama since... Eugene O'Neill's *Long Journey into Night*."

Albee will be involved throughout the workshop with two sessions, a Creative Writing segment and an Acting and Directing segment in which he will direct students from UNC in scenes from his plays.

Additional information on the workshop and speech may be found in Theatre Workshop brochures available in the Union. James Donlon, internationally recognized mime master and "find" of impresario Teatro Dimitri, likens his medium to "painting, sculpture and poetry. Painting for the understanding of line and color the performer must have to draw an image on stage; sculpture, because the mime sculpts space for the audience, takes an abstract idea and puts it into concrete, visual terms; and poetry, for the expression of essences of the basic human emotions and needs."

Formerly a teacher of the clowns with Ringling Bros., Barnum and Bailey Circus, Donlon has been a guest lecturer and instructor at more than 100 universities and colleges nationwide. He was also the founder and director of a professional mime school in San Francisco for two years.

James Donlon, a master of imitating and expanding life, will be featured in performance Saturday night, Feb. 4, in Memorial Hall. Additional information on his mime workshop, open to students, is available from the Union desk.



Edward Albee, one of America's foremost living dramatists, will open the Carolina Union's workshop on "Aspects of the American Theatre" when he speaks Friday night. Albee's lecture is entitled "The Playwright vs. the Theatre."

1978 PERSONAL AND REAL PROPERTY TAX LISTING

January is the month in North Carolina in which all personal and real property is to be listed for county property tax. All motor vehicles, household items, etc., as well as real estate owned is to be listed in the county in which it is situated as of 1/1/78, according to NC Statutes 105-301 and 105-304.

The Orange County personal and real property tax forms will be mailed to all residents who made a tax listing in 1977 as a convenience for listing by mail. New residents and those who wish to list in person can go to their individual township list-taker whose schedule is posted below, or to the Orange County Courthouse in Hillsborough.

All listings must be completed by January 31, 1978.

To avoid long lines, list by mail on forms from our office. They may be obtained by calling the Tax Supervisor's Office in Hillsborough at 732-8181 or 967-9251.

The homestead exemption law has been changed for 1978 to give up to \$7500 in real and household personal property value off of the total value if the income of the owner of this property did not exceed \$9000 for 1977. To qualify for this exemption the owner must complete the section on the back of the tax listing form which applies to this, and be 65 years of age or permanently and totally disabled to work.

W. T. Laws
Orange County Tax Supervisor
CHAPEL HILL TOWNSHIP
L. R. CHEEK, LISTER

The listing will take place at the Carrboro Town Hall each Monday through Friday, 9 a.m. to 5 p.m. and Saturdays, 9 a.m. until 12 Noon, beginning January 3, 1978 and continuing throughout the month of January.

PEACE CORPS

It offers professional development and challenge.

Requirements:

- must be a U.S. citizen
- although the minimum age is 18 years, very few applicants under 20 have the skills and experience necessary to qualify.
- must meet medical and legal criteria

Training:

- lasts from 4 to 14 weeks, usually in the host country
- emphasizes language and cultural studies

Compensation:

- monthly allowance for food, lodging, incidentals
- medical care
- readjustment allowance of \$125 per month, set aside in the U.S., usually payable at completion of service
- optional life insurance at minimum rate
- personal satisfaction and overseas career development

NEEDED: People with experience or degrees in:

- Agriculture/farming
- Business
- Education, especially math/science
- special education, industrial arts
- Engineering, especially Civil Engineering
- Nutrition, Home Ec (Degree required)
- Health Professions
- Skilled Trades
- Auto/Diesel Maintenance

INTERVIEWS:

Placement Office — February 7 and 8

7:00
9:00

CONVOY & BUDDIES PG

7:15
9:15

MASTER of the FLYING GUILLOTINE R

7:00
9:15

Is anything worth the terror of

THE DEEP PG

RAM TRIPLE
CHAPEL HILL, N.C.
MON-FRI 9:30-11:00
SAT 10:00-11:00
SUN 10:00-11:00
967-8384

SHOWS
3:30
5:15
7:00
9:00
ABC
CARDS
GOOD
TO
FEB. 2

THE WORLD'S GREATEST LOVER PG

Carolina Twin
EAST FRANKLIN STREET

3:45
6:30
9:20
NO
PASSES

CLOSE ENCOUNTERS OF THE THIRD KIND PG

A Columbia EMI Feature

CHAPEL HILL
Plaza 1
Held Over
6th Big Week

SHOWS
3:05
5:10
7:15
9:20

BURT REYNOLDS "SEMI-TOUGH" R

United Artists

CHAPEL HILL
Plaza 2
Held Over
2nd Big Week

SHOWS
2:45
5:00
7:15
9:30

SATURDAY NIGHT FEVER

JOHN TRAVOLTA
A PARAMOUNT PICTURE

CHAPEL HILL
Plaza 3
Held Over
6th Big Week

SHOWS
3:10
5:20
7:30
9:40

the GOODYEAR GIRL PG

RICHARD DREYFUSS
MARSHA MASON

CHAPEL HILL
Varsity
HELD OVER
2nd BIG WEEK

SHOWS
3:00
5:10
7:20
9:30

The Turning Point PG

ANNE BANCROFT SHIRLEY MACLAINE

Sorry
No
Passes

In the Boom Boom Room

a drama by David Rabe 8:00 p.m.

Feb. 16-19 Great Hall

Tickets on sale now at the Union Desk

Tickets now on sale for:

Jerry Jeff Walker
appearing in Memorial Hall at 8:00 p.m. on Feb. 6

AND

Arlo Guthrie
appearing Feb. 14, same time, same place.

Videotape

Loggins and Messina

Jan. 30 - Feb. 5

free

2 p.m. in the Music Gallery

Orpheus Chamber Orchestra

Feb. 5 8 p.m.

Memorial Hall

Tickets \$2.00, on sale now at the Union desk to UNC Students and Faculty. Staff privileged card holders.

DEEP Jonah

Rod Abernethy

Thurs. Feb. 2nd

9:00 p.m. free

BYO Beer and Wine

N.C. Society for Original Graphics

Display in the Union's South Gallery

Jan. 14-Feb. 18

carolina UNION

Union hours:
7:30 a.m.-11 p.m. Mon-Fri.
9:00 a.m.-11 p.m. Sat.
11:00 a.m.-11 p.m. Sun.

ADMIT ONE

FREE 3:45 FEB.

EDWARD ALBEE

MIME WITH

JAMES DONLON

vs.

MAGIC

MUSICAL THEATRE

"IN IN FILM"

James Donlon

Feb. 3

Mime at its Best

in conjunction with the Union's Theatre Workshop

8 p.m. Memorial Hall \$2.00

Applications are now available for the UNION PRESIDENCY. They may be picked up at the Union desk between Jan. 16 and 30.

February calendars available Monday, Jan. 30 at the Union, Y-Court, Pine Room, Chase Cafeteria, and Residence areas main desks.

KARL HESS

anarchist

Wednesday, Feb. 1

8 p.m. Memorial Hall Free

Edward Albee

The Playwright

vs.

The Theatre

in conjunction with the Union's Theatre Workshop

Sat. Feb. 4 \$1.00

8 p.m. Memorial Hall

Bill Evans Dance Co.

Tuesday, Feb. 21

8:00 p.m.

Memorial Hall

Tickets on sale now at the Union Desk.

Students: \$3.00 Gen. Public: \$4.00

Sex and Communication

AND

The Sensual Art of Massage

films and discussion

Tuesday, Feb. 7

106 Carroll Hall

8 p.m. free

Dr. John Reckless

speaking on

"Sexual Dysfunction"

Thursday, Feb. 9

106 Carroll Hall 8 p.m.